

CentralTM

Semiconductor Corp.

145 Adams Ave., Hauppauge, NY 11788 USA
 Phone (631) 435-1110 FAX (631) 435-1824
 Manufacturer of World Class Discrete Semiconductors
 www.centalsemi.com

2N5447
 2N5448

PNP SILICON TRANSISTOR

JEDEC TO-92-18R CASE

DESCRIPTION:

The CENTRAL SEMICONDUCTOR 2N5447 and 2N5448 types are Epitaxial Planar Epoxy Molded Silicon PNP Transistors designed for audio frequency and amplifier applications.

MAXIMUM RATINGS:

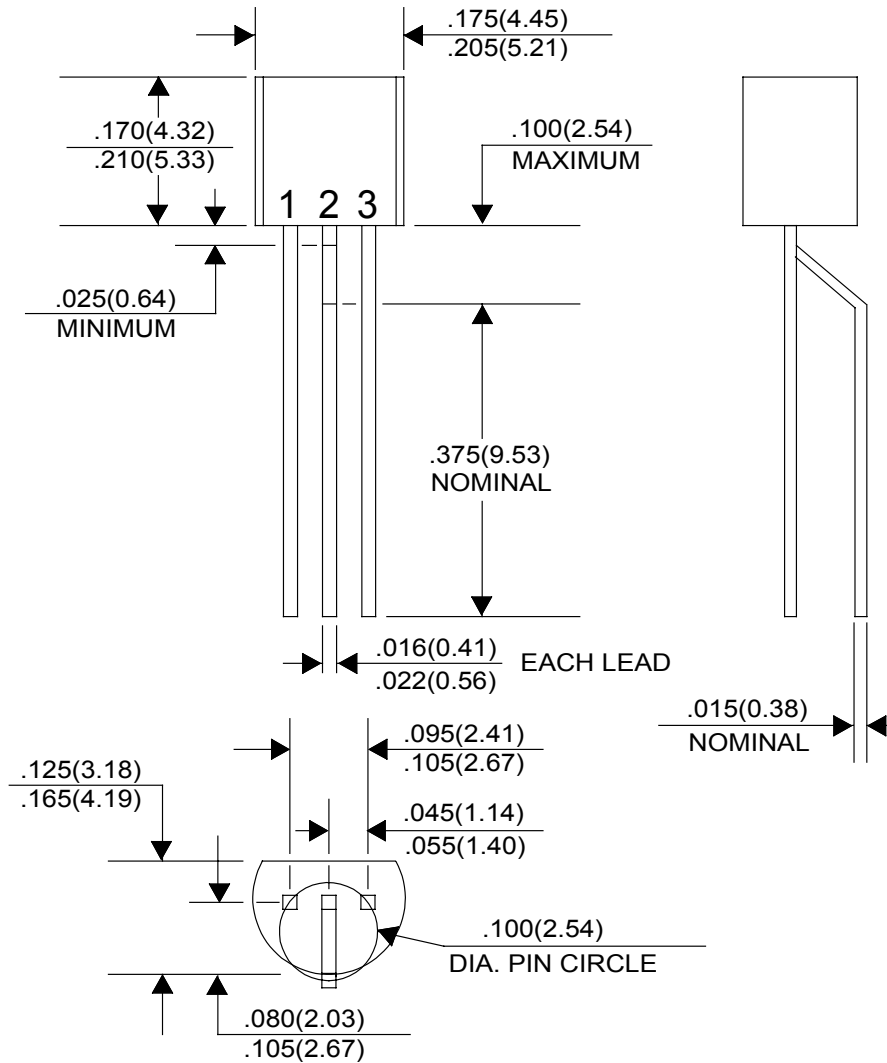
	SYMBOL	2N5447	2N5448	UNITS
Collector-Base Voltage	V_{CBO}	40	50	V
Collector-Emitter Voltage	V_{CEO}	25	30	V
Emitter-Base Voltage	V_{EBO}	5.0	5.0	V
Collector Current	I_C	200	200	mA
Power Dissipation	P_D	625	625	mW
Operating and Storage Junction Temperature	T_J, T_{stg}	-65 to +150		°C
Thermal Resistance	θ_{JA}	200		°C/W

ELECTRICAL CHARACTERISTICS:

SYMBOL	TEST CONDITIONS	2N5447		2N5448		UNITS
		MIN	MAX	MIN	MAX	
I_{CBO}	$V_{CB}=20V$		100		100	nA
I_{EBO}	$V_{EB}=3.0V$		100		100	nA
BV_{CBO}	$I_C=100\mu A$	40		50		V
BV_{CEO}	$I_C=10mA$	25		30		V
BV_{EBO}	$I_C=100\mu A$	5.0		5.0		V
$V_{CE(SAT)}$	$I_C=50mA, I_B=5.0mA$		0.25		0.25	V
$V_{BE(ON)}$	$V_{CE}=5.0V, I_C=50mA$	0.6	1.0	0.6	1.0	V
h_{FE}	$V_{CE}=5.0V, I_C=50mA$	60	300	30	150	
C_{cb}	$V_{CB}=10V, I_E=0, f=1.0MHz$		12		12	pF
f_T	$V_{CE}=5.0V, I_C=50mA, f=20MHz$	100		100		MHz

(SEE REVERSE SIDE)

JEDEC TO-92-18R CASE - MECHANICAL OUTLINE



All Dimensions in Inches (mm).

LEAD CODE:

- 1) COLLECTOR
- 2) BASE
- 3) EMITTER

Central™
Semiconductor Corp.

145 Adams Ave., Hauppauge, NY 11788 USA
 Phone (631) 435-1110 FAX (631) 435-1824

Manufacturers of World Class Discrete Semiconductors
www.centraisemi.com