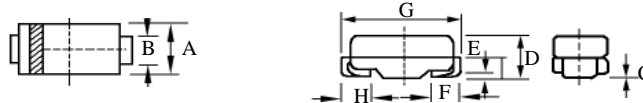


FFM101 – FFM107
1A 片式快速二极管
1A FAST RECOVERY SMA DIODES

型号 TYPE	印字 Marking	反向重复 峰值电压 $V_{RRM}(V)$	正 向 平均电流 $I_F(A)$	正 向 峰值电压 $V_F(V)$	反 向 峰值电流 $I_{RM}(\mu A)$	正 向 浪涌电流 $I_{FSM}(A)$	反 向 恢复时间 $T_{rr}(ns)$	外形尺寸 Package Dimensions
FFM101	FF1	50	1.0	1.3	5.0	30	150	DO – 214AC
FFM102	FF2	100						
FFM103	FF3	200						
FFM104	FF4	400						
FFM105	FF5	600						
FFM106	FF6	800	250					
FFM107	FF7	1000		500				

Trr 测试条件: $I_F=1A, I_R=0.5A, I_{RR}=0.25A$

Trr Test Conditions: $I_F=1A, I_R=0.5A, I_{RR}=0.25A$



A	B	C	D	E	F	G	H
$\frac{.110(2.8)}{.086(2.2)}$	$\frac{.067(1.7)}{.051(1.3)}$	$\frac{.008}{(.2)} \text{ MAX}$	$\frac{.091(2.3)}{.067(1.7)}$	$\frac{.051(1.3)}{.008(0.2)}$	$\frac{.059(1.5)}{.035(0.9)}$	$\frac{.209(5.3)}{.185(4.7)}$	$\frac{.059(1.5)}{.035(0.9)}$

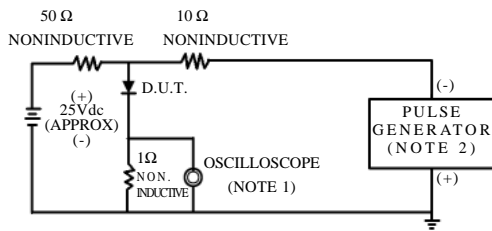
DO – 214AC

FFM101 – FFM107

1 A 片式快速二极管额定值与特性曲线

RATING & CHARACTERISTIC CURVES OF 1A FAST RECOVERY SMA DIODES

FIG.1-TEST CIRCUIT DIAGRAM AND REVERSE RECOVERY TIME CHARACTERISTIC



NOTES: 1. Rise Time=7ns max.
Input Impedance=1megohm.22pF.
2. Rise Time=10ns max.
Source Impedance=50 ohms.

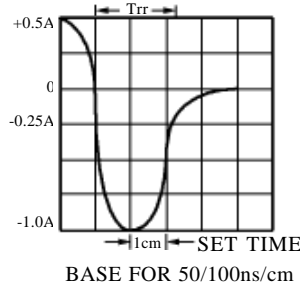


FIG. 2 – TYPICAL FORWARD CURRENT DERATING CURVE

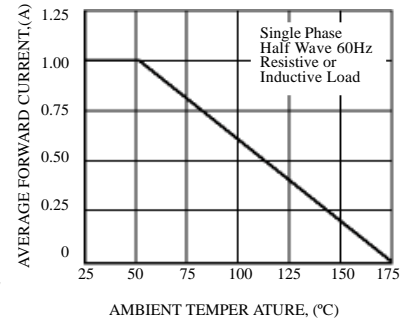


FIG. 3 – TYPICAL INSTANTANEOUS FORWARD CHARACTERISTICS

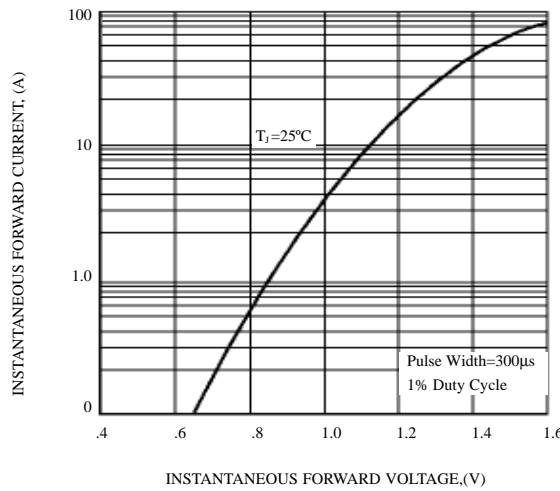


FIG. 4 – MAXIMUM NON-REPETITIVE FORWARD SURGE CURRENT

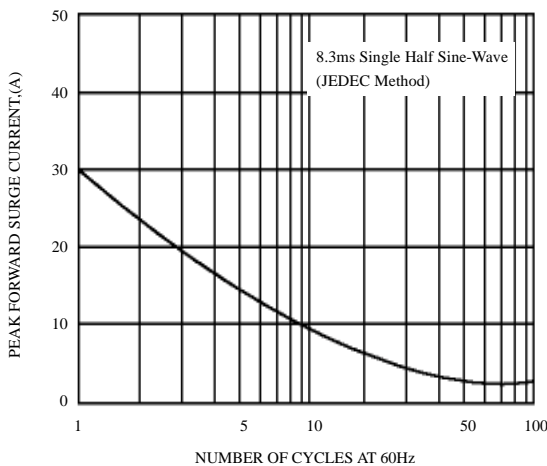


FIG. 5 – TYPICAL JUNCTION CAPACITANCE

