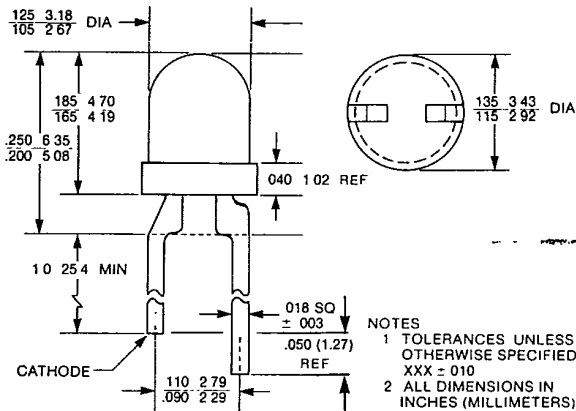


GENERAL INSTRUMENT

CLEAR LENS T-100 SOLID STATE LAMPS

YELLOW MV5362X TINTED, HLMP-1440, MV5360 PALE TINT
HIGH EFFICIENCY GREEN MV5462X TINTED, HLMP-1540, MV5460 PALE TINT
HIGH EFFICIENCY RED MV5762X TINTED, HLMP-1340, MV5760 PALE TINT

PACKAGE DIMENSIONS



NOTES
 1 TOLERANCES UNLESS OTHERWISE SPECIFIED XXX ± 010
 2 ALL DIMENSIONS IN INCHES (MILLIMETERS)

C1533G

DESCRIPTION

These solid state indicators offer a variety of color selection. The High Efficiency Red and Yellow devices are made with gallium arsenide phosphide on gallium phosphide. All are encapsulated in epoxy packages and have clear lenses. Their small size, wide viewing angle, and small square leads contribute to their versatility as all-purpose indicators. All types are tinted to aid identification.

FEATURES

- Standard and Ultrabright devices
- Clear tinted lenses
- 100 mil lead spacing
- High efficiency GaP
- Versatile mounting on PC board or panel
- Long life—solid state reliability
- Low power requirements
- Compact, rugged, lightweight
- T-1 diameter
- Replacement for the HLMP-1X20/1 Series
- Excellent for switch backlighting

PHYSICAL CHARACTERISTICS

TYPE	SOURCE COLOR	LENS EFFECT	LUMINOUS INTENSITY at 25° C (mcd)		TEST CONDITION
			MIN.	TYP.	
Ultrabright HLMP-1440 MV5360 (HLMP-1420) MV53621 MV53622	Yellow	Pale Tint	24.0	60.0	I _f = 20 mA
	Yellow	Pale Tint	6.0	12.0	
	Yellow	Tinted	3.0	4.0	
	Yellow	Tinted	6.0	8.0	
Ultrabright HLMP-1540 MV5460 (HLMP-1520) MV54624 (HLMP-1521)	High Efficiency Green	Pale Tint	24.0	60.0	I _f = 20 mA
	High Efficiency Green	Pale Tint	6.0	12.0	
	High Efficiency Green	Tinted	6.0	12.0	
Ultrabright HLMP-1340 MV5760 (HLMP-1320) MV57620 MV57621 MV57622 (HLMP-1321)	High Efficiency Red	Pale Tint	24.0	60.0	I _f = 20 mA
	High Efficiency Red	Pale Tint	6.0	12.0	
	High Efficiency Red	Tinted	1.5	2.0	I _f = 10 mA
	High Efficiency Red	Tinted	3.0	4.0	
	High Efficiency Red	Tinted	6.0	12.0	

Lamps

HLMP-1X40 MV5X62X MV5X60

88D 03162 DT-41-21

ABSOLUTE MAXIMUM RATINGS (T_A = 25° C Unless Otherwise Specified)

Power dissipation	120 mW
Derate linearly from 50°	0.4 mA/° C
Storage and operating temperature	-55° C to +100° C
Lead soldering time at 260° C (1/16 inch from body)	5 sec.
Continuous forward current	30 mA
Peak forward current (1 μsec pulse, 0.3% duty cycle)	90 mA
Reverse voltage	5.0 V

ELECTRO-OPTICAL CHARACTERISTICS (25° C Free Air Temperature Unless Otherwise Specified)

PARAMETER	TEST CONDITIONS	UNITS	MV5362X MV5360	MV5462X MV5460	MV5762X MV5760	HLMP-1340	HLMP-1440	HLMP-1540
Forward voltage (V _F)								
typ.	I _F = 10 mA	V	2.1	2.1*	2.0	2.2*	2.2*	2.2*
max.			3.0	3.0*	3.0	3.0*	3.0*	3.0*
Peak wavelength		nm	585	565	635	635	585	565
Spectral line half width		nm	35	40	45	45	35	40
Capacitance								
typ.	f = 1 MHz, V = 0	pF	45	20	45	45	45	20
Reverse voltage (V _R)								
min.	I _R = 100 μA	V	5.0	5.0	5.0	5.0	5.0	5.0
Viewing angle (total)								
typ.	See Fig. 3	degrees	45	45	45	24	24	24

*I_F = 20 mA

TYPICAL ELECTRO-OPTICAL CHARACTERISTIC CURVES (25° C Free Air Temperature Unless Otherwise Specified)

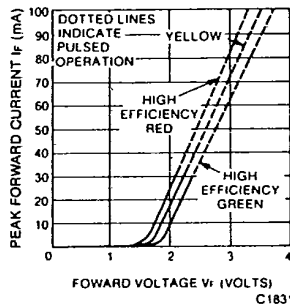


Fig. 1. Forward Current vs. Forward Voltage

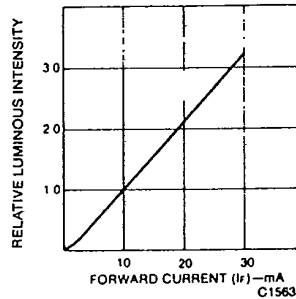


Fig. 2. Relative Luminous Intensity vs. Forward Current

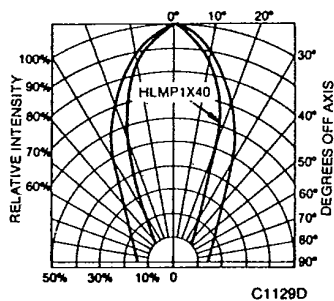


Fig. 3. Spatial Distribution

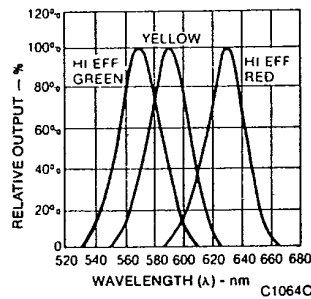


Fig. 4. Spectral Distribution