

For most current data sheet and other product information, visit www.burr-brown.com

DMOS 500mA Low Dropout Regulator

FEATURES

- **NEW DMOS TOPOLOGY:**
 Ultra Low Dropout Voltage:
 115mV typ at 500mA and 3.3V Output
 Output capacitor NOT required for stability
- **FAST TRANSIENT RESPONSE**
- **VERY LOW NOISE: 33µVrms**
- **HIGH ACCURACY: ±2% max**
- **HIGH EFFICIENCY:**
 $I_{GND} = 1mA$ at $I_{OUT} = 500mA$
 Not Enabled: $I_{GND} = 0.5µA$
- **2.5V, 2.7V, 3.0V, 3.3V, 5.0V AND
 ADJUSTABLE OUTPUT VERSIONS**
- **FOLDBACK CURRENT LIMIT**
- **THERMAL PROTECTION**
- **OUTPUT VOLTAGE ERROR INDICATOR⁽¹⁾**
- **SMALL SURFACE-MOUNT PACKAGES:
 SOT223-5, DPAK-5, SO-8**

APPLICATIONS

- **PORTABLE COMMUNICATION DEVICES**
- **BATTERY-POWERED EQUIPMENT**
- **PERSONAL DIGITAL ASSISTANTS**
- **MODEMS**
- **BAR-CODE SCANNERS**
- **BACKUP POWER SUPPLIES**

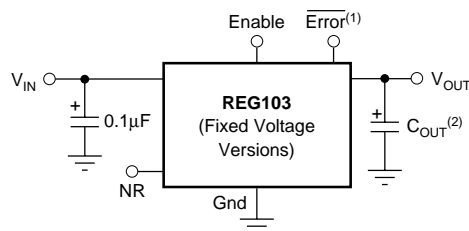
DESCRIPTION

The REG103 is a family of low noise, low dropout linear regulators with low ground pin current. Its new DMOS topology provides significant improvement over previous designs, including low dropout voltage (only 115mV typ at full load), and better transient performance. In addition, no output capacitor is required for stability, unlike conventional low dropout regulators that are difficult to compensate and require expensive low ESR capacitors greater than 1µF.

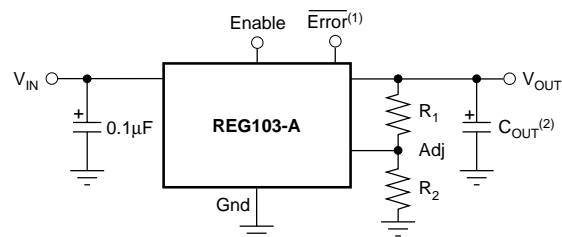
Typical ground pin current is only 1mA (at $I_{OUT} = 500mA$) and drops to 0.5µA in “not enabled” mode. Unlike regulators with PNP pass devices, quiescent current remains relatively constant over load variations and under dropout conditions.

The REG103 has very low output noise (typically 33µVrms for $V_{OUT} = 3.3V$ with $C_{NR} = 0.01µF$), making it ideal for use in portable communications equipment. On-chip trimming results in high output voltage accuracy. Accuracy is maintained over temperature, line, and load variations. Key parameters are guaranteed over the specified temperature range (-40°C to +85°C).

The SO-8 version of the REG103 has an $\overline{\text{Error}}$ pin which provides a “power good” flag indicating the regulator is in regulation. The REG103 is well protected: internal circuitry provides a current limit which protects the load from damage. Thermal protection circuitry keeps the chip from being damaged by excessive temperature. In addition to the SO-8 package, the REG103 is also available in the DPAK and the SOT223-5.

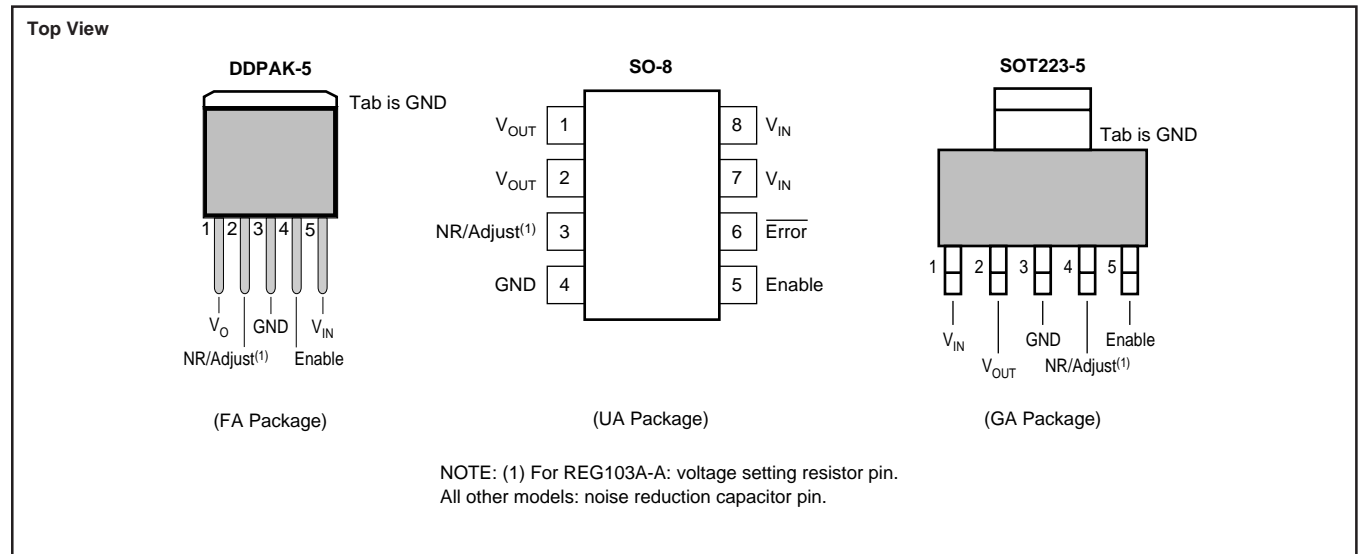


NR = Noise Reduction



NOTE: (1) SO-8 Package Only. (2) Optional.

PIN CONFIGURATIONS



ABSOLUTE MAXIMUM RATINGS⁽¹⁾

Supply Input Voltage, V_{IN}	-0.3V to 16V
Enable Input	-0.3V to V_{IN}
Error Flag Output	-0.3V to 6V
Error Flag Current	2mA
Output Short-Circuit Duration	Indefinite
Operating Temperature Range	-55°C to +125°C
Storage Temperature Range	-65°C to +150°C
Junction Temperature	-55°C to +150°C
Lead Temperature (soldering, 3s, SO-8, SOT and DDPAK)	+240°C

NOTE: (1) Stresses above these ratings may cause permanent damage. Exposure to absolute maximum conditions for extended periods may degrade device reliability.



ELECTROSTATIC DISCHARGE SENSITIVITY

This integrated circuit can be damaged by ESD. Burr-Brown recommends that all integrated circuits be handled with appropriate precautions. Failure to observe proper handling and installation procedures can cause damage.

ESD damage can range from subtle performance degradation to complete device failure. Precision integrated circuits may be more susceptible to damage because very small parametric changes could cause the device not to meet its published specifications.

The information provided herein is believed to be reliable; however, BURR-BROWN assumes no responsibility for inaccuracies or omissions. BURR-BROWN assumes no responsibility for the use of this information, and all use of such information shall be entirely at the user's own risk. Prices and specifications are subject to change without notice. No patent rights or licenses to any of the circuits described herein are implied or granted to any third party. BURR-BROWN does not authorize or warrant any BURR-BROWN product for use in life support devices and/or systems.

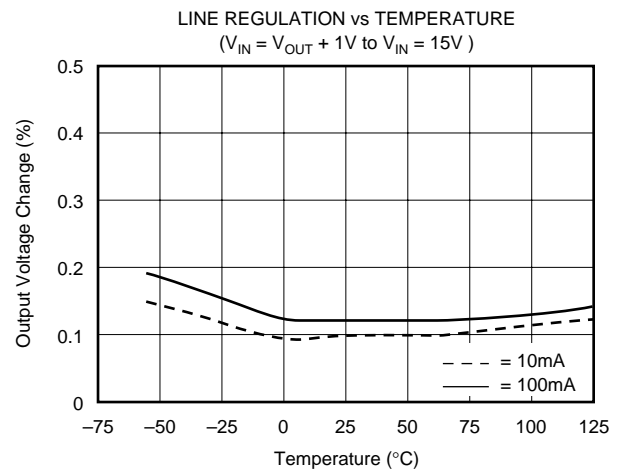
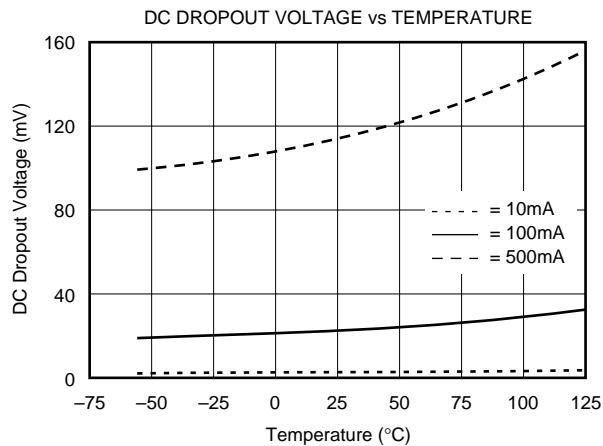
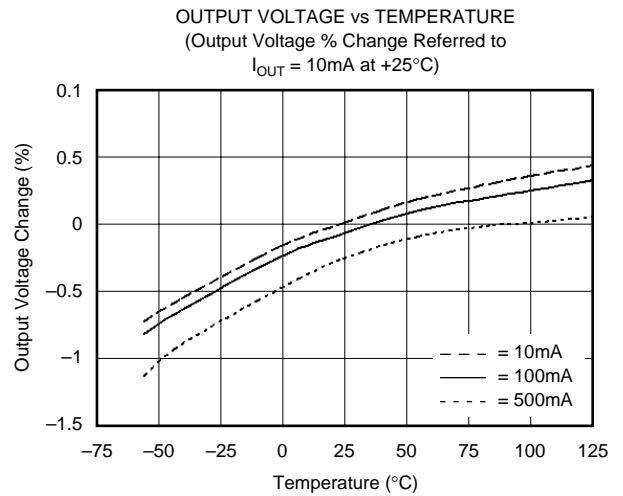
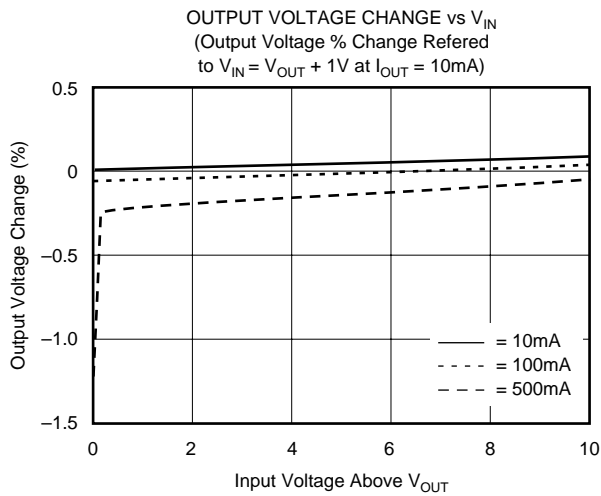
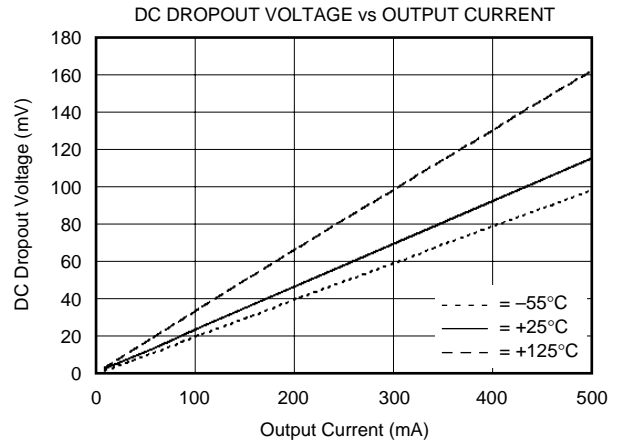
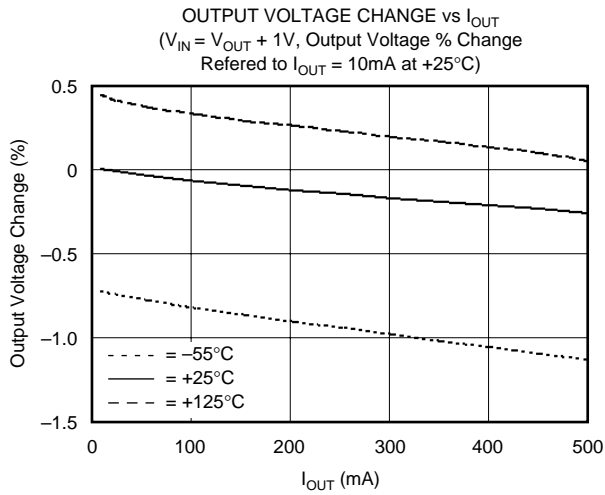
PACKAGE/ORDERING INFORMATION

PRODUCT	PACKAGE	PACKAGE DRAWING NUMBER	SPECIFIED TEMPERATURE RANGE	PACKAGE MARKING	ORDERING NUMBER ⁽¹⁾	TRANSPORT MEDIA
5V Output REG103FA-5 ⁽²⁾ " REG103UA-5 " REG103GA-5 ⁽²⁾ "	DDPAK-5 " SO-8 " SOT223-5 "	325 " 182 " 364 "	-40°C to +85°C " -40°C to +85°C " -40°C to +85°C "	REG103FA-5.0 " REG103U50 " R103G50 "	REG103FA-5 REG103FA-5/500 REG103UA-5 REG103UA-5/2K5 REG103GA-5 REG103GA-5/2K5	Rails Tape and Reel Rails Tape and Reel Rails Tape and Reel
3.3V Output REG103FA-3.3 ⁽²⁾ " REG103UA-3.3 " REG103GA-3.3 ⁽²⁾ "	DDPAK-5 " SO-8 " SOT223-5 "	325 " 182 " 364 "	-40°C to +85°C " -40°C to +85°C " -40°C to +85°C "	REG103FA-3.3 " REG103UA4 " R103G33 "	REG103FA-3.3 REG103FA-3.3/500 REG103UA-3.3 REG103UA-3.3/2K5 REG103GA-3.3 REG103GA-3.3/2K5	Rails Tape and Reel Rails Tape and Reel Rails Tape and Reel
3.0V Output REG103FA-3 ⁽²⁾ " REG103UA-3 ⁽²⁾ " REG103GA-3 ⁽²⁾ "	DDPAK-5 " SO-8 " SOT223-5 "	325 " 182 " 364 "	-40°C to +85°C " -40°C to +85°C " -40°C to +85°C "	REG103FA-3.0 " REG103U30 " R103G30 "	REG103FA-3 REG103FA-3/500 REG103UA-3 REG103UA-3/2K5 REG103GA-3 REG103GA-3/2K5	Rails Tape and Reel Rails Tape and Reel Rails Tape and Reel
2.7V Output REG103FA-2.7 ⁽²⁾ " REG103UA-2.7 " REG103GA-2.7 ⁽²⁾ "	DDPAK-5 " SO-8 " SOT223-5 "	325 " 182 " 364 "	-40°C to +85°C " -40°C to +85°C " -40°C to +85°C "	REG103FA-2.7 " REG103U27 " R103G27 "	REG103FA-2.7 REG103FA-2.7/500 REG103UA-2.7 REG103UA-2.7/2K5 REG103GA-2.7 REG103GA-2.7/2K5	Rails Tape and Reel Rails Tape and Reel Rails Tape and Reel
2.5V Output REG103FA-2.5 ⁽²⁾ " REG103UA-2.5 " REG103GA-2.5 ⁽²⁾ "	DDPAK-5 " SO-8 " SOT223-5 "	325 " 182 " 364 "	-40°C to +85°C " -40°C to +85°C " -40°C to +85°C "	REG103FA-2.5 " REG103U25 " R103G25 "	REG103FA-2.5 REG103FA-2.5/500 REG103UA-2.5 REG103UA-2.5/2K5 REG103GA-2.5 REG103GA-2.5/2K5	Rails Tape and Reel Rails Tape and Reel Rails Tape and Reel
Adjustable Output REG103FA-A ⁽²⁾ " REG103UA-A " REG103GA-A ⁽²⁾ "	DDPAK-5 " SO-8 " SOT223-5 "	325 " 182 " 364 "	-40°C to +85°C " -40°C to +85°C " -40°C to +85°C "	REG103FAA " REG103UA " R103GA "	REG103FA-A REG103FA-A/500 REG103UA-A REG103UA-A/2K5 REG103GA-A REG103GA-A/2K5	Rails Tape and Reel Rails Tape and Reel Rails Tape and Reel

NOTES: (1) Models with a slash (/) are available only in Tape and Reel in the quantities indicated (e.g., /2K5 indicates 2500 devices per reel). Ordering 2500 pieces of "REG103UA-5/2K5" will get a single 2500-piece Tape and Reel. (2) Scheduled availability June, 2000.

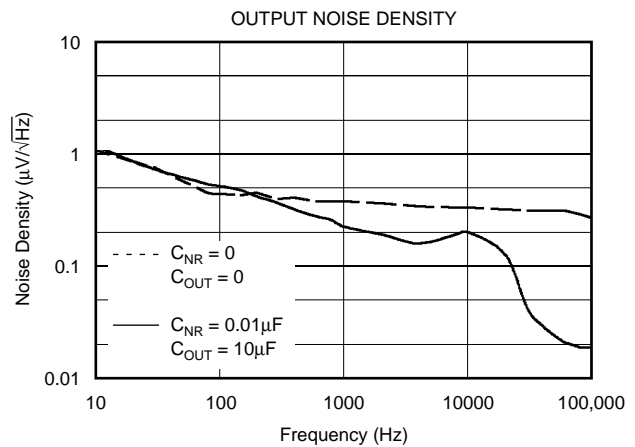
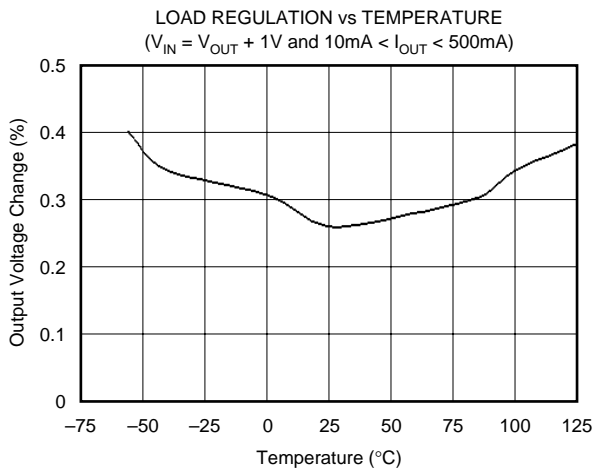
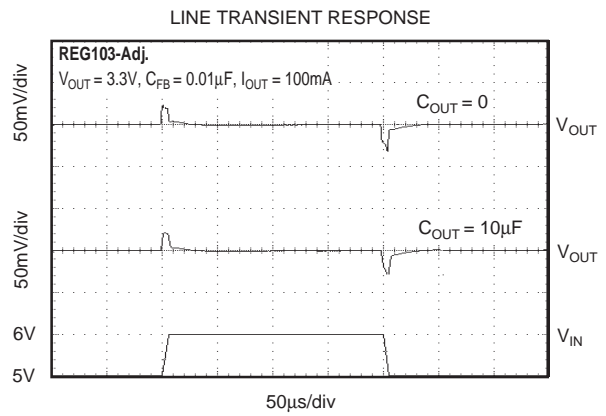
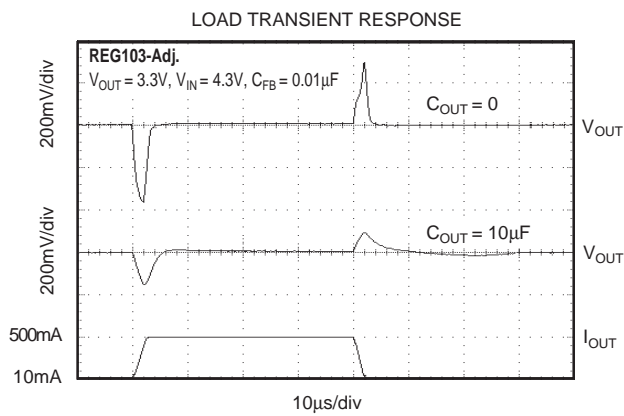
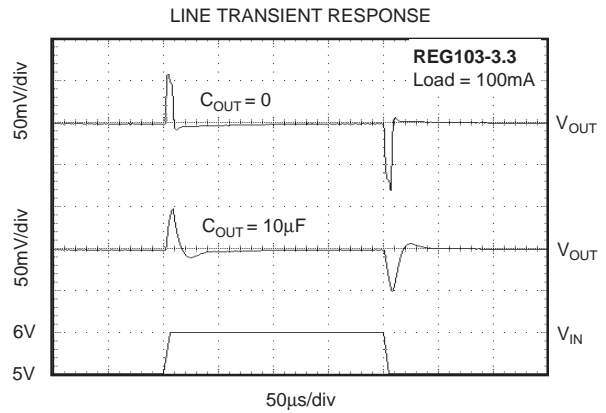
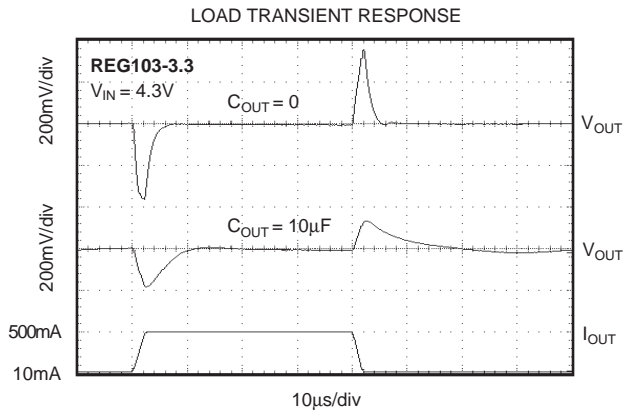
TYPICAL PERFORMANCE CURVES

For all models, at $T_J = +25^\circ\text{C}$ and $V_{\text{ENABLE}} = 2\text{V}$, unless otherwise noted.



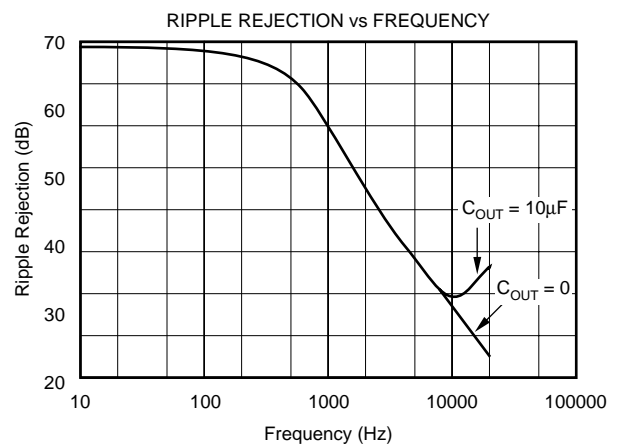
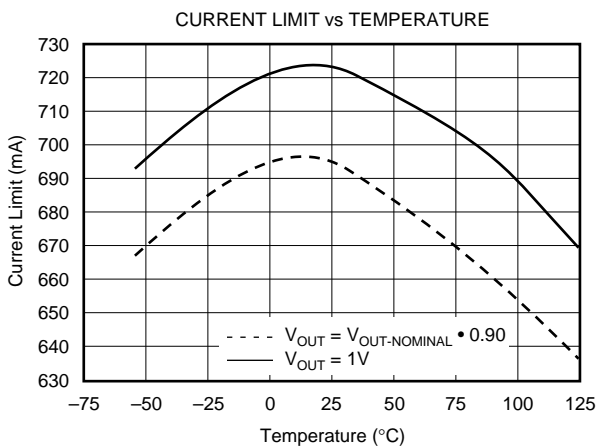
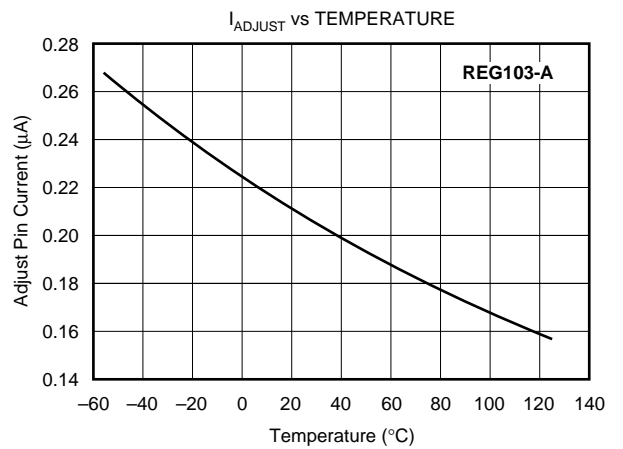
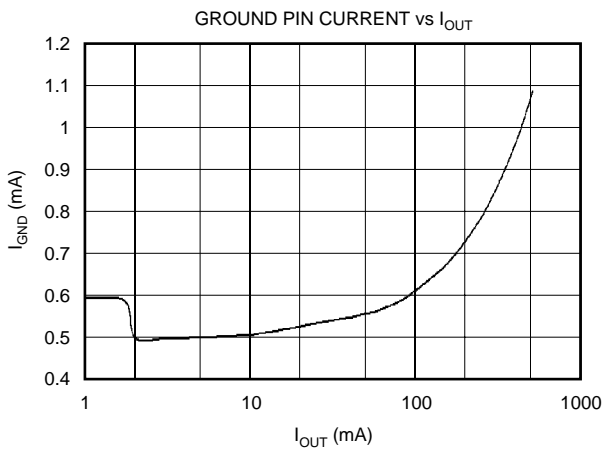
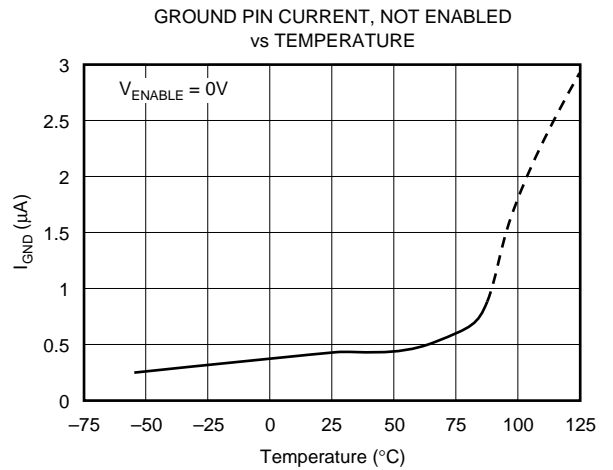
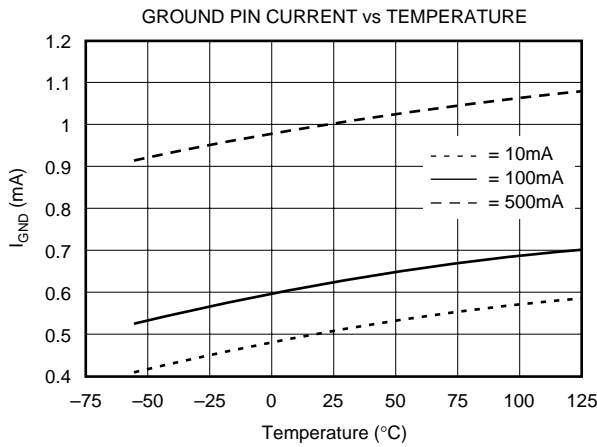
TYPICAL PERFORMANCE CURVES (Cont.)

For all models, at $T_J = +25^\circ\text{C}$ and $V_{\text{ENABLE}} = 2\text{V}$, unless otherwise noted.



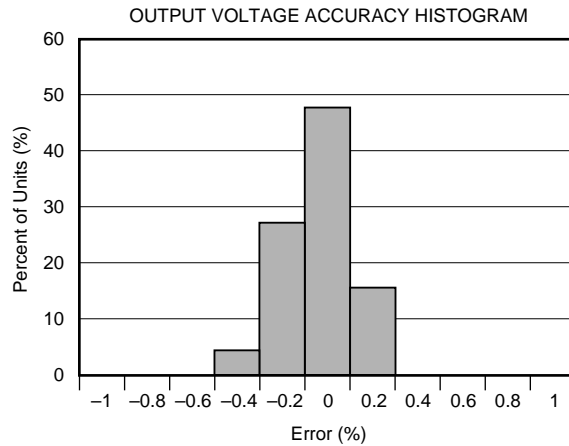
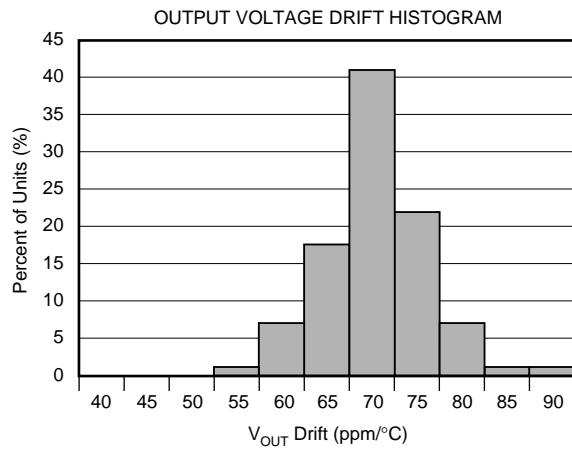
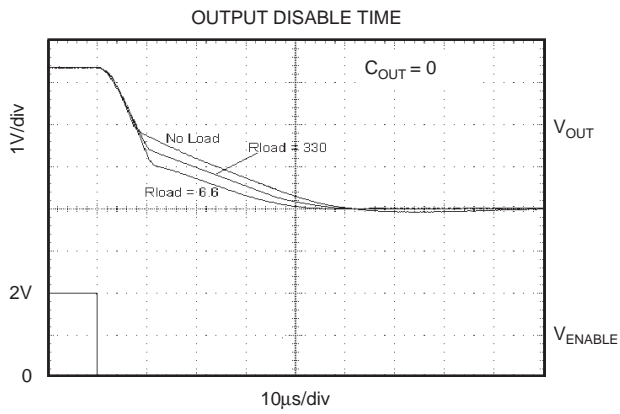
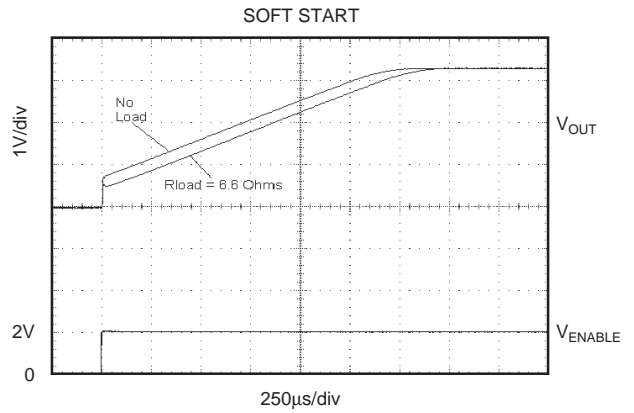
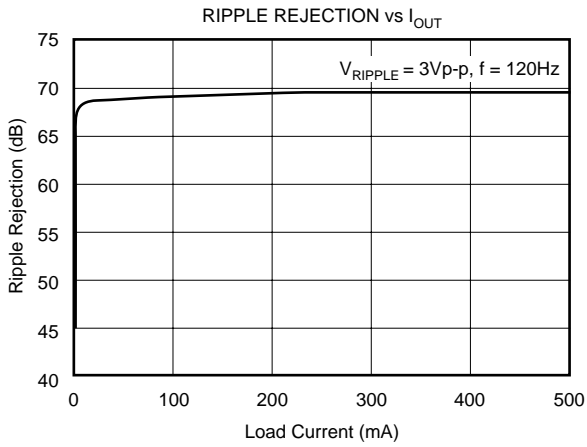
TYPICAL PERFORMANCE CURVES (Cont.)

For all models, at $T_J = +25^\circ\text{C}$ and $V_{\text{ENABLE}} = 2\text{V}$, unless otherwise noted.



TYPICAL PERFORMANCE CURVES (Cont.)

For all models, at $T_J = +25^\circ\text{C}$ and $V_{\text{ENABLE}} = 2\text{V}$, unless otherwise noted.



BASIC OPERATION

The REG103 series is a family of LDO (Low Drop-Out) linear regulators. The family includes five fixed output versions (2.5V to 5.0V) and an adjustable output version. An internal DMOS power device provides low dropout regulation with near constant ground pin current (largely independent of load and drop-out conditions) and very fast line and load transient response. All versions include internal current limit and thermal shutdown circuitry.

Figure 1 shows the basic circuit connections for the fixed voltage models. Figure 2 gives the connections for the adjustable output version (REG103A) and example resistor values for some commonly used output voltages. Values for other voltages can be calculated from the equation shown in Figure 2. The SO-8 package provides two pins each for V_{IN} and V_{OUT} . Both sets of pins **MUST** be used and connected adjacent to the device.

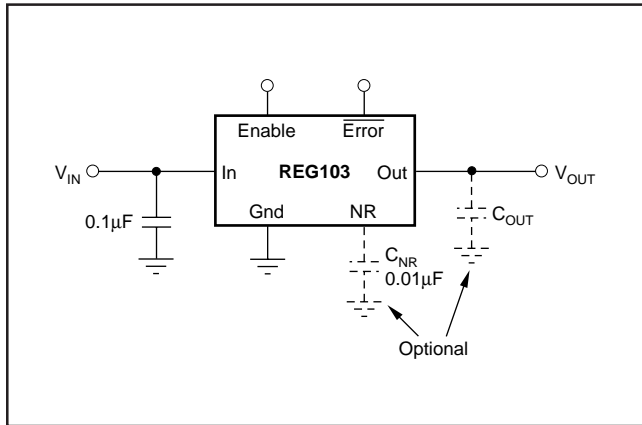


FIGURE 1. Fixed Voltage Nominal Circuit for REG103.

None of the versions require an output capacitor for regulator stability. The REG103 will accept any output capacitor type less than 1µF. For capacitance values larger than 1µF the effective ESR should be greater than 0.1Ω. This minimum ESR value includes parasitics such as printed circuit board traces, solder joints, and sockets. A minimum 0.1µF low ESR capacitor connected to the input supply voltage is recommended.

INTERNAL CURRENT LIMIT

The REG103 internal current limit has a typical value of 700mA. A fold-back feature limits the short-circuit current to a typical short-circuit value of 40mA. This circuit will protect the regulator from damage under all load conditions. A curve of V_{OUT} versus I_{OUT} is given in Figure 3.

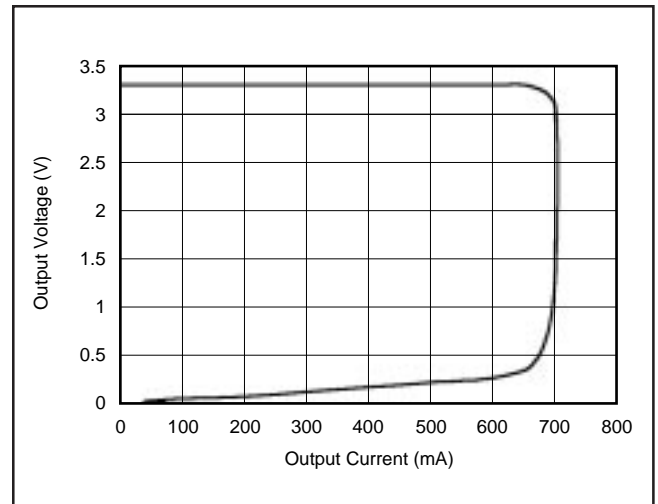


FIGURE 3. Foldback Current Limit of the REG103-3.3 at 25°C.

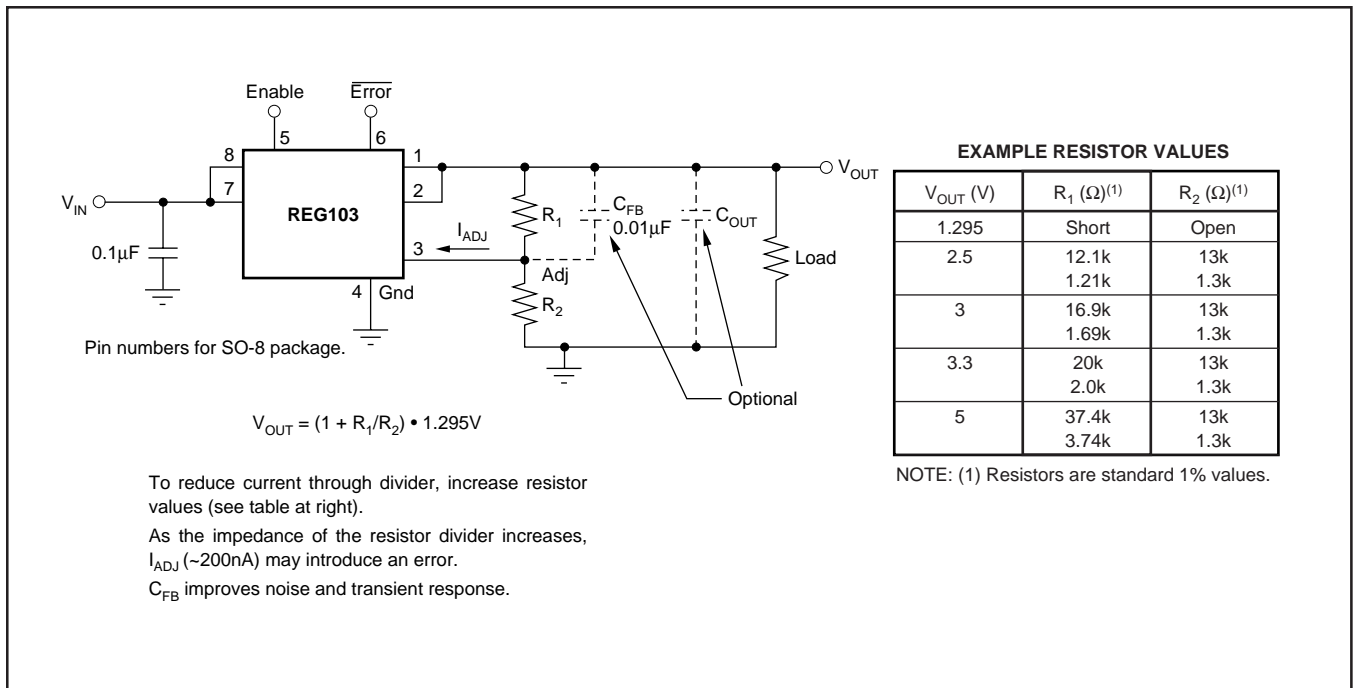


FIGURE 2. Adjustable Voltage Circuit for REG103A.

ENABLE

The Enable pin allows the regulator to be turned on and off. This pin is active high and compatible with standard TTL-CMOS levels. Inputs below 0.5V (max) turn the regulator off and all circuitry is disabled. Under this condition ground pin current drops to approximately 0.5μA.

When not used, the enable pin may be connected to V_{IN} . Internal to the part, the enable pin is connected to an input resistor-zener diode circuit, as shown in Figure 4, creating a nonlinear input impedance. The Enable Pin Current versus Applied Voltage relationship is shown in Figure 5. When the enable pin is connected to V_{IN} greater than 10V, a series resistor may be used to limit the current.

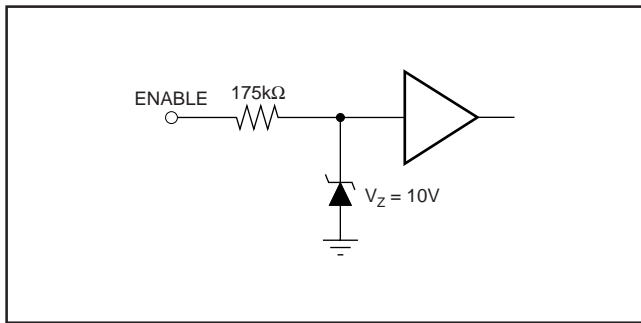


FIGURE 4. ENABLE Pin Equivalent Input Circuit.

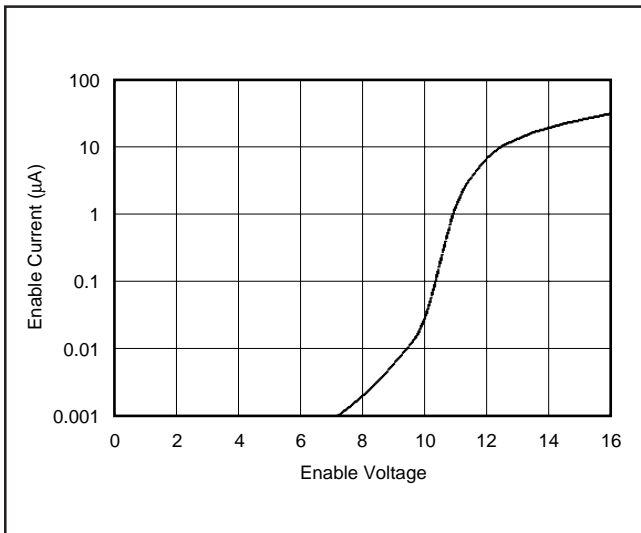


FIGURE 5. Enable Pin Current versus Applied Voltage.

ERROR FLAG

The error indication pin, only available on the SO-8 package version, provides a fault indication out of regulation condition. During a fault condition, error is pulled low by an open drain output device. The pin voltage, in the fault state, is typically less than 0.2V at 500μA.

A fault condition is indicated when the output voltage differs (either above or below) from the specified value by approximately 10%. Figure 6 shows a typical fault monitoring application.

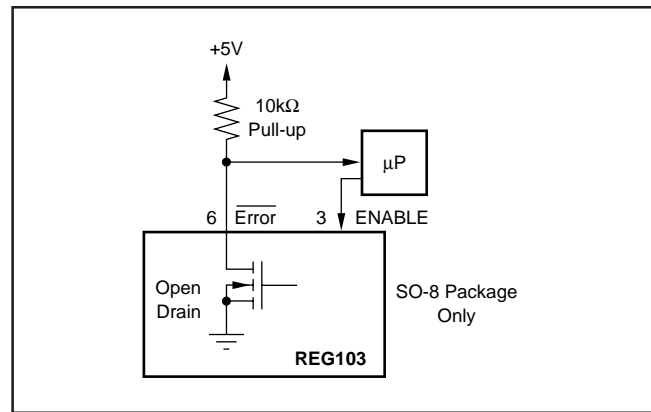


FIGURE 6. ERROR Pin Typical Fault Monitoring Circuit.

OUTPUT NOISE

A precision band-gap reference is used for the internal reference voltage, V_{REF} , for the REG103. This reference is the dominant noise source within the REG103. It generates approximately 45μVrms in the 10Hz to 100kHz bandwidth at the reference output. The regulator control loop gains up the reference noise, so that the noise voltage of the regulator is approximately given by:

$$V_N = 45\mu\text{Vrms} \frac{R_1 + R_2}{R_2} = 45\mu\text{Vrms} \cdot \frac{V_{OUT}}{V_{REF}}$$

Since the value of V_{REF} is 1.295V, this relationship reduces to:

$$V_N = 35 \frac{\mu\text{Vrms}}{\text{V}} \cdot V_{OUT}$$

Connecting a capacitor, C_{NR} , from the Noise Reduction (NR) pin to ground, can reduce the output noise voltage. Adding C_{NR} (see Figure 7) forms a low-pass filter for the voltage reference. For $C_{NR} = 10\text{nF}$, the total noise in the 10Hz to 100kHz bandwidth is reduced by approximately a factor of 3.5. This noise reduction effect is shown in Figure 8.

The REG103 adjustable version does not have the noise-reduction pin available, however, the adjust pin is the summing junction of the error amplifier. A capacitor, C_{FB} , connected from the output to the adjust pin will reduce both the output noise and the peak error from a load transient. See Figure 9 for improved output noise performance for two capacitor combinations.

The REG103 utilizes an internal charge pump to develop an internal supply voltage sufficient to drive the gate of the DMOS pass element above V_{IN} . The charge-pump switching noise (nominal switching frequency = 2MHz) is not measurable at the output of the regulator.

DROP-OUT VOLTAGE

The REG103 uses an N-channel DMOS as the “pass” element. When the input voltage is within a few hundred millivolts of the output voltage, the DMOS device behaves like a resistor. Therefore, for low values of V_{IN} to V_{OUT} , the

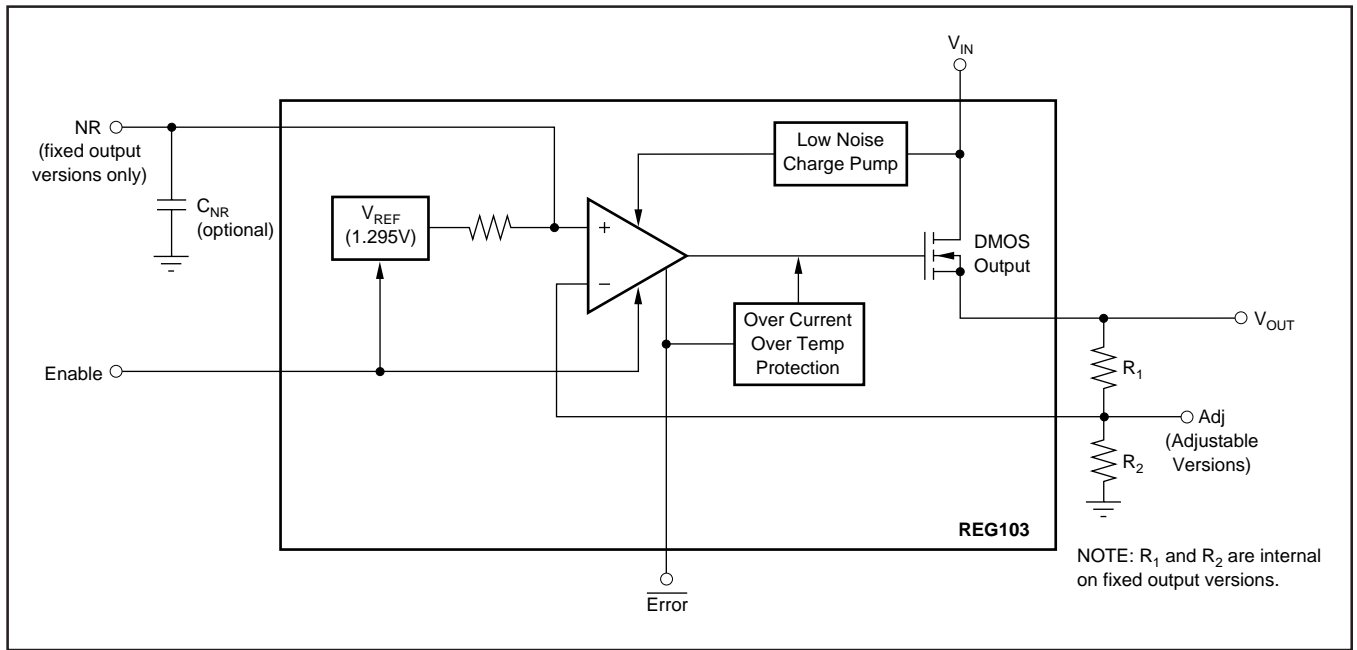


FIGURE 7. Block Diagram.

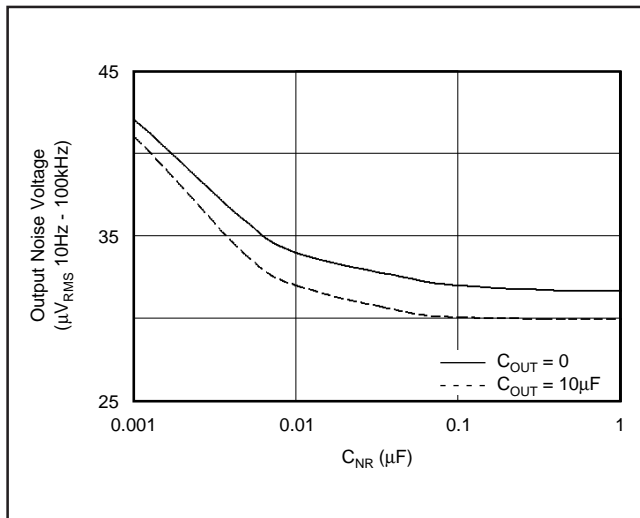


FIGURE 8. Output Noise versus Noise Reduction Capacitor.

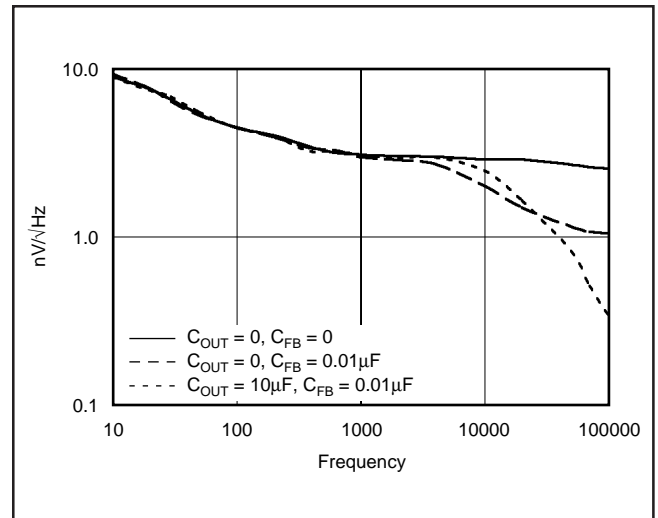


FIGURE 9. Output Noise Density on Adjustable Versions.

regulator's input-to-output resistance is the R_{dsON} of the DMOS pass element (typically 230mΩ). For static (DC) loads, the REG103 will typically maintain regulation down to V_{IN} to V_{OUT} voltage drop of 115mV at full rated output current. In Figure 10, the bottom line (DC dropout) shows the minimum V_{IN} to V_{OUT} voltage drop required to prevent drop-out under DC load conditions.

For large step changes in load current, the REG103 requires a larger voltage drop across it to avoid degraded transient response. The boundary of this "transient drop-out" region is shown as the top line in Figure 10. Values of V_{IN} to V_{OUT} voltage drop above this line insure normal transient response.

In the transient dropout region between "DC" and "Transient", transient response recovery time increases. The time required to recover from a load transient is a function of both the magnitude and rate of the step change in load current and

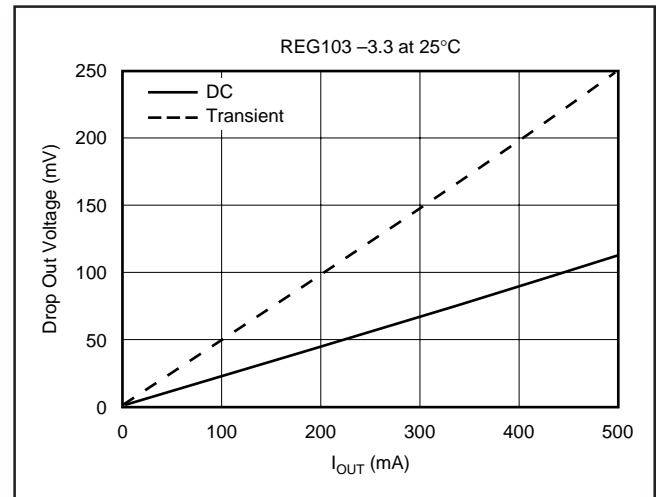


FIGURE 10. Transient and DC Dropout.

the available “headroom” V_{IN} to V_{OUT} voltage drop. Under worst-case conditions (full-scale load change with V_{IN} to V_{OUT} voltage drop close to DC dropout levels), the REG103 can take several hundred microseconds to re-enter the specified window of regulation.

TRANSIENT RESPONSE

The REG103 response to transient line and load conditions improves at lower output voltages. The addition of a capacitor (nominal value 10nF) from the output pin to ground may improve the transient response. In the adjustable version, the addition of a capacitor, C_{FB} (nominal value 10nF), from the output to the adjust pin will also improve the transient response.

THERMAL PROTECTION

Power dissipated within the REG103 will cause the junction temperature to rise. The REG103 has thermal shutdown circuitry that protects the regulator from damage. The thermal protection circuitry disables the output when the junction temperature reaches approximately 150°C, allowing the device to cool. When the junction temperature cools to approximately 130°C, the output circuitry is again enabled. Depending on various conditions, the thermal protection circuit may cycle on and off. This limits the dissipation of the regulator, but may have an undesirable effect on the load.

Any tendency to activate the thermal protection circuit indicates excessive power dissipation or an inadequate heat sink. For reliable operation, junction temperature should be limited to 125°C, maximum. To estimate the margin of safety in a complete design (including heat sink), increase the ambient temperature until the thermal protection is triggered. Use worst-case loads and signal conditions. For good reliability, thermal protection should trigger more than 35°C above the maximum expected ambient condition of your application. This produces a worst-case junction temperature of 125°C at the highest expected ambient temperature and worst-case load.

The internal protection circuitry of the REG103 has been designed to protect against overload conditions. It was not intended to replace proper heat sinking. Continuously running the REG103 into thermal shutdown will degrade reliability.

POWER DISSIPATION

The REG103 is available in three different package configurations. The ability to remove heat from the die is different for each package type and, therefore, presents different considerations in the printed circuit-board layout. The PCB area around the device that is free of other components moves the heat from the device to the ambient air. While it is difficult-to-impossible to quantify all of the variables in a thermal design of this type, performance data for several configurations are shown in Figure 11. In all cases the PCB copper area is bare copper, free of solder resist mask, and not solder plated. All examples are for 1-ounce copper. Using heavier copper will increase the effectiveness in moving the

heat from the device. In those examples where there is copper on both sides of the PCB, no connection has been provided between the two sides. The addition of plated through holes will improve the heat sink effectiveness.

Power dissipation depends on input voltage and load conditions. Power dissipation is equal to the product of the average output current times the voltage across the output element, V_{IN} to V_{OUT} voltage drop.

$$P_D = (V_{IN} - V_{OUT}) \cdot I_{OUT(AVG)}$$

Power dissipation can be minimized by using the lowest possible input voltage necessary to assure the required output voltage.

REGULATOR MOUNTING

The tab of both packages is electrically connected to ground. For best thermal performance, the tab of the DDPAK surface-mount version should be soldered directly to a circuit-board copper area. Increasing the copper area improves heat dissipation. Figure 12 shows typical thermal resistance from junction to ambient as a function of the copper area for the DDPAK.

Although the tabs of the DDPAK and the SOT-223 are electrically ground, they are not intended to carry any current. The copper pad that acts as a heat sink should be isolated from the rest of the circuit to prevent current flow through the device from the tab to the ground pin. Solder pad footprint recommendations for the various REG103 devices are presented in Application Bulletin “Solder Pad Recommendations for Surface-Mount Devices” (AB-132), available from the Burr-Brown web site (www.burr-brown.com).

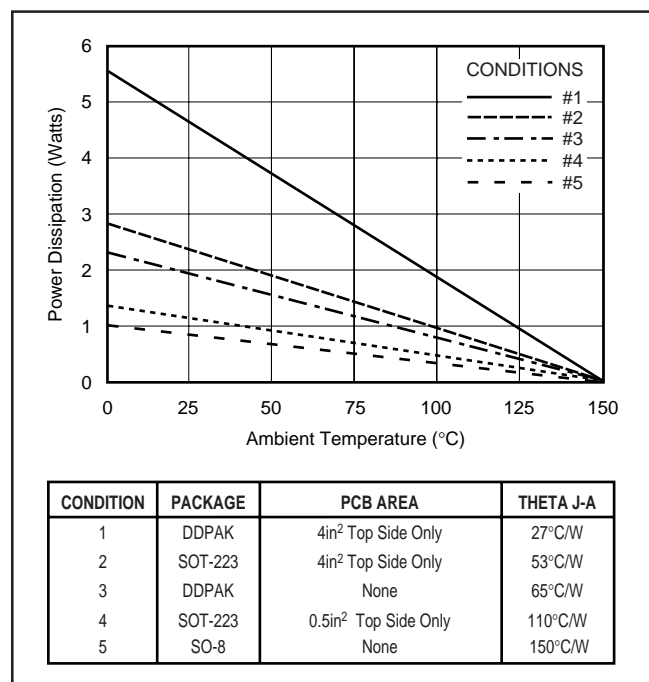


FIGURE 11. Maximum Power Dissipation versus Ambient Temperature for the Various Packages and PCB Heat Sink Configurations.

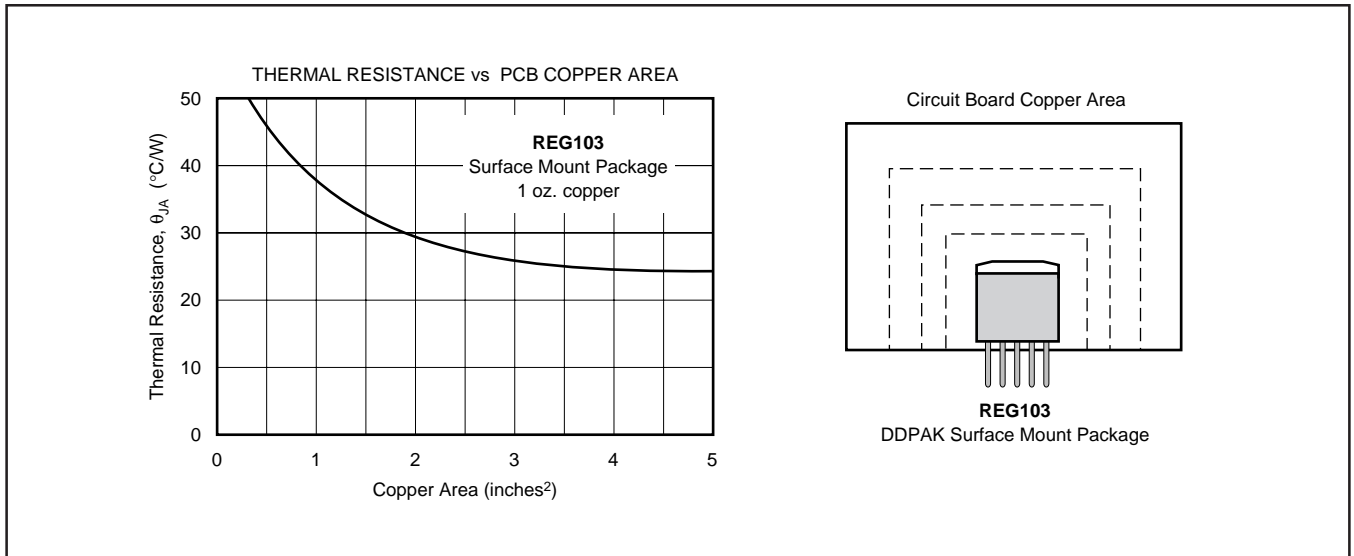


FIGURE 12. Thermal Resistance versus PCB Area for the Five Lead DDPAK.

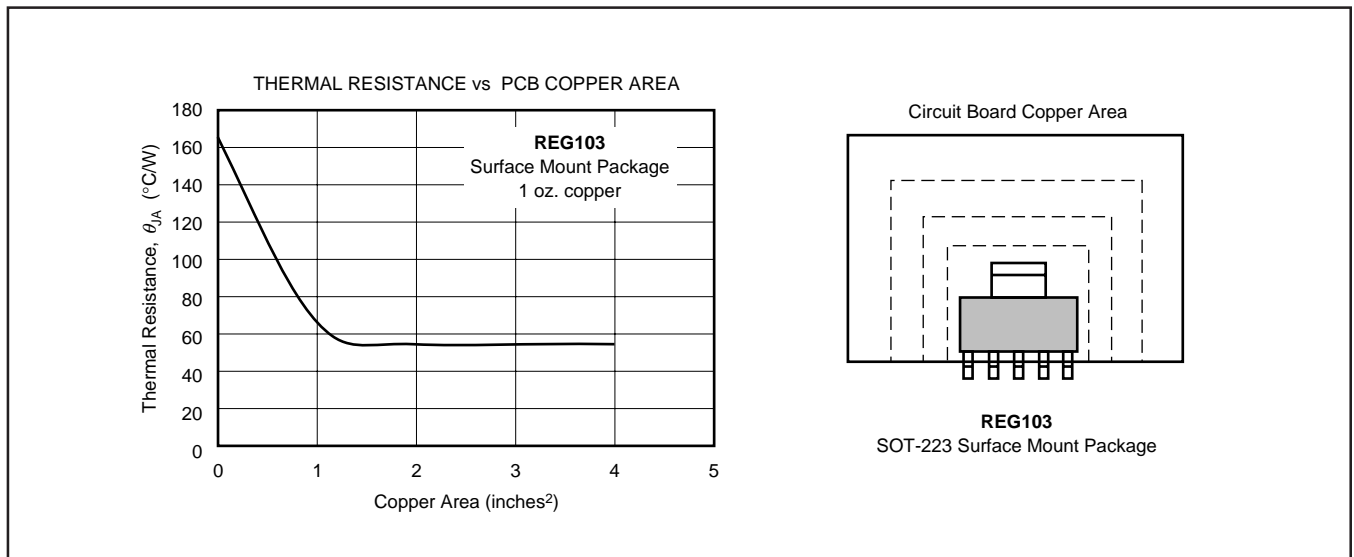


FIGURE 13. Thermal Resistance versus PCB Area for the Five Lead SOT-223.