

SANYO	No.911C	LA6458D,6458S
		Monolithic Linear IC High-Performance Dual Operational Amplifiers

The LA6458 consists of two independent, internally phase compensated operational amplifiers. Application areas include active filters, audio preamplifiers, and various electronic circuits.

Features

- . LA6458D : 8-pin DIP, LA6458S : 9-pin SEP
- . On-chip phase compensation circuit.
- . High gain, low noise.
- . Slew rate : 1.1V/us typ.

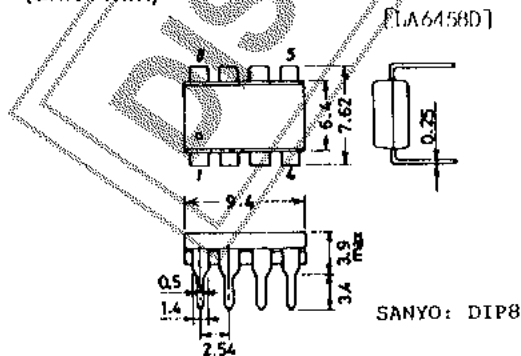
Maximum Ratings at $T_a=25^\circ\text{C}$

			unit
Supply Voltage	V_{CC}/V_{EE}	± 18	V
Differential Input Voltage	V_{ID}	± 30	V
Common-Mode Input Voltage	V_{IN}	± 15	V
Allowable Power Dissipation	P_{Dmax}	LA6458D	500 mW
		LA6458S	500 mW
Operating Temperature	T_{opr}	-20 to +75	$^\circ\text{C}$
Storage Temperature	T_{stg}	-40 to +125	$^\circ\text{C}$

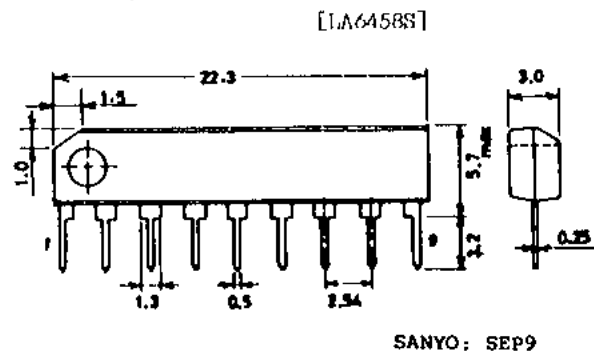
Operating Characteristics at $T_a=25^\circ\text{C}, V_{CC}=15\text{V}, V_{EE}=-15\text{V}$

		min	typ	max	unit
Input Offset Voltage	V_{IO} $R_S \leq 10\text{kohms}$		0.5	6	mV
Input Offset Current	I_{IO}		5	200	nA
Input Bias Current	I_B		60	500	nA
Common-Mode Input Voltage	V_{ICM}	± 12	± 14		V
Common-Mode Rejection Ratio	CMR	70	90		dB
Voltage Gain	V_{GO} $R_I \geq 2\text{kohms}, V_O = \pm 10\text{V}$	86	100		dB
Maximum Output Voltage	V_O $R_L \leq 10\text{kohms}$		± 12	± 14	V
		$R_L \geq 2\text{kohms}$	± 10	± 13	V
Slew Rate	SR $V_G=0, R_L \geq 2\text{kohms}$		1.1		V/ μs
Equivalent Input Noise Voltage	V_{NI} $R_S=1\text{kohm}, B. P. F=10\text{Hz to } 30\text{kHz}$		1.7		μV
Current Dissipation	I_{CO}		3.5	6	mA
Supply Voltage Rejection	ΔV_R $R_S \leq 10\text{kohms}$		30	150	$\mu\text{V/V}$

Package Dimensions 3001B-DBIC
(unit : mm)

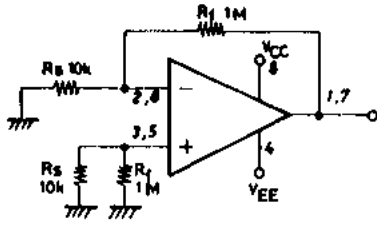


Package Dimensions 3017B-S9IC
(unit : mm)

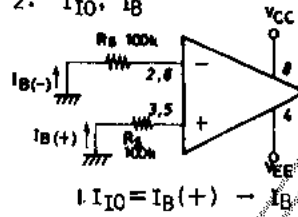


Test Circuits (Pin assignment: DIP)

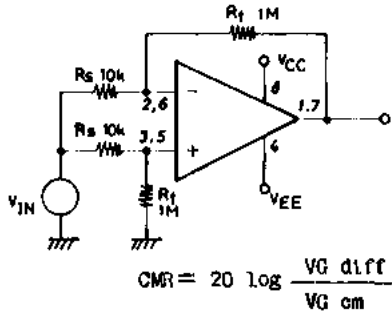
1. V_{IO} , SVR



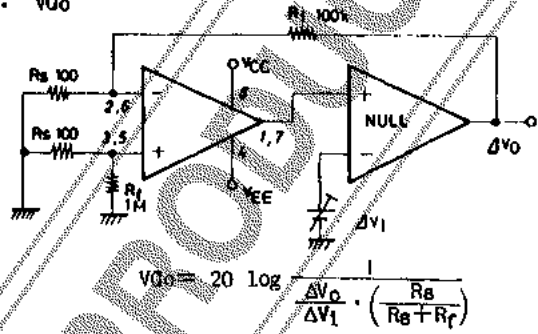
2. I_{IO} , I_B



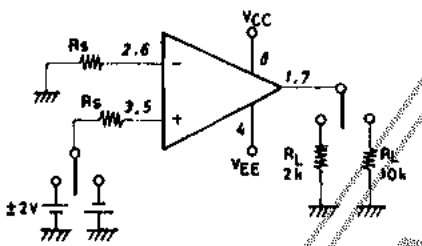
3. V_{ICM} , CMR



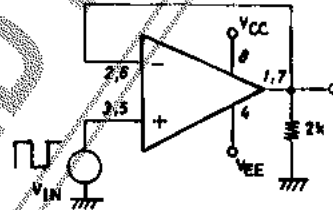
4. V_{GO}



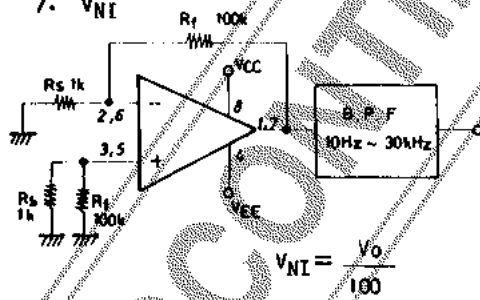
5. V_O



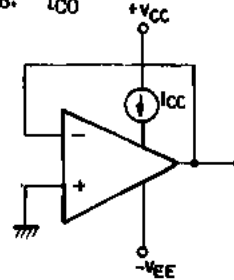
6. SR



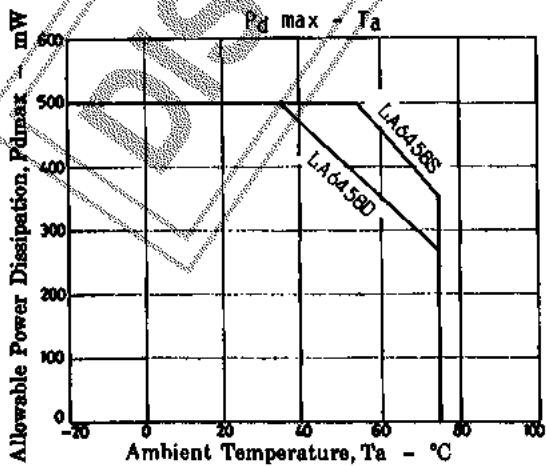
7. V_{NI}



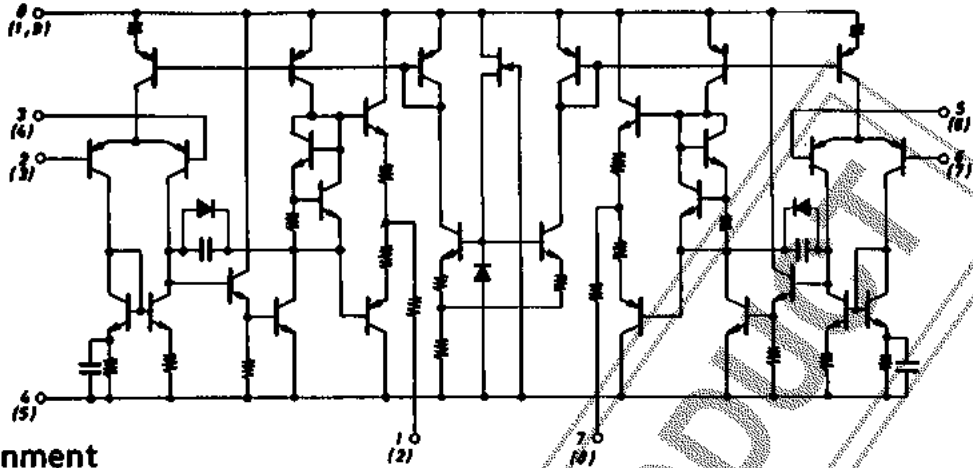
8. I_{CO}



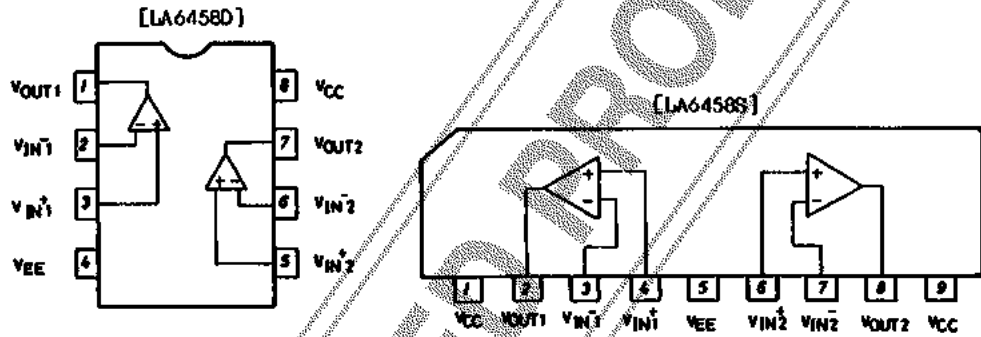
Unit (resistance: Ω)



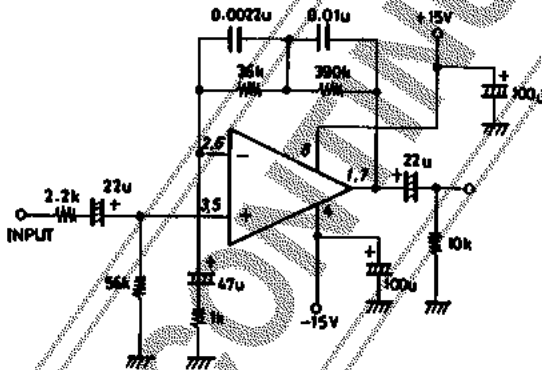
Equivalent Circuit : () of pin No. : LA6458S



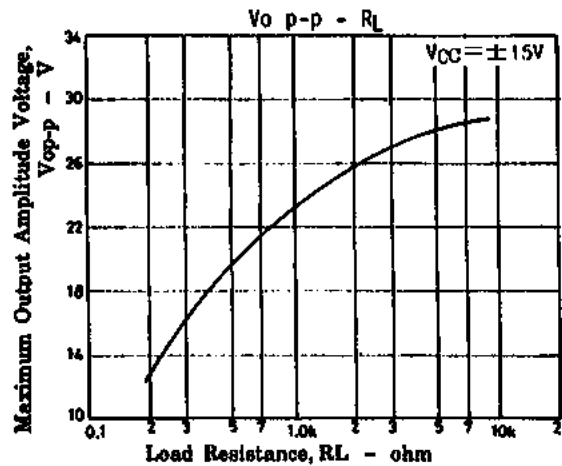
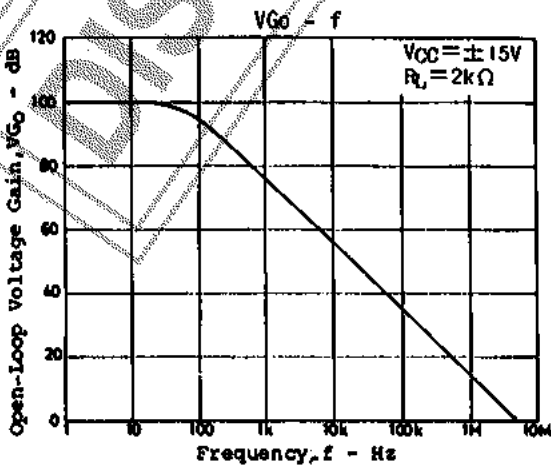
Pin Assignment



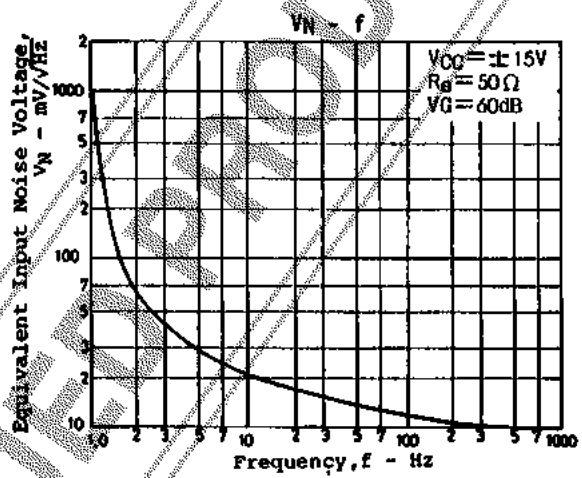
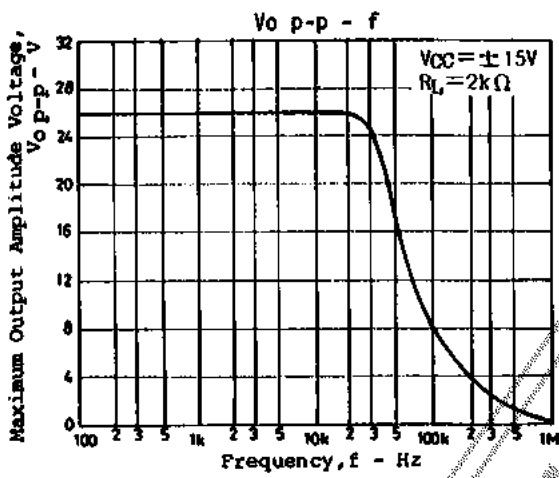
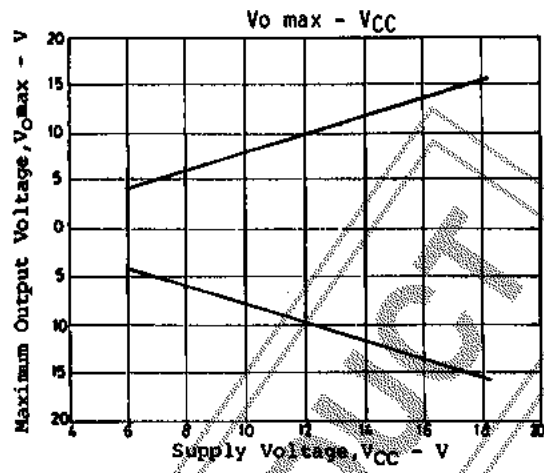
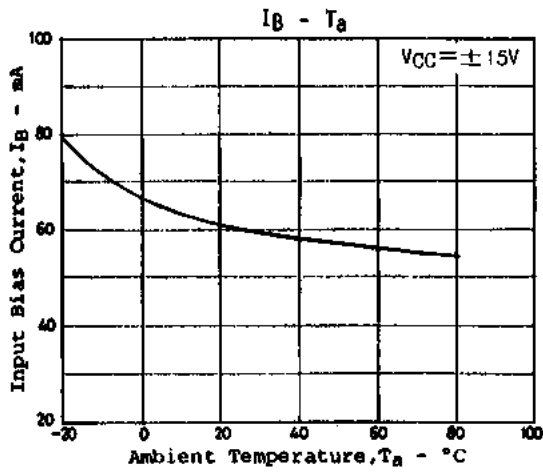
Sample Application Circuit/ RIAA preamplifier (VG=32.5dB)



Unit (resistance:Ω capacitance:F)



LA6458D.6458S



DISCONTINUED