

SURFACE MOUNT SWITCHING DIODES

VOLTAGE 75 Volts

POWER 200 mWatts

PACKAGE SOT-323

FEATURES

- Fast switching speed.
- Surface mount package Ideally Suited for Automatic insertion
- Electrically Identical to Standard JEDEC
- High Conductance

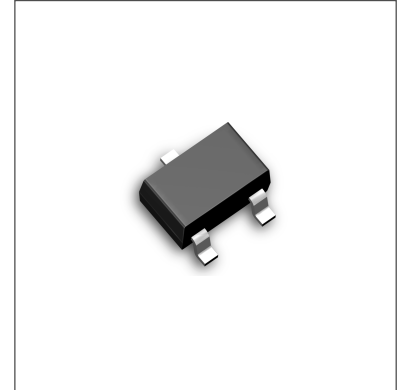
MECHANICAL DATA

Case: SOT-323, Plastic

Terminals: Solderable per MIL-STD-202, Method 208

Approx. Weight: 0.008 gram

Marking: A2, A3



MAXIMUM RATINGS AND ELECTRICAL CHARACTERISTICS

Ratings at 25°C ambient temperature unless otherwise specified.

Single phase, half wave, 60 Hz, resistive or inductive load.

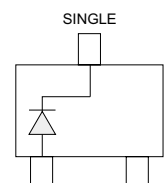
For capacitive load, derate current by 20%.

PARAMETER	SYMBOL	MMBD4148W	MMBD4448W	UNITS
Reverse Voltage	V _R	75	75	V
Peak Reverse Voltage	V _{RM}	100	100	V
Rectified Current (Average), Half Wave Rectification with Resistive Load and f >=50 Hz	I _o	150	150	mA
Peak Forward Surge Current, 8.3ms single half sine-wave superimposed on rated load (JEDEC method)	I _{FSM}	2.0	4.0	A
Power Dissipation Derate Above 25°C	P _{TOT}	200	200	mW
Maximum Forward Voltage @ I _F =5mA @ I _F =10mA	V _F	- 1.0	0.72 1.0	V
Maximum DC Reverse Current at Rated DC Blocking Voltage T _J = 25°C	I _R	2.5	2.5	μA
Typical Junction Capacitance(Notes1)	C _J	4.0	4.0	pF
Maximum Reverse Recovery (Notes2)	T _{RR}	4.0	4.0	ns
Maximum Thermal Resistance	RθJA	357		°C / W
Storage Temperature Range	T _J	-55 TO +125		°C

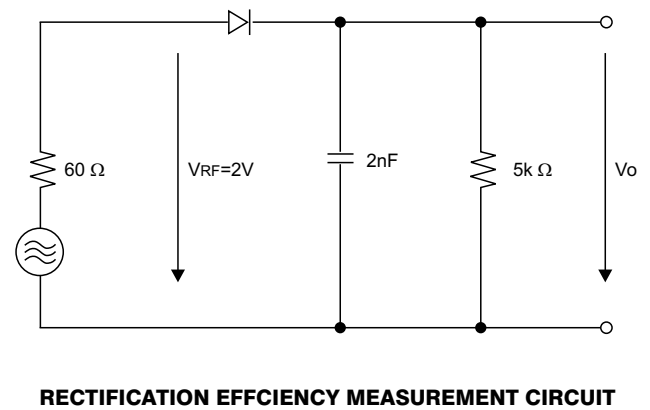
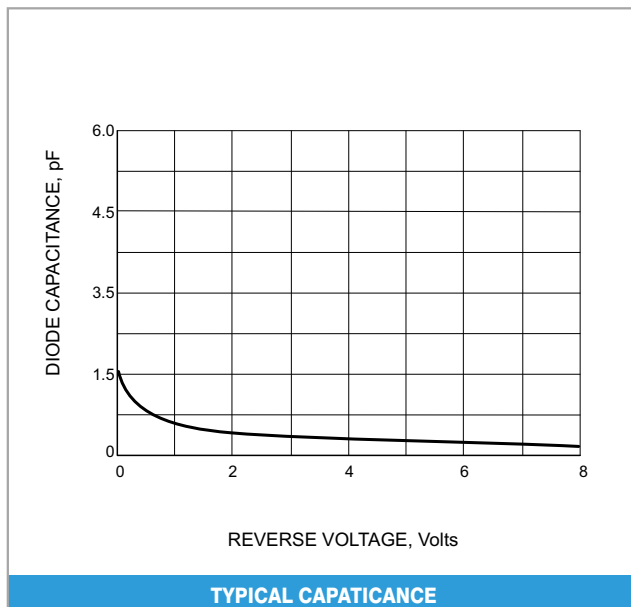
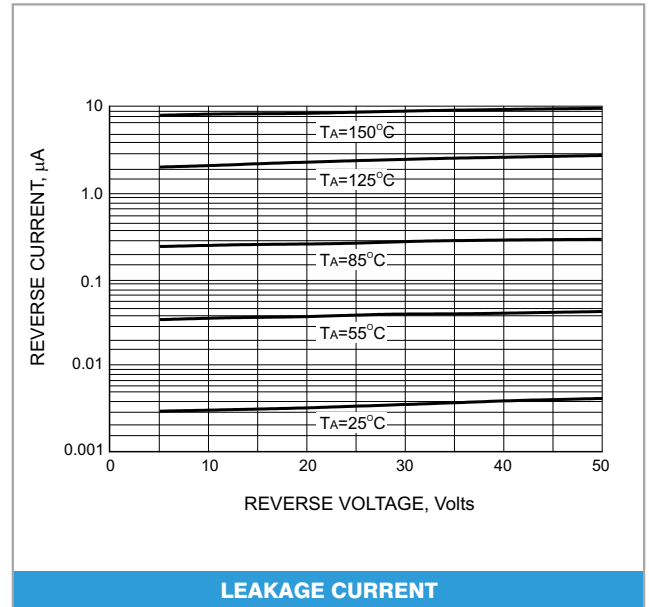
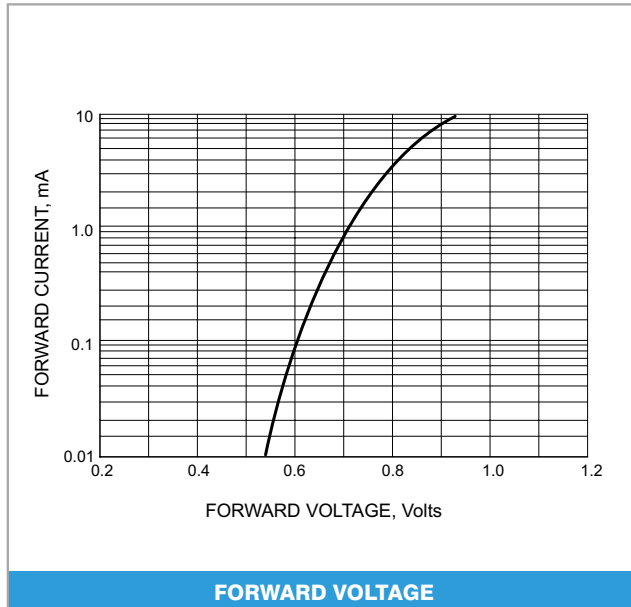
NOTE:

1. C_J at V_R=0, f=1MHZ

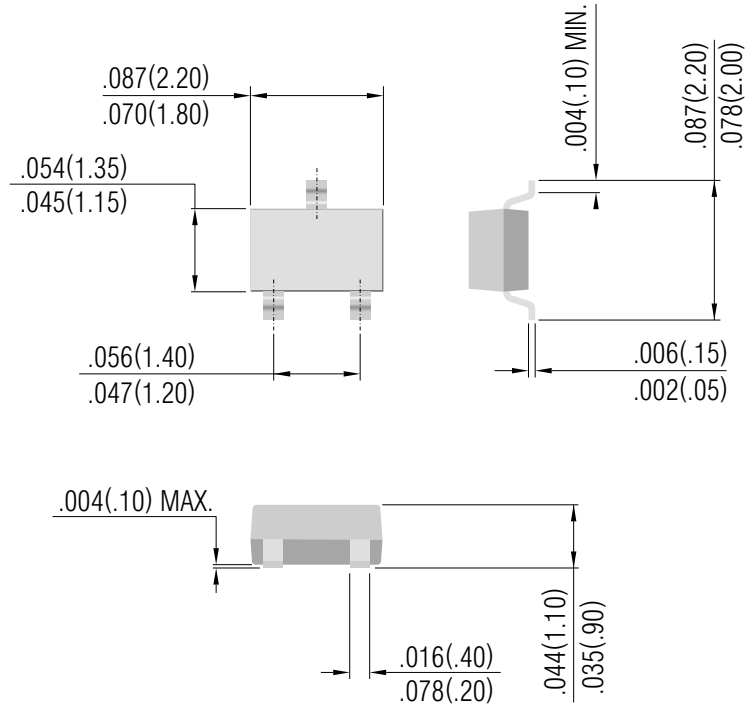
2.From I_F=10mA to I_R=1mA, V_R=6Volts, R_L=100Ω



MMBD4148W, MMBD4448W



SOT-323



Dimensions in inches and (millimeters)

© Copyright Panjit International Inc. 2001

All rights are reserved. Reproduction in whole or in part is prohibited without the prior written consent of the copyright owner.

The information presented in this document does not form part of any quotation or contract, is believed to be accurate and reliable and may be changed without notice. No liability will be accepted by the publisher for any consequence of its use.

Publication thereof does not convey nor imply any license under patent or other industrial or intellectual property rights.

PanJit International Inc.

TEL:886-7-6213121 Fax:886-7-6213129 Internet: <http://www.panjit.com.tw> email: sales@panjit.com.tw