



GBPC 15, 25, 35 SERIES

High Current 15, 25, 35 AMPS. Single Phase Glass Passivated Bridge Rectifiers

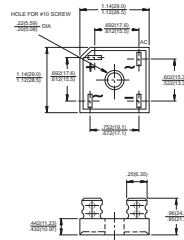


Voltage Range
50 to 1000 Volts
Current
15.0/25.0/35.0 Amperes

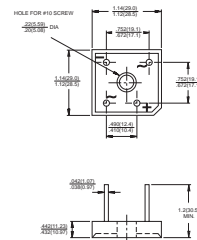
Features

- ✧ UL Recognized file # E-96005
- ✧ The plastic material used carries Underwriters Laboratory Flammability Recognition 94V-0
- ✧ Integrally molded heatsink provide very low thermal resistance for maximum heat dissipation
- ✧ Surge overload ratings from 300 amperes to 400 amperes
- ✧ Terminals solderable per MIL-STD-202, Method 208 (For wire type)
- ✧ Typical I_R less than 0.2 uA
- ✧ High temperature soldering guaranteed: 260°C / 10 seconds / .375", (9.5mm) lead lengths (For wire type)
- ✧ Isolated voltage from case to lead over 2500 volts

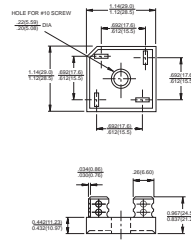
GBPC



GBPC-W



GBPC-M



Dimensions in inches and (millimeters)

Maximum Ratings and Electrical Characteristics

Rating at 25°C ambient temperature unless otherwise specified.

Single phase, half wave, 60 Hz, resistive or inductive load.

For capacitive load, derate current by 20%

| Type Number | Symbol | -005 | -01 | -02 | -04 | -06 | -08 | -10 | Units |
|--|-----------------|------|-----|-----|-----|------------------------|-----|------|-------|
| Maximum Recurrent Peak Reverse Voltage | V_{RRM} | 50 | 100 | 200 | 400 | 600 | 800 | 1000 | V |
| Maximum RMS Voltage | V_{RMS} | 35 | 70 | 140 | 280 | 420 | 560 | 700 | V |
| Maximum DC Blocking Voltage | V_{DC} | 50 | 100 | 200 | 400 | 600 | 800 | 1000 | V |
| Maximum Average Forward Rectified Current @ $T_C = 55^\circ\text{C}$ | $I_{(AV)}$ | | | | | 15.0 | | | A |
| Peak Forward Surge Current, Single Sine-wave Superimposed on Rated Load (JEDEC method) | I_{FSM} | | | | | 300 | | | A |
| Maximum Instantaneous Forward Voltage Drop Per Element at Specified Current | V_F | | | | | 7.5A 12.5A 17.5A | 1.1 | | V |
| Maximum DC Reverse Current at Rated DC Blocking Voltage Per Element | I_R | | | | | 5 | | | uA |
| Typical Thermal Resistance (Note 1) | $R_{\theta JC}$ | | | | | 1.5 | | | °C/W |
| Operating and Storage Temperature Range | T_J, T_{STG} | | | | | -50 to +150 | | | °C |

Notes: 1. Thermal Resistance from Junction to Case.

2. Suffix "W" - Wire Lead Structure/"M" - Terminal Location Face to Face.



GBPC15005 GBPC1510
 RATINGS AND CHARACTERISTIC CURVES (GBPC25005 THRU GBPC2510)
 GBPC35005 GBPC3510

