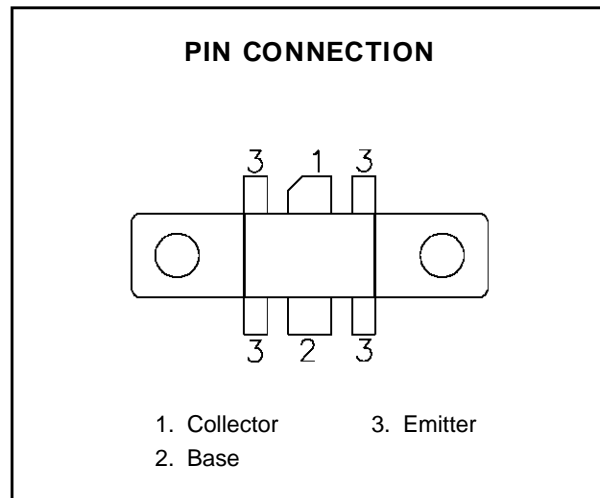
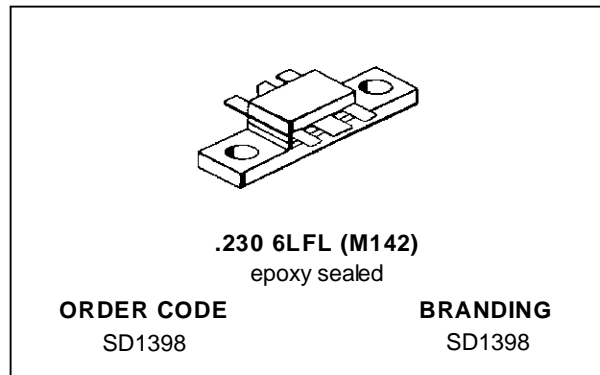


**RF & MICROWAVE TRANSISTORS
850-960 MHz APPLICATIONS**

- 850 - 960 MHZ
- 24 VOLTS
- COMMON EMITTER
- OVERLAY GEOMETRY
- GOLD METALLIZATION
- P_{OUT} = 6.0 W MIN. WITH 10.0 dB GAIN


DESCRIPTION

The SD1398 is a gold metallized epitaxial silicon NPN transistor designed for high linearity Class AB operation cellular base station applications. The SD1398 can also be operated Class C.

The SD1398 is internally input matched and can be used as a driver for the SD1423 or SD1424.

ABSOLUTE MAXIMUM RATINGS (T_{case} = 25°C)

Symbol	Parameter	Value	Unit
V _{CB0}	Collector-Base Voltage	50	V
V _{CES}	Collector-Emitter Voltage	35	V
V _{EBO}	Emitter-Base Voltage	3.5	V
I _C	Device Current	2.4	A
P _{DISS}	Power Dissipation	53	W
T _J	Junction Temperature	+200	°C
T _{STG}	Storage Temperature	- 65 to +150	°C

THERMAL DATA

R _{TH(j-c)}	Junction-Case Thermal Resistance	3.3	°C/W
----------------------	----------------------------------	-----	------

SD1398

ELECTRICAL SPECIFICATIONS (T_{case} = 25°C)

STATIC

Symbol	Test Conditions		Value			Unit
			Min.	Typ.	Max.	
BV _{CBO}	I _C = 5mA	I _E = 0mA	50	—	—	V
BV _{CEO}	I _C = 5mA	I _B = 0mA	24	—	—	V
BV _{EBO}	I _E = 5mA	I _C = 0mA	3.5	—	—	V
I _{CEO}	V _{CE} = 24V	I _E = 0mA	—	—	1.0	mA
I _{CBO}	V _{CB} = 24V	I _E = 0mA	—	—	1.0	mA
h _{FE}	V _{CE} = 10V	I _C = 0.1A	20	—	100	—

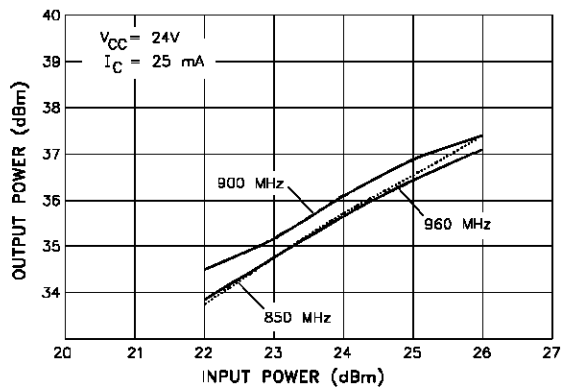
DYNAMIC

Symbol	Test Conditions			Value			Unit
				Min.	Typ.	Max.	
P _{OUT}	f = 850 — 960 MHz	V _{CE} = 24 V	I _{CQ} = 25 mA	6	—	—	W
η _C	f = 850 — 960 MHz	V _{CE} = 24 V	I _{CQ} = 25 mA	—	50	—	%
G _P	f = 850 — 960 MHz	V _{CE} = 24 V	I _{CQ} = 25 mA	10	12	—	dB
C _{OB}	f = 1 MHz	V _{CB} = 24 V		—	7.5	8.5	pF

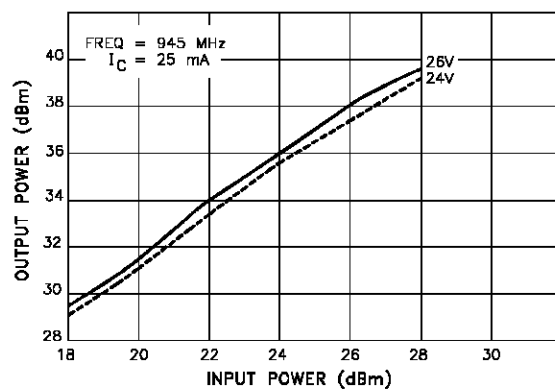
Note: P_{IN} = 0.60w

TYPICAL PERFORMANCE

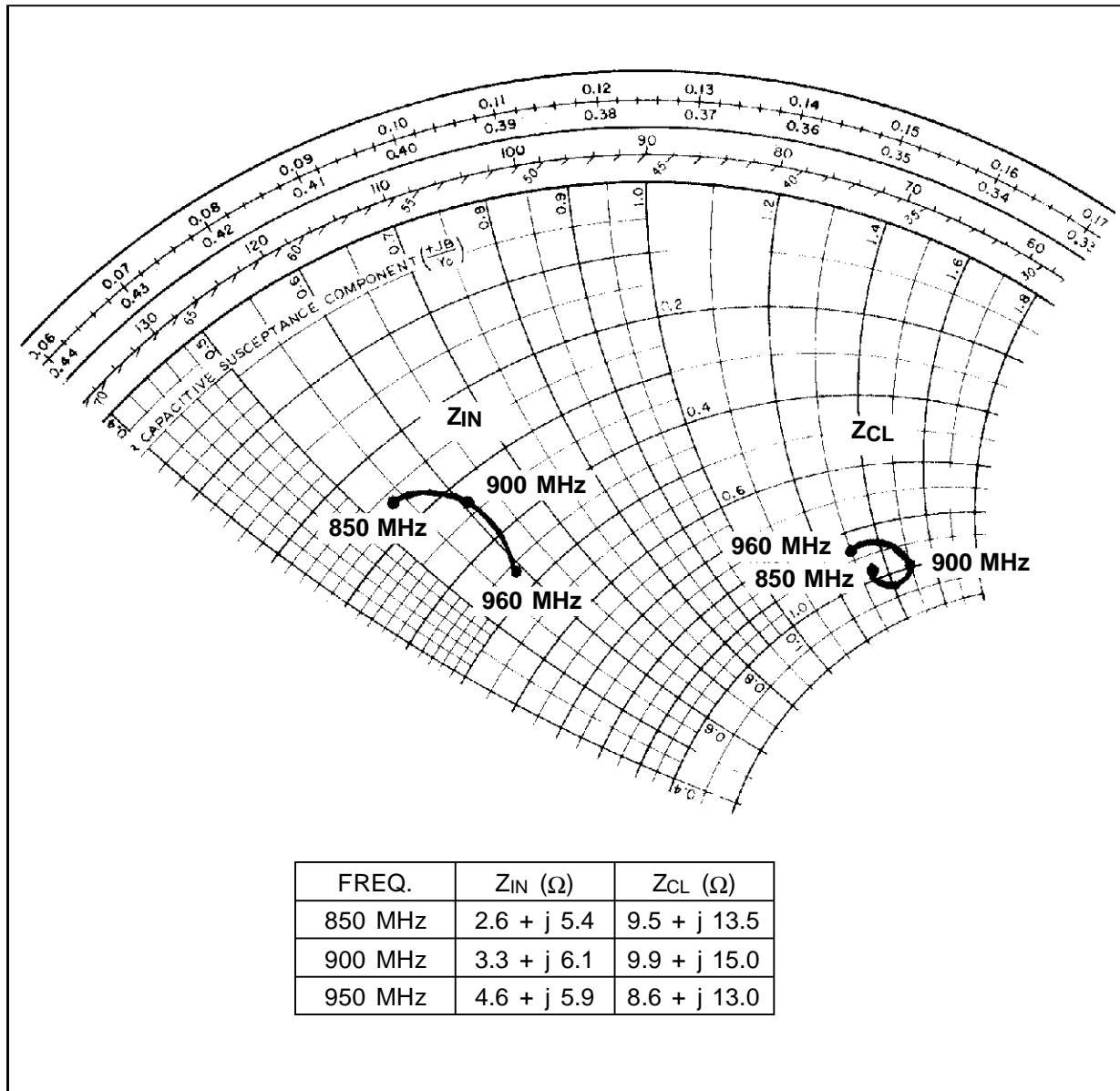
CLASS AB BROADBAND OUTPUT POWER vs INPUT POWER



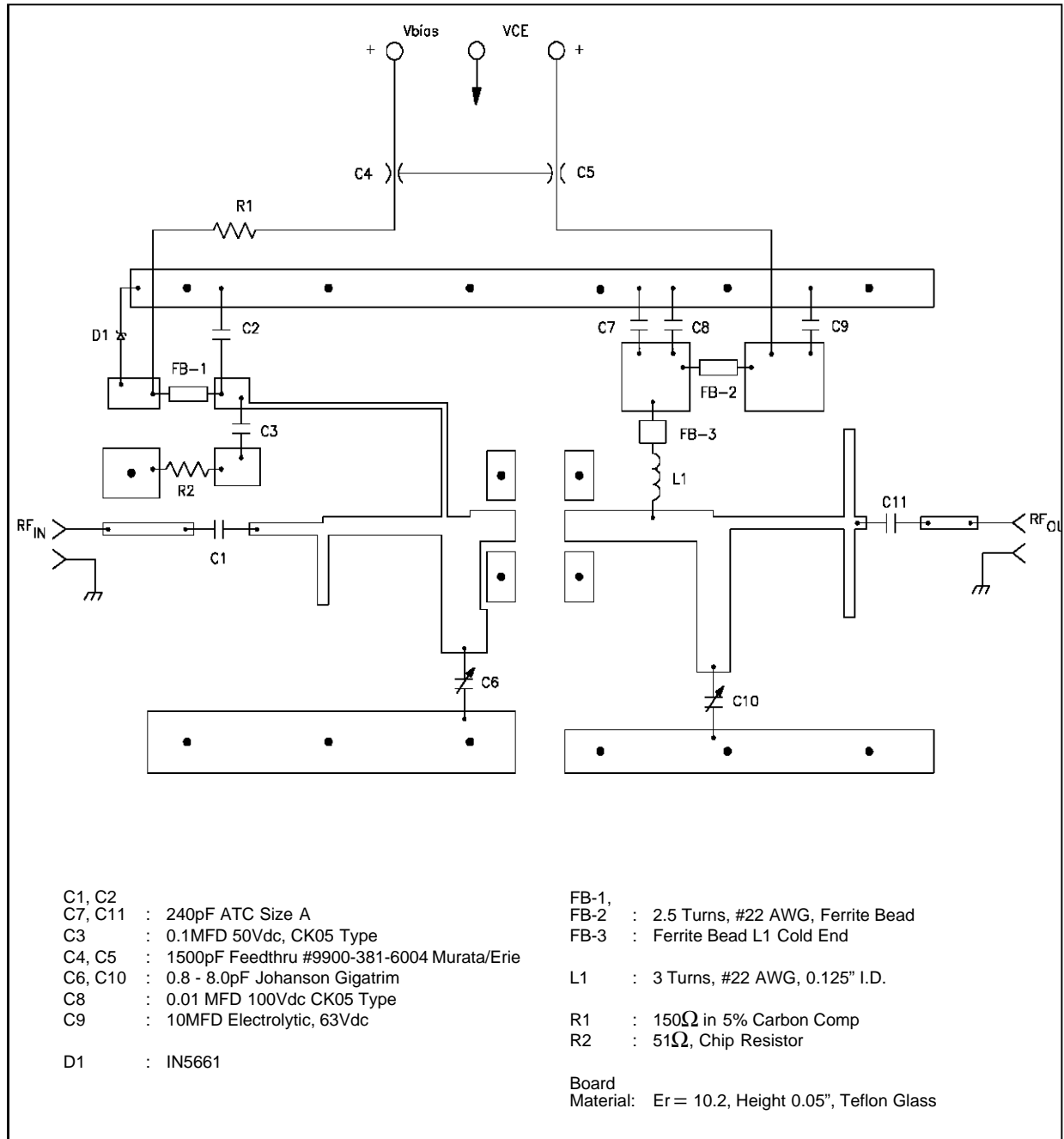
OUTPUT POWER vs INPUT POWER



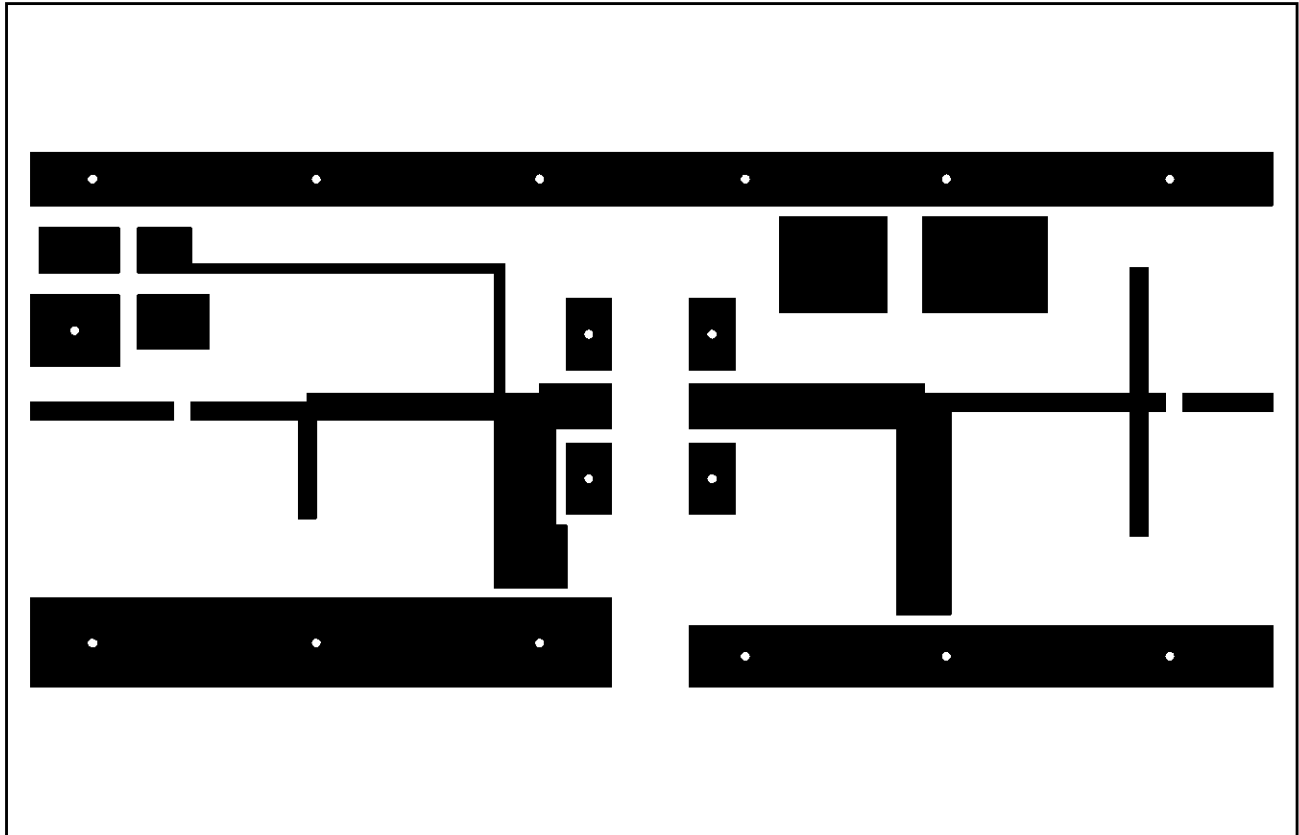
IMPEDANCE DATA



TEST CIRCUIT

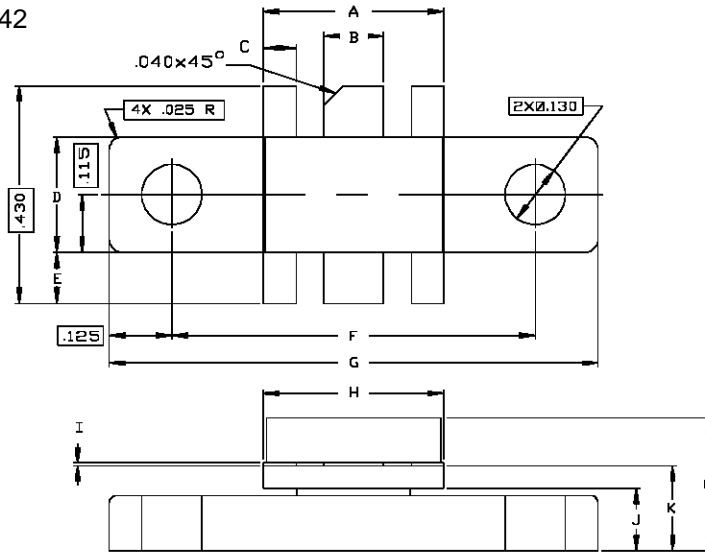


TEST CIRCUIT LAYOUT



PACKAGE MECHANICAL DATA

Ref.: Dwg. No.12-0142



SGS-THOMSON MICROELECTRONICS			CONT'D		
	MINIMUM Inches/mm	MAXIMUM Inches/mm		MINIMUM Inches/mm	MAXIMUM Inches/mm
A	.355/9,02	.365/9,27	K	.160/4,06	.180/4,57
B	.115/2,92	.125/3,18	L	.230/5,84	.260/6,60
C	.075/1,91	.085/2,16			
D	.225/5,72	.235/5,97			
E	.090/2,29	.110/2,79			
F	.720/18,29	.730/18,54			
G	.970/24,64	.980/24,89			
H	.355/9,02	.365/9,27			
I	.004/0,10	.006/0,15			
J	.120/3,05	.130/3,30			

Information furnished is believed to be accurate and reliable. However, SGS-THOMSON Microelectronics assumes no responsibility for the consequences of use of such information nor for any infringement of patents or other rights of third parties which may results from its use. No license is granted by implication or otherwise under any patent or patent rights of SGS-THOMSON Microelectronics. Specifications mentioned in this publication are subject to change without notice. This publication supersedes and replaces all information previously supplied. SGS-THOMSON Microelectronics products are not authorized for use as critical components in life support devices or systems without express written approval of SGS-THOMSON Microelectronics.

© 1994 SGS-THOMSON Microelectronics - All Rights Reserved

SGS-THOMSON Microelectronics GROUP OF COMPANIES
 Australia - Brazil - France - Germany - Hong Kong - Italy - Japan - Korea - Malaysia - Malta - Morocco - The Netherlands -
 Singapore - Spain - Sweden - Switzerland - Taiwan - Thailand - United Kingdom - U.S.A