

ISO HIGH SIDE SMART POWER SOLID STATE RELAY

PRELIMINARY DATA

| TYPE | V _{DSS} | R _{DS(on)} | I _n (*) | V _{CC} |
|-------|------------------|---------------------|--------------------|-----------------|
| VN16B | 40 V | 0.06 Ω | 5.6 A | 26 V |

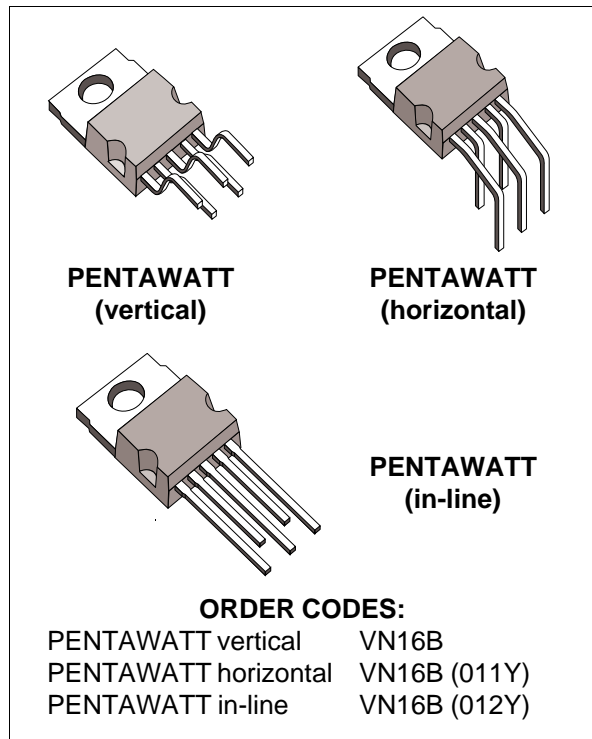
- MAXIMUM CONTINUOUS OUTPUT CURRENT (#): 20 A @ T_c = 85°C
- 5V LOGIC LEVEL COMPATIBLE INPUT
- THERMAL SHUT-DOWN
- UNDER VOLTAGE PROTECTION
- OPEN DRAIN DIAGNOSTIC OUTPUT
- INDUCTIVE LOAD FAST DEMAGNETIZATION
- VERY LOW STAND-BY POWER DISSIPATION

DESCRIPTION

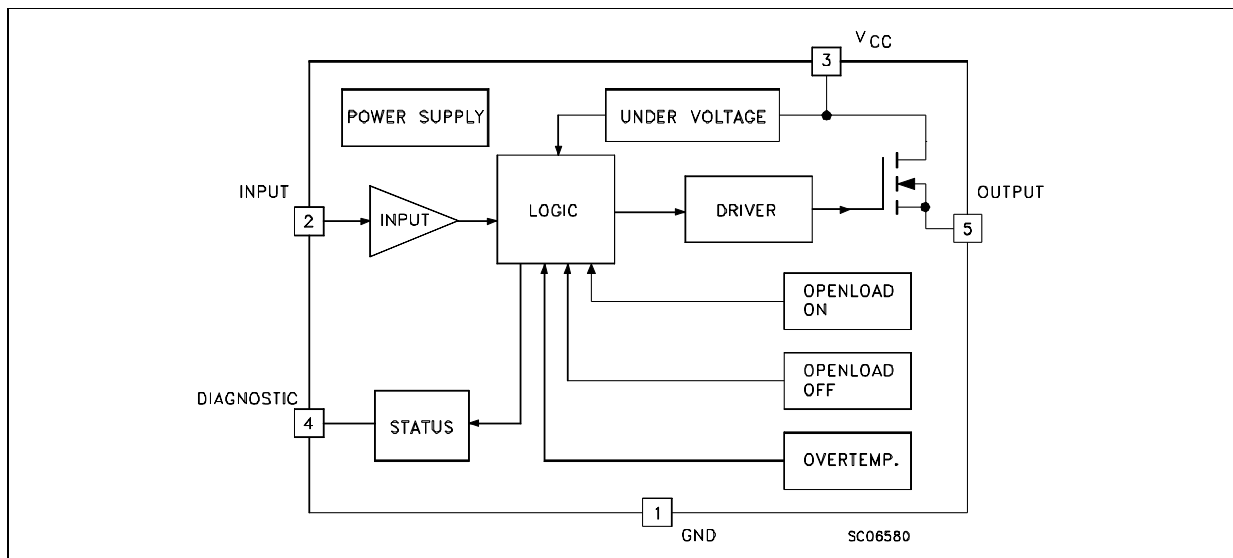
The VN16B is a monolithic device made using SGS-THOMSON Vertical Intelligent Power Technology, intended for driving resistive or inductive loads with one side grounded.

Built-in thermal shut-down protects the chip from over temperature and short circuit.

The open drain diagnostic output indicates: open load in off state and in on state, output shorted to V_{CC} and overtemperature. Fast demagnetization of inductive loads is achieved by negative (-18V) load voltage at turn-off.



BLOCK DIAGRAM



(*) I_n = Nominal current according to ISO definition for high side automotive switch (see note 1)

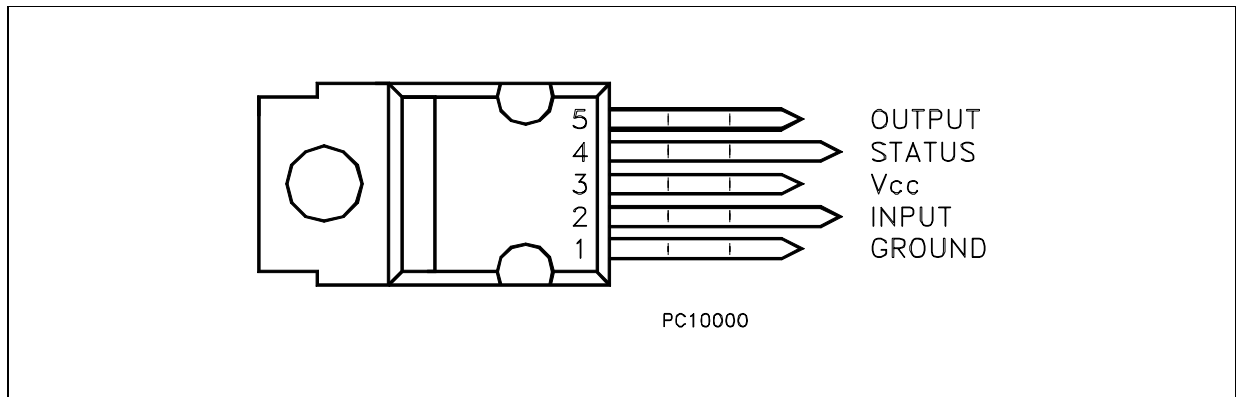
(#) The maximum continuous output current is the current at T_c = 85 °C for a battery voltage of 13 V which does not activate self protection

VN16B

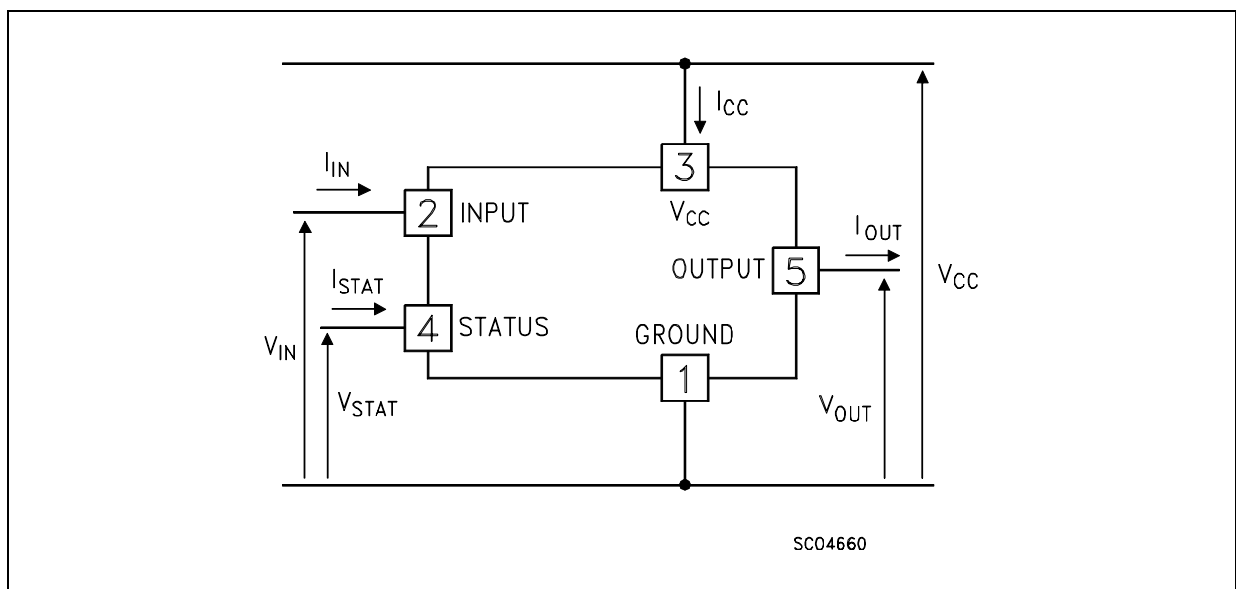
ABSOLUTE MAXIMUM RATING

| Symbol | Parameter | Value | Unit |
|----------------|--|------------|------------------|
| $V_{(BR)DSS}$ | Drain-Source Breakdown Voltage | 40 | V |
| I_{OUT} | Output Current (cont.) at $T_c = 85\text{ }^\circ\text{C}$ | 20 | A |
| $I_{OUT(RMS)}$ | RMS Output Current at $T_c = 85\text{ }^\circ\text{C}$ | 20 | A |
| I_R | Reverse Output Current at $T_c = 85\text{ }^\circ\text{C}$ ($f > 1\text{ Hz}$) | -20 | A |
| I_{IN} | Input Current | ± 10 | mA |
| $-V_{CC}$ | Reverse Supply Voltage | -4 | V |
| I_{STAT} | Status Current | ± 10 | mA |
| V_{ESD} | Electrostatic Discharge (1.5 k Ω , 100 pF) | 2000 | V |
| P_{tot} | Power Dissipation at $T_c = 25\text{ }^\circ\text{C}$ | 82 | W |
| T_j | Junction Operating Temperature | -40 to 150 | $^\circ\text{C}$ |
| T_{stg} | Storage Temperature | -55 to 150 | $^\circ\text{C}$ |

CONNECTION DIAGRAM



CURRENT AND VOLTAGE CONVENTIONS



THERMAL DATA

| | | | | |
|-----------------------|-------------------------------------|-----|-----|------|
| R _{thj-case} | Thermal Resistance Junction-case | Max | 1.5 | °C/W |
| R _{thj-amb} | Thermal Resistance Junction-ambient | Max | 60 | °C/W |

ELECTRICAL CHARACTERISTICS (8 < V_{CC} < 16 V; -40 ≤ T_j ≤ 125 °C unless otherwise specified)

POWER

| Symbol | Parameter | Test Conditions | Min. | Typ. | Max. | Unit |
|----------------------|----------------------------------|---|-------|------|------|------|
| V _{CC} | Supply Voltage | | 6 | 13 | 26 | V |
| I _n (*) | Nominal Current | T _c = 85 °C V _{DS(on)} ≤ 0.5 V _{CC} = 13 V | 5.6 | | 8.8 | A |
| R _{on} | On State Resistance | I _{OUT} = I _n V _{CC} = 13 V T _j = 25 °C | 0.038 | | 0.06 | Ω |
| I _s | Supply Current | Off State V _{CC} = 13 V T _j ≥ 25 °C | | 25 | 50 | μA |
| V _{DS(MAX)} | Maximum Voltage Drop | I _{OUT} = 20 A V _{CC} = 13 V T _c = 85 °C | 1 | | 1.8 | V |
| R _i | Output to GND Internal Impedance | T _j = 25 °C | 5 | 10 | 20 | KΩ |

SWITCHING

| Symbol | Parameter | Test Conditions | Min. | Typ. | Max. | Unit |
|-------------------------|---------------------------------------|--|-------|------|------|------|
| t _{d(on)} (^) | Turn-on Delay Time Of Output Current | R _{load} = 1.6 Ω | 5 | 50 | 500 | μs |
| t _r (^) | Rise Time Of Output Current | R _{load} = 1.6 Ω | 40 | 100 | 680 | μs |
| t _{d(off)} (^) | Turn-off Delay Time Of Output Current | R _{load} = 1.6 Ω | 10 | 100 | 500 | μs |
| t _f (^) | Fall Time Of Output Current | R _{load} = 1.6 Ω | 40 | 100 | 680 | μs |
| (di/dt) _{on} | Turn-on Current Slope | R _{load} = 1.6 Ω V _{CC} = 13 V | 0.008 | | 0.1 | A/μs |
| (di/dt) _{off} | Turn-off Current Slope | R _{load} = 1.6 Ω V _{CC} = 13 V | 0.008 | | 0.1 | A/μs |
| V _{demag} | Inductive Load Clamp Voltage | R _{load} = 1.6 Ω L = 1 mH | -24 | -18 | -14 | V |

LOGIC INPUT

| Symbol | Parameter | Test Conditions | Min. | Typ. | Max. | Unit |
|-----------------------|--------------------------|---|------|-----------|------|--------|
| V _{IL} | Input Low Level Voltage | | | | 1.5 | V |
| V _{IH} | Input High Level Voltage | | 3.5 | | (•) | V |
| V _{I(hyst.)} | Input Hysteresis Voltage | | 0.2 | 1 | 1.5 | V |
| I _{IN} | Input Current | V _{IN} = 5 V T _j = 25 °C | | | 100 | μA |
| V _{ICL} | Input Clamp Voltage | I _{IN} = 10 mA I _{IN} = -10 mA | 5 | 6 -0.7 | 7 | V V |

ELECTRICAL CHARACTERISTICS (continued)
PROTECTION AND DIAGNOSTICS (continued)

| Symbol | Parameter | Test Conditions | Min. | Typ. | Max. | Unit |
|------------------------|-------------------------------|---|------|-----------|------|--------|
| V _{STAT} | Status Voltage Output Low | I _{STAT} = 1.6 mA | | | 0.4 | V |
| V _{USD} | Under Voltage Shut Down | | 3.5 | 5 | 6 | V |
| V _{SCL} | Status Clamp Voltage | I _{STAT} = 10 mA I _{STAT} = -10 mA | 5 | 6 -0.7 | 7 | V V |
| T _{TSD} | Thermal Shut-down Temperature | | 140 | 160 | 180 | °C |
| T _{SD(hyst.)} | Thermal Shut-down Hysteresis | | | 15 | 50 | °C |
| T _R | Reset Temperature | | 125 | | | °C |
| V _{OL} | Open Voltage Level | Off-State (note 2) | 2.5 | 3.8 | 5 | V |
| I _{OL} | Open Load Current Level | On-State | 0.15 | | 0.85 | A |
| t _{povl} | Status Delay | (note 3) | | 5 | 10 | µs |
| t _{pol} | Status Delay | (note 3) | 50 | 400 | 2500 | µs |

(*) I_n= Nominal current according to ISO definition for high side automotive switch (see note 1)

(^) See Switching Time Waveforms

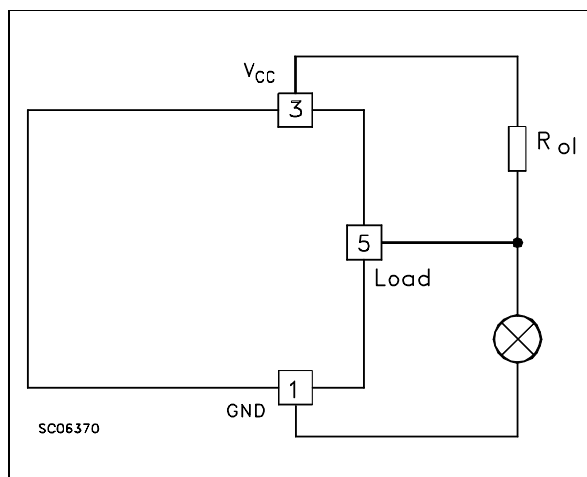
(●) The V_{IH} is internally clamped at 6V about. It is possible to connect this pin to an higher voltage via an external resistor calculated to not exceed 10 mA at the input pin.

note 1: The Nominal Current is the current at T_c = 85 °C for battery voltage of 13V which produces a voltage drop of 0.5 V

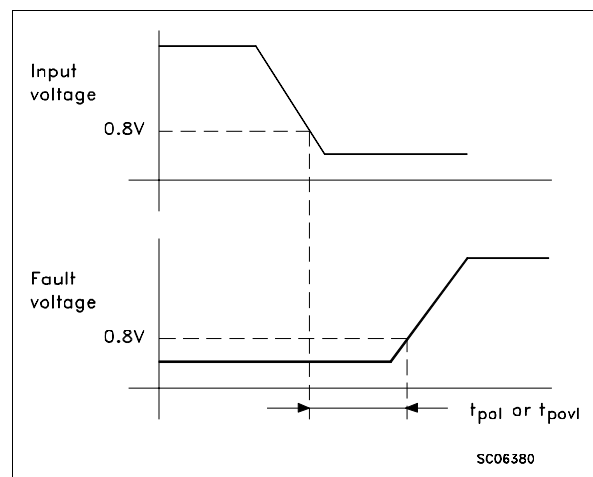
note 2: I_{OL(off)} = (V_{CC} - V_{OL})/R_{OL} (see figure)

note 3: t_{povl} t_{pol}: ISO definition (see figure)

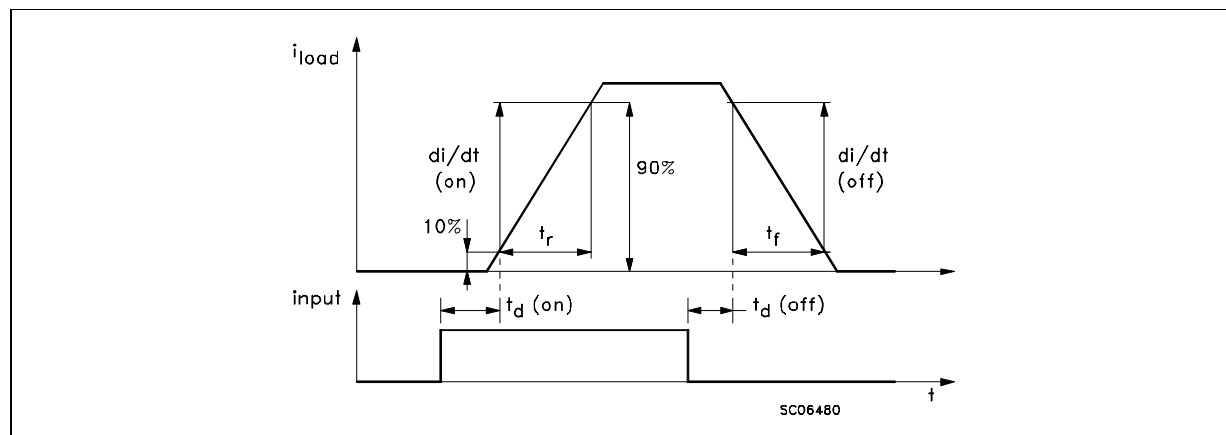
Note 2 Relevant Figure



Note 3 Relevant Figure



Switching Time Waveforms

**FUNCTIONAL DESCRIPTION**

The device has a diagnostic output which indicates open load in on-state, open load in off-state, over temperature conditions and stuck-on to V_{CC} .

From the falling edge of the input signal, the status output, initially low to signal a fault condition (overtemperature or open load on-state), will go back to a high state with a different delay in case of overtemperature ($tpovl$) and in case of open load ($tpol$) respectively. This feature allows to discriminate the nature of the detected fault. To protect the device against short circuit and over current condition, the thermal protection turns the integrated Power MOS off at a minimum junction temperature of $140\text{ }^{\circ}\text{C}$. When this temperature returns to $125\text{ }^{\circ}\text{C}$ the switch is automatically turned on again. In short circuit the protection reacts with virtually no delay, the sensor being located inside the Power MOS area. An internal function of the devices ensures the fast demagnetization of inductive loads with a typical voltage (V_{demag}) of -18V . This function allows to greatly reduce the power dissipation according to the formula:

$$P_{dem} = 0.5 \cdot L_{load} \cdot (I_{load})^2 \cdot [(V_{CC} + V_{demag}) / V_{demag}] \cdot f$$

where f = switching frequency and

V_{demag} = demagnetization voltage.

The maximum inductance which causes the chip

temperature to reach the shut-down temperature in a specified thermal environment is a function of the load current for a fixed V_{CC} , V_{demag} and f according to the above formula. In this device if the GND pin is disconnected, with V_{CC} not exceeding 16V , it will switch off.

PROTECTING THE DEVICE AGAINST REVERSE BATTERY

The simplest way to protect the device against a continuous reverse battery voltage (-26V) is to insert a Schottky diode between pin 1 (GND) and ground, as shown in the typical application circuit (fig.3).

The consequences of the voltage drop across this diode are as follows:

- If the input is pulled to power GND, a negative voltage of $-V_f$ is seen by the device. (V_{il} , V_{ih} thresholds and V_{stat} are increased by V_f with respect to power GND).
- The undervoltage shutdown level is increased by V_f .

If there is no need for the control unit to handle external analog signals referred to the power GND, the best approach is to connect the reference potential of the control unit to node [1] (see application circuit in fig. 3), which becomes the common signal GND for the whole control board avoiding shift of V_{ih} , V_{il} and V_{stat} . This solution allows the use of a standard diode.

TRUTH TABLE

| | INPUT | OUTPUT | DIAGNOSTIC |
|-------------------------------|-------|--------|------------|
| Normal Operation | L | L | H |
| | H | H | H |
| Over-temperature | X | L | L |
| Under-voltage | X | L | H |
| Short load to V _{CC} | H | H | L |
| | L | H | L |
| Open Load | H | H | L |
| | L | L | L (#) |

(#) With an additional external resistor

Figure 1: Waveforms

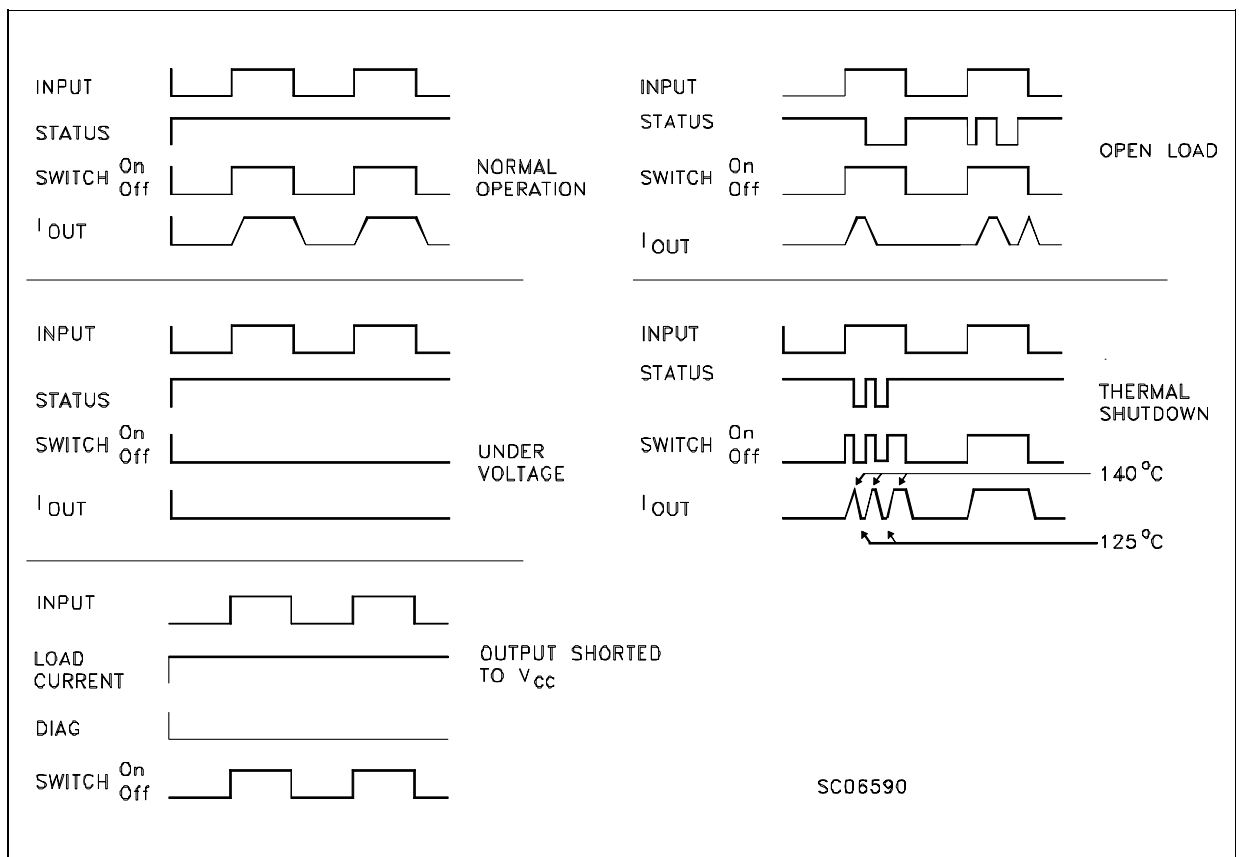


Figure 2: Over Current Test Circuit

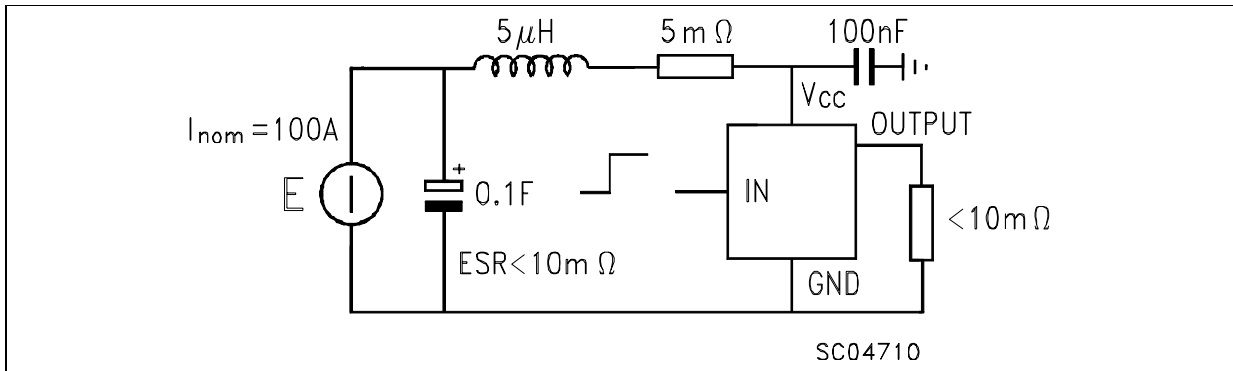


Figure 3: Typical Application Circuit With A Schottky Diode For Reverse Supply Protection

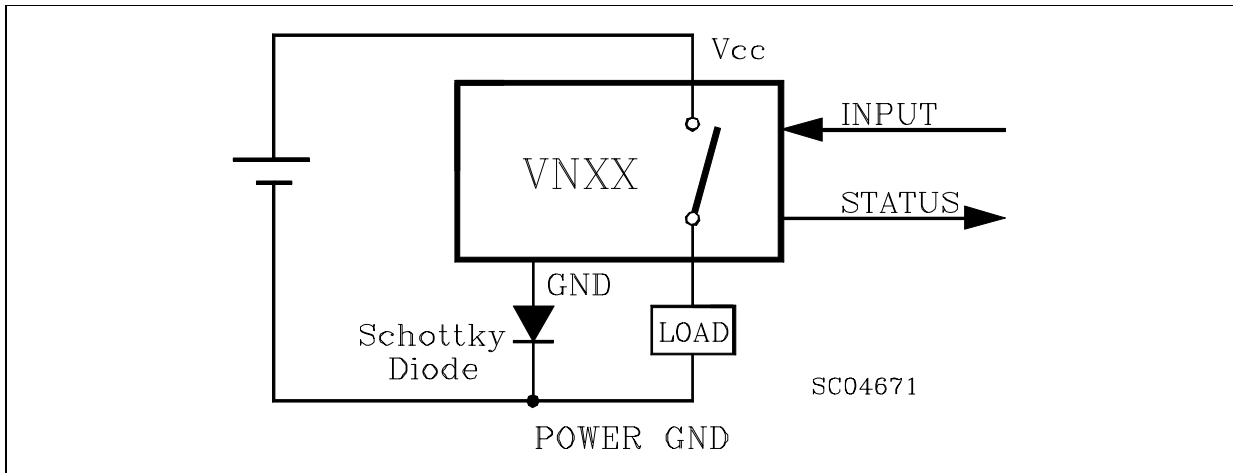
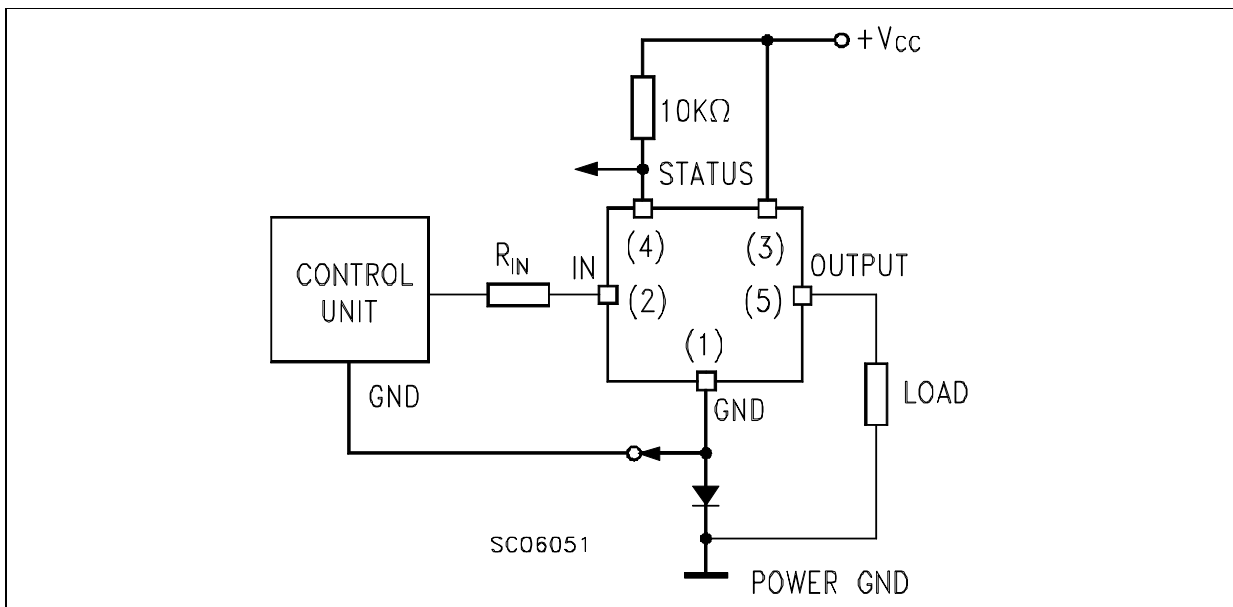
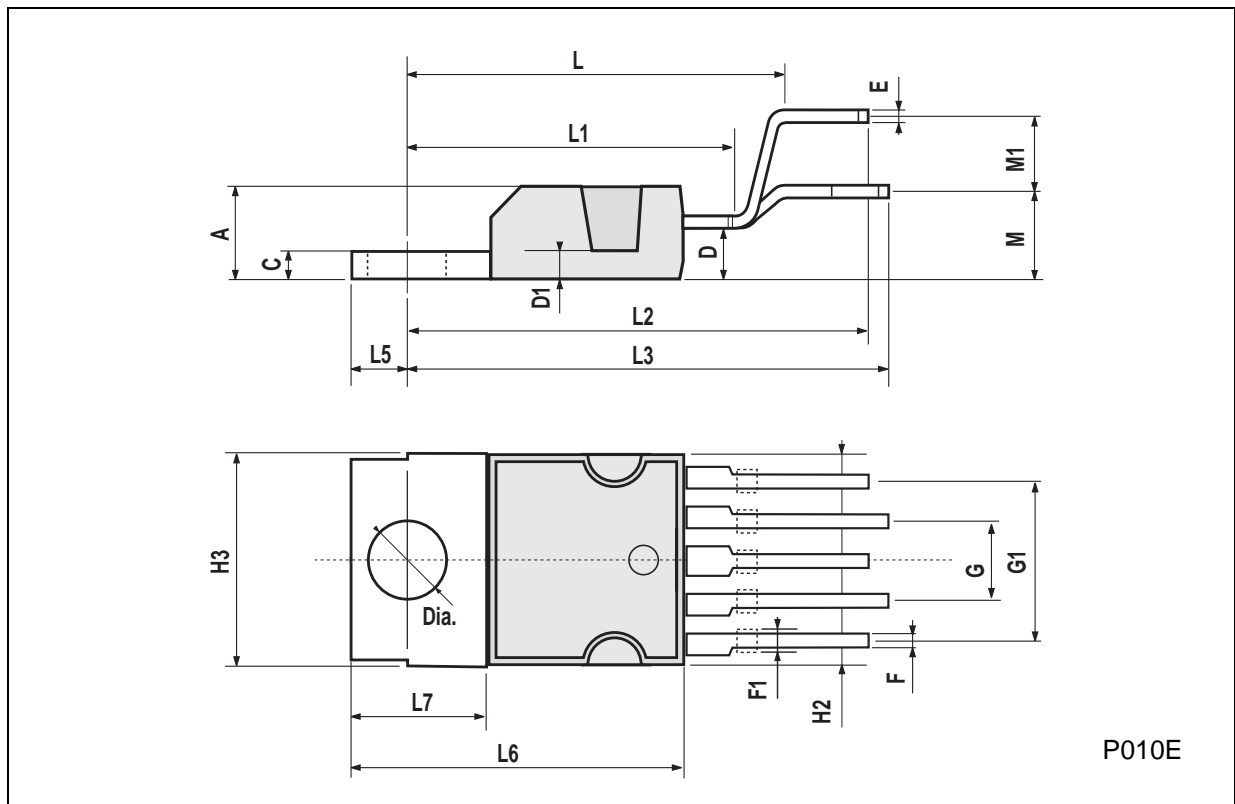


Figure 4: Typical Application Circuit With Separate Signal Ground



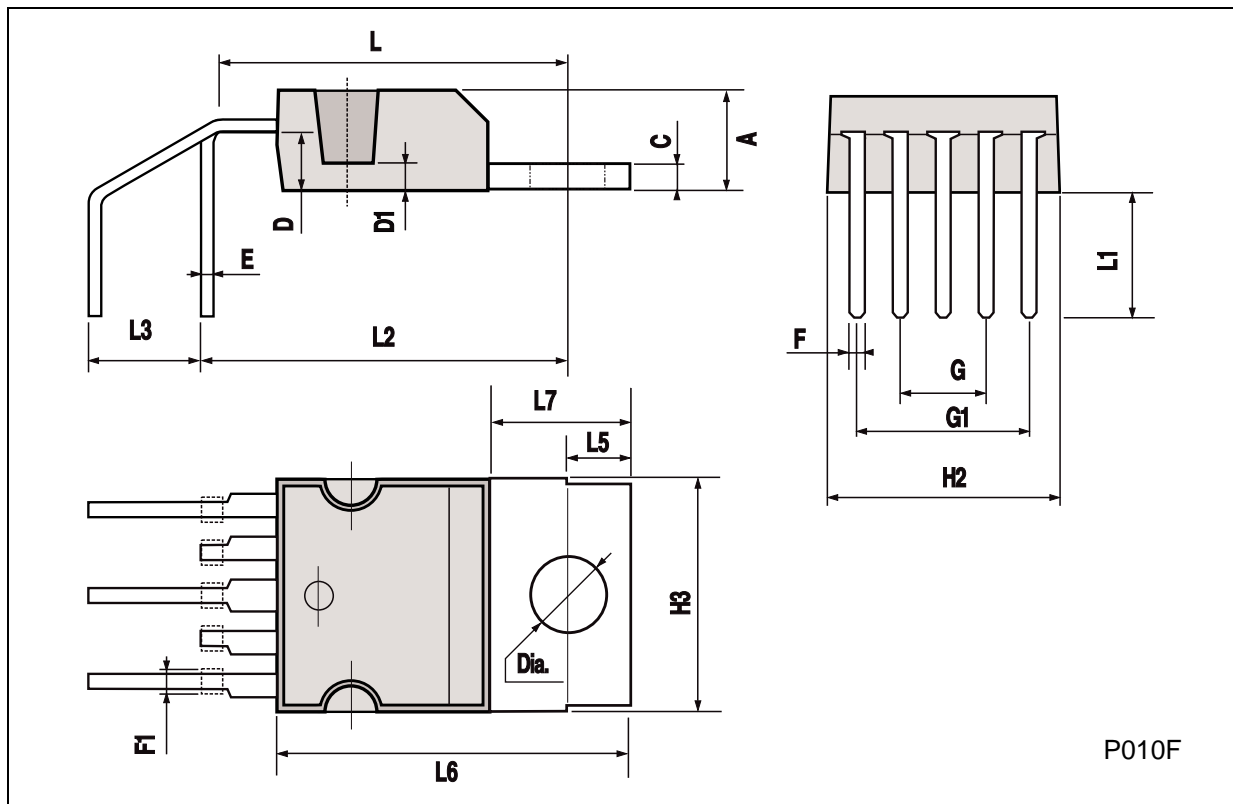
Pentawatt (vertical) MECHANICAL DATA

| DIM. | mm | | | inch | | |
|------|-------|-------|------|-------|-------|-------|
| | MIN. | TYP. | MAX. | MIN. | TYP. | MAX. |
| A | | | 4.8 | | | 0.189 |
| C | | | 1.37 | | | 0.054 |
| D | 2.4 | | 2.8 | 0.094 | | 0.110 |
| D1 | 1.2 | | 1.35 | 0.047 | | 0.053 |
| E | 0.35 | | 0.55 | 0.014 | | 0.022 |
| F | 0.8 | | 1.05 | 0.031 | | 0.041 |
| F1 | 1 | | 1.4 | 0.039 | | 0.055 |
| G | 3.2 | 3.4 | 3.6 | 0.126 | 0.134 | 0.142 |
| G1 | 6.6 | 6.8 | 7 | 0.260 | 0.268 | 0.276 |
| H2 | | | 10.4 | | | 0.409 |
| H3 | 10.05 | | 10.4 | 0.396 | | 0.409 |
| L | | 17.85 | | | 0.703 | |
| L1 | | 15.75 | | | 0.620 | |
| L2 | | 21.4 | | | 0.843 | |
| L3 | | 22.5 | | | 0.886 | |
| L5 | 2.6 | | 3 | 0.102 | | 0.118 |
| L6 | 15.1 | | 15.8 | 0.594 | | 0.622 |
| L7 | 6 | | 6.6 | 0.236 | | 0.260 |
| M | | 4.5 | | | 0.177 | |
| M1 | | 4 | | | 0.157 | |
| Dia | 3.65 | | 3.85 | 0.144 | | 0.152 |



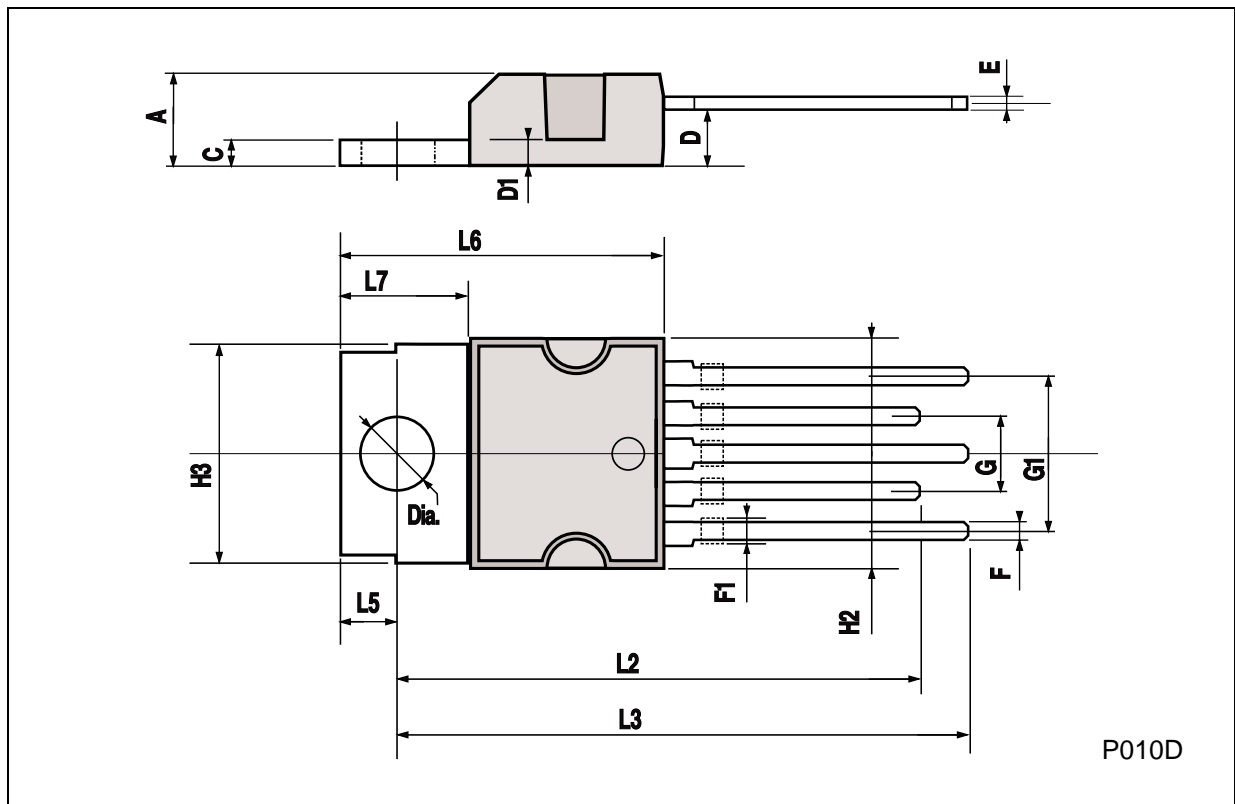
Pentawatt (horizontal) MECHANICAL DATA

| DIM. | mm | | | inch | | |
|------|-------|------|------|-------|-------|-------|
| | MIN. | TYP. | MAX. | MIN. | TYP. | MAX. |
| A | | | 4.8 | | | 0.189 |
| C | | | 1.37 | | | 0.054 |
| D | 2.4 | | 2.8 | 0.094 | | 0.110 |
| D1 | 1.2 | | 1.35 | 0.047 | | 0.053 |
| E | 0.35 | | 0.55 | 0.014 | | 0.022 |
| F | 0.8 | | 1.05 | 0.031 | | 0.041 |
| F1 | 1 | | 1.4 | 0.039 | | 0.055 |
| G | 3.2 | 3.4 | 3.6 | 0.126 | 0.134 | 0.142 |
| G1 | 6.6 | 6.8 | 7 | 0.260 | 0.268 | 0.276 |
| H2 | | | 10.4 | | | 0.409 |
| H3 | 10.05 | | 10.4 | 0.396 | | 0.409 |
| L | 14.2 | | 15 | 0.559 | | 0.590 |
| L1 | 5.7 | | 6.2 | | | 0.244 |
| L2 | 14.6 | | 15.2 | | | 0.598 |
| L3 | 3.5 | | 4.1 | 0.137 | | 0.161 |
| L5 | 2.6 | | 3 | 0.102 | | 0.118 |
| L6 | 15.1 | | 15.8 | 0.594 | | 0.622 |
| L7 | 6 | | 6.6 | 0.236 | | 0.260 |
| Dia | 3.65 | | 3.85 | 0.144 | | 0.152 |



Pentawatt (In- Line) MECHANICAL DATA

| DIM. | mm | | | inch | | |
|------|-------|-------|------|-------|-------|-------|
| | MIN. | TYP. | MAX. | MIN. | TYP. | MAX. |
| A | | | 4.8 | | | 0.189 |
| C | | | 1.37 | | | 0.054 |
| D | 2.4 | | 2.8 | 0.094 | | 0.110 |
| D1 | 1.2 | | 1.35 | 0.047 | | 0.053 |
| E | 0.35 | | 0.55 | 0.014 | | 0.022 |
| F | 0.8 | | 1.05 | 0.031 | | 0.041 |
| F1 | 1 | | 1.4 | 0.039 | | 0.055 |
| G | 3.2 | 3.4 | 3.6 | 0.126 | 0.134 | 0.142 |
| G1 | 6.6 | 6.8 | 7 | 0.260 | 0.268 | 0.276 |
| H2 | | | 10.4 | | | 0.409 |
| H3 | 10.05 | | 10.4 | 0.396 | | 0.409 |
| L2 | 23.05 | 23.4 | 23.8 | 0.907 | 0.921 | 0.937 |
| L3 | 25.3 | 25.65 | 26.1 | 0.996 | 1.010 | 1.028 |
| L5 | 2.6 | | 3 | 0.102 | | 0.118 |
| L6 | 15.1 | | 15.8 | 0.594 | | 0.622 |
| L7 | 6 | | 6.6 | 0.236 | | 0.260 |
| Dia | 3.65 | | 3.85 | 0.144 | | 0.152 |



Information furnished is believed to be accurate and reliable. However, SGS-THOMSON Microelectronics assumes no responsibility for the consequences of use of such information nor for any infringement of patents or other rights of third parties which may result from its use. No license is granted by implication or otherwise under any patent or patent rights of SGS-THOMSON Microelectronics. Specifications mentioned in this publication are subject to change without notice. This publication supersedes and replaces all information previously supplied. SGS-THOMSON Microelectronics products are not authorized for use as critical components in life support devices or systems without express written approval of SGS-THOMSON Microelectronics.

© 1994 SGS-THOMSON Microelectronics - All Rights Reserved

SGS-THOMSON Microelectronics GROUP OF COMPANIES

Australia - Brazil - France - Germany - Hong Kong - Italy - Japan - Korea - Malaysia - Malta - Morocco - The Netherlands -
Singapore - Spain - Sweden - Switzerland - Taiwan - Thailand - United Kingdom - U.S.A