

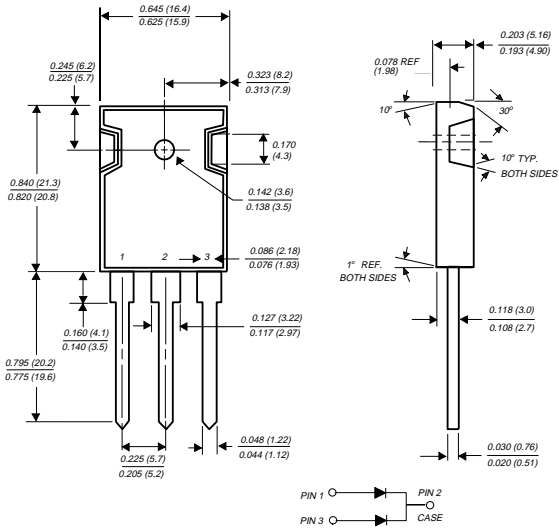
SBL4030PT THRU SBL4040PT

SCHOTTKY RECTIFIER

Reverse Voltage - 30 to 40 Volts

Forward Current - 40.0 Amperes

TO-247AD



Dimensions in inches and (millimeters)

FEATURES

- ◆ Plastic package has Underwriters Laboratory Flammability Classifications 94V-0
- ◆ Dual rectifier construction, positive center-tap
- ◆ Metal silicon rectifier, majority carrier conduction
- ◆ Low power loss, high efficiency
- ◆ High current capability, low forward voltage drop
- ◆ High surge capability
- ◆ For use in low voltage, high frequency inverters, free wheeling, and polarity protection applications
- ◆ Guardring for overvoltage protection
- ◆ High temperature soldering guaranteed: 250°C/10 seconds, 0.17" (4.3mm) from case



MECHANICAL DATA

Case: JEDEC TO-247AD molded plastic body

Terminals: Lead solderable per MIL-STD-750, Method 2026

Polarity: As marked

Mounting Position: Any

Mounting Torque: 10 in. - lbs. max.

Weight: 0.2 ounce, 5.6 grams

MAXIMUM RATINGS AND ELECTRICAL CHARACTERISTICS

Ratings at 25°C ambient temperature unless otherwise specified.

	SYMBOLS	SBL4030PT	SBL4040PT	UNITS
Maximum repetitive peak reverse voltage	V _{RRM}	30	40	Volts
Maximum working peak reverse voltage	V _{RMS}	21	28	Volts
Maximum DC blocking voltage	V _{DC}	30	40	Volts
Maximum average forward rectified current at T _C =100°C	I _(AV)	40.0		Amps
Peak repetitive forward current per leg at T _C =95°C (rated V _R square wave, 20 KHz)	I _{FRM}	40.0		Amps
Peak forward surge current, 8.3ms single half sine-wave superimposed on rated load (JEDEC Method)	I _{FSM}	400.0		Amps
Peak repetitive reverse surge current (NOTE 1)	I _{RSM}	2.0		Amps
Maximum instantaneous forward voltage per leg at I _F =20A, T _C =25°C (NOTE 2) I _F =20A, T _C =100°C	V _F	0.58 0.50		Volts
Maximum instantaneous reverse current at T _C =25°C rated DC blocking voltage per leg (NOTE 2) T _C =100°C	I _R	10.0 100.0		mA
Typical thermal resistance per leg (NOTE 3)	R _{θJC}	1.2		°C/W
Voltage rate of change (rated V _R)	dv/dt	1,000		V/μs
Operating junction storage temperature range	T _{JTSTG}	-40 to +125		°C

NOTES:

- (1) 2.0μs pulse width, f=1.0 KHz
- (2) Pulse test: 300μs pulse width, 1% duty cycle
- (3) Thermal resistance from junction to case per leg

RATINGS AND CHARACTERISTIC CURVES SBL4030PT THRU SBL4040PT

FIG. 1 - FORWARD CURRENT DERATING CURVE

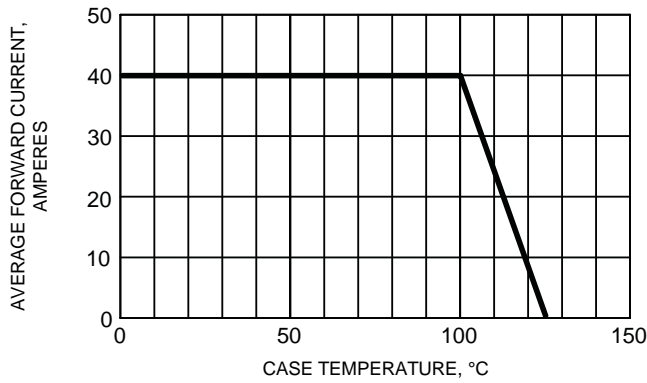


FIG. 2 - MAXIMUM NON-REPETITIVE PEAK FORWARD SURGE CURRENT PER LEG

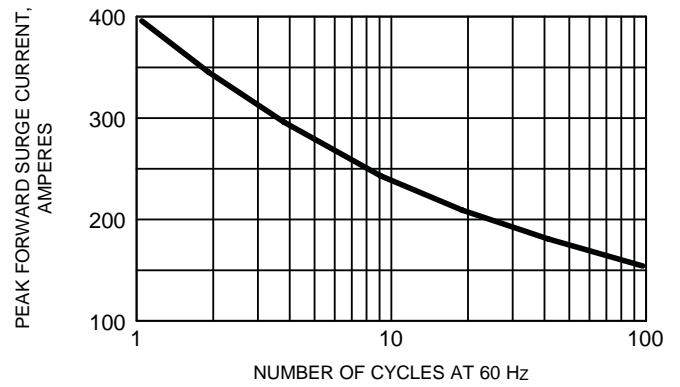


FIG. 3 - TYPICAL REVERSE CHARACTERISTICS PER LEG

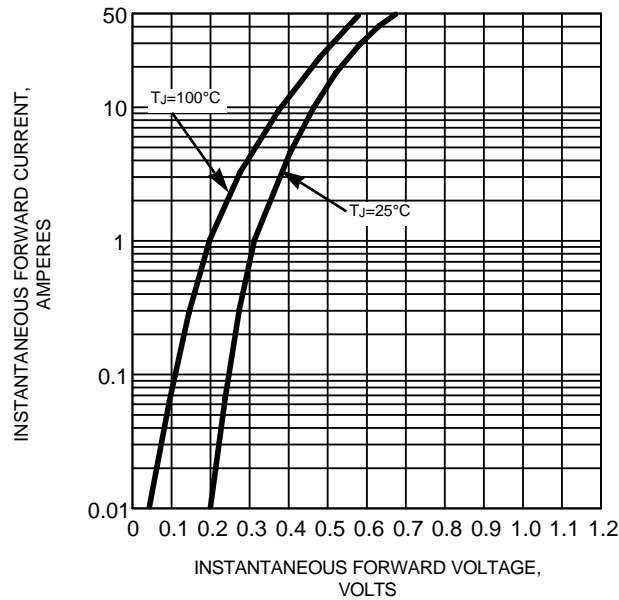


FIG. 4 - TYPICAL REVERSE CHARACTERISTICS PER LEG

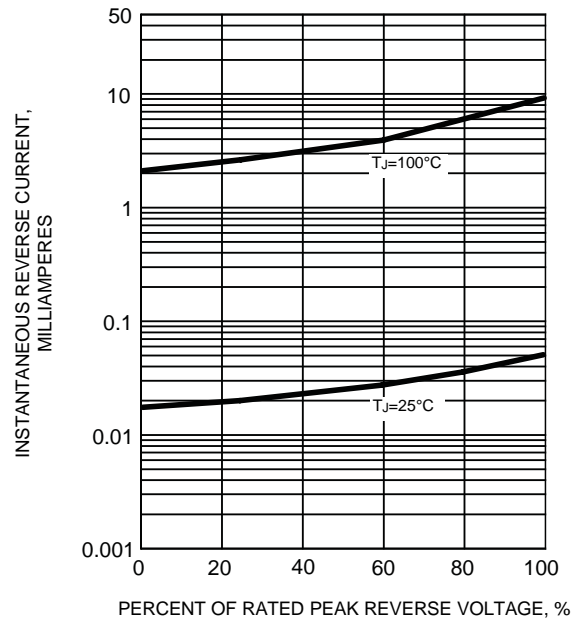


FIG. 5 - TYPICAL JUNCTION CAPACITANCE PER LEG

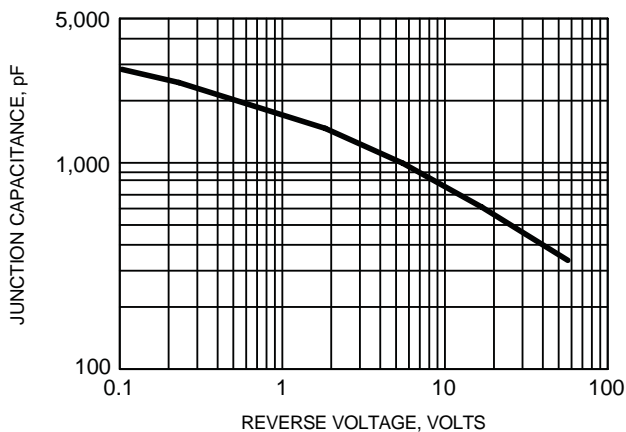


FIG. 6 - TYPICAL TRANSIENT THERMAL IMPEDANCE PER LEG

