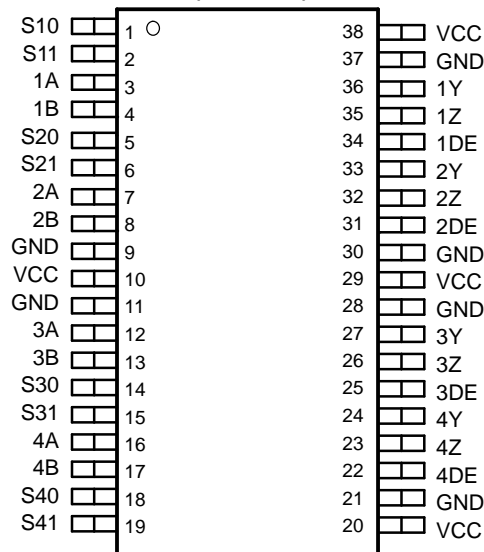


## LVDS 4x4 CROSSPOINT SWITCH

### FEATURES

- Greater Than 2.0 Gbps Operation
- Nonblocking Architecture Allows Each Output to be Connected to Any Input
- **Pk-Pk Jitter:**
  - 60 ps Typical at 2.0 Gbps
  - 110 ps Typical at 2.5 Gbps
- Compatible With ANSI TIA/EIA-644-A LVDS Standard
- Available Packaging 38-Pin TSSOP
- 25 mV of Input Voltage Threshold Hysteresis
- Propagation Delay Times: 800 ps Typical
- Inputs Electrically Compatible With LVPECL, CML and LVDS Signal Levels
- Operates From a Single 3.3-V Supply
- Low Power: 110 mA Typical
- Integrated 110-Ω Line Termination Resistors Available With SN65LVDT250

SN65LVDS250DBT ( Marked as LVDS250)  
SN65LVDT250DBT ( Marked as LVDT250)  
(TOP VIEW)



### APPLICATIONS

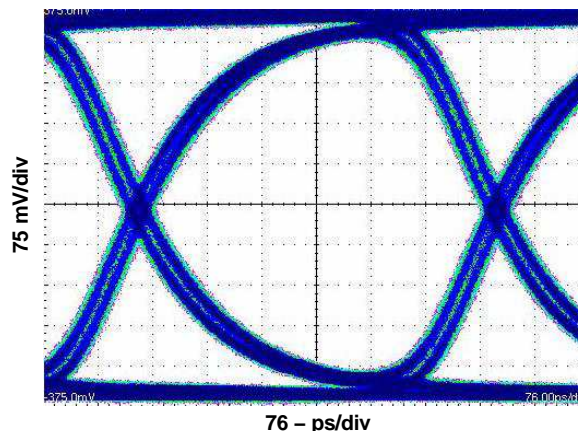
- Clock Buffering/Clock Muxing
- Wireless Base Stations
- High-Speed Network Routing
- Telecom/Datacom

### DESCRIPTION

The SN65LVDS250 and SN65LVDT250 are 4x4 nonblocking crosspoint switches in a flow-through pin-out allowing for ease in PCB layout. Low-voltage differential signaling (LVDS) is used to achieve a high-speed data throughput while using low power. Each of the output drivers includes a 4:1 multiplexer to allow any input to be routed to any output. Internal signal paths are fully differential to achieve the high signaling speeds while maintaining low signal skews. The SN65LVDT250 incorporates 110-Ω termination resistors for those applications where board space is a premium.

The SN65LVDS250 and SN65LVDT250 are characterized for operation from -40°C to 85°C.

### EYE PATTERN



$V_{IC} = 1.2 \text{ V}$   
 $|V_{ID}| = 200 \text{ mV}$   
 2 Gbps  
 Input = PRBS 2<sup>23</sup> -1  
 $V_{CC} = 3.3 \text{ V}$

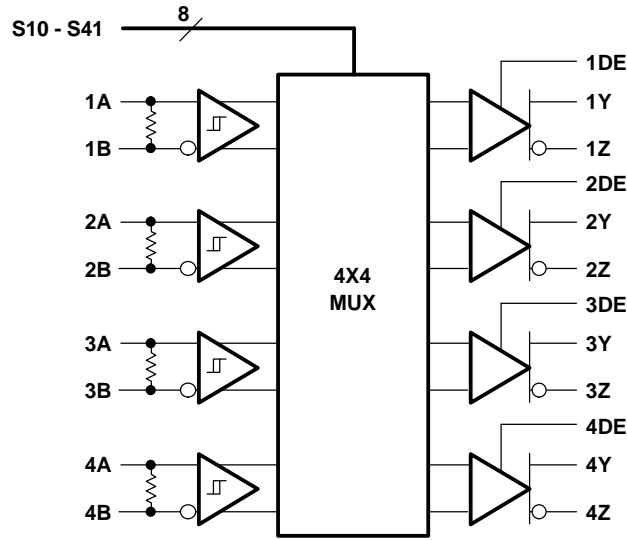


Please be aware that an important notice concerning availability, standard warranty, and use in critical applications of Texas Instruments semiconductor products and disclaimers thereto appears at the end of this data sheet.



These devices have limited built-in ESD protection. The leads should be shorted together or the device placed in conductive foam during storage or handling to prevent electrostatic damage to the MOS gates.

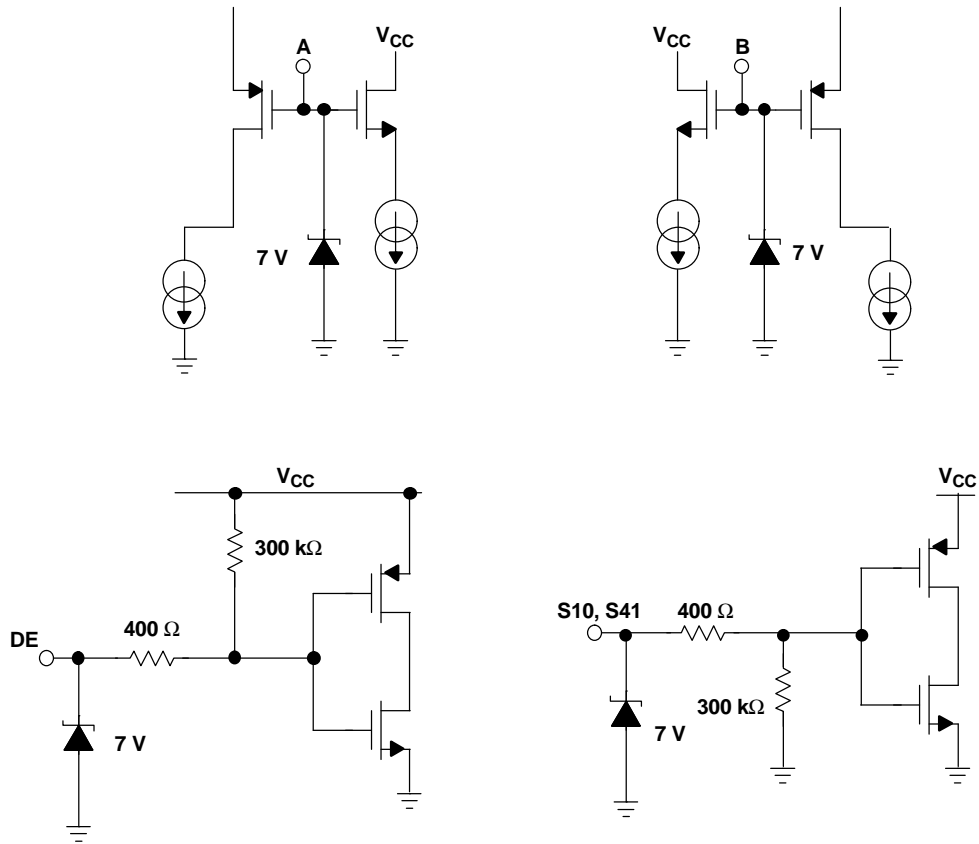
**LOGIC DIAGRAM**



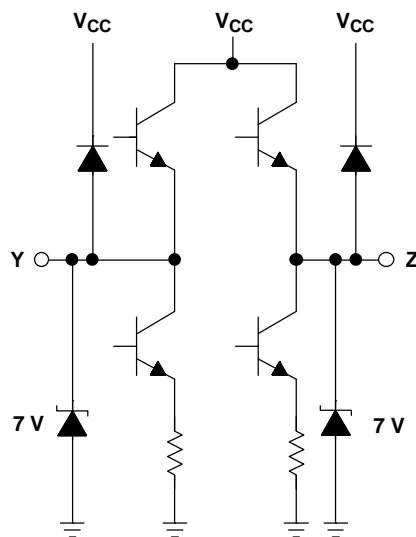
Integrated Termination on LVDT Only

**EQUIVALENT INPUT AND OUTPUT SCHEMATIC DIAGRAMS**

**INPUT LVDS250**



**OUTPUT LVDS250**



**Table 1. CROSSPOINT LOGIC TABLES**

OUTPUT CHANNEL 1			OUTPUT CHANNEL 2			OUTPUT CHANNEL 3			OUTPUT CHANNEL 4		
CONTROL PINS		INPUT SELECTED	CONTROL PINS		INPUT SELECTED	CONTROL PINS		INPUT SELECTED	CONTROL PINS		INPUT SELECTED
S10	S11	1Y/1Z	S20	S21	2Y/2Z	S30	S31	3Y/3Z	S40	S41	4Y/4Z
0	0	1A/1B	0	0	1A/1B	0	0	1A/1B	0	0	1A/1B
0	1	2A/2B	0	1	2A/2B	0	1	2A/2B	0	1	2A/2B
1	0	3A/3B	1	0	3A/3B	1	0	3A/3B	1	0	3A/3B
1	1	4A/4B	1	1	4A/4B	1	1	4A/4B	1	1	4A/4B

**PACKAGE DISSIPATION RATINGS**

PACKAGE	CIRCUIT BOARD MODEL	$T_A \leq 25^\circ\text{C}$ POWER RATING	DERATING FACTOR <sup>(1)</sup> ABOVE $T_A = 25^\circ\text{C}$	$T_A = 85^\circ\text{C}$ POWER RATING
TSSOP (DBT)	Low-K <sup>(2)</sup>	1038 mW	9.0 mW/°C	496 mW
TSSOP (DBT)	High-K <sup>(3)</sup>	1772 mW	15.4 mW/°C	847 mW

- (1) This is the inverse of the junction-to-ambient thermal resistance when board-mounted and with no air flow.
- (2) In accordance with the Low-K thermal metric definitions of EIA/JESD51-6
- (3) In accordance with the High-K thermal metric definitions of EIA/JESD51-6

**THERMAL CHARACTERISTICS**

PARAMETER	TEST CONDITIONS	VALUE	UNITS
$\Theta_{JB}$ Junction-to-board thermal resistance		40.3	°C/W
$\Theta_{JC}$ Junction-to-case thermal resistance		8.5	
$P_D$ Device power dissipation	$V_{CC} = 3.3\text{ V}, T_A = 25^\circ\text{C}, 1\text{ GHz}$	356	mW
	$V_{CC} = 3.6\text{ V}, T_A = 85^\circ\text{C}, 1\text{ GHz}$	522	mW

**ABSOLUTE MAXIMUM RATINGS**

over operating free-air temperature range unless otherwise noted<sup>(1)</sup>

	UNITS		
Supply voltage range, $V_{CC}$	-0.5 V to 4 V		
Voltage range <sup>(2)</sup>	S, DE	-0.5 V to 4 V	
	A, B	-0.5 V to 4 V	
	$ V_A - V_B $ (LVDT only)	1 V	
	Y, Z	-0.5 V to 4 V	
Electrostatic discharge	Human body model <sup>(3)</sup>	All pins	±3 kV
	Charged-device model <sup>(4)</sup>	All pins	±500 V
Continuous power dissipation	See Dissipation Rating Table		

- (1) Stresses beyond those listed under absolute maximum ratings may cause permanent damage to the device. These are stress ratings only, and functional operation of the device at these or any other conditions beyond those indicated under recommended operating conditions is not implied. Exposure to absolute-maximum-rated conditions for extended periods may affect device reliability.
- (2) All voltage values, except differential I/O bus voltages, are with respect to network ground terminal.
- (3) Tested in accordance with JEDEC Standard 22, Test Method A114-A.
- (4) Tested in accordance with JEDEC Standard 22, Test Method C101.

## RECOMMENDED OPERATING CONDITIONS

			MIN	NOM	MAX	UNIT
V <sub>CC</sub>	Supply voltage		3	3.3	3.6	V
V <sub>IH</sub>	High-level input voltage	S10-S41, 1DE-4DE	2		V <sub>CC</sub>	V
V <sub>IL</sub>	Low-level input voltage	S10-S41, 1DE-4DE	0		0.8	V
V <sub>ID</sub>	Magnitude of differential input voltage	LVDS	0.1		1	V
		LVDT	0.1		0.8	V
Input voltage (any combination of common-mode or input signals)			0		3.3	V
T <sub>J</sub>	Junction temperature				140	°C
T <sub>A</sub> <sup>(1)</sup>	Operating free-air temperature		-40		85	°C

(1) Maximum free-air temperature operation is allowed as long as the device maximum junction temperature is not exceeded.

## TIMING SPECIFICATIONS

PARAMETER			MIN	NOM	MAX	UNIT
t <sub>SET</sub>	Input to select setup time	See Figure 7		0.6		ns
t <sub>HOLD</sub>	Input to select hold time			0.2		ns
t <sub>SWITCH</sub>	Select to switch output			1.2	1.6	ns

## INPUT ELECTRICAL CHARACTERISTICS

over recommended operating conditions unless otherwise noted<sup>(1)</sup>

PARAMETER		TEST CONDITIONS	MIN	TYP <sup>(1)</sup>	MAX	UNIT
V <sub>IT+</sub>	Positive-going differential input voltage threshold	See Figure 1			100	mV
V <sub>IT-</sub>	Negative-going differential input voltage threshold	See Figure 1	-100			mV
V <sub>ID(HYS)</sub>	Differential input voltage hysteresis			25		mV
I <sub>IH</sub>	High-level input current	1DE-4DE	-10		20	μA
		S10-S41				
I <sub>IL</sub>	Low-level input current	1DE-4DE	-10		20	μA
		S10-S41				
I <sub>I</sub>	Input current (A or B inputs)	V <sub>I</sub> = 0 V or 3.3 V, second input at 1.2 V (other input open for LVDT)	-20		20	μA
I <sub>I(OFF)</sub>	Input current (A or B inputs)	V <sub>CC</sub> ≤ 1.5 V, V <sub>I</sub> = 0 V or 3.3 V, second input at 1.2 V (other input open for LVDT)	-20		20	μA
I <sub>IO</sub>	Input offset current ( I <sub>IA</sub> - I <sub>IB</sub>  ) (LVDS)	V <sub>IA</sub> = V <sub>IB</sub> , 0 ≤ V <sub>IA</sub> ≤ 3.3 V	-6		6	μA
R <sub>T</sub>	Termination resistance (LVDT)	V <sub>ID</sub> = 300 mV, V <sub>IC</sub> = 0 V to 3.3 V	90	110	132	Ω
	Termination resistance (LVDT with power-off)	V <sub>ID</sub> = 300 mV, V <sub>IC</sub> = 0 V to 3.3 V, V <sub>CC</sub> = 1.5 V	90	110	132	
C <sub>I</sub>	Differential input capacitance			2.5		pF

(1) All typical values are at 25°C and with a 3.3 V supply.

## OUTPUT ELECTRICAL CHARACTERISTICS

over recommended operating conditions unless otherwise noted

PARAMETER		TEST CONDITIONS	MIN	TYP	MAX	UNIT
$ V_{OD} $	Differential output voltage magnitude	See Figure 2	247	350	454	mV
$\Delta V_{OD} $	Change in differential output voltage magnitude between logic states	$V_{ID} = \pm 100$ mV	-50		50	mV
$V_{OC(SS)}$	Steady-state common-mode output voltage	See Figure 3	1.125		1.375	V
$\Delta V_{OC(SS)}$	Change in steady-state common-mode output voltage between logic states		-50		50	mV
$V_{OC(PP)}$	Peak-to-peak common-mode output voltage			50	150	mV
$I_{CC}$	Supply current	$R_L = 100 \Omega$		110	145	mA
$I_{OS}$	Short-circuit output current	$V_{OY}$ or $V_{OZ} = 0$ V	-27		27	mA
$I_{OSD}$	Differential short circuit output current	$V_{OD} = 0$ V	-12		12	mA
$I_{OZ}$	High-impedance output current	$V_O = 0$ V or $V_{CC}$			$\pm 1$	$\mu$ A
$C_O$	Differential output capacitance			2		pF

## SWITCHING CHARACTERISTICS

over recommended operating conditions unless otherwise noted

PARAMETER		TEST CONDITIONS	MIN	TYP	MAX	UNIT
$t_{PLH}$	Propagation delay time, low-to-high-level output	See Figure 4	700	800	1200	ps
$t_{PHL}$	Propagation delay time, high-to-low-level output		700	800	1200	
$t_r$	Differential output signal rise time (20%-80%)			200	245	
$t_f$	Differential output signal fall time (20%-80%)			200	245	
$t_{sk(p)}$	Pulse skew ( $ t_{PHL} - t_{PLH} $ ) <sup>(1)</sup>			0	50	ps
$t_{sk(o)}$	Channel-to-channel output skew <sup>(2)</sup>				175	ps
$t_{sk(pp)}$	Part-to-part skew <sup>(3)</sup>				300	ps
$t_{jit(per)}$	Period jitter, rms (1 standard deviation) <sup>(4)</sup>	See Figure 6		1	3	ps
$t_{jit(cc)}$	Cycle-to-cycle jitter (peak) <sup>(5)</sup>	See Figure 6		8	17	ps
$t_{jit(pp)}$	Peak-to-peak jitter <sup>(6)</sup>	See Figure 6		60	110	ps
$t_{jit(det)}$	Deterministic jitter, peak-to-peak <sup>(7)</sup>	See Figure 6		48	65	ps
$t_{PHZ}$	Propagation delay, high-level-to-high-impedance output	See Figure 5			6	ns
$t_{PLZ}$	Propagation delay, low-level-to-high-impedance output				6	
$t_{PZH}$	Propagation delay, high-impedance-to-high-level output				300	
$t_{PZL}$	Propagation delay, high-impedance-to-low-level output				300	

(1)  $t_{sk(p)}$  is the magnitude of the time difference between the  $t_{PLH}$  and  $t_{PHL}$  of any output of a single device.

(2)  $t_{sk(o)}$  is the maximum delay time difference between drivers over temperature,  $V_{CC}$ , and process.

(3)  $t_{sk(pp)}$  is the magnitude of the difference in propagation delay times between any specified terminals of two devices when both devices operate with the same supply voltages, at the same temperature, and have identical packages and test circuits.

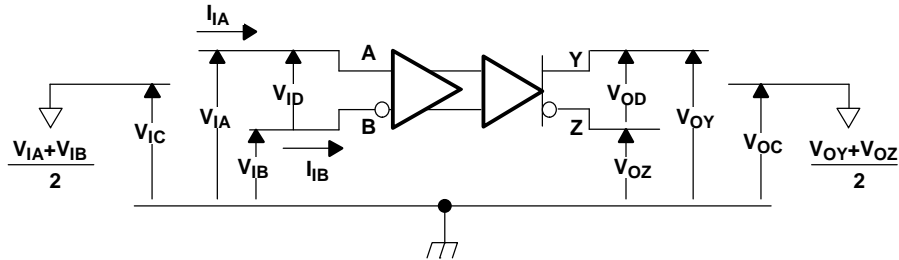
(4) Input voltage =  $V_{ID} = 200$  mV, 50% duty cycle at 1.0 GHz,  $t_r = t_f = 50$  ps (20% to 80%), measured over 1000 samples.

(5) Input voltage =  $V_{ID} = 200$  mV, 50% duty cycle at 1.0 GHz,  $t_r = t_f = 50$  ps (20% to 80%).

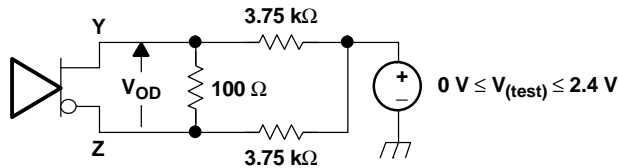
(6) Input voltage =  $V_{ID} = 200$  mV, 2<sup>23</sup>-1 PRBS pattern at 2.0 Gbps,  $t_r = t_f = 50$  ps (20% to 80%), measured over 200k samples.

(7) Input voltage =  $V_{ID} = 200$  mV, 2<sup>7</sup>-1 PRBS pattern at 2.0 Gbps,  $t_r = t_f = 50$  ps (20% to 80%).

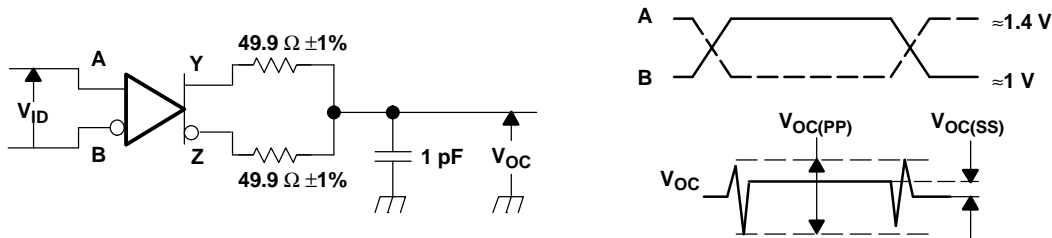
**PARAMETER MEASUREMENT INFORMATION**



**Figure 1. Voltage and Current Definitions**

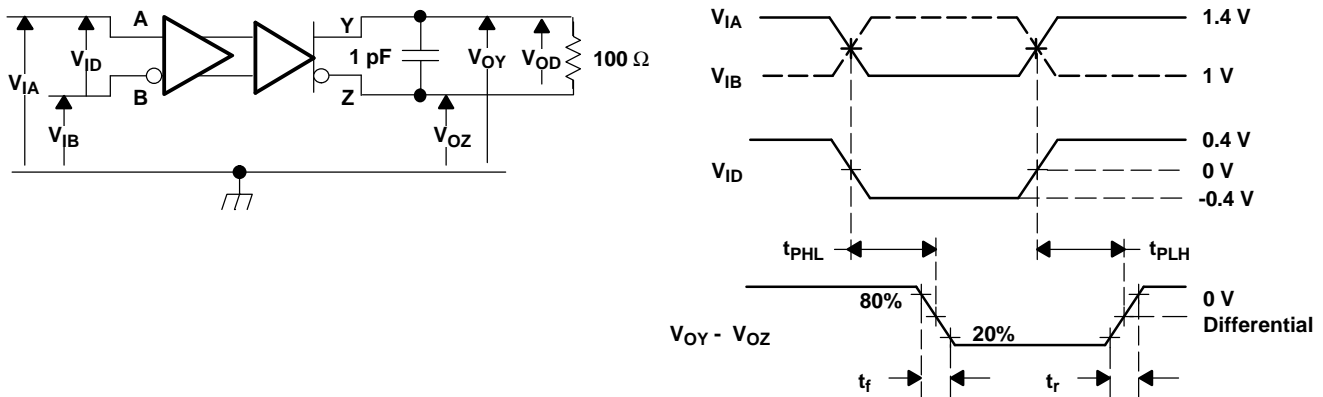


**Figure 2. Differential Output Voltage ( $V_{OD}$ ) Test Circuit**



- A. All input pulses are supplied by a generator having the following characteristics:  $t_r$  or  $t_f \leq 1$  ns, pulse-repetition rate (PRR) = 0.5 Mpps, pulse width =  $500 \pm 10$  ns;  $R_L = 100 \Omega$ ;  $C_L$  includes instrumentation and fixture capacitance within 0,06 mm of the DUT; the measurement of  $V_{OC(PP)}$  is made on test equipment with a -3 dB bandwidth of at least 300 MHz.

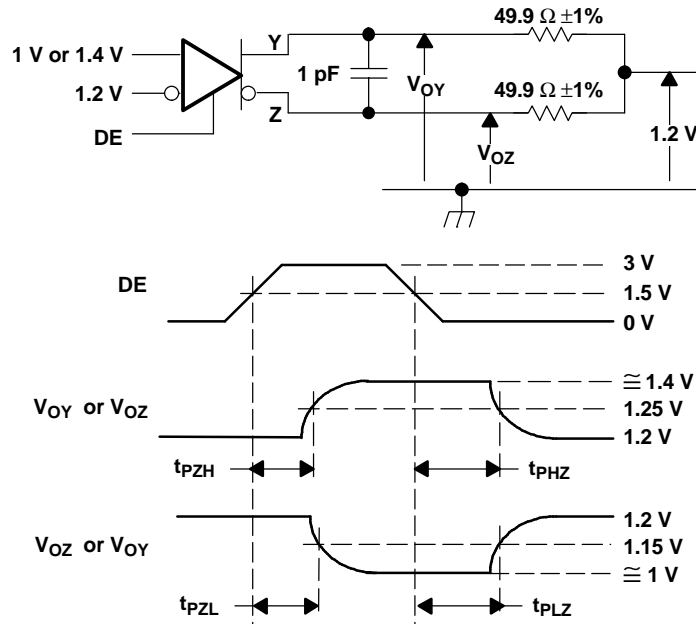
**Figure 3. Test Circuit and Definitions for the Driver Common-Mode Output Voltage**



- A. All input pulses are supplied by a generator having the following characteristics:  $t_r$  or  $t_f \leq 0.25$  ns, pulse-repetition rate (PRR) = 0.5 Mpps, pulse width =  $500 \pm 10$  ns.  $C_L$  includes instrumentation and fixture capacitance within 0,06 mm of the DUT.

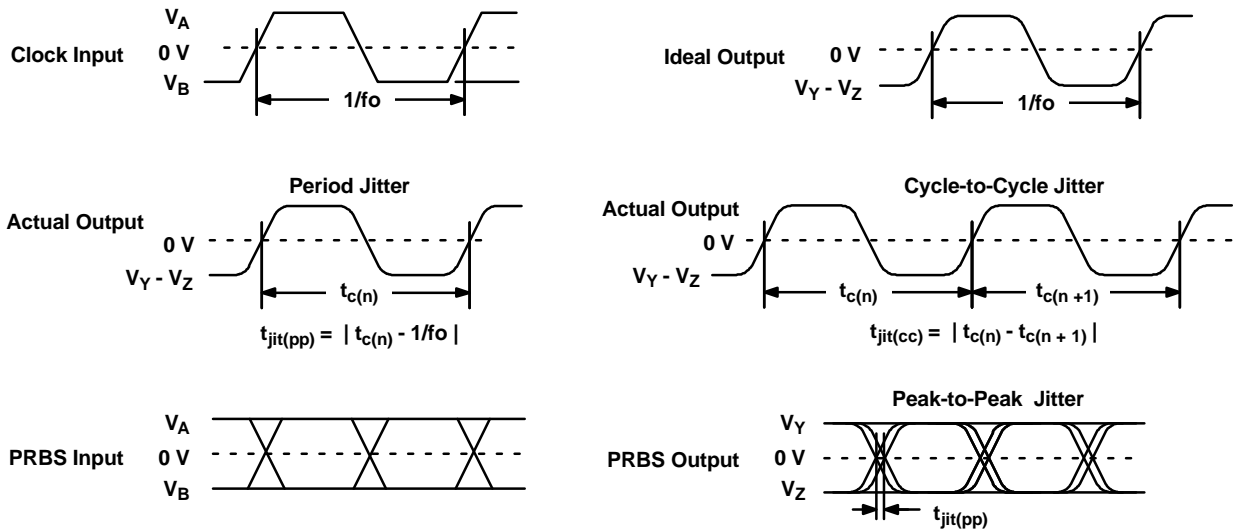
**Figure 4. Timing Test Circuit and Waveforms**

PARAMETER MEASUREMENT INFORMATION (continued)



- A. All input pulses are supplied by a generator having the following characteristics:  $t_r$  or  $t_f \leq 1$  ns, pulse-repetition rate (PRR) = 0.5 Mpps, pulse width =  $500 \pm 10$  ns.  $C_L$  includes instrumentation and fixture capacitance within 0,06 mm of the DUT.

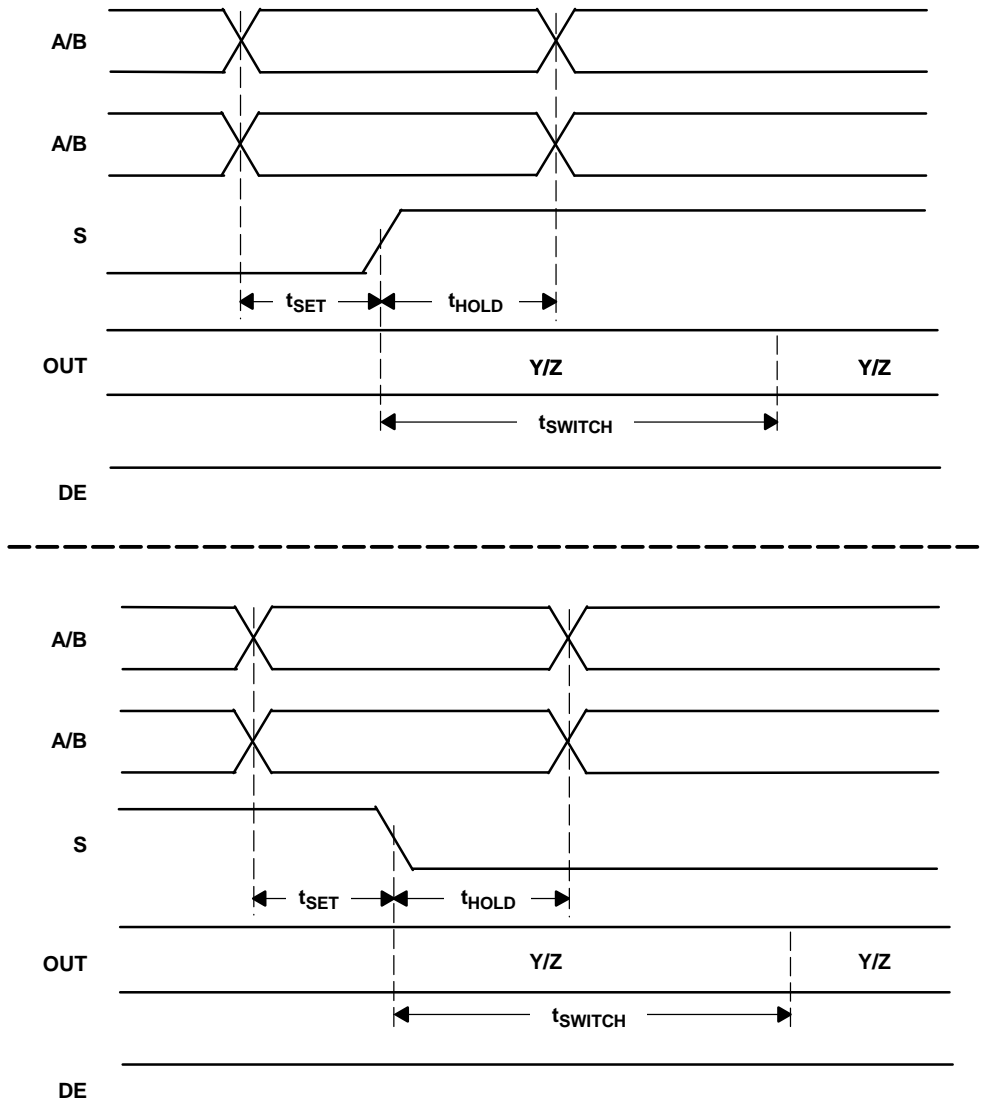
Figure 5. Enable and Disable Time Circuit and Definitions



- A. All input pulses are supplied by an Agilent 81250 Stimulus System.  
B. The measurement is made on a TEK TDS6604 running TDSJIT3 application software.

Figure 6. Driver Jitter Measurement Waveforms

**PARAMETER MEASUREMENT INFORMATION (continued)**



A.  $t_{SET}$  and  $t_{HOLD}$  times specify that data must be in a stable state before and after mux control switches.

**Figure 7. Input to Select for Both Rising and Falling Edge Setup and Hold Times**

TYPICAL CHARACTERISTICS

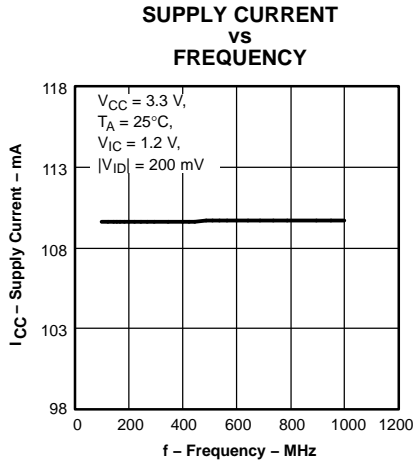


Figure 8.

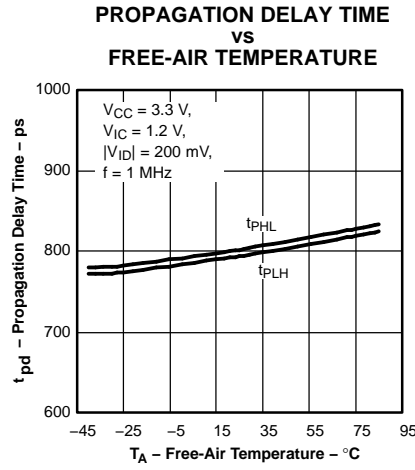


Figure 9.

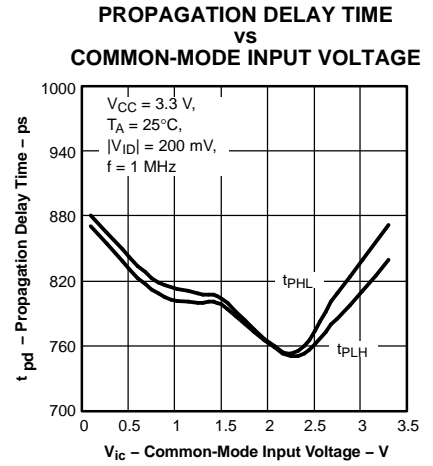


Figure 10.

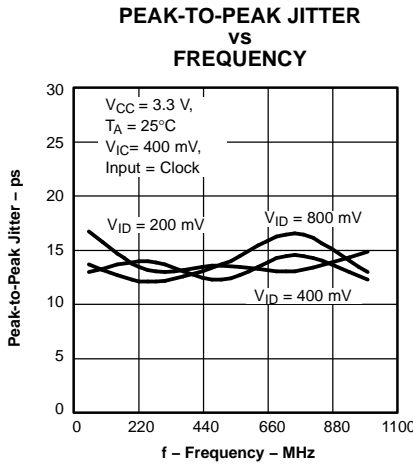


Figure 11.

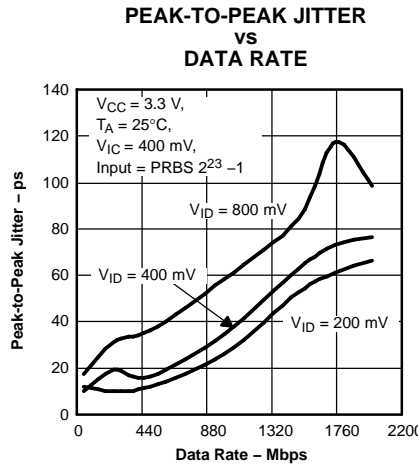


Figure 12.

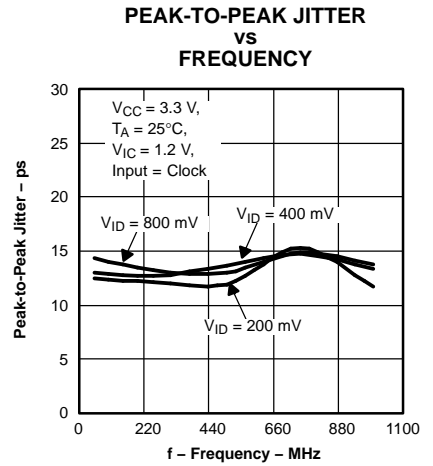


Figure 13.

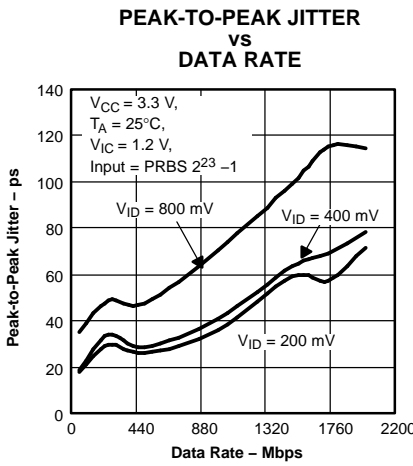


Figure 14.

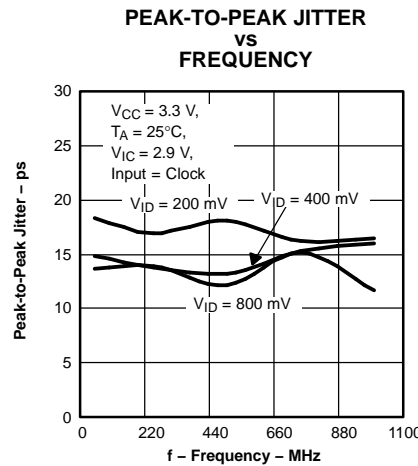


Figure 15.

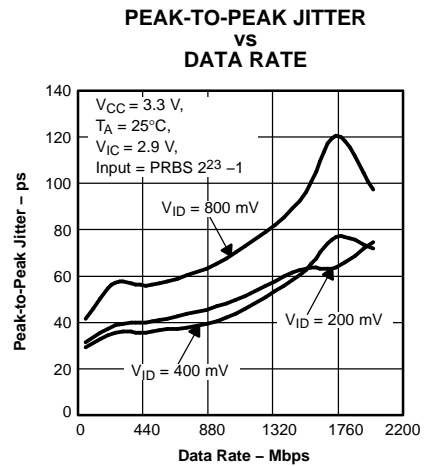


Figure 16.

**TYPICAL CHARACTERISTICS (continued)**

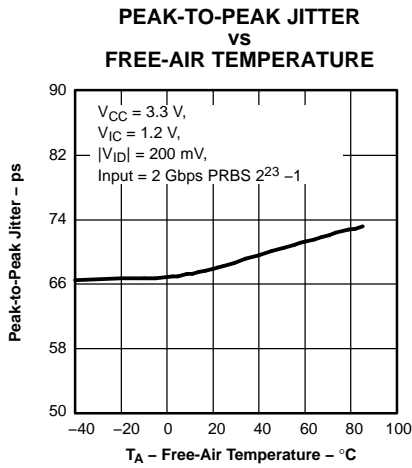


Figure 17.

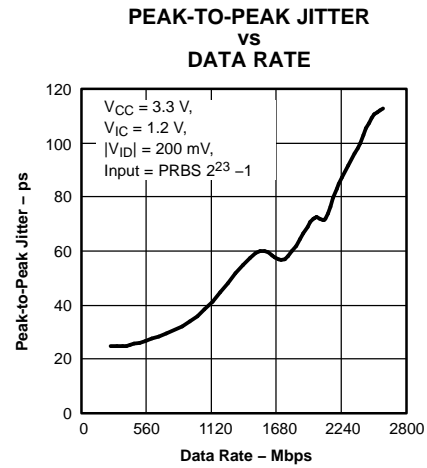


Figure 18.

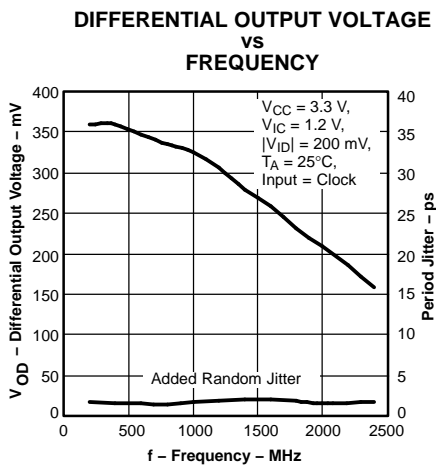


Figure 19.

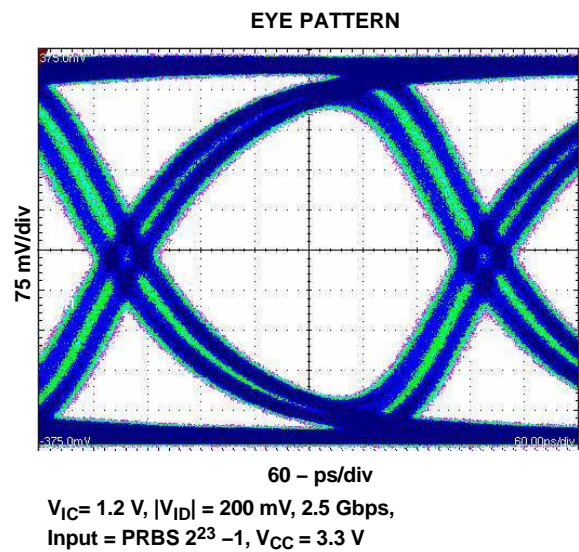
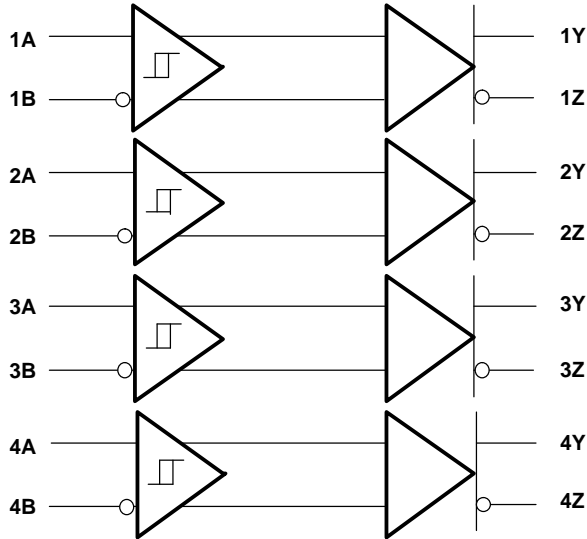


Figure 20.

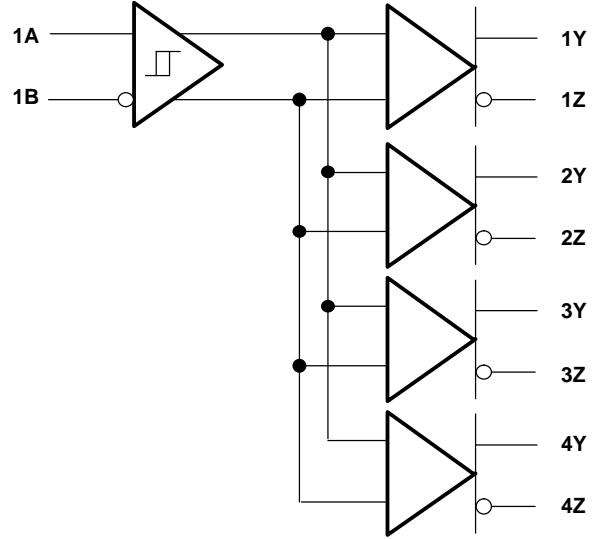
APPLICATION INFORMATION

CONFIGURATION EXAMPLES

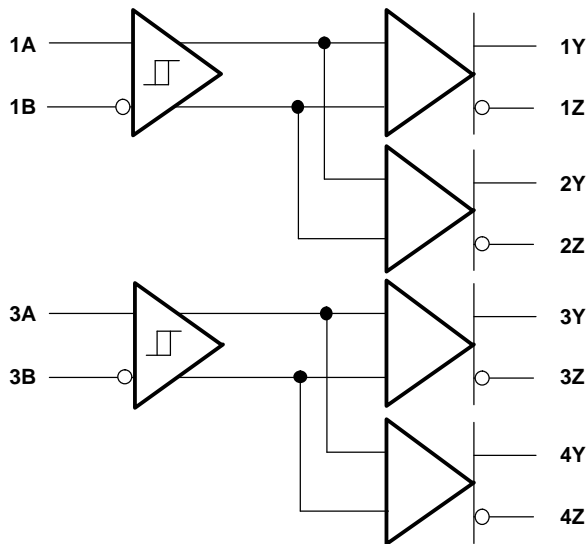
S10	S11	S20	S21
0	0	0	1
S30	S31	S40	S41
1	0	1	1



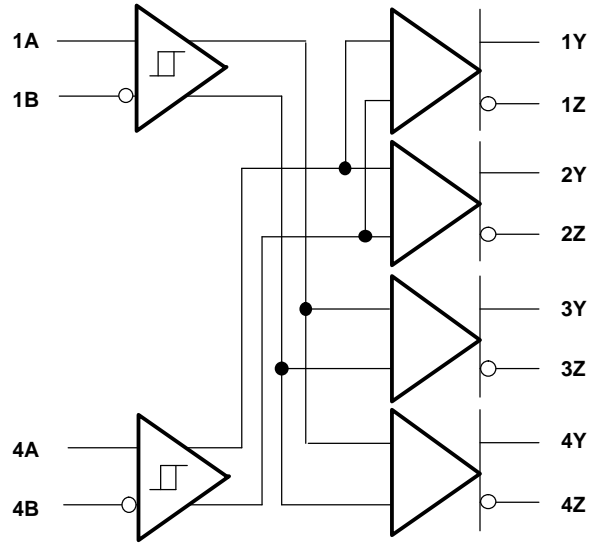
S10	S11	S20	S21
0	0	0	0
S30	S31	S40	S41
0	0	0	0



S10	S11	S20	S21
0	0	0	0
S30	S31	S40	S41
1	0	1	0

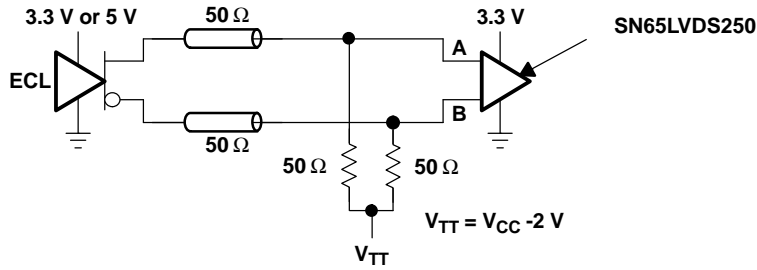


S10	S11	S20	S21
1	1	1	1
S30	S31	S40	S41
0	0	0	0

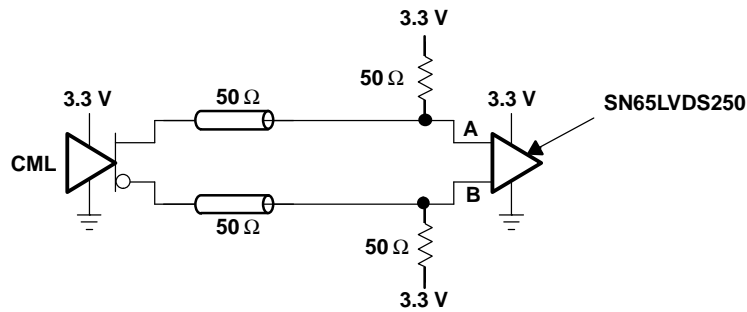


**APPLICATION INFORMATION (continued)**

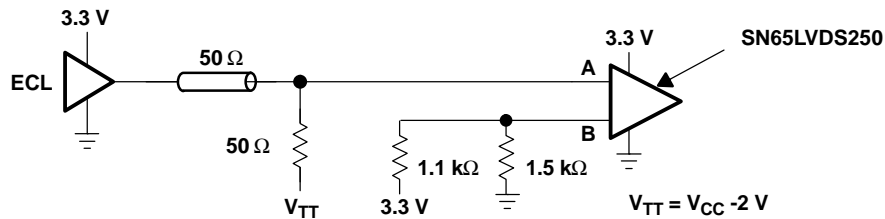
**TYPICAL APPLICATION CIRCUITS (ECL, PECL, LVDS, etc.)**



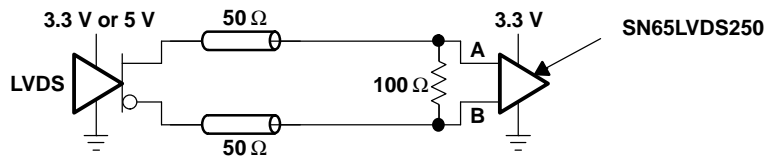
**Figure 21. Low-Voltage Positive Emitter-Coupled Logic (LVPECL)**



**Figure 22. Current-Mode Logic (CML)**



**Figure 23. Single-Ended (LVPECL)**



**Figure 24. Low-Voltage Differential Signaling (LVDS)**

**PACKAGING INFORMATION**

Orderable Device	Status <sup>(1)</sup>	Package Type	Package Drawing	Pins	Package Qty	Eco Plan <sup>(2)</sup>	Lead/Ball Finish	MSL Peak Temp <sup>(3)</sup>
SN65LVDS250DBT	ACTIVE	SM8	DBT	38	50	None	CU NIPDAU	Level-2-220C-1 YEAR
SN65LVDS250DBTR	ACTIVE	SM8	DBT	38	2000	None	CU NIPDAU	Level-2-220C-1 YEAR
SN65LVDT250DBT	ACTIVE	SM8	DBT	38	50	None	CU NIPDAU	Level-2-220C-1 YEAR
SN65LVDT250DBTR	ACTIVE	SM8	DBT	38	2000	None	CU NIPDAU	Level-2-220C-1 YEAR

<sup>(1)</sup> The marketing status values are defined as follows:

**ACTIVE:** Product device recommended for new designs.

**LIFEBUY:** TI has announced that the device will be discontinued, and a lifetime-buy period is in effect.

**NRND:** Not recommended for new designs. Device is in production to support existing customers, but TI does not recommend using this part in a new design.

**PREVIEW:** Device has been announced but is not in production. Samples may or may not be available.

**OBSOLETE:** TI has discontinued the production of the device.

<sup>(2)</sup> Eco Plan - May not be currently available - please check <http://www.ti.com/productcontent> for the latest availability information and additional product content details.

**None:** Not yet available Lead (Pb-Free).

**Pb-Free (RoHS):** TI's terms "Lead-Free" or "Pb-Free" mean semiconductor products that are compatible with the current RoHS requirements for all 6 substances, including the requirement that lead not exceed 0.1% by weight in homogeneous materials. Where designed to be soldered at high temperatures, TI Pb-Free products are suitable for use in specified lead-free processes.

**Green (RoHS & no Sb/Br):** TI defines "Green" to mean "Pb-Free" and in addition, uses package materials that do not contain halogens, including bromine (Br) or antimony (Sb) above 0.1% of total product weight.

<sup>(3)</sup> MSL, Peak Temp. -- The Moisture Sensitivity Level rating according to the JEDEC industry standard classifications, and peak solder temperature.

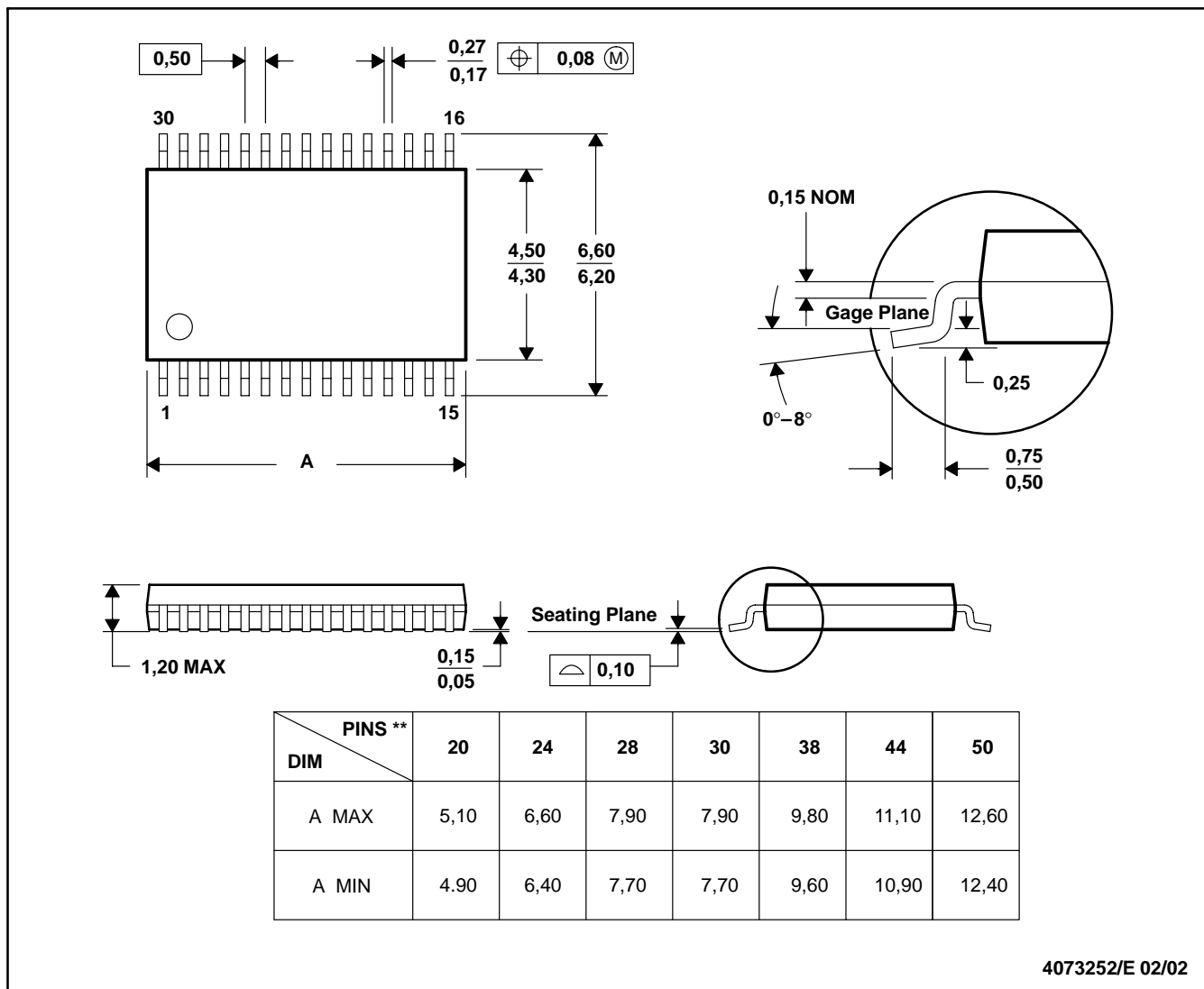
**Important Information and Disclaimer:** The information provided on this page represents TI's knowledge and belief as of the date that it is provided. TI bases its knowledge and belief on information provided by third parties, and makes no representation or warranty as to the accuracy of such information. Efforts are underway to better integrate information from third parties. TI has taken and continues to take reasonable steps to provide representative and accurate information but may not have conducted destructive testing or chemical analysis on incoming materials and chemicals. TI and TI suppliers consider certain information to be proprietary, and thus CAS numbers and other limited information may not be available for release.

In no event shall TI's liability arising out of such information exceed the total purchase price of the TI part(s) at issue in this document sold by TI to Customer on an annual basis.

DBT (R-PDSO-G\*\*)

PLASTIC SMALL-OUTLINE PACKAGE

30 PINS SHOWN



4073252/E 02/02

- NOTES: A. All linear dimensions are in millimeters.  
 B. This drawing is subject to change without notice.  
 C. Body dimensions do not include mold flash or protrusion.  
 D. Falls within JEDEC MO-153

## IMPORTANT NOTICE

Texas Instruments Incorporated and its subsidiaries (TI) reserve the right to make corrections, modifications, enhancements, improvements, and other changes to its products and services at any time and to discontinue any product or service without notice. Customers should obtain the latest relevant information before placing orders and should verify that such information is current and complete. All products are sold subject to TI's terms and conditions of sale supplied at the time of order acknowledgment.

TI warrants performance of its hardware products to the specifications applicable at the time of sale in accordance with TI's standard warranty. Testing and other quality control techniques are used to the extent TI deems necessary to support this warranty. Except where mandated by government requirements, testing of all parameters of each product is not necessarily performed.

TI assumes no liability for applications assistance or customer product design. Customers are responsible for their products and applications using TI components. To minimize the risks associated with customer products and applications, customers should provide adequate design and operating safeguards.

TI does not warrant or represent that any license, either express or implied, is granted under any TI patent right, copyright, mask work right, or other TI intellectual property right relating to any combination, machine, or process in which TI products or services are used. Information published by TI regarding third-party products or services does not constitute a license from TI to use such products or services or a warranty or endorsement thereof. Use of such information may require a license from a third party under the patents or other intellectual property of the third party, or a license from TI under the patents or other intellectual property of TI.

Reproduction of information in TI data books or data sheets is permissible only if reproduction is without alteration and is accompanied by all associated warranties, conditions, limitations, and notices. Reproduction of this information with alteration is an unfair and deceptive business practice. TI is not responsible or liable for such altered documentation.

Resale of TI products or services with statements different from or beyond the parameters stated by TI for that product or service voids all express and any implied warranties for the associated TI product or service and is an unfair and deceptive business practice. TI is not responsible or liable for any such statements.

Following are URLs where you can obtain information on other Texas Instruments products and application solutions:

<b>Products</b>		<b>Applications</b>	
Amplifiers	<a href="http://amplifier.ti.com">amplifier.ti.com</a>	Audio	<a href="http://www.ti.com/audio">www.ti.com/audio</a>
Data Converters	<a href="http://dataconverter.ti.com">dataconverter.ti.com</a>	Automotive	<a href="http://www.ti.com/automotive">www.ti.com/automotive</a>
DSP	<a href="http://dsp.ti.com">dsp.ti.com</a>	Broadband	<a href="http://www.ti.com/broadband">www.ti.com/broadband</a>
Interface	<a href="http://interface.ti.com">interface.ti.com</a>	Digital Control	<a href="http://www.ti.com/digitalcontrol">www.ti.com/digitalcontrol</a>
Logic	<a href="http://logic.ti.com">logic.ti.com</a>	Military	<a href="http://www.ti.com/military">www.ti.com/military</a>
Power Mgmt	<a href="http://power.ti.com">power.ti.com</a>	Optical Networking	<a href="http://www.ti.com/opticalnetwork">www.ti.com/opticalnetwork</a>
Microcontrollers	<a href="http://microcontroller.ti.com">microcontroller.ti.com</a>	Security	<a href="http://www.ti.com/security">www.ti.com/security</a>
		Telephony	<a href="http://www.ti.com/telephony">www.ti.com/telephony</a>
		Video & Imaging	<a href="http://www.ti.com/video">www.ti.com/video</a>
		Wireless	<a href="http://www.ti.com/wireless">www.ti.com/wireless</a>

Mailing Address: Texas Instruments  
Post Office Box 655303 Dallas, Texas 75265