

## PROGRAMMABLE 27-BIT SERIAL-TO-PARALLEL RECEIVER

Check for Samples: [SN65LVDS314](#)

### FEATURES

- **Serial Interface Technology**
- **Compatible with FlatLink™3G such as SN65LVDS301 and SN65LVDS311**
- **Supports Video Interfaces up to 24-bit RGB Data and 3 Control Bits Received over 1, 2 or 3 SubLVDS Differential Lines**
- **SubLVDS Differential Voltage Levels**
- **Flexible RGB Signaling Level of 1.8 V to 3.3 V**
- **Up to 1.755 Gbps Data Throughput**
- **Three Operating Modes to Conserve Power**
  - Active mode QVGA - 17 mW
  - Typical Shutdown - 0.6  $\mu$ W
  - Typical Standby Mode - 54  $\mu$ W Typical
- **Bus-Swap Function for PCB-Layout Flexibility**
- **ESD Rating > 4 kV (HBM)**
- **Pixel Clock Range of 4 MHz–65 MHz**
- **Failsafe on all CMOS Inputs**
- **Packaged in 8 mm x 8 mm QFN with 0.4 mm pin pitch**
- **Very low EMI meets SAE J1752/3 'Kh'-spec**

### APPLICATIONS

- **Small Low-Emission Interface between Graphics Controller and LCD Display**
- **Cameras, Camcorders, Embedded Computers**
- **Portable Multimedia Players**

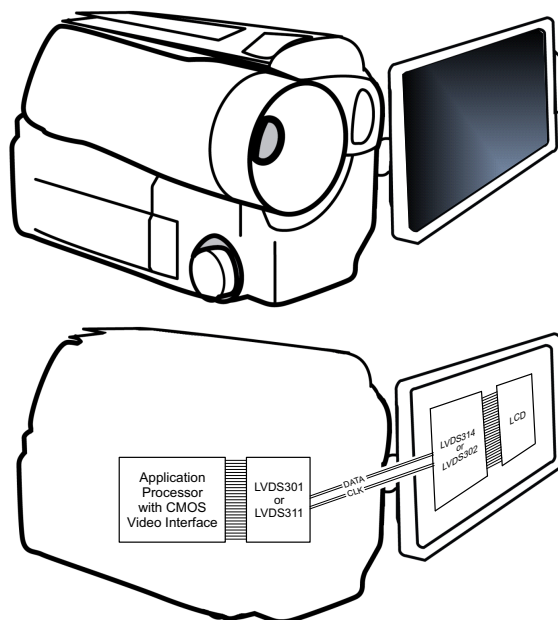
### DESCRIPTION

The SN65LVDS314 receiver de-serializes FlatLink™3G compliant serial input data to 27 parallel data outputs. The SN65LVDS314 receiver contains one shift register to load 30 bits from 1, 2 or 3 serial inputs and latches the 24 pixel bits and 3 control bits out to the parallel CMOS outputs after checking the parity bit. If the parity check confirms correct parity, the Channel Parity Error (CPE) output remains low. If a parity error is detected, the CPE output generates a high pulse while the data output bus disregards the newly-received pixel. Instead, the last data word is held on the output bus for another clock cycle.

The serial data and clock are received via Sub Low-Voltage Differential Signalling (SubLVDS) lines. The SN65LVDS314 supports three operating power modes (Shutdown, Standby, and Active) to conserve power.

When receiving, the PLL locks to the incoming clock CLK and generates an internal high-speed clock at the line rate of the data lines. The data is serially loaded into a shift register using the internal high-speed clock. The deserialized data is presented on the parallel output bus with a recreation of the Pixel clock PCLK generated from the internal high-speed clock. If no input CLK signal is present, the output bus is held static with the PCLK and DE held low, while all other parallel outputs are pulled high.

The parallel (CMOS) output bus offers a bus-swap feature. The SWAP control pin controls the output pin order of the output pixel data to be either R[7:0], G[7:0], B[7:0], VS, HS, DE or B[0:7], G[0:7], R[0:7], VS, HS, DE. This gives a PCB designer the flexibility to better match the bus to the LCD driver pinout or to put the receiver device on the top side or the bottom side of the PCB. The F/S control input selects between a slow CMOS bus output rise time for best EMI and power consumption and a fast CMOS output for increased speed or higher load designs.



Please be aware that an important notice concerning availability, standard warranty, and use in critical applications of Texas Instruments semiconductor products and disclaimers thereto appears at the end of this data sheet.

FlatLink is a trademark of Texas Instruments.

# SN65LVDS314

SLLSE98A – AUGUST 2012 – REVISED SEPTEMBER 2012

www.ti.com



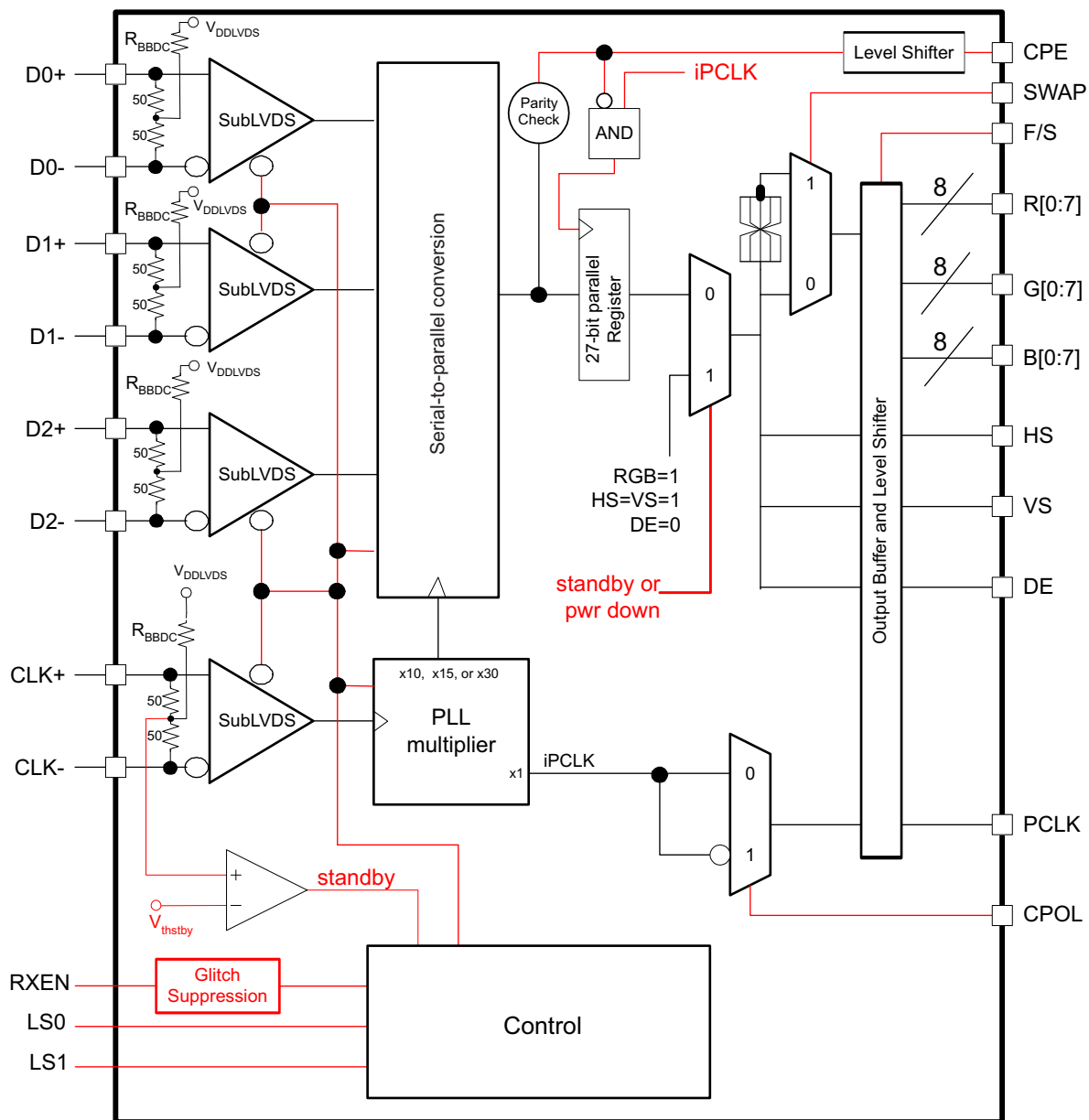
This integrated circuit can be damaged by ESD. Texas Instruments recommends that all integrated circuits be handled with appropriate precautions. Failure to observe proper handling and installation procedures can cause damage.

ESD damage can range from subtle performance degradation to complete device failure. Precision integrated circuits may be more susceptible to damage because very small parametric changes could cause the device not to meet its published specifications.

## DESCRIPTION (CONTINUED)

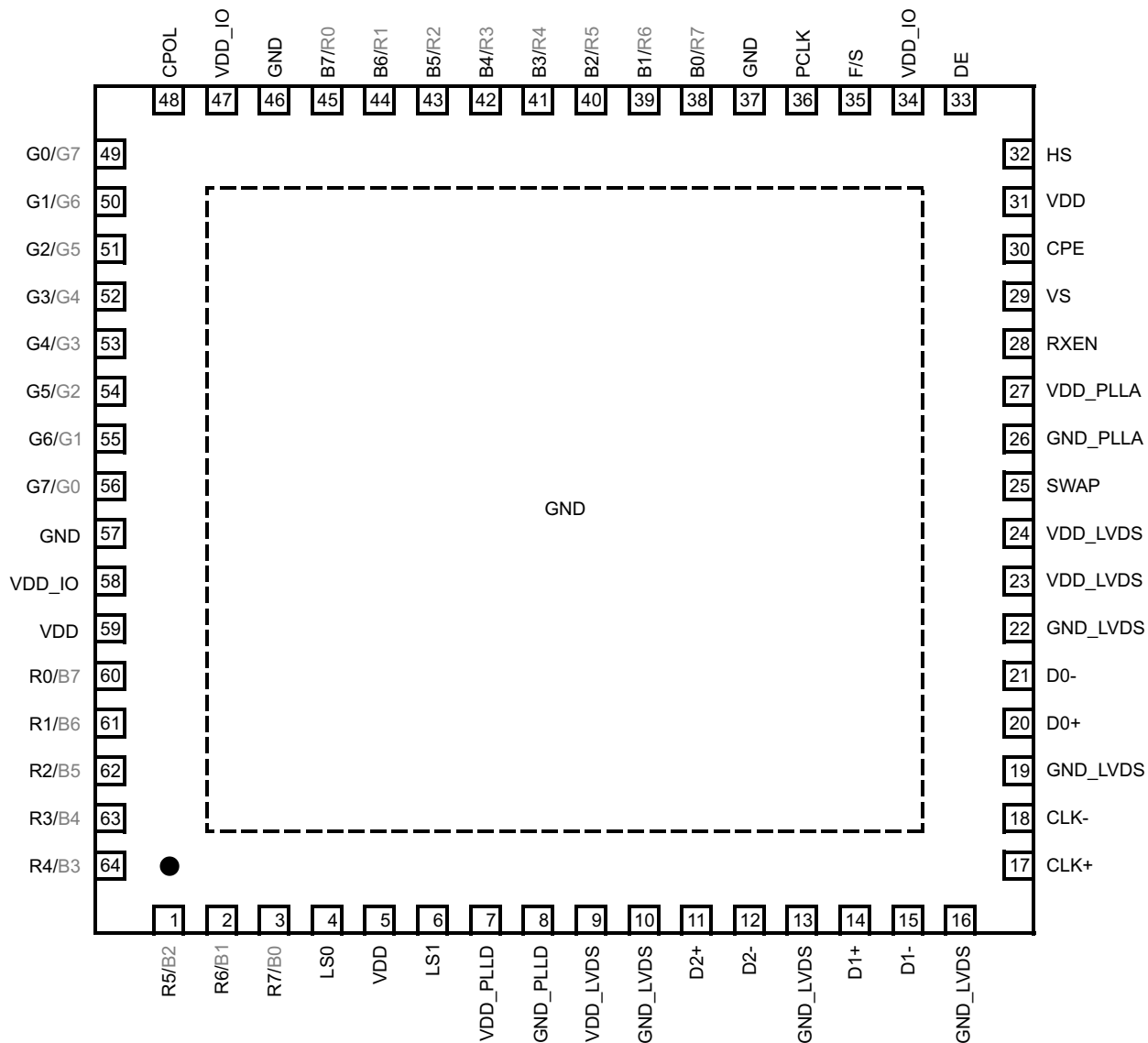
Two Link Select lines LS0 and LS1 select whether 1, 2, or 3 serial links are used. The RXEN input may be used to put the SN65LVDS314 in a Shutdown mode. The SN65LVDS314 enters an active Standby mode if the common mode voltage of the CLK input becomes shifted to VDDLVDs (e.g., transmitter releases the CLK output into high-impedance). This minimizes power consumption without the need of switching an external control pin. The SN65LVDS314 is characterized for operation over ambient air temperatures of  $-40^{\circ}\text{C}$  to  $85^{\circ}\text{C}$ . All CMOS and SubLVDS signals are 2-V tolerant with  $V_{DD} = 0\text{ V}$ . This feature allows signal powerup before  $V_{DD}$  is stabilized.

## FUNCTIONAL BLOCK DIAGRAM



PINOUT – TOP VIEW

RSK PACKAGE  
(TOP VIEW)



RGB output pin assignment based on SWAP pin setting:  
SWAP = 0 / SWAP = 1

# SN65LVDS314

SLLSE98A – AUGUST 2012 – REVISED SEPTEMBER 2012

www.ti.com

## SWAP PIN FUNCTIONALITY

The SWAP pin allows the pcb designer to reverse the RGB bus, minimizing potential signal crossovers due to signal routing. The two drawings beneath show the RGB signal pin assignment based on the SWAP-pin setting.

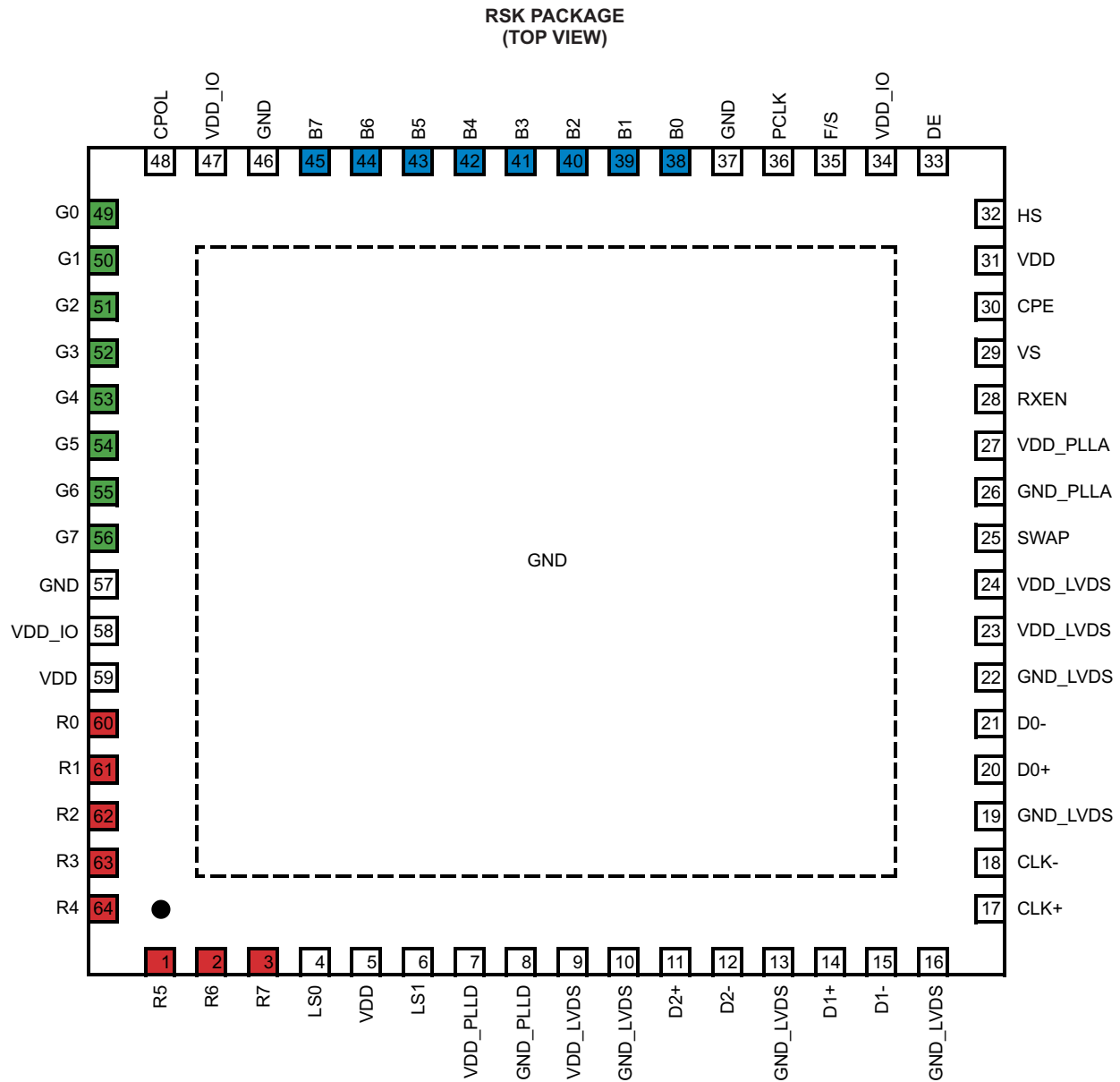


Figure 1. Pinout With SWAP PIN = GND

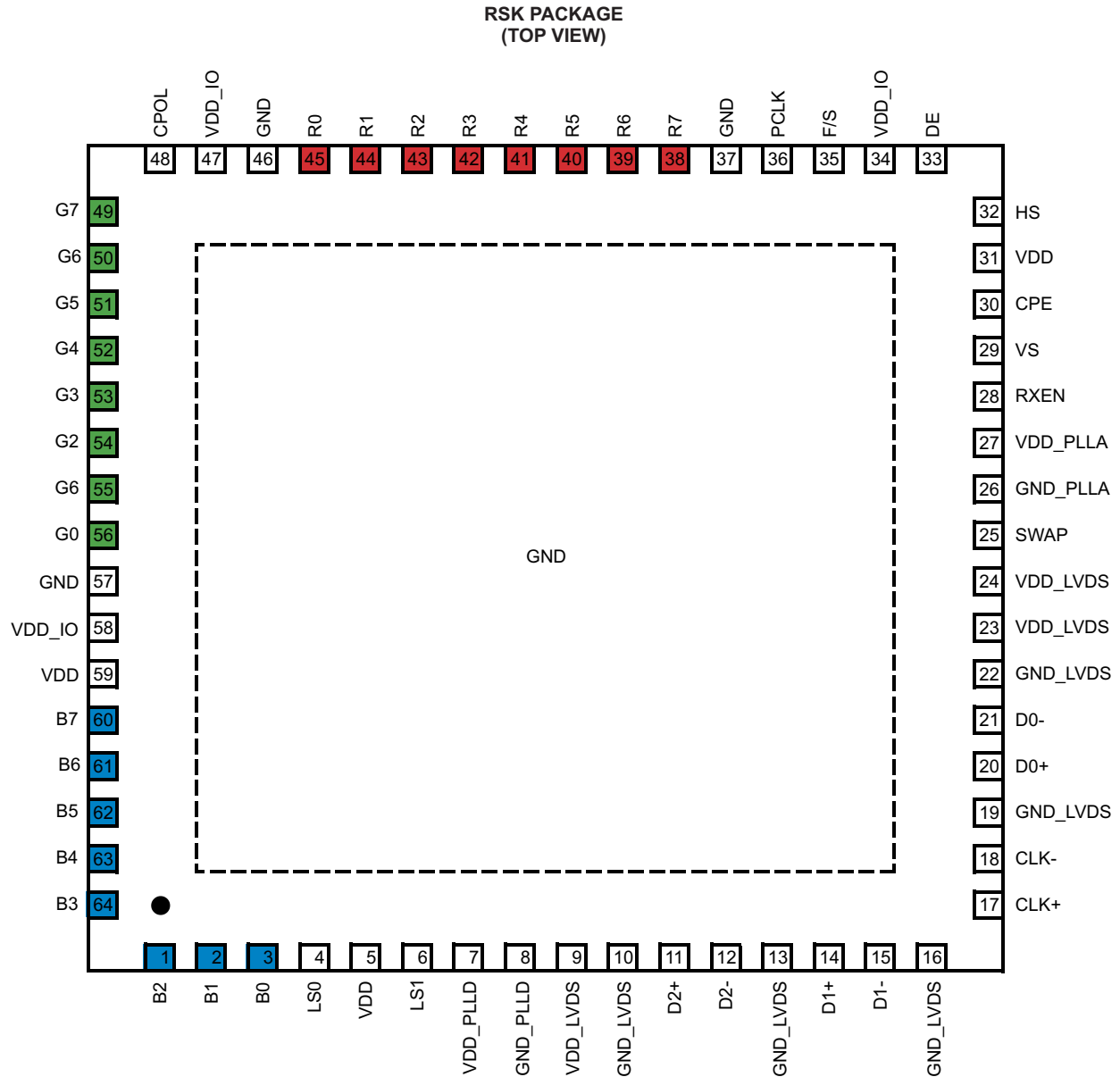


Figure 2. Pinout With SWAP PIN = VDD

**SN65LVDS314**

SLLSE98A – AUGUST 2012 – REVISED SEPTEMBER 2012

[www.ti.com](http://www.ti.com)
**Table 1. Pin Description**

| PIN | SWAP | SIGNAL   | PIN | SWAP | SIGNAL   | PIN | SWAP | SIGNAL |
|-----|------|----------|-----|------|----------|-----|------|--------|
| 1   | L    | R5       | 22  | -    | GND_LVDS | 43  | L    | B5     |
|     | H    | B2       |     | H    | R2       |     |      |        |
| 2   | L    | R6       | 23  | -    | VDD_LVDS | 44  | L    | B6     |
|     | H    | B1       |     | H    | R1       |     |      |        |
| 3   | L    | R7       | 24  | -    | VDD_LVDS | 45  | L    | B7     |
|     | H    | B0       |     | H    | R0       |     |      |        |
| 4   | -    | LS0      | 25  | -    | SWAP     | 46  | -    | GND    |
| 5   | -    | VDD      | 26  | -    | GND_PLLA | 47  | -    | VDD_IO |
| 6   | -    | LS1      | 27  | -    | VDD_PLLA | 48  | -    | CPOL   |
| 7   | -    | VDD_PLLD | 28  | -    | RXEN     | 49  | L    | G0     |
| 8   | -    | GND_PLLD | 29  | -    | VS       |     | H    | G7     |
| 9   | -    | VDD_LVDS | 30  | -    | CPE      | 50  | L    | G1     |
| 10  | -    | GND_LVDS | 31  | -    | VDD      |     | H    | G6     |
| 11  | -    | D2+      | 32  | -    | HS       | 51  | L    | G2     |
| 12  | -    | D2-      | 33  | -    | DE       |     | H    | G5     |
| 13  | -    | GND_LVDS | 34  | -    | VDD_IO   | 52  | L    | G3     |
| 14  | -    | D1+      | 35  | -    | F/S      |     | H    | G4     |
| 15  | -    | D1-      | 36  | -    | PCLK     | 53  | L    | G4     |
| 16  | -    | GND_LVDS | 37  | -    | GND      |     | H    | G3     |
| 17  | -    | CLK+     | 38  | L    | B0       | 54  | L    | G5     |
|     |      |          |     | H    | R7       |     | H    | G2     |
| 18  | -    | CLK-     | 39  | L    | B1       | 55  | L    | G6     |
|     |      |          |     | H    | R6       |     | H    | G1     |
| 19  | -    | GND_LVDS | 40  | L    | B2       | 56  | L    | G7     |
|     |      |          |     | H    | R5       |     | H    | G0     |
| 20  | -    | D0+      | 41  | L    | B3       | 57  | -    | GND    |
|     |      |          |     | H    | R4       |     | 58   | -      |
| 21  | -    | D0-      | 42  | L    | B4       | 59  |      | -      |
|     |      |          |     | H    | R3       |     | 60   | L      |
|     |      |          |     |      |          | 61  |      | H      |
|     |      |          |     |      |          |     | 62   | L      |
|     |      |          |     |      |          | 63  |      | H      |
|     |      |          |     |      |          |     | 64   | L      |
|     |      |          |     |      |          | 64  |      | H      |
|     |      |          |     |      |          |     | 64   | L      |
|     |      |          |     |      |          | 64  |      | H      |
|     |      |          |     |      |          |     | 64   | L      |
|     |      |          |     |      |          | 64  |      | H      |

**TERMINAL FUNCTIONS**

| NAME                             | I/O          | DESCRIPTION   |
|----------------------------------|--------------|---|
| D0+, D0–                         | SubLVDS in   | SubLVDS Data Link (active during normal operation)  |
| D1+, D1–                         |              | SubLVDS Data Link (active during normal operation when LS0 = high and LS1 = low, or LS0 = low and LS1=high; high impedance if LS0 = LS1 = low); input can be left open if unused  |
| D2+, D2–                         |              | SubLVDS Data Link (active during normal operation when LS0 = low and LS1 = high, high-impedance when LS1 = low); input can be left open if unused   |
| CLK+, CLK–                       |              | SubLVDS Input Pixel Clock; Polarity is fixed.   |
| R0–R7                            | CMOS out     | Red Pixel Data (8); pin assignment depends on SWAP pin setting  |
| G0–G7                            |              | Green Pixel Data (8); pin assignment depends on SWAP pin setting  |
| B0–B7                            |              | Blue Pixel Data (8); pin assignment depends on SWAP pin setting   |
| HS                               |              | Horizontal Sync   |
| VS                               |              | Vertical Sync   |
| DE                               |              | Data Enable   |
| PCLK                             |              | Output Pixel Clock; rising or falling clock polarity is selected by control input CPOL  |
| LS0, LS1                         | CMOS in      | Link Select (Determines active SubLVDS Data Links and PLL Range) See <a href="#">Table 2</a>  |
| RXEN                             |              | Disables the CMOS Drivers and Turns Off the PLL, putting device in shutdown mode<br>1 – Receiver enabled<br>0 – Receiver disabled (Shutdown)<br><br>Note: RXEN input incorporates glitch suppression logic to avoid unwanted switching. The input must be pulled low for longer than 10µs continuously to force the receiver to enter Shutdown. The input must be pulled high for at least 10µs continuously to activate the receiver. An input pulse shorter than 5µs will be interpreted as glitch and becomes ignored. At power up, the receiver is enabled immediately if RXEN=H and disabled if RXEN=L |
| CPOL                             |              | Output Clock Polarity Selection<br>0 – rising edge clocking<br>1 – falling edge clocking  |
| SWAP                             |              | Bus Swap swaps the bus pins to allow device placement on top or bottom of PCB. See pinout drawing for pin assignments.<br>0 – data output from R7...B0<br>1 – data output from B0...R7  |
| F/S                              |              | CMOS bus rise time select<br>1 – fast output rise time<br>0 – slow output rise time   |
| CPE                              |              | CMOS out<br>Channel Parity Error<br>This output indicates the detection of a parity error by generating an output high-pulse for half of a PCLK clock cycle; this allows counting parity errors with a simple counter.<br>0 – no error<br>high-pulse – bit error detected   |
| V <sub>DD</sub>                  | Power Supply | Supply Voltage  |
| V <sub>DD_IO</sub>               |              | RGB interface supply voltage  |
| GND                              |              | Supply Ground   |
| V <sub>DDL</sub> V <sub>DS</sub> |              | SubLVDS I/O supply Voltage  |
| GND <sub>LVDS</sub>              |              | SubLVDS Ground  |
| V <sub>DD</sub> PLL <sub>A</sub> |              | PLL analog supply Voltage   |
| GND <sub>PLL</sub> <sub>A</sub>  |              | PLL analog GND  |
| V <sub>DD</sub> PLL <sub>D</sub> |              | PLL digital supply Voltage  |
| GND <sub>PLL</sub> <sub>D</sub>  |              | PLL digital GND   |

## FUNCTIONAL DESCRIPTION

### Deserialization Modes

The SN65LVDS314 receiver has three modes of operation controlled by link-select pins LS0 and LS1. [Table 2](#) shows the deserializer modes of operation.

**Table 2. Logic Table: Link Select Operating Modes**

| LS1 | LS0 | Mode of Operation |  | Data Links Status             |
|-----|-----|-------------------|--|-------------------------------|
| 0   | 0   | 1ChM              | 1-channel mode (30-bit serialization rate) | D0 active;<br>D1, D2 disabled |
| 0   | 1   | 2ChM              | 2-channel mode (15-bit serialization rate) | D0, D1 active;<br>D2 disabled |
| 1   | 0   | 3ChM              | 3-channel mode (10-bit serialization rate) | D0, D1, D2 active             |
| 1   | 1   | Reserved          |  | Reserved                      |

### 1-Channel Mode

While LS0 and LS1 are held low, the SN65LVDS314 receives payload data over a single SubLVDS data pair, D0. The PLL locks to the SubLVDS clock input and internally multiplies the clock by a factor of 30. The internal high speed clock is used to shift in the data payload on D0 and to deserialize 30 bits of data. [Figure 3](#) illustrates the timing and the mapping of the data payload into the 30-bit frame. The internal high speed clock is divided by a factor of 30 to recreate the pixel clock and the data payload with the pixel clock is presented on the output bus. The reserved bits and parity bit are not output. While in this mode, the PLL can lock to a clock that is in the range of 4 MHz through 15 MHz. This mode is intended for smaller video display formats that do not need the full bandwidth capabilities of the SN65LVDS314.



**Figure 3. Data and Clock Input in 1-ChM (LS0 and LS1 = low)**

### 2-Channel Mode

While LS0 is held high and LS1 is held low, the SN65LVDS314 receives payload data over two SubLVDS data pairs, D0 and D1. The PLL locks to the SubLVDS clock input and internally multiplies the clock by a factor of 15. The internal high speed clock is used to shift in the data payload on D0 and D1 and to deserialize 15 bits of data from each pair. [Figure 4](#) illustrates the timing and the mapping of the data payload into the 30-bit frame. The internal high speed clock is divided by a factor of 15 to recreate the pixel clock, and the data payload with pixel clock is presented on the output bus. The reserved bits and parity bit are not output. While in this mode the PLL can lock to a clock that is in the range of 8 MHz through 30 MHz.



**Figure 4. Data and Clock Input in 2-ChM (LS0 = high; LS1 = low)**

### 3-Channel Mode

While LS0 is held low and LS1 is held high the SN65LVDS314 receives payload data over three SubLVDS data pairs: D0, D1, and D2. The PLL locks to the SubLVDS clock input and internally multiplies the clock by a factor of 10. The internal high speed clock is used to shift in the data payload on D0, D1, and D2, and to deserialize 10 bits of data from each pair. Figure 5 illustrates the timing and the mapping of the data payload into the 30-bit frame. While in this mode the PLL can lock to a clock that is in the range of 20 MHz through 65 MHz.

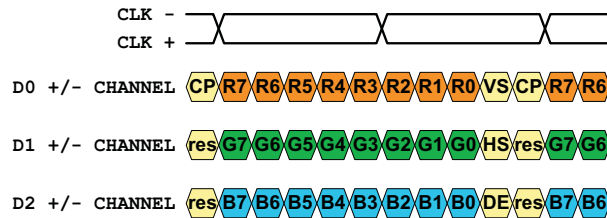


Figure 5. Data and Clock Input in 3-ChM (LS0 = low; LS1 = high)

### POWERDOWN MODES

The SN65LVDS314 Receiver has two powerdown modes to facilitate efficient power management.

#### SHUTDOWN MODE

A low input signal on the RXEN pin puts the SN65LVDS314 into Shutdown mode. This turns off most of the receiver circuitry including the SubLVDS receivers, PLL, and deserializers. The subLVDS differential-input resistance remains 100  $\Omega$ , while any input signal is ignored. All outputs will hold a static output pattern:

$$R[0:7]=G[0:7]=B[0:7]=VS=HS=high; DE=PCLK=low.$$

The current draw in Shutdown mode will be nearly zero if the subLVDS inputs are left open or pulled high.

#### STANDBY MODE

The SN65LVDS314 will enter the Standby mode when the SN65LVDS314 is not in Shutdown mode but the SubLVDS clock-input common-mode voltage is above  $0.9 \times V_{DDLVDs}$ . The CLK input incorporates a pull-up circuit to shift the SubLVDS clock-input common-mode voltage to  $V_{DDLVDs}$  in the absence of an input signal. All circuitry except the SubLVDS clock-input Standby monitor is shut down. The SN65LVDS314 will also enter Standby mode when the input clock frequency on the CLK input is less than 500 kHz. The SubLVDS input resistance remains 100  $\Omega$  while any input signal on the data inputs D0, D1, and D2 becomes ignored. All outputs will hold a static output pattern:

$$R[0:7]=G[0:7]=B[0:7]=VS=HS=high; DE=PCLK=low.$$

The current drawn in Standby mode will be very low.

### ACTIVE MODES

A high input signal on RXEN combined with a CLK input signal switching faster than 3 MHz and  $V_{ICM}$  smaller than 1.3 V force the SN65LVDS314 into Active mode. Current consumption in active mode depends on operating frequency and the number of data transitions in the data payload. CLK-input frequencies between 3 MHz and 4 MHz activate the device but proper PLL functionality is not secured. It is not recommended to operate the SN65LVDS314 in active mode at CLK frequencies below 4 MHz.

#### ACQUIRE MODE (PLL Approaches Lock)

When the SN65LVDS314 is enabled and a SubLVDS clock input present, the PLL will pursue lock to the input clock. While the PLL pursues lock the output data bus will hold a static output pattern:

$$R[0:7]=G[0:7]=B[0:7]=VS=HS=high; DE=PCLK=low.$$

# SN65LVDS314

SLLSE98A – AUGUST 2012 – REVISED SEPTEMBER 2012

www.ti.com

For proper device operation, the pixel clock frequency must fall within the valid  $f_{PCLK}$  range specified under recommended operating conditions. If the pixel clock frequency is larger than 3 MHz but smaller than  $f_{PCLK(min)}$ , the SN65LVDS314 PLL is enabled. Under such conditions, it is possible for the PLL to lock temporarily to the pixel clock, causing the PLL monitor to release the device into active receive mode. If this happens, the PLL may or may not be properly locked to the pixel clock input, potentially causing data errors, frequency oscillation, and PLL deadlock (loss of VCO oscillation).

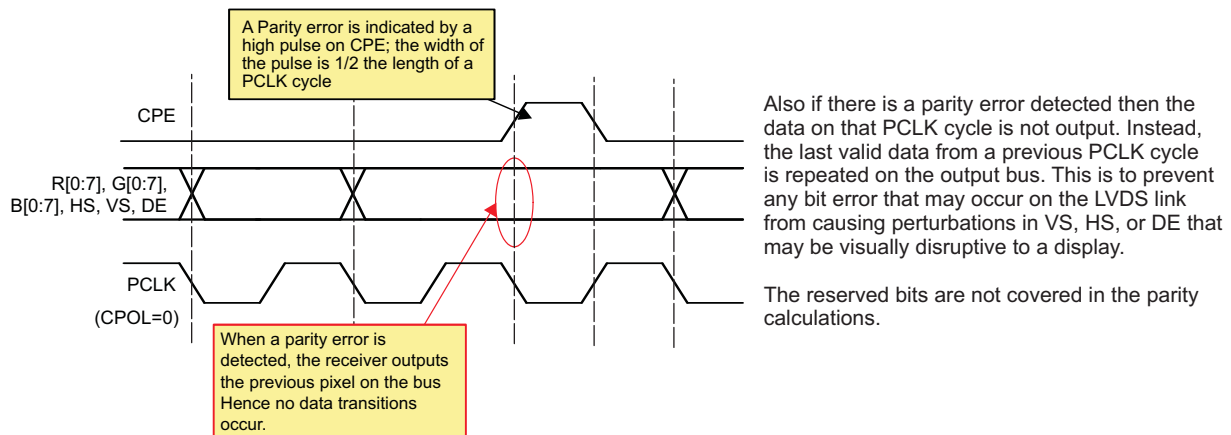
## RECEIVE MODE

After the PLL achieves lock the device enters the normal receive mode. The output data bus presents the de-serialized data. The PCLK output pin outputs the recovered pixel clock.

## PARITY ERROR DETECTION AND HANDLING

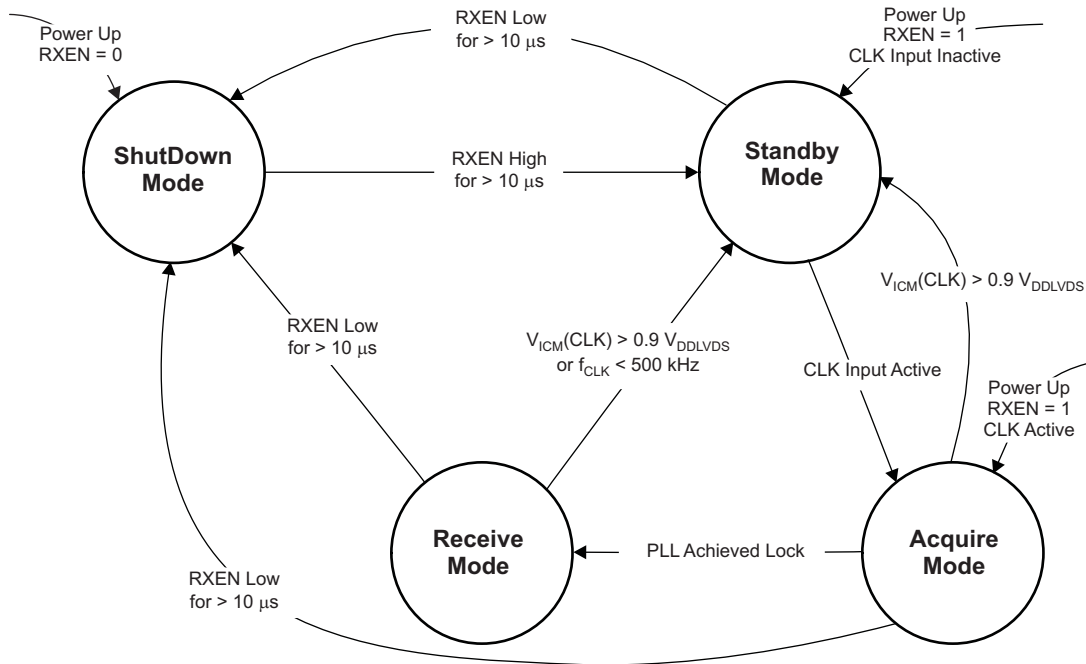
The SN65LVDS314 receiver performs error checking on the basis of a parity bit that is transmitted across the subLVDS interface from the transmitting device. Once the SN65LVDS314 detects the presence of the clock and the PLL has locked onto PCLK, then the parity is checked. Parity-error detection ensures detection of all single bit errors in one pixel and 50% of all multi-bit errors.

The parity bit covers the 27 bit data payload consisting of 24 bits of pixel data plus VS, HS, and DE. Odd Parity bit signalling is used. The parity error is output on the CPE pin. If the sum of the 27 data bits and the parity bit result in an odd number, the receive data are assumed to be valid. The CPE output will be held low. If the sum equals an even number, parity error is declared. The CPE output will indicate high for half a PCLK period. The CPE output will be set with the data bit transition and cleared after 1/2 the data bit time. This allows counting every detected parity error with a simple counter connected to CPE.



## STATUS DETECT AND OPERATING MODES FLOW DIAGRAM

The SN65LVDS314 switches between the power saving and active modes in the following way:



**Table 3. Status Detect and Operating Modes Descriptions**

| Mode          | Characteristics   | Conditions   |
|---------------|---|--|
| Shutdown Mode | Least amount of power consumption (most circuitry turned off); All outputs held static:<br>R[0:7]=G[0:7]=B[0:7]=VS=HS=high DE=PCLK=low;                             | RXEN is set low for longer than 10μs <sup>(1)</sup> <sup>(2)</sup>   |
| Standby Mode  | Low power consumption (Standby monitor circuit active; PLL is shutdown to conserve power); All outputs held static:<br>R[0:7]=G[0:7]=B[0:7]=VS=HS=high DE=PCLK=low; | RXEN is high for longer than 10 μs, and both CLK input common-mode $V_{ICM(CLK)}$ above $0.9 \times V_{DDLVDs}$ , or CLK input floating <sup>(2)</sup> |
| Acquire Mode  | PLL pursues lock; All outputs held static:<br>R[0:7]=G[0:7]=B[0:7]=VS=HS=high DE=PCLK=low;  | RXEN is high; CLK input monitor detected clock input common mode and woke up receiver out of Standby mode  |
| Receive Mode  | Data transfer (normal operation); receiver deserializes data and provides data on parallel output   | RXEN is high and PLL is locked to incoming clock   |

- (1) In Shutdown Mode, all SN65LVDS314 internal switching circuits (e.g., PLL, serializer, etc.) are turned off to minimize power consumption. The input stage of any input pin remains active.
- (2) Leaving CMOS control inputs unconnected can cause random noise to toggle the input stage and potentially harm the device. All CMOS inputs must be tied to a valid logic level  $V_{IL}$  or  $V_{IH}$  during Shutdown or Standby Mode. Exceptions are the subLVDS inputs CLK and Dx, which can be left unconnected while not in use.

**Table 4. Operating Mode Transitions**

| MODE TRANSITION            | USE CASE  | TRANSITION SPECIFICS  |
|----------------------------|---|---|
| Shutdown → Standby         | Drive RXEN high to enable receiver  | <ol style="list-style-type: none"> <li>1. RXEN high &gt; 10 <math>\mu</math>s</li> <li>2. Receiver enters standby mode               <ol style="list-style-type: none"> <li>a. R[0:7]=G[0:7]=B[0:7]=VS=HS remain high and DE=PCLK low</li> <li>b. Receiver activates clock input monitor</li> </ol> </li> </ol>   |
| Standby → Acquire          | Transmitter activity detected   | <ol style="list-style-type: none"> <li>1. CLK input monitor detects clock input activity</li> <li>2. Outputs remain static</li> <li>3. PLL circuit is enabled</li> </ol>  |
| Acquire → Receive          | Link is ready to receive data   | <ol style="list-style-type: none"> <li>1. PLL is active and approaches lock</li> <li>2. PLL achieves lock within <math>t_{\text{wake up}}</math></li> <li>3. D1, D2, and/or D3 become active depending on LS0 and LS1 selection</li> <li>4. First Data word was recovered</li> <li>5. Parallel output bus turns on switching from static output pattern to output first valid data word</li> </ol>  |
| Receive → Standby          | Transmitter requested to enter Standby mode by input common mode voltage $V_{\text{ICM}} > 0.9 V_{\text{DDL VDS}}$ (e.g. transmitter output clock stops or enters high-impedance state) | <ol style="list-style-type: none"> <li>1. Receiver disables outputs within <math>t_{\text{standby}}</math></li> <li>2. RX Input monitor detects <math>V_{\text{ICM}} &gt; 0.9 V_{\text{DDL VDS}}</math> within <math>t_{\text{standby}}</math></li> <li>3. R[0:7]=G[0:7]=B[0:7]=VS=HS transition to high and DE=PCLK to low on next falling PLL clock edge</li> <li>4. PLL shuts down. Clock activity input monitor remains active</li> </ol> |
| Receive/Standby → Shutdown | Turn off Receiver   | <ol style="list-style-type: none"> <li>1. RXEN pulled low for &gt; <math>t_{\text{pwr dn}}</math></li> <li>2. R[0:7]=G[0:7]=B[0:7]=VS=HS remain static high or transition to static high and DE=PCLK remain or transition to static low</li> <li>3. Most IC circuitry is shut down for least power consumption</li> </ol>   |

### RGB Signaling Level

The signaling level of the R[0:7], G[0:7], B[0:7], HS, VS, DE, and PCLK outputs of the SN65LVDS314 can be configured to be between 1.8 V and 3.3 V (nominal), depending on the voltage applied to the VDD\_IO terminals. This provides compatibility with LCD drivers with interface voltages between 1.8 V and 3.3 V without the need for external level shifters.

**ABSOLUTE MAXIMUM RATINGS<sup>(1)</sup>**

|  |   | VALUE                        | UNIT |
|--|---|------------------------------|------|
| Supply voltage range, $V_{DD}$ <sup>(2)</sup> , $V_{DDPLLA}$ , $V_{DDPLLD}$ , $V_{DDLVDs}$ |   | –0.3 to 2.175                | V    |
| Supply voltage range, $V_{DD\_IO}$   |   | –0.3 to 3.6                  | V    |
| Voltage range at any input or output terminal  | When $V_{DDx} > 0$ V                          | –0.5 to 2.175                | V    |
|  | When $V_{DDx} \leq 0$ V                       | –0.5 to $V_{DD} + 2.175$     |      |
| Electrostatic discharge  | Human Body Model <sup>(3)</sup> (all Pins)    | ±4                           | kV   |
|  | Charged-Device Mode <sup>(4)</sup> (all Pins) | ±1000                        | V    |
|  | Machine Model <sup>(5)</sup> (all pins)       | ±200                         |      |
| Continuous power dissipation   |   | See Dissipation Rating Table |      |
| Output current, $I_O$  |   | ±5                           | mA   |
| Storage temperature, $T_{STG}$   |   | –65 to 150                   | °C   |
| Maximum junction temperature, $T_J$  |   | 125                          | °C   |

- (1) Stresses beyond those listed under *absolute maximum ratings* may cause permanent damage to the device. These are stress ratings only and functional operation of the device at these or any other conditions beyond those indicated under *recommended operating conditions* is not implied. Exposure to absolute maximum-rated conditions for extended periods may affect device reliability.
- (2) All voltage values are with respect to the GND terminals
- (3) In accordance with JEDEC Standard 22, Test Method A114-B
- (4) In accordance with JEDEC Standard 22, Test Method C101
- (5) In accordance with JEDEC Standard 22, Test Method A115-A

**THERMAL INFORMATION**

| THERMAL METRIC <sup>(1)</sup> |   | SN65LVDS314 | UNITS |
|-------------------------------|---|-------------|-------|
|                               |   | RSK         |       |
|                               |   | 64 PINS     |       |
| $\theta_{JA}$                 | Junction-to-ambient thermal resistance <sup>(2)</sup>       | 31.7        | °C/W  |
| $\theta_{JCTop}$              | Junction-to-case (top) thermal resistance <sup>(3)</sup>    | 20          |       |
| $\theta_{JB}$                 | Junction-to-board thermal resistance <sup>(4)</sup>         | 9.9         |       |
| $\psi_{JT}$                   | Junction-to-top characterization parameter <sup>(5)</sup>   | 0.3         |       |
| $\psi_{JB}$                   | Junction-to-board characterization parameter <sup>(6)</sup> | 9.9         |       |
| $\theta_{JCbott}$             | Junction-to-case (bottom) thermal resistance <sup>(7)</sup> | 2.4         |       |

- (1) For more information about traditional and new thermal metrics, see the *IC Package Thermal Metrics* application report, [SPRA953](#).
- (2) The junction-to-ambient thermal resistance under natural convection is obtained in a simulation on a JEDEC-standard, high-K board, as specified in JESD51-7, in an environment described in JESD51-2a.
- (3) The junction-to-case (top) thermal resistance is obtained by simulating a cold plate test on the package top. No specific JEDEC-standard test exists, but a close description can be found in the ANSI SEMI standard G30-88.
- (4) The junction-to-board thermal resistance is obtained by simulating in an environment with a ring cold plate fixture to control the PCB temperature, as described in JESD51-8.
- (5) The junction-to-top characterization parameter,  $\psi_{JT}$ , estimates the junction temperature of a device in a real system and is extracted from the simulation data for obtaining  $\theta_{JA}$ , using a procedure described in JESD51-2a (sections 6 and 7).
- (6) The junction-to-board characterization parameter,  $\psi_{JB}$ , estimates the junction temperature of a device in a real system and is extracted from the simulation data for obtaining  $\theta_{JA}$ , using a procedure described in JESD51-2a (sections 6 and 7).
- (7) The junction-to-case (bottom) thermal resistance is obtained by simulating a cold plate test on the exposed (power) pad. No specific JEDEC standard test exists, but a close description can be found in the ANSI SEMI standard G30-88.

**DEVICE POWER DISSIPATION**

| PARAMETER                      | TEST CONDITIONS   |                     | TYP  | MAX   | UNIT |
|--------------------------------|---|---------------------|------|-------|------|
| $P_D$ Device Power Dissipation | $V_{DDx} = 1.8$ V, $T_A = 25^\circ\text{C}$ , all outputs terminated with 10 pF                                   | $f_{CLK}$ at 4 MHz  | 12.8 |       | mW   |
|                                |   | $f_{CLK}$ at 65 MHz | 59.2 |       |      |
|                                | $V_{DD} = V_{DDPLLA} = V_{DDPLLD} = V_{DDLVDs} = 1.95$ V, $V_{DD\_IO} = 3.6$ V, all outputs terminated with 10 pF | $f_{CLK}$ at 4 MHz  |      | 41    | mW   |
|                                |   | $f_{CLK}$ at 65 MHz |      | 261.9 |      |

# SN65LVDS314

SLLSE98A – AUGUST 2012 – REVISED SEPTEMBER 2012

[www.ti.com](http://www.ti.com)

## RECOMMENDED OPERATING CONDITIONS<sup>(1)</sup>

|  |   | MIN  | TYP                     | MAX                 | UNIT |    |
|--|---|--|-------------------------|---------------------|------|----|
| $V_{DD}$<br>$V_{DDPLLA}$<br>$V_{DDPLLD}$<br>$V_{DDLVDs}$ | Supply voltages   | 1.65   | 1.8                     | 1.95                | V    |    |
| $V_{DD\_IO}$   | Supply voltage for CMOS outputs   | 1.65   |                         | 3.6                 | V    |    |
| $V_{DDn(PP)}$  | Supply voltage noise magnitude<br>50MHz (all supplies)                    | Test set-up see <a href="#">Figure 7</a>   |                         |                     | mV   |    |
|  |   | $f_{CLK} \leq 50\text{MHz}$ ; $f(\text{noise}) = 1\text{Hz to } 2\text{GHz}$                                       |                         | 100                 |      |    |
|  |   | $f_{CLK} > 50\text{MHz}$ ; $f(\text{noise}) = 1\text{Hz to } 1\text{MHz}$  |                         | 100                 |      |    |
|  |   |  |                         | 40                  |      |    |
| $T_A$  | Operating free-air temperature  | -40  |                         | 85                  | °C   |    |
| $T_C$  | Case temperature  |  |                         | 93.1                | °C   |    |
| <b>CLK+ and CLK-</b>                                     |   |  |                         |                     |      |    |
| $f_{CLK\pm}$   | Input Pixel clock frequency   | 1-Channel receive mode, see <a href="#">Figure 3</a>   | 4                       | 15                  | MHz  |    |
|  |   | 2-Channel receive mode, see <a href="#">Figure 4</a>   | 8                       | 30                  |      |    |
|  |   | 3-Channel receive mode, see <a href="#">Figure 5</a>   | 20                      | 65                  |      |    |
|  |   | Standby mode <sup>(2)</sup> , See <a href="#">Figure 16</a>  |                         | 500                 | kHz  |    |
| $t_{DUTCLK}$   | CLK Input Duty Cycle  |  | 35                      | 65                  | %    |    |
| <b>D0+, D0-, D1+, D1-, D2+, D2-, CLK+, and CLK-</b>      |   |  |                         |                     |      |    |
| $ V_{ID} $   | Magnitude of differential input voltage                                   | $ V_{D0+}-V_{D0-} $ , $ V_{D1+}-V_{D1-} $ , $ V_{D2+}-V_{D2-} $ ,<br>$ V_{CLK+}-V_{CLK-} $ during normal operation |                         | 70                  | 200  | mV |
| $V_{ICM}$  | Input Voltage Common Mode Range   | Receive or Acquire mode  | 0.6                     | 1.2                 | V    |    |
|  |   | Stand-by mode  | $0.9 \times V_{DDLVDs}$ |                     |      |    |
| $\Delta V_{ICM}$   | Input Voltage Common Mode Variation between all SubLVDS inputs            | $V_{ICM(n)} - V_{ICM(m)}$ with $n=D0, D1, D2$ , or CLK and $m=D0, D1, D2$ , or CLK                                 |                         | -100                | 100  | mV |
| $\Delta V_{ID}$  | Differential Input Voltage Amplitude Variation between all SubLVDS inputs | $V_{ID(n)} - V_{ID(m)}$ with $n=D0, D1, D2$ , or CLK and $m=D0, D1, D2$ , or CLK                                   |                         | -10                 | 10   | %  |
| $t_{R/F}$  | Input Rise and Fall Time  | RXEN at $V_{DD}$ ; see figure 10   |                         |                     | 800  | ps |
| $\Delta t_{R/F}$   | Input Rise or Fall Time mismatch between all SubLVDS inputs               | $t_{R(n)} - t_{R(m)}$ and $t_{F(n)} - t_{F(m)}$ with $n=D0, D1, D2$ , or CLK and $m=D0, D1, D2$ , or CLK           |                         | -100                | 100  | ps |
| <b>LS0, LS1, CPOL, SWAP, RXEN, F/S</b>                   |   |  |                         |                     |      |    |
| $V_{ICMOSH}$   | High-level input voltage  | $0.7 \times V_{DD}$  |                         | $V_{DD}$            | V    |    |
| $V_{ICMOSL}$   | Low-level input voltage   | 0  |                         | $0.3 \times V_{DD}$ | V    |    |
| $t_{inRXEN}$   | RXEN input pulse duration   | 10   |                         |                     | µs   |    |
| <b>R[7:0], G[7:0], B[7:0], VS, HS, DE, PCLK, CPE</b>     |   |  |                         |                     |      |    |
| $C_L$  | Output load capacitance   |  |                         | 10                  | pF   |    |

(1) Unused single-ended inputs must be held high or low to prevent them from floating.

(2) PCLK input frequencies lower than 500 kHz force the SN65LVDS314 into standby mode. Input frequencies between 500 kHz and 3 MHz may or may not activate the SN65LVDS314. Input frequencies beyond 3 MHz activate the SN65LVDS314. Input frequencies between 500 kHz and 4 MHz are not recommended, and can cause PLL malfunction.

**DEVICE ELECTRICAL CHARACTERISTICS**

over recommended operating conditions (unless otherwise noted)

| PARAMETER   | TEST CONDITIONS            |   | MIN                                   | TYP <sup>(1)</sup>         | MAX <sup>(2)</sup> | UNIT |    |
|---|----------------------------|---|---------------------------------------|----------------------------|--------------------|------|----|
| I <sub>DD</sub><br>Total<br>Average<br>Supply<br>Current  | 1ChM                       | Typical power test pattern (see Table 6);<br>V <sub>ID</sub> = 70 mV,<br>All CMOS outputs terminated with 10 pF;<br>F/S at GND and RXEN at V <sub>DD</sub> ;<br>V <sub>IH</sub> = V <sub>DD</sub> , V <sub>IL</sub> = 0 V;<br>V <sub>DD</sub> = V <sub>DDPLLA</sub> = V <sub>DDPLLD</sub> = V <sub>DLLVDS</sub> | f <sub>PCLK</sub> = 4 MHz             | V <sub>DD_IO</sub> = 1.8 V | 7.1                | mA   |    |
|   |                            |   |                                       | V <sub>DD_IO</sub> = 2.5 V | 8.2                |      |    |
|   |                            |   |                                       | V <sub>DD_IO</sub> = 3.3 V | 10.3               |      |    |
|   |                            |   | f <sub>PCLK</sub> = 15 MHz            | V <sub>DD_IO</sub> = 1.8 V | 15.3               | mA   |    |
|   |                            |   |                                       | V <sub>DD_IO</sub> = 2.5 V | 17.4               |      |    |
|   |                            |   |                                       | V <sub>DD_IO</sub> = 3.3 V | 21                 |      |    |
|   | 2ChM                       | Typical power test pattern (see Table 7);<br>V <sub>ID</sub> = 70 mV,<br>All CMOS outputs terminated with 10 pF;<br>F/S at GND and RXEN at V <sub>DD</sub> ;<br>V <sub>IH</sub> = V <sub>DD</sub> , V <sub>IL</sub> = 0 V;<br>V <sub>DD</sub> = V <sub>DDPLLA</sub> = V <sub>DDPLLD</sub> = V <sub>DLLVDS</sub> | f <sub>PCLK</sub> = 4 MHz             | V <sub>DD_IO</sub> = 1.8 V | 8.9                | 12.3 | mA |
|   |                            |   |                                       | V <sub>DD_IO</sub> = 2.5 V | 10.7               | 12.8 |    |
|   |                            |   |                                       | V <sub>DD_IO</sub> = 3.3 V | 13.5               | 16   |    |
|   |                            |   | f <sub>PCLK</sub> = 15 MHz            | V <sub>DD_IO</sub> = 1.8 V | 19.3               | 25   | mA |
|   |                            |   |                                       | V <sub>DD_IO</sub> = 2.5 V | 23.3               | 28.6 |    |
|   |                            |   |                                       | V <sub>DD_IO</sub> = 3.3 V | 28.4               | 35.2 |    |
|   | 3ChM                       | Typical power test pattern (see Table 8);<br>V <sub>ID</sub> = 70 mV,<br>All CMOS outputs terminated with 10 pF;<br>F/S at GND and RXEN at V <sub>DD</sub> ;<br>V <sub>IH</sub> = V <sub>DD</sub> , V <sub>IL</sub> = 0 V;<br>V <sub>DD</sub> = V <sub>DDPLLA</sub> = V <sub>DDPLLD</sub> = V <sub>DLLVDS</sub> | f <sub>PCLK</sub> = 8 MHz             | V <sub>DD_IO</sub> = 1.8 V | 9.7                | mA   |    |
|   |                            |   |                                       | V <sub>DD_IO</sub> = 2.5 V | 11.3               |      |    |
|   |                            |   |                                       | V <sub>DD_IO</sub> = 3.3 V | 14                 |      |    |
|   |                            |   | f <sub>PCLK</sub> = 30 MHz            | V <sub>DD_IO</sub> = 1.8 V | 20.4               | mA   |    |
|   |                            |   |                                       | V <sub>DD_IO</sub> = 2.5 V | 24.3               |      |    |
|   |                            |   |                                       | V <sub>DD_IO</sub> = 3.3 V | 29.1               |      |    |
|   |                            | Alternating 1010 Test pattern (see Table 9);<br>All CMOS outputs terminated with 10 pF;<br>F/S and RXEN at V <sub>DD</sub> ; V <sub>IH</sub> = V <sub>DD</sub> , V <sub>IL</sub> = 0 V;<br>V <sub>DD</sub> = V <sub>DDPLLA</sub> = V <sub>DDPLLD</sub> = V <sub>DLLVDS</sub>                                    | f <sub>PCLK</sub> = 8 MHz             | V <sub>DD_IO</sub> = 1.8 V | 12.9               | 17.3 | mA |
|   |                            |   |                                       | V <sub>DD_IO</sub> = 2.5 V | 15.6               | 19.3 |    |
|   |                            |   |                                       | V <sub>DD_IO</sub> = 3.3 V | 20.3               | 26.9 |    |
|   |                            |   | f <sub>PCLK</sub> = 30 MHz            | V <sub>DD_IO</sub> = 1.8 V | 30.4               | 40.4 | mA |
|   |                            |   |                                       | V <sub>DD_IO</sub> = 2.5 V | 37.2               | 48.3 |    |
|   |                            |   |                                       | V <sub>DD_IO</sub> = 3.3 V | 45.9               | 61.7 |    |
| Alternating 1010 Test pattern (see Table 9);<br>All CMOS outputs terminated with 10 pF;<br>F/S and RXEN at V <sub>DD</sub> ; V <sub>IH</sub> = V <sub>DD</sub> , V <sub>IL</sub> = 0 V;<br>V <sub>DD</sub> = V <sub>DDPLLA</sub> = V <sub>DDPLLD</sub> = V <sub>DLLVDS</sub>  | f <sub>PCLK</sub> = 20 MHz | V <sub>DD_IO</sub> = 1.8 V  | 15.5                                  | mA                         |                    |      |    |
|   |                            | V <sub>DD_IO</sub> = 2.5 V  | 19                                    |                            |                    |      |    |
|   |                            | V <sub>DD_IO</sub> = 3.3 V  | 23.5                                  |                            |                    |      |    |
|   |                            | V <sub>DD_IO</sub> = 1.8 V  | 32.9                                  |                            |                    |      |    |
|   |                            | V <sub>DD_IO</sub> = 2.5 V  | 39.9                                  |                            |                    |      |    |
|   |                            | V <sub>DD_IO</sub> = 3.3 V  | 48.7                                  |                            |                    |      |    |
|   | f <sub>PCLK</sub> = 65 MHz | V <sub>DD_IO</sub> = 1.8 V  | 21.4                                  | 29.7                       | mA                 |      |    |
|   |                            | V <sub>DD_IO</sub> = 2.5 V  | 26.4                                  | 33.7                       |                    |      |    |
|   |                            | V <sub>DD_IO</sub> = 3.3 V  | 33.1                                  | 41.3                       |                    |      |    |
|   |                            | V <sub>DD_IO</sub> = 1.8 V  | 49.9                                  | 66.9                       |                    |      |    |
|   |                            | V <sub>DD_IO</sub> = 2.5 V  | 62.5                                  | 80.3                       |                    |      |    |
|   |                            | V <sub>DD_IO</sub> = 3.3 V  | 77.9                                  | 102.3                      |                    |      |    |
| CLK and D[0:2] inputs are left open;<br>All control inputs held static high or low;<br>All CMOS outputs terminated with 10 pF;<br>V <sub>IH</sub> = V <sub>DD</sub> , V <sub>IL</sub> = 0V; V <sub>DD</sub> = V <sub>DDPLLA</sub> = V <sub>DDPLLD</sub> = V <sub>DLLVDS</sub> |                            |   | Standby mode; RXEN = V <sub>IH</sub>  |                            | 30                 | 80   | μA |
|   |                            |   | Shutdown mode; RXEN = V <sub>IL</sub> |                            | 0.3                | 6    | μA |

 (1) All typical values are at 25°C with V<sub>DD</sub> = V<sub>DDPLLA</sub> = V<sub>DDPLLD</sub> = V<sub>DLLVDS</sub> = 1.8 V.

 (2) All max values are at the worst-case process corner, voltage, and temperature. The V<sub>DD\_IO</sub> voltage is the described voltage + 10%.

# SN65LVDS314

SLLSE98A – AUGUST 2012 – REVISED SEPTEMBER 2012

[www.ti.com](http://www.ti.com)

## INPUT ELECTRICAL CHARACTERISTICS

over operating free-air temperature range (unless otherwise noted)

| PARAMETER   |   | TEST CONDITIONS  | MIN                 | TYP <sup>(1)</sup> | MAX                    | UNIT |
|---|---|--|---------------------|--------------------|------------------------|------|
| <b>D0+, D0-, D1+, D1-, D2+, D2-, CLK+, and CLK-</b> |   |  |                     |                    |                        |      |
| V <sub>thstby</sub>                                 | Input voltage common mode threshold to switch between receive/acquire mode and standby mode | RXEN at V <sub>DD</sub>  | 1.3                 |                    | 0.9×V <sub>DDLVD</sub> | V    |
| V <sub>THL</sub>                                    | Low-level differential input voltage threshold  | V <sub>D0+–V<sub>D0–</sub></sub> , V <sub>D1+–V<sub>D1–</sub></sub> , V <sub>D2+–V<sub>D2–</sub></sub> ,<br>V <sub>CLK+–V<sub>CLK–</sub></sub> | –40                 |                    |                        | mV   |
| V <sub>THH</sub>                                    | High-level differential input voltage threshold   |  |                     |                    |                        | 40   |
| I <sub>I+</sub> , I <sub>I–</sub>                   | Input leakage current   | V <sub>DD</sub> =1.95 V; V <sub>I+</sub> = V <sub>I–</sub> ;<br>V <sub>I</sub> = 0.4 V and V <sub>I</sub> = 1.5 V                              |                     |                    | 75                     | μA   |
| I <sub>OFF</sub>                                    | Power-off input current   | V <sub>DD</sub> =GND; V <sub>I</sub> = 1.5V  |                     |                    | –75                    | μA   |
| R <sub>ID</sub>                                     | Differential input termination resistor value   |  | 78                  | 100                | 122                    | Ω    |
| C <sub>IN</sub>                                     | Input capacitance   | Measured between input terminal and GND  |                     | 1                  |                        | pF   |
| ΔC <sub>IN</sub>                                    | Input capacitance variation   | Within one signal pair   |                     |                    | 0.2                    | pF   |
|   |   | Between all signals  |                     |                    | 1                      |      |
| R <sub>BBDC</sub>                                   | Pull-up resistor for standby detection  |  | 21                  | 30                 | 39                     | kΩ   |
| <b>LS0, LS1, CPOL, SWAP, RXEN, F/S</b>              |   |  |                     |                    |                        |      |
| V <sub>IK</sub>                                     | Input clamp voltage   | I <sub>I</sub> = –18 mA, V <sub>DD</sub> =V <sub>DD</sub> (min)  |                     |                    | –1.2                   | V    |
| I <sub>ICMOS</sub>                                  | Input current <sup>(2)</sup>  | 0 V ≤ V <sub>DD</sub> ≤ 1.95 V; V <sub>I</sub> =GND or V <sub>I</sub> =1.95 V  |                     |                    | 100                    | nA   |
| C <sub>IN</sub>                                     | Input capacitance   |  |                     | 2                  |                        | pF   |
| I <sub>IH</sub>                                     | High-level input current  | V <sub>IN</sub> = 0.7 × V <sub>DD</sub>  | –200                |                    | 200                    | nA   |
| I <sub>IL</sub>                                     | Low-level input current   | V <sub>IN</sub> = 0.3 × V <sub>DD</sub>  | –200                |                    | 200                    |      |
| V <sub>IH</sub>                                     | High-level input voltage  |  | 0.7×V <sub>DD</sub> |                    | V <sub>DD</sub>        | V    |
| V <sub>IL</sub>                                     | Low-level input voltage   |  | 0                   |                    | 0.3×V <sub>DD</sub>    |      |

(1) All typical values are at 25°C and with 1.8 V supply unless otherwise noted.

 (2) Do not leave any CMOS Input unconnected or floating to minimize leakage currents. Every input must be connected to a valid logic level V<sub>IH</sub> or V<sub>OL</sub> while power is supplied to V<sub>DD</sub>.

## OUTPUT ELECTRICAL CHARACTERISTICS

over operating free-air temperature range (unless otherwise noted)

| PARAMETER  |                           | TEST CONDITIONS                                   | MIN                    | TYP | MAX                | UNIT    |
|--|---------------------------|---|------------------------|-----|--------------------|---------|
| <b>R[0:7], G[0:7], B[0:7], VS, HS, DE, PCLK, CPE</b> |                           |   |                        |     |                    |         |
| V <sub>OH</sub>                                      | High-level output voltage | 1-ChM, F/S=L, I <sub>OH</sub> = -250 $\mu$ A      | 0.8xV <sub>DD_IO</sub> |     | V <sub>DD_IO</sub> | V       |
|  |                           | 2-or 3-ChM, F/S=L, I <sub>OH</sub> = -500 $\mu$ A |                        |     |                    |         |
|  |                           | 1-ChM, F/S=H, I <sub>OH</sub> = -500 $\mu$ A      |                        |     |                    |         |
|  |                           | 2- or 3-ChM, F/S=H, I <sub>OH</sub> = -1.33 mA    |                        |     |                    |         |
| V <sub>OL</sub>                                      | Low-level output voltage  | 1-ChM, F/S=L, I <sub>OL</sub> = 250 $\mu$ A       | 0                      |     | 0.5                | V       |
|  |                           | 2- or 3-ChM, F/S=L, I <sub>OL</sub> = 500 $\mu$ A |                        |     |                    |         |
|  |                           | 1-ChM, F/S=H, I <sub>OL</sub> = 500 $\mu$ A       |                        |     |                    |         |
|  |                           | 2- or 3-ChM, F/S=H, I <sub>OL</sub> = 1.33 mA     |                        |     |                    |         |
| I <sub>OH</sub>                                      | High-level output current | 1-ChM, F/S=L                                      |                        |     |                    | $\mu$ A |
|  |                           | 2- or 3-ChM, F/S=L; 1-ChM, F/S=H                  |                        |     |                    |         |
|  |                           | 2- or 3-ChM, F/S=H                                |                        |     |                    |         |
| I <sub>OL</sub>                                      | Low-level output current  | 1-ChM, F/S=L                                      |                        |     |                    | $\mu$ A |
|  |                           | 2- or 3-ChM, F/S=L; 1-ChM, F/S=H                  |                        |     |                    |         |
|  |                           | 2- or 3-ChM, F/S=H                                |                        |     |                    |         |

# SN65LVDS314

SLLSE98A – AUGUST 2012 – REVISED SEPTEMBER 2012

www.ti.com

## SWITCHING CHARACTERISTICS

over recommended operating conditions (unless otherwise noted)

| PARAMETER  | TEST CONDITIONS   | MIN   | TYP <sup>(1)</sup>  | MAX | UNIT                    |                |                |               |
|--|---|---|---|-----|-------------------------|----------------|----------------|---------------|
| <b>D0+, D0-, D1+, D1-, D2+, D2-, CLK+, and CLK-</b>  |   |   |   |     |                         |                |                |               |
| $t_{R/F}$  | Input rise and fall time  | RXEN at $V_{DD}$ ; see figure 6-2   |   |     | 800                     | ps             |                |               |
| $\Delta t_{R/F}$                                     | Input rise or fall time mismatch between all SubLVDS inputs         | $t_{R(n)} - t_{R(m)}$ and $t_{F(n)} - t_{F(m)}$ with $n=D0, D1, D2$ , or CLK and $m=D0, D1, D2$ , or CLK  |   |     | -100                    | 100            | ps             |               |
| <b>R[7:0], G[7:0], B[7:0], VS, HS, DE, PCLK, CPE</b> |   |   |   |     |                         |                |                |               |
| $t_{R/F}$  | Rise and fall time 20%–80% of $V_{DD\_IO}$ <sup>(2)</sup>           | $C_L = 10 \text{ pF}$ <sup>(3)</sup><br>see Figure 9  | 1-channel mode, F/S=L   |     | 8                       | 16             | ns             |               |
|  |   |   | 2-channel mode, F/S=L   |     | 4                       | 8              |                |               |
|  |   |   | 3-channel mode, F/S=L   |     | 4                       | 8              |                |               |
|  |   |   | 1-channel mode, F/S=H   |     | 4                       | 8              |                |               |
|  |   |   | 2-channel mode, F/S=H   |     | 1.3                     | 3              |                |               |
|  |   |   | 3-channel mode, F/S=H   |     | 1.3                     | 3              |                |               |
| $t_{OUTP}$   | PCLK output duty cycle  | 1-channel and 3-channel mode  |   | 45% | 50%                     | 55%            |                |               |
|  |   | CPOL= $V_{IL}$ , 2-channel mode   |   | 48% | 53%                     | 59%            |                |               |
|  |   | CPOL= $V_{IH}$ , 2-channel mode   |   | 41% | 47%                     | 52%            |                |               |
| $t_{OSK}$  | Output skew between PCLK and R[0:7], G[0:7], B[0:7], HS, VS, and DE | see Figure 9  | 1-channel mode, F/S=L   |     | -2                      | 2              | ns             |               |
|  |   |   | 1-channel mode, F/S=H or 2-channel mode, F/S=L or 3-channel mode, F/S=L |     | -1                      | 1              |                |               |
|  |   |   | 2-channel mode, F/S=H or 3-channel mode, F/S=H                          |     | -0.5                    | 0.5            |                |               |
| <b>INPUT TO OUTPUT RESPONSE TIME</b>                 |   |   |   |     |                         |                |                |               |
| $t_{PD(L)}$  | Propagation delay time from CLK+ input to PCLK output               | RXEN at $V_{DD}$ , $V_{IH}=V_{DD}$ , $V_{IL}=GND$ , $C_L=10 \text{ pF}$ , See Figure 14   |   |     | $1.4/f_{PCLK}$          | $1.9/f_{PCLK}$ | $2.5/f_{PCLK}$ | s             |
| $t_{GS}$   | RXEN glitch to suppress pulse width <sup>(4)</sup>                  | $V_{IH}=V_{DD}$ , $V_{IL}=GND$ , RXEN toggles between $V_{IL}$ and $V_{IH}$ ; See Figure 15 and Figure 16   |   |     |                         | 3.8            |                | $\mu\text{s}$ |
| $t_{pwrup}$  | Enable time from power down ( $\uparrow$ RXEN)                      | Time from RXEN pulled high to data outputs enabled and outputs valid data; See Figure 16  |   |     |                         | 2              |                | ms            |
| $t_{pwrdn}$  | Disable time from active mode ( $\downarrow$ RXEN)                  | RXEN is pulled low during receive mode; time measurement until all outputs held static: R[0:7]=G[0:7]=B[0:7]=VS=HS=high, DE=PCLK=low and PLL is Shutdown; See Figure 16   |   |     |                         | 11             |                | $\mu\text{s}$ |
| $t_{wakeup}$   | Enable time from Standby ( $\uparrow$ CLK)                          | RXEN at $V_{DD}$ ; device is in standby; time measurement from CLK input starts switching to PCLK and data outputs enabled and outputting valid data; See Figure 17   |   |     |                         | 2              |                | ms            |
| $t_{standby}$  | Disable time from active mode (CLK transitions to high-impedance)   | RXEN at $V_{DD}$ ; device is receiving data; time measurement from CLK input signal stops (input open or input common mode VICM exceeds threshold voltage $V_{thstby}$ ) until all outputs held static: R[0:7]=G[0:7]=B[0:7]=VS=HS=high, DE=PCLK=low and PLL is Shutdown; See Figure 17 |   |     |                         | 3              |                | $\mu\text{s}$ |
| $f_{BW}$   | PLL bandwidth <sup>(5)</sup>  | Tested from CLK input to PCLK output  | 2-ChM; $f_{PCLK}=22\text{MHz}$  |     | $0.087 \times f_{PCLK}$ |                | MHz            |               |
|  |   |   | 3-ChM; $f_{PCLK}=65\text{MHz}$  |     | $0.075 \times f_{PCLK}$ |                |                |               |

- (1) All typical values are at 25°C and with 1.8 V supply unless otherwise noted.
- (2)  $t_{R/F}$  depends on the F/S setting and the capacitive load connected to each output. Some application information of how to calculate  $t_{R/F}$  based on the output load and how to estimate the timing budget to interconnect to an LCD driver are provided in the application section near the end of this data sheet.
- (3) The output rise and fall time is optimized for an output load of 10 pF. This model does not take into account trace or connector loading, so the actual rise and fall times in different systems will vary.
- (4) The RXEN input incorporates a glitch-suppression logic to disregard short input pulses.  $t_{GS}$  is the duration of either a high-to-low or low-to-high transition that is suppressed.
- (5) When using the SN65LVDS314 receiver in conjunction with the SN65LVDS301 transmitter in one link, the PLL bandwidth of the SN65LVDS314 receiver always exceed the bandwidth of the SN65LVDS301 transmit PLL. This ensures stable PLL tracking under all operating conditions and maximizes the receiver skew margin.

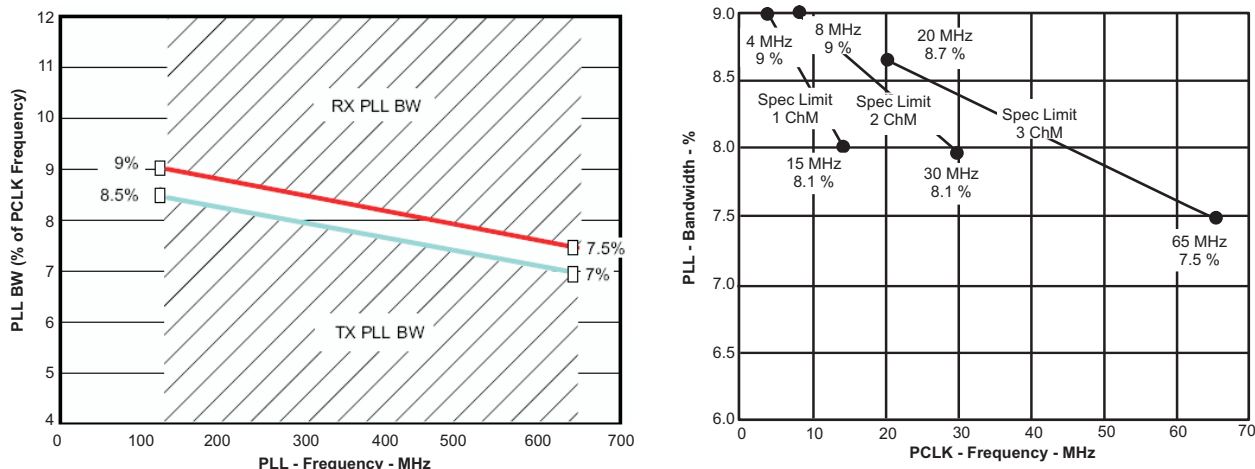


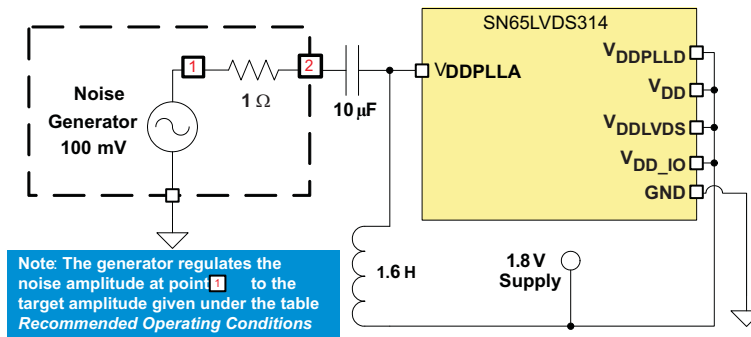
Figure 6. SN65LVDS314 PLL Bandwidth (also showing the SN65LVDS301 PLL bandwidth)

TIMING CHARACTERISTICS

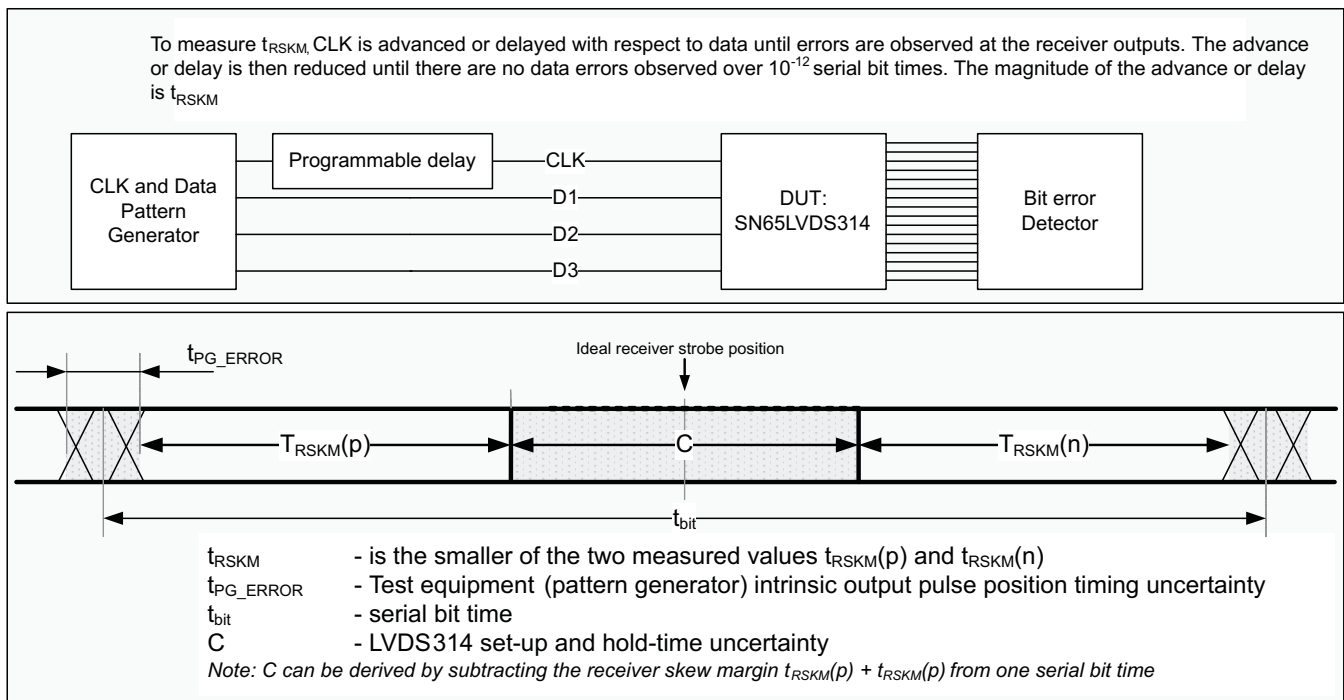
| PARAMETER              | TEST CONDITIONS  | MIN  | MAX   | UNIT |
|------------------------|--|--|---|------|
| $t_{RSKMx}$<br>(1) (2) | 1ChM: $x=0..29$ , $f_{PCLK}=15$ MHz;<br>RXEN at $V_{DD}$ , $V_{IH}=V_{DD}$ ,<br>$V_{IL}=GND$ , $R_L=100 \Omega$ , test setup<br>as in Figure 8, test pattern as in<br>Table 11       | $f_{CLK}=15$ MHz <sup>(4)</sup>                | 630   | ps   |
|                        |  | $f_{CLK}=4$ MHz to 15 MHz <sup>(5)</sup>       | $\frac{1}{2 \cdot 30 \cdot f_{CLK}} - 480$ ps |      |
|                        | 2ChM: $x = 0..14$ ,<br>$f_{PCLK} = 30$ MHz<br>RXEN at $V_{DD}$ , $V_{IH}=V_{DD}$ ,<br>$V_{IL}=GND$ , $R_L=100 \Omega$ , test setup<br>as in Figure 8, test pattern as in<br>Table 12 | $f_{CLK}=30$ MHz <sup>(4)</sup>                | 630   |      |
|                        |  | $f_{CLK}=8$ MHz to 30 MHz <sup>(5)</sup>       | $\frac{1}{2 \cdot 15 \cdot f_{CLK}} - 480$ ps |      |
|                        | 3ChM:<br>RXEN at $V_{DD}$ , $V_{IH}=V_{DD}$ ,<br>$V_{IL}=GND$ , test setup as in<br>Figure 8, test pattern as in<br>Table 13   | $f_{CLK}= 65$ MHz <sup>(4)</sup>               | 360   |      |
|                        |  | $f_{CLK} = 20$ MHz to 65<br>MHz <sup>(5)</sup> | $\frac{1}{2 \cdot 10 \cdot f_{CLK}} - 410$ ps |      |

- (1) Receiver Input Skew Margin ( $t_{RSKM}$ ) is the timing margin available for transmitter output pulse position ( $t_{PPOS}$ ), interconnect skew, and interconnect inter-symbol interference.  $t_{RSKM}$  represents the remainder of the serial bit time not taken up by the receiver strobe uncertainty; The  $t_{RSKM}$  assumes a bit error rate better than  $10^{-12}$ .
- (2)  $t_{RSKM}$  is indirectly proportional to the internal set-up and hold time uncertainty, ISI and duty cycle distortion from the front end receiver, the skew mismatch between CLK and data D0, D1, and D2, as well as the PLL cycle-to-cycle jitter.
- (3) This includes the receiver internal set-up and hold time uncertainty, all PLL related high-frequency random and deterministic jitter components that impact the jitter budget, ISI and duty cycle distortion from the front end receiver, and the skew between CLK and data D0, D1, and D2; The pulse position min/max variation is given with a bit error rate target of  $10^{-12}$ ; Measurements of the total jitter are taken over a sample amount of  $> 10^{-12}$  samples.
- (4) The Minimum and Maximum Limits are based on statistical analysis of the device performance over process, voltage, and temp ranges.
- (5) These Minimum and Maximum Limits are simulated only.

**PARAMETER MEASUREMENT INFORMATION**



**Figure 7. Power Supply Noise Test Set-Up**



**Figure 8. Jitter Budget**

PARAMETER MEASUREMENT INFORMATION (continued)

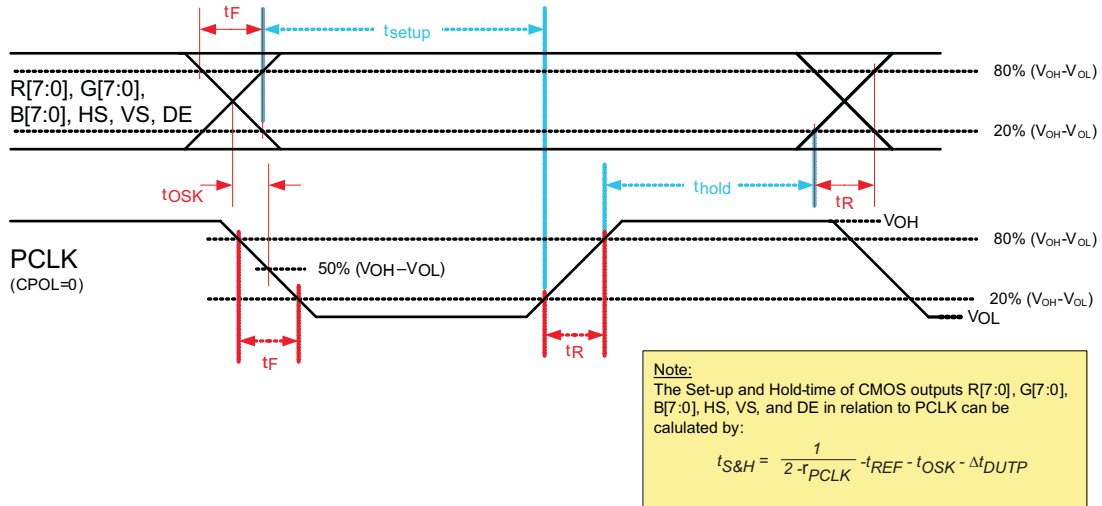


Figure 9. Output Rise/Fall, Setup/Hold Time

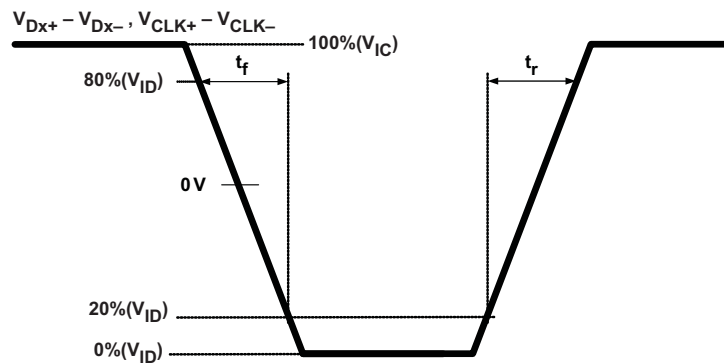


Figure 10. SubLVDS Differential Input Rise and Fall Time Definition

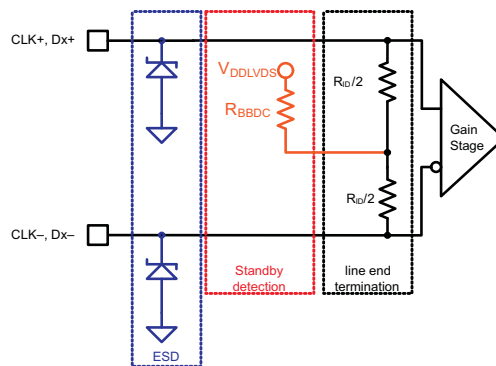


Figure 11. Equivalent Input Circuit Design

PARAMETER MEASUREMENT INFORMATION (continued)

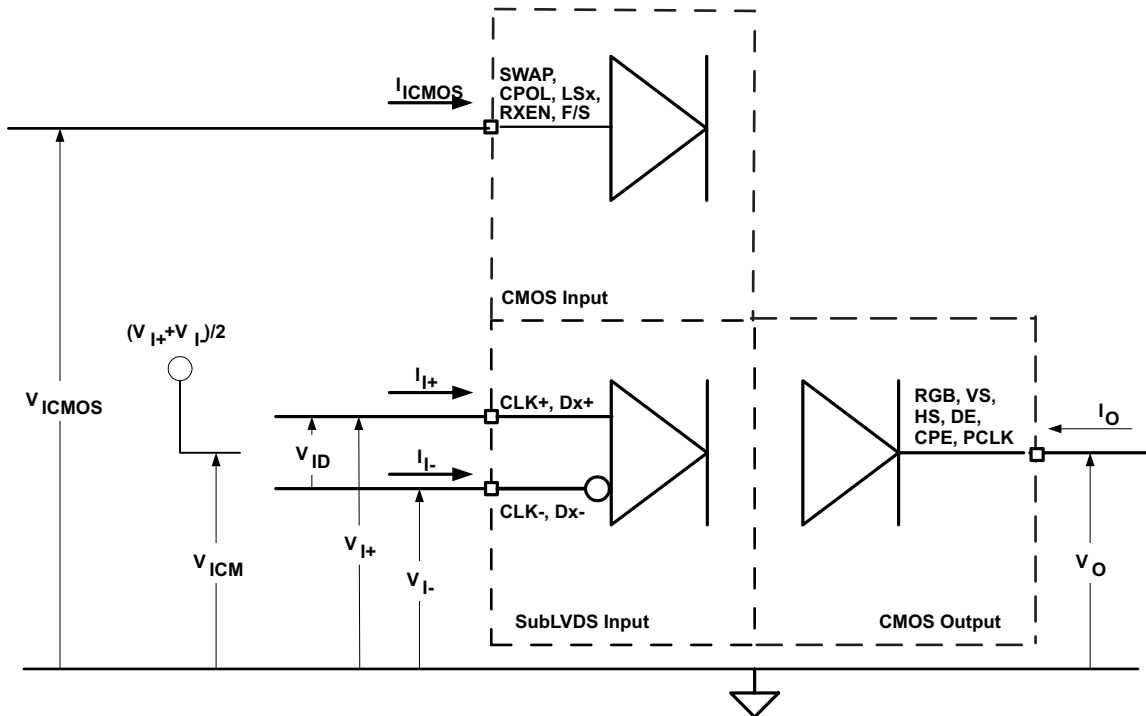


Figure 12. I/O Voltage and Current Definition

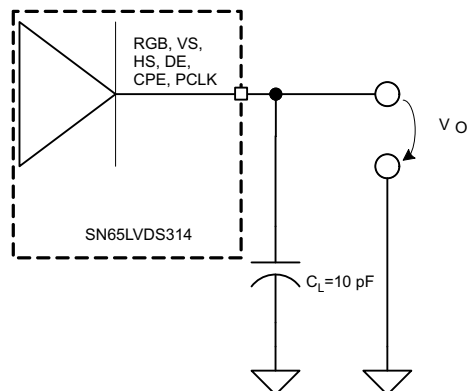


Figure 13. CMOS Output Test Circuit, Signal and Timing Definition

PARAMETER MEASUREMENT INFORMATION (continued)

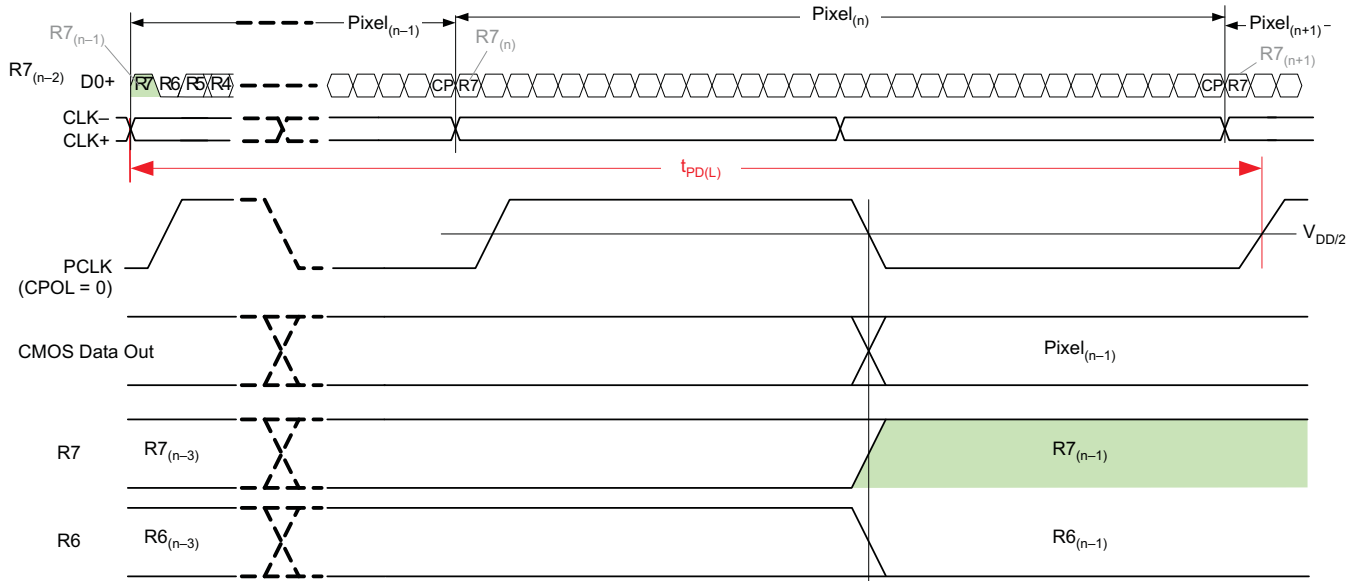


Figure 14. Propagation Delay Input to Output (LS0=LS1=0)

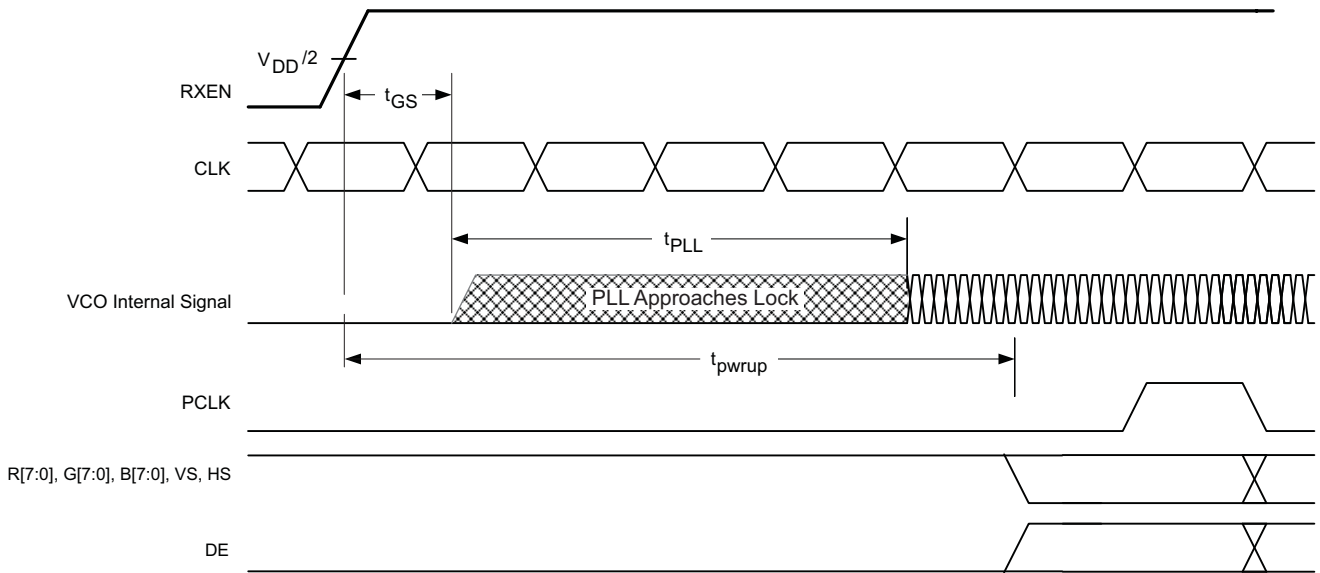
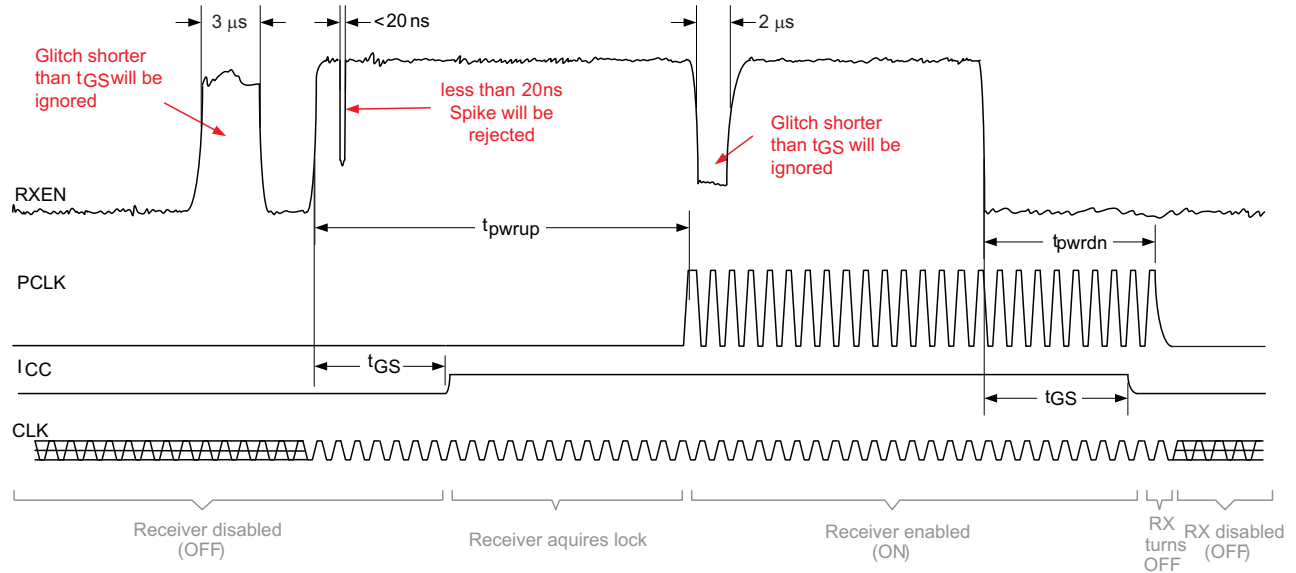
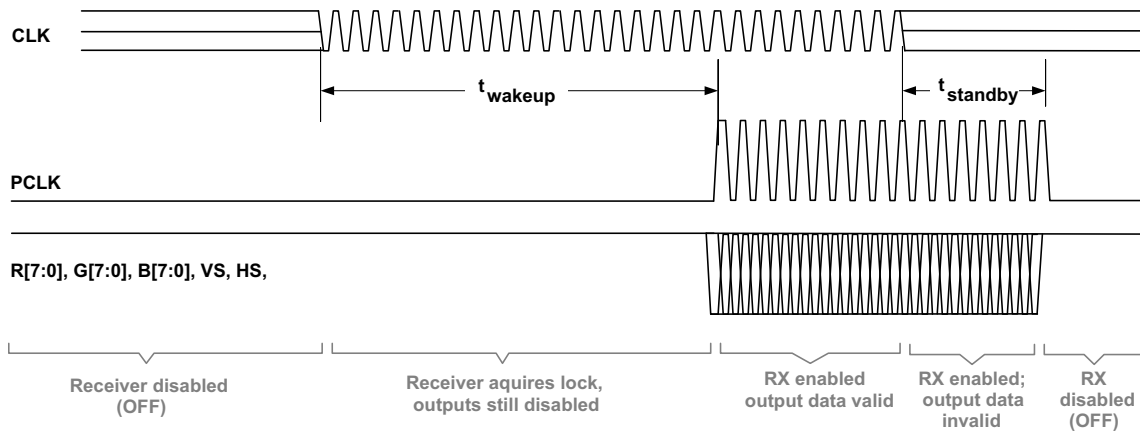


Figure 15. Receiver Phase Lock Loop Set Time and Receiver Enable Time

**PARAMETER MEASUREMENT INFORMATION (continued)**



**Figure 16. Receiver Enable/Disable Glitch Suppression Time**



**Figure 17. Standby Detection**

**POWER CONSUMPTION TESTS**

Table 5 shows an example test pattern word.

**Table 5. Example Test Pattern Word**

| Word | R[7:4], R[3:0], G[7:4], G[3:0], B[7:4], B[3:0], 0,VS,HS,DE |
|------|--|
| 1    | 0x7C3E1E7  |

| 7  |    |    |    | C  |    |    |    | 3  |    |    |    | E  |    |    |    | 1  |    |    |    | E  |    |    |    | 7 |    |    |    |
|----|----|----|----|----|----|----|----|----|----|----|----|----|----|----|----|----|----|----|----|----|----|----|----|---|----|----|----|
| R7 | R6 | R5 | R4 | R3 | R2 | R1 | R0 | G7 | G6 | G5 | G4 | G3 | G2 | G1 | G0 | B7 | B6 | B5 | B4 | B3 | B2 | B1 | B0 | 0 | VS | HS | DE |
| 0  | 1  | 1  | 1  | 1  | 1  | 0  | 0  | 0  | 0  | 1  | 1  | 1  | 1  | 1  | 0  | 0  | 0  | 0  | 1  | 1  | 1  | 1  | 0  | 0 | 1  | 1  | 1  |

## TYPICAL IC POWER CONSUMPTION TEST PATTERN

Typical power-consumption test patterns consist of sixteen 30-bit receive words in 1-channel mode, eight 30-bit receive words in 2-channel mode and five 30-bit receive words in 3-channel mode. The pattern repeats itself throughout the entire measurement. It is assumed that every possible code on the RGB outputs has the same probability to occur during typical device operation.

**Table 6. Typical IC Power Consumption Test Pattern, 1-Channel Mode**

| Word | Test Pattern:<br>R[7:4], R[3:0], G[7:4], G[3:0], B[7-4], B[3-0], 0,VS,HS,DE |
|------|---|
| 1    | 0x0000007   |
| 2    | 0xFFFF007   |
| 3    | 0x01FFF47   |
| 4    | 0xF0E07F7   |
| 5    | 0x7C3E1E7   |
| 6    | 0xE707C37   |
| 7    | 0xE1CE6C7   |
| 8    | 0xF1B9237   |
| 9    | 0x91BB347   |
| 10   | 0xD4CCC67   |
| 11   | 0xAD53377   |
| 12   | 0xACB2207   |
| 13   | 0xAAB2697   |
| 14   | 0x5556957   |
| 15   | 0xAAAAAB3   |
| 16   | 0xAAAAAA5   |

**Table 7. Typical IC Power Consumption Test Pattern, 2-Channel Mode**

| Word | Test Pattern:<br>R[7:4], R[3:0], G[7:4], G[3:0], B[7-4], B[3-0], 0,VS,HS,DE |
|------|---|
| 1    | 0x0000001   |
| 2    | 0x03F03F1   |
| 3    | 0xBFFBFF1   |
| 4    | 0x1D71D71   |
| 5    | 0x4C74C71   |
| 6    | 0xC45C451   |
| 7    | 0xA3aA3A5   |
| 8    | 0x5555553   |

**Table 8. Typical IC Power Consumption Test Pattern, 3-Channel Mode**

| Word | Test Pattern:<br>R[7:4], R[3:0], G[7:4], G[3:0], B[7-4], B[3-0], 0,VS,HS,DE |
|------|---|
| 1    | 0xFFFFFFFF1   |
| 2    | 0x0000001   |
| 3    | 0xF0F0F01   |
| 4    | 0xCCCCCC1   |
| 5    | 0xAAAAAA7   |

## MAXIMUM POWER CONSUMPTION TEST PATTERN

The maximum (or worst-case) power consumption of the SN65LVDS314 is tested using the two different test patterns shown in table. Test patterns consist of sixteen 30-bit receive words in 1-channel mode, eight 30-bit receive words in 2-channel mode, and five 30-bit receive words in 3-channel mode. The pattern repeats itself throughout the entire measurement. It is assumed that every possible code on RGB outputs has the same probability to occur during typical device operation.

**Table 9. Worst-Case Power Consumption Test Pattern**

| Word | Test Pattern:<br>R[7:4], R[3:0], G[7:4], G[3:0], B[7-4], B[3-0], 0,VS,HS,DE |
|------|---|
| 1    | 0xAAAAA5  |
| 2    | 0x555555  |

**Table 10. Worst-Case Power Consumption Test Pattern**

| Word | Test Pattern:<br>R[7:4], R[3:0], G[7:4], G[3:0], B[7-4], B[3-0], 0,VS,HS,DE |
|------|---|
| 1    | 0x000000  |
| 2    | 0xFFFFF7  |

## OUTPUT SKEW PULSE POSITION and JITTER PERFORMANCE

The following test patterns are used to measure the output skew pulse position and the jitter performance of the SN65LVDS314. The jitter test pattern stresses the interconnect, particularly to test for ISI, using very long run-lengths of consecutive bits, and incorporating very high and low data rates, maximizing switching noise. Each pattern is self-repeating for the duration of the test.

**Table 11. Receive Jitter Test Pattern, 1-Channel Mode**

| Word | Test Pattern:<br>R[7:4], R[3:0], G[7:4], G[3:0], B[7-4], B[3-0], 0,VS,HS,DE |
|------|---|
| 1    | 0x000001  |
| 2    | 0x000031  |
| 3    | 0x0000F1  |
| 4    | 0x0003F1  |
| 5    | 0x000FF1  |
| 6    | 0x003FF1  |
| 7    | 0x00FFF1  |
| 8    | 0x0F0F0F1   |
| 9    | 0x0C30C31   |
| 10   | 0x0842111   |
| 11   | 0x1C71C71   |
| 12   | 0x18C6311   |
| 13   | 0x1111111   |
| 14   | 0x3333331   |
| 15   | 0x2452413   |
| 16   | 0x22A2A25   |
| 17   | 0x5555553   |
| 18   | 0xDB6DB65   |
| 19   | 0xCCCCC1  |
| 20   | 0xEEEEE1  |
| 21   | 0xE739CE1   |
| 22   | 0xE38E381   |
| 23   | 0xF7BDEE1   |

**Table 11. Receive Jitter Test Pattern, 1-Channel  
Mode (continued)**

| <b>Word</b> | <b>Test Pattern:<br/>R[7:4], R[3:0], G[7:4], G[3:0], B[7-4], B[3-0], 0,VS,HS,DE</b> |
|-------------|---|
| 24          | 0xF3CF3C1   |
| 25          | 0xF0F0F01   |
| 26          | 0xFFF0001   |
| 27          | 0xFFFC001   |
| 28          | 0xFFFF001   |
| 29          | 0xFFFC01  |
| 30          | 0xFFFF01  |
| 31          | 0xFFFFC1  |
| 32          | 0xFFFFF1  |

**Table 12. Receive Jitter Test Pattern, 2-Channel Mode**

| Word | Test Pattern:<br>R[7:4], R[3:0], G[7:4], G[3:0], B[7-4], B[3-0], 0,VS,HS,DE |
|------|---|
| 1    | 0x0000001   |
| 2    | 0x000FFF3   |
| 3    | 0x8008001   |
| 4    | 0x0030037   |
| 5    | 0xE00E001   |
| 6    | 0x00FF001   |
| 7    | 0x007E001   |
| 8    | 0x003C001   |
| 9    | 0x0018001   |
| 10   | 0x1C7E381   |
| 11   | 0x3333331   |
| 12   | 0x555AAA5   |
| 13   | 0x6DBDB61   |
| 14   | 0x7777771   |
| 15   | 0x555AAA3   |
| 16   | 0xAAAAAA5   |
| 17   | 0x5555553   |
| 18   | 0xAAA5555   |
| 19   | 0x8888881   |
| 20   | 0x9242491   |
| 21   | 0xAAA5571   |
| 22   | 0xCCCCC1  |
| 23   | 0xE3E1C71   |
| 24   | 0xFFE7FF1   |
| 25   | 0xFFC3FF1   |
| 26   | 0xFF81FF1   |
| 27   | 0xFE00FF1   |
| 28   | 0x1FF1FF1   |
| 29   | 0xFFCFFC3   |
| 30   | 0x7FF7FF1   |
| 31   | 0xFFF0007   |
| 32   | 0xFFFFFFFF1   |

**Table 13. Receive Jitter Test Pattern, 3-Channel Mode**

| Word | Test Pattern:<br>R[7:4], R[3:0], G[7:4], G[3:0], B[7-4], B[3-0], 0,VS,HS,DE |
|------|---|
| 1    | 0x0000001   |
| 2    | 0x0000001   |
| 3    | 0x0000003   |
| 4    | 0x0101013   |
| 5    | 0x0303033   |
| 6    | 0x0707073   |
| 7    | 0x1818183   |
| 8    | 0xE7E7E71   |
| 9    | 0x3535351   |
| 10   | 0x0202021   |
| 11   | 0x5454543   |
| 12   | 0xA5A5A51   |
| 13   | 0xADADAD1   |
| 14   | 0x5555551   |
| 15   | 0xA6A2AA3   |
| 16   | 0xA6A2AA5   |
| 17   | 0x5555553   |
| 18   | 0x5555555   |
| 19   | 0xAAAAAA1   |
| 20   | 0x5252521   |
| 21   | 0x5A5A5A1   |
| 22   | 0xABABAB1   |
| 23   | 0xFDFCFD1   |
| 24   | 0xCAAACA1   |
| 25   | 0x1818181   |
| 26   | 0xE7E7E71   |
| 27   | 0xF8F8F81   |
| 28   | 0xFCFCFC1   |
| 29   | 0xFEFEFE1   |
| 30   | 0xFFFFFFFF1   |
| 31   | 0xFFFFFFFF5   |
| 32   | 0xFFFFFFFF5   |

## TYPICAL CHARACTERISTIC CURVES

The SN65LVDS314 device has very similar parametric curves as the SN65LVDS302. Please refer to this section in the SN65LVDS302 datasheet ([SLLS733](#)) for a general understanding of SN65LVDS314 characteristics.

## APPLICATION INFORMATION

### Preventing Increased Leakage Currents in Control Inputs

A floating (left open) CMOS input allows leakage currents to flow from  $V_{DD}$  to GND. Do not leave any CMOS input unconnected or floating. Every input must be connected to a valid logic level  $V_{IH}$  or  $V_{OL}$  while power is supplied to  $V_{DD}$ . This also minimizes the power consumption of standby and power down mode.

### Power Supply Design Recommendation

For a multilayer PCB, it is recommended to keep one common GND layer underneath the device and connect all ground terminals directly to this plane.

### SN65LVDS314 DECOUPLING RECOMMENDATION

The SN65LVDS314 was designed to operate reliably in a constricted environment with other digital switching ICs. In many designs, the SN65LVDS314 often shares a power supply with various other ICs. The SN65LVDS314 can operate with power supply noise as specified in Recommend Device Operating Conditions. To minimize the power supply noise floor, provide good decoupling near the SN65LVDS314 power pins. The use of four ceramic capacitors (two 0.01  $\mu\text{F}$  and two 0.1  $\mu\text{F}$ ) provides good performance. At the very least, it is recommended to install one 0.1  $\mu\text{F}$  and one 0.01  $\mu\text{F}$  capacitor near the SN65LVDS314. To avoid large current loops and trace inductance, the trace length between decoupling capacitor and IC power inputs pins must be minimized. Placing the capacitor underneath the SN65LVDS314 on the bottom of the PCB is often a good choice.

### VGA APPLICATION

Figure 18 shows a possible implementation of a standard 640x480 VGA display. The LVDS301 interfaces to the SN65LVDS314, which is the corresponding receiver device to deserialize the data and drive the display driver. The pixel clock rate of 22 MHz assumes ~10% blanking overhead and 60 Hz display refresh rate. The application assumes 24-bit color resolution. Also shown is how the application processor provides a powerdown (reset) signal for both serializer and the display driver. The signal count over the Flexible Printed Circuit board (FPC) could be further decreased by using the standby option on the SN65LVDS314 and pulling RXEN high with a 30 k $\Omega$  resistor to  $V_{DD}$ .

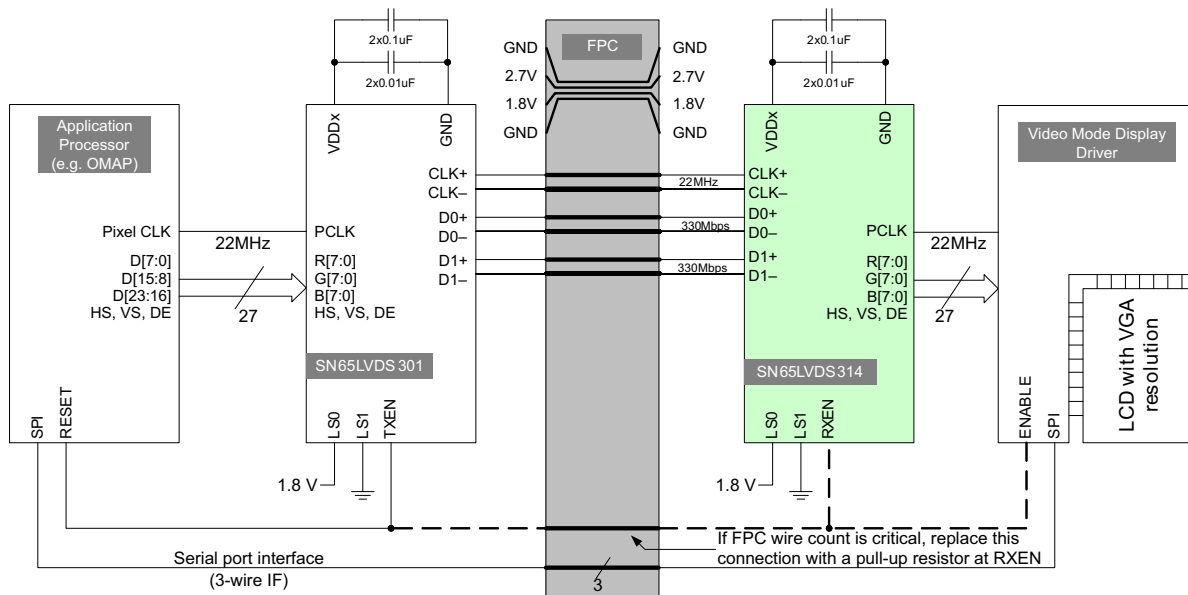


Figure 18. Typical VGA Display Application

# SN65LVDS314

SLLSE98A – AUGUST 2012 – REVISED SEPTEMBER 2012

www.ti.com

## DUAL LCD-DISPLAY APPLICATION

The example in Figure 19 shows a possible application setup driving two video-mode displays from one application processor. The data rate of 330 Mbps at a pixel clock rate of 5.5 MHz corresponds to a 320x240 QVGA resolution at 60 Hz refresh rate and 10% blanking overhead.

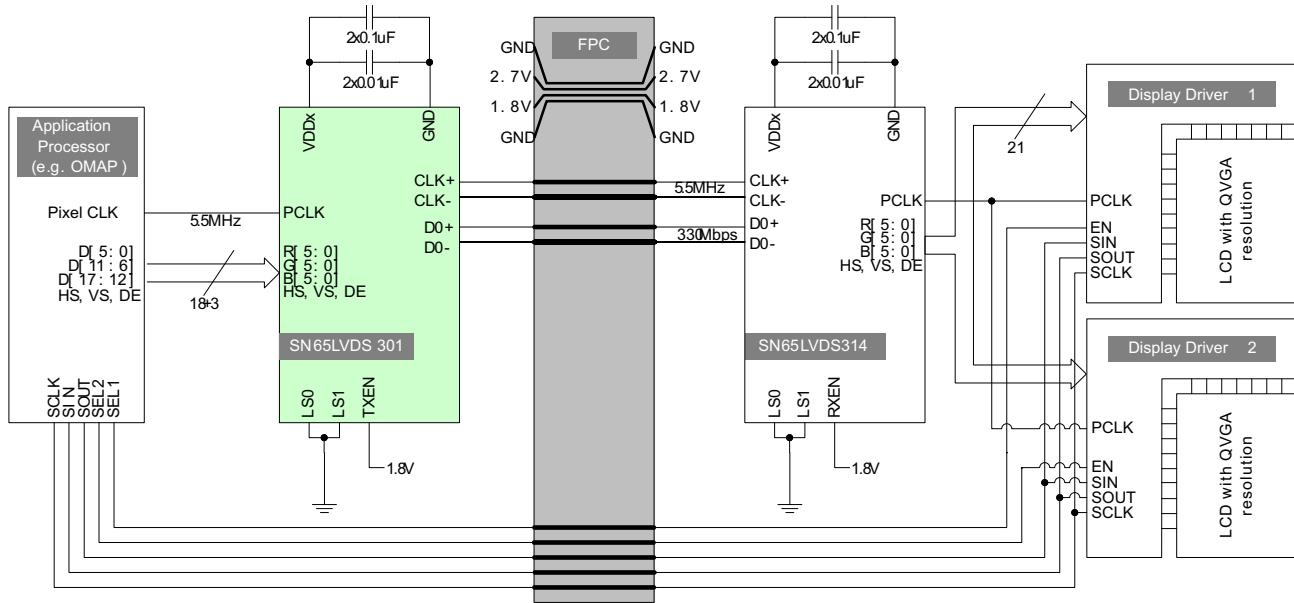


Figure 19. Example Dual-QVGA Display Application

## TYPICAL APPLICATION FREQUENCIES

The SN65LVDS314 supports pixel clock frequencies from 4 MHz to 65 MHz over 1, 2, or 3 data lanes. Table 14 provides a few typical display resolution examples and shows the number of data lanes necessary to connect the SN65LVDS314 with the display. The blanking overhead is assumed to be 20%. Often, blanking overhead is smaller, resulting in a lower data rate. Furthermore, the examples in the table assumes a display frame refresh rate of 60-Hz. The actual refresh rate may differ depending on the application-processor clock implementation.

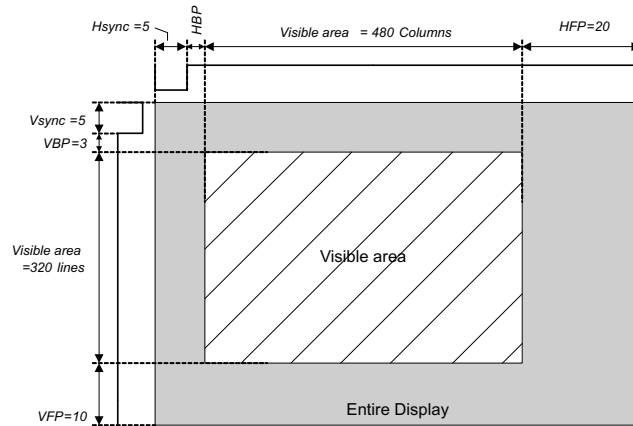
Table 14. Typical Application Data Rates and Serial Lane Usage

| Display Screen Resolution | Visible Pixel Count | Blanking Overhead | Display Refresh Rate | Pixel Clock Frequency [MHz] | Serial Data Rate Per Lane |          |          |
|---------------------------|---------------------|-------------------|----------------------|-----------------------------|---------------------------|----------|----------|
|                           |                     |                   |                      |                             | 1-ChM                     | 2-ChM    | 3-ChM    |
| 176x220 (QCIF+)           | 38,720              | 20%               | 90 Hz                | 4.2 MHz                     | 125 Mbps                  |          |          |
| 240x320 (QVGA)            | 76,800              | 20%               | 60 Hz                | 5.5 MHz                     | 166 Mbps                  |          |          |
| 640x200                   | 128,000             | 20%               | 60 Hz                | 9.2 MHz                     | 276 Mbps                  | 138 Mbps |          |
| 352x416 (CIF+)            | 146,432             | 20%               | 60 Hz                | 10.5 MHz                    | 316 Mbps                  | 158 Mbps |          |
| 352x440                   | 154,880             | 20%               | 60 Hz                | 11.2 MHz                    | 335 Mbps                  | 167 Mbps |          |
| 320x480 (HVGA)            | 153,600             | 20%               | 60 Hz                | 11.1 MHz                    | 332 Mbps                  | 166 Mbps |          |
| 800x250                   | 200,000             | 20%               | 60 Hz                | 14.4 MHz                    | 432 Mbps                  | 216 Mbps |          |
| 640x320                   | 204,800             | 20%               | 60 Hz                | 14.7 MHz                    | 442 Mbps                  | 221 Mbps |          |
| 640x480 (VGA)             | 307,200             | 20%               | 60 Hz                | 22.1 MHz                    |                           | 332 Mbps | 221 Mbps |
| 1024x320                  | 327,680             | 20%               | 60 Hz                | 23.6 MHz                    |                           | 354 Mbps | 236 Mbps |
| 854x480 (WVGA)            | 409,920             | 20%               | 60 Hz                | 29.5 MHz                    |                           | 443 Mbps | 295 Mbps |
| 800x600 (SVGA)            | 480,000             | 20%               | 60 Hz                | 34.6 MHz                    |                           |          | 346 Mbps |
| 1024x768 (XGA)            | 786,432             | 20%               | 60 Hz                | 56.6 MHz                    |                           |          | 566 Mbps |

### CALCULATION EXAMPLE: HVGA DISPLAY

The following calculation shows an example for a Half-VGA display with the following parameters:

|                           |             |
|---------------------------|-------------|
| Display Resolution:       | 480 x 320   |
| Frame Refresh Rate:       | 58.4 Hz     |
| Horizontal Visible Pixel: | 480 columns |
| Horizontal Front Porch:   | 20 columns  |
| Horizontal Sync:          | 5 columns   |
| Horizontal Back Porch:    | 3 columns   |
| Vertical Visible Pixel:   | 320 lines   |
| Vertical Front Porch:     | 10 lines    |
| Vertical Sync:            | 5 lines     |
| Vertical Back Porch:      | 3 lines     |



**Figure 20. HVGA Display**

*Calculation of the total number of pixel and blanking overhead:*

|                           |   |
|---------------------------|---|
| Visible Area Pixel Count: | $480 \times 320 = 153600$ pixel                   |
| Total Frame Pixel Count:  | $(480+20+5+3) \times (320+10+5+3) = 171704$ pixel |
| Blanking Overhead:        | $(171704-153600) \div 153600 = 11.8 \%$           |

*The application requires the following serial-link parameters:*

|                      |   |
|----------------------|---|
| Pixel Clk Frequency: | $171704 \times 58.4 \text{ Hz} = 10.0 \text{ MHz}$                                  |
| Serial Data Rate:    | 1-channel mode: $10.0 \text{ MHz} \times 30 \text{ bit/channel} = 300 \text{ Mbps}$ |
|                      | 2-channel mode: $10.0 \text{ MHz} \times 15 \text{ bit/channel} = 150 \text{ Mbps}$ |

# SN65LVDS314

SLLSE98A – AUGUST 2012 – REVISED SEPTEMBER 2012

www.ti.com

## How To Determine Interconnect Skew and Jitter Budget

Designing a reliable data link requires examining the interconnect skew and jitter budget. The sum of all transmitter, PCB, connector, FPC, and receiver uncertainties must be smaller than the available serial bit time. The highest pixel clock frequency defines the available serial bit time. The transmitter timing uncertainty is defined by  $t_{PPOS}$  in the transmitter data sheet. For a bit-error-rate target of  $\leq 10^{-12}$ , the measurement duration for  $t_{PPOS}$  is  $\geq 1012$ . The SN65LVDS314 receiver can tolerate a maximum timing uncertainty defined by  $t_{RSKM}$ . The interconnect budget is calculated by:

$$t_{interconnect} = t_{RSKM} - t_{PPOS} \tag{1}$$

### Example:

$f_{PCLK}(\max) = 23 \text{ MHz}$  (VGA display resolution, 60 Hz)

Transmission mode: 2-ChM;  $t_{PPOS}(\text{SN65LVDS301}) = 330 \text{ ps}$

Target bit error rate:  $10^{-12}$

$t_{RSKM}(\text{SN65LVDS314}) = 1/(2 \cdot 15 \cdot f_{PCLK}) - 480 \text{ ps} = 969 \text{ ps}$

The interconnect budget for cable skew and ISI needs to be smaller than:

$$t_{interconnect} = t_{RSKM} - t_{PPOS} = 639 \text{ ps} \tag{2}$$

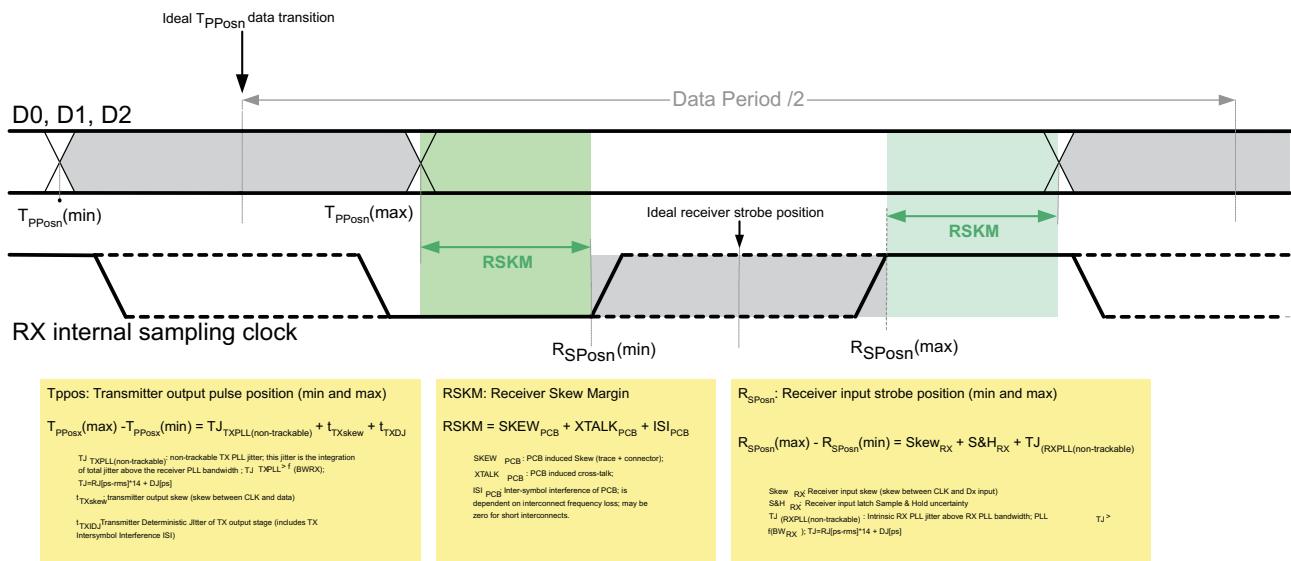


Figure 21. Jitter Budget

## F/S-PIN SETTING AND CONNECTING THE SN65LVDS314 TO AN LCD DRIVER

### NOTE

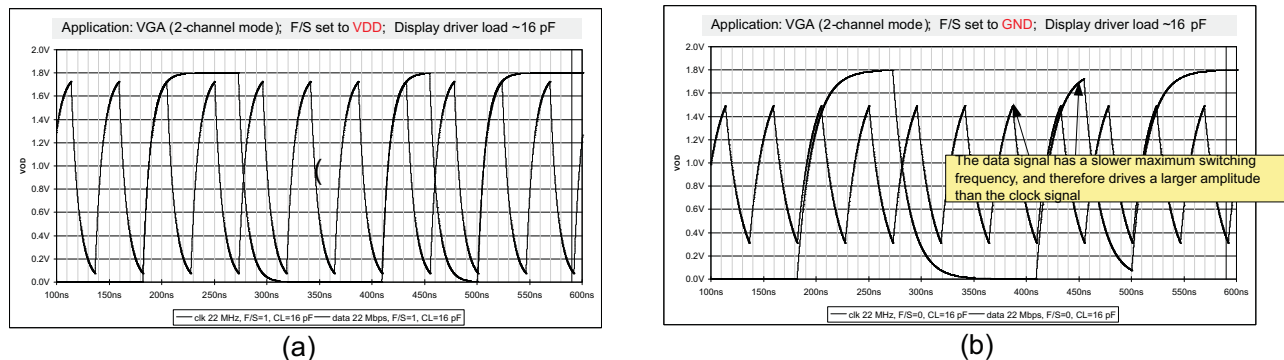
**Receiver PLL tracking:** To maximize the design margin for the interconnect, good RX PLL tracking of the TX PLL is important. FlatLink3G requires the RX PLL to have a bandwidth higher than the bandwidth of the TX PLL. The SN65LVDS314 PLL design is optimized to track the SN65LVDS0301 PLL particularly well, thus providing a very large receiver skew margin. A FlatLink3G-compliant link must provide at least  $\pm 225$  ppm of receiver skew margin for the interconnect.

It is important to understand the tradeoff between power consumption, EMI, and maximum speed when selecting the F/S signal. It is beneficial to choose the slowest rise time possible to minimize EMI and power consumption. Unfortunately a slower rise time also reduces the timing margin left for the LCD driver. Hence it is necessary to calculate the timing margin to select the correct F/S pin setting.

The output rise time depends on the output driver strength and the output load. An LCD driver typical capacitive load is assumed with  $\sim 10$ pF. The higher the capacitive load, the slower will be the rise time. Rise time of the SN65LVDS314 is measured as the time duration it takes the output voltage to rise from 20% of  $V_{DD}$  and 80% of  $V_{DD}$  and fall time is defined as the time for the output voltage to transition from 80% of  $V_{DD}$  down to 20%.

Within one mode of operation and one F/S pin setting, the rise time of the output stage is fixed and does not adjust to the pixel frequency. Due to the short bit time at very fast pixel clock speeds and the real capacitive load of the display driver, the output amplitude might not reach  $V_{DD}$  and GND saturation fully. To ensure sufficient signal swing and verify the design margin, it becomes necessary to determine that the output amplitude under any circumstance reaches the display driver's input stage logic threshold (usually 30% and 70% of  $V_{DD}$ ).

Figure 22 shows a worst-case rise time simulation assuming a LCD driver load of 16pF at VGA display resolution and a  $V_{DD\_IO}$  of 1.8 V. PCLK is the fastest switching output. With F/S set to GND (Figure 22-a), the PCLK output voltage amplitude is significantly reduced. The voltage amplitude of the output data RGB[7:0], VS, HS, and DE shows less amplitude attenuation because these outputs carry random data pattern and toggle equal or less than half of the PCLK frequency. It is necessary to determine the timing margin between the LVDS314 output and LCD driver input.



**Figure 22. Output Amplitude as a Function of Output Toggling Frequency, Capacitive Load and F/S Setting**

## SN65LVDS314

SLLSE98A – AUGUST 2012 – REVISED SEPTEMBER 2012

www.ti.com

### HOW TO DETERMINE THE LCD DRIVER TIMING MARGIN

To determine the timing margin, it is necessary to specify the frequency of operation, identify the set-up and hold time of the LCD driver, and specify the output load of the SN65LVDS314 as a combination of the LCD driver input parasitics plus any capacitance caused by the connecting PCB trace. Furthermore, the setting of pin F/S and the SN65LVDS314 output skew impact the margin. The total remaining design margin calculates as following:

$$t_{DM} = \frac{1}{2 \times f_{PCLK}} - t_{DUTP(max\_error)} - \frac{t_{rise(max)} \times C_{LOAD}}{10 \text{ pF}} - |t_{OSK}| \quad (3)$$

where:

$t_{DM}$  – Design margin

$f_{PCLK}$  – Pixel clock frequency

$t_{DUTP(max\_error)}$  – maximum duty cycle error

$t_{rise(max)}$  – maximum rise or fall time; see  $t_{R/F}$  under switching characteristics

$C_L$  – parasitic capacitance (sum of LCD driver input parasitics + connecting PCB trace)

$t_{skew}$  – clock to data output skew SN65LVDS314

#### Example:

At a pixel clock frequency of 5.5MHz (QVGA), and an assumed LCD driver load of 15 pF, the remaining timing margin is:

$$t_{DUTP(max\_error)} = \frac{|t_{DUTP(max)} - 50|}{100\%} \times t_{PCLK} = \frac{5\%}{100\%} \times \frac{1}{5.5\text{MHz}} = 9.1\text{ns}$$

$$t_{DM} = \frac{1}{2 \times 5.5\text{MHz}} - 9\text{ns} - \frac{16\text{ns}_{(F/S=GND)} \times 15\text{pF}}{10\text{pF}} - 500\text{ps} = 57.3\text{ns}$$

As long as the set-up and hold time of the LCD driver are each less than 57 ns, the timing budget is met sufficiently.

**PACKAGING INFORMATION**

| Orderable Device | Status <sup>(1)</sup> | Package Type | Package Drawing | Pins | Package Qty | Eco Plan <sup>(2)</sup>    | Lead/<br>Ball Finish | MSL Peak Temp <sup>(3)</sup> | Samples<br>(Requires Login) |
|------------------|-----------------------|--------------|-----------------|------|-------------|----------------------------|----------------------|------------------------------|-----------------------------|
| SN65LVDS314RSK   | PREVIEW               | QFN          | RSK             | 64   | 2000        | TBD                        | Call TI              | Call TI                      |                             |
| SN65LVDS314RSKR  | ACTIVE                | QFN          | RSK             | 64   | 2000        | Green (RoHS<br>& no Sb/Br) | CU NIPDAU            | Level-3-260C-168 HR          |                             |
| SN65LVDS314RSKT  | PREVIEW               | QFN          | RSK             | 64   | 250         | TBD                        | Call TI              | Call TI                      |                             |

<sup>(1)</sup> The marketing status values are defined as follows:

**ACTIVE:** Product device recommended for new designs.

**LIFEBUY:** TI has announced that the device will be discontinued, and a lifetime-buy period is in effect.

**NRND:** Not recommended for new designs. Device is in production to support existing customers, but TI does not recommend using this part in a new design.

**PREVIEW:** Device has been announced but is not in production. Samples may or may not be available.

**OBSELETE:** TI has discontinued the production of the device.

<sup>(2)</sup> Eco Plan - The planned eco-friendly classification: Pb-Free (RoHS), Pb-Free (RoHS Exempt), or Green (RoHS & no Sb/Br) - please check <http://www.ti.com/productcontent> for the latest availability information and additional product content details.

**TBD:** The Pb-Free/Green conversion plan has not been defined.

**Pb-Free (RoHS):** TI's terms "Lead-Free" or "Pb-Free" mean semiconductor products that are compatible with the current RoHS requirements for all 6 substances, including the requirement that lead not exceed 0.1% by weight in homogeneous materials. Where designed to be soldered at high temperatures, TI Pb-Free products are suitable for use in specified lead-free processes.

**Pb-Free (RoHS Exempt):** This component has a RoHS exemption for either 1) lead-based flip-chip solder bumps used between the die and package, or 2) lead-based die adhesive used between the die and leadframe. The component is otherwise considered Pb-Free (RoHS compatible) as defined above.

**Green (RoHS & no Sb/Br):** TI defines "Green" to mean Pb-Free (RoHS compatible), and free of Bromine (Br) and Antimony (Sb) based flame retardants (Br or Sb do not exceed 0.1% by weight in homogeneous material)

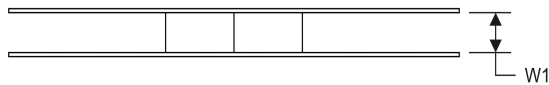
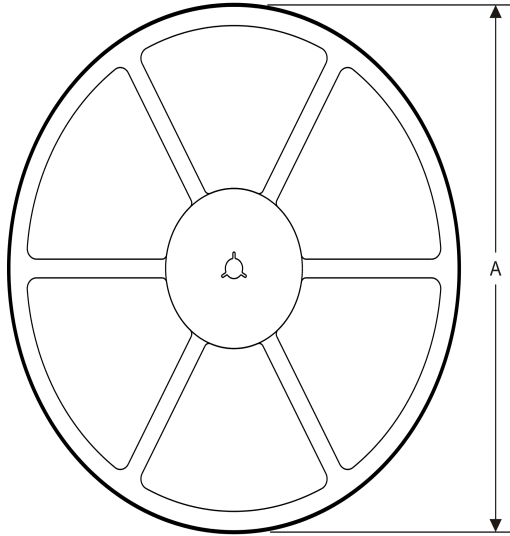
<sup>(3)</sup> MSL, Peak Temp. -- The Moisture Sensitivity Level rating according to the JEDEC industry standard classifications, and peak solder temperature.

**Important Information and Disclaimer:** The information provided on this page represents TI's knowledge and belief as of the date that it is provided. TI bases its knowledge and belief on information provided by third parties, and makes no representation or warranty as to the accuracy of such information. Efforts are underway to better integrate information from third parties. TI has taken and continues to take reasonable steps to provide representative and accurate information but may not have conducted destructive testing or chemical analysis on incoming materials and chemicals. TI and TI suppliers consider certain information to be proprietary, and thus CAS numbers and other limited information may not be available for release.

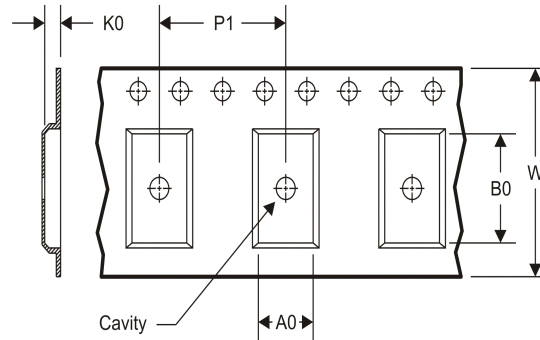
In no event shall TI's liability arising out of such information exceed the total purchase price of the TI part(s) at issue in this document sold by TI to Customer on an annual basis.

**TAPE AND REEL INFORMATION**

**REEL DIMENSIONS**



**TAPE DIMENSIONS**



|    |   |
|----|---|
| A0 | Dimension designed to accommodate the component width     |
| B0 | Dimension designed to accommodate the component length    |
| K0 | Dimension designed to accommodate the component thickness |
| W  | Overall width of the carrier tape                         |
| P1 | Pitch between successive cavity centers                   |

**TAPE AND REEL INFORMATION**

\*All dimensions are nominal

| Device          | Package Type | Package Drawing | Pins | SPQ  | Reel Diameter (mm) | Reel Width W1 (mm) | A0 (mm) | B0 (mm) | K0 (mm) | P1 (mm) | W (mm) | Pin1 Quadrant |
|-----------------|--------------|-----------------|------|------|--------------------|--------------------|---------|---------|---------|---------|--------|---------------|
| SN65LVDS314RSKR | QFN          | RSK             | 64   | 2000 | 330.0              | 16.4               | 8.3     | 8.3     | 2.25    | 12.0    | 16.0   | Q2            |

TAPE AND REEL BOX DIMENSIONS



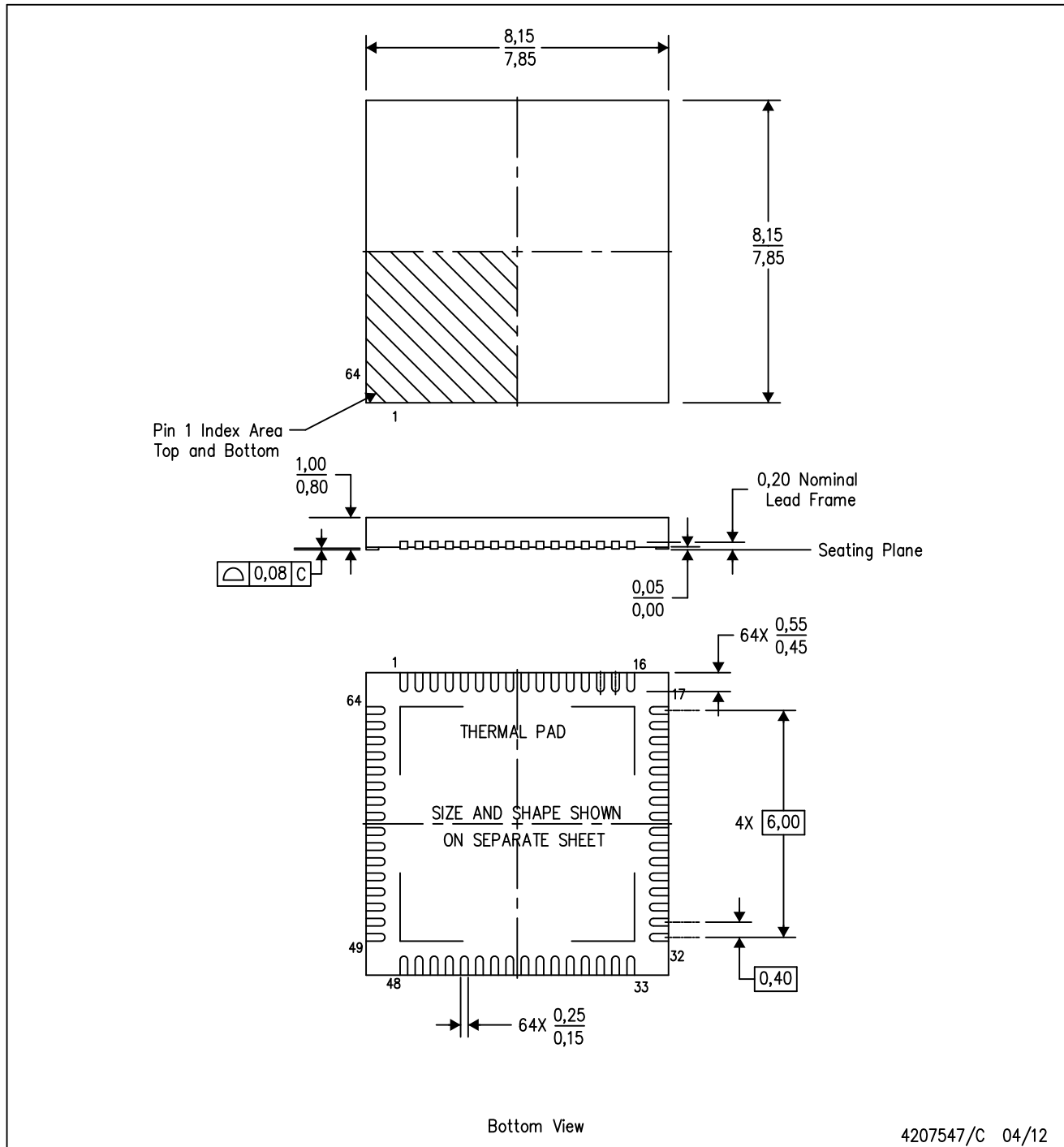
\*All dimensions are nominal

| Device          | Package Type | Package Drawing | Pins | SPQ  | Length (mm) | Width (mm) | Height (mm) |
|-----------------|--------------|-----------------|------|------|-------------|------------|-------------|
| SN65LVDS314RSKR | QFN          | RSK             | 64   | 2000 | 367.0       | 367.0      | 38.0        |

# MECHANICAL DATA

RSK (S-PVQFN-N64)

PLASTIC QUAD FLATPACK NO-LEAD

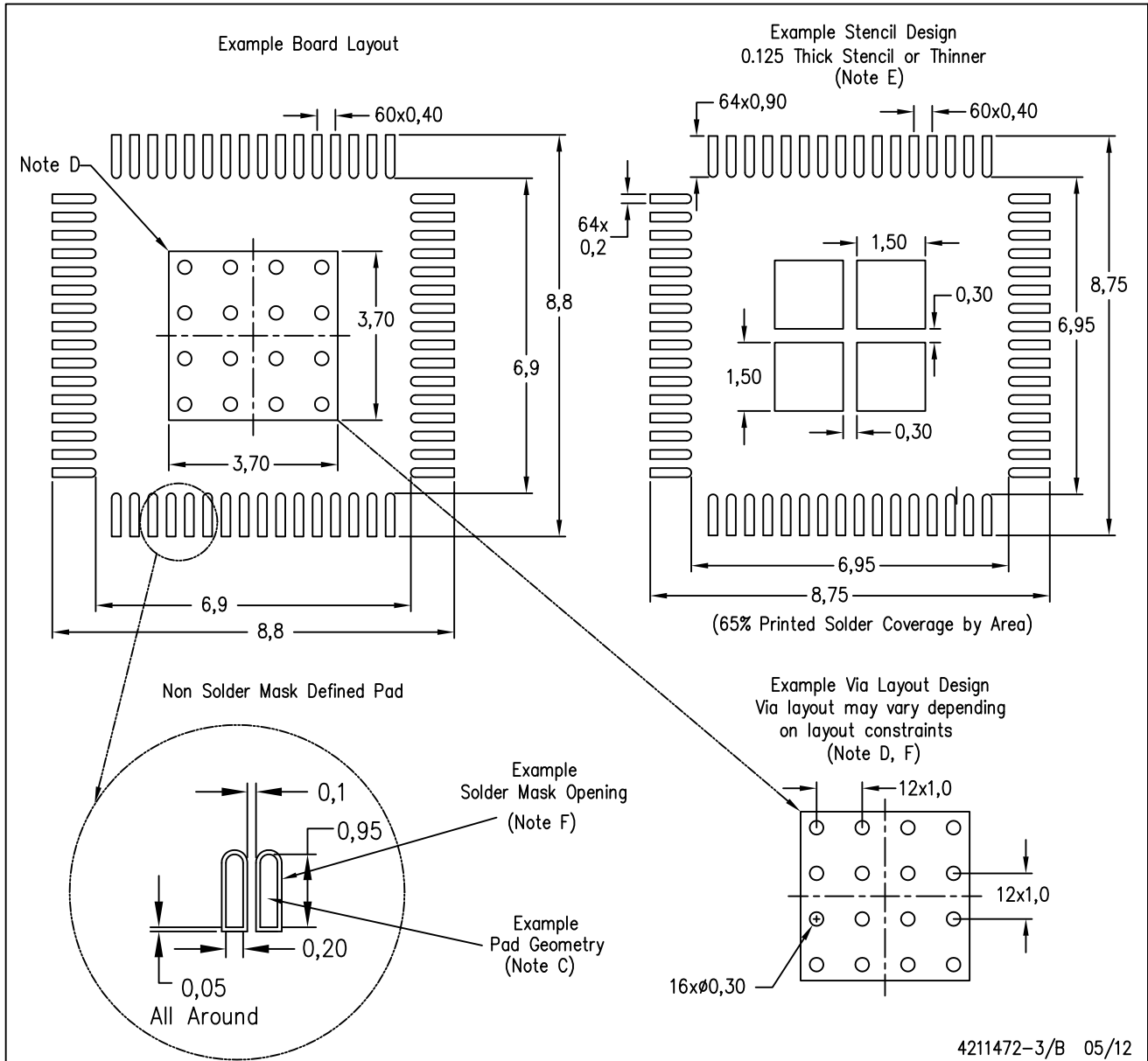


- NOTES:
- A. All linear dimensions are in millimeters. Dimensioning and tolerancing per ASME Y14.5-1994.
  - B. This drawing is subject to change without notice.
  - C. QFN (Quad Flatpack No-Lead) Package configuration.
  - D. The package thermal pad must be soldered to the board for thermal and mechanical performance.
  - E. See the additional figure in the Product Data Sheet for details regarding the exposed thermal pad features and dimensions.



RSK (S-PVQFN-N64)

PLASTIC QUAD FLATPACK NO-LEAD



- NOTES:
- A. All linear dimensions are in millimeters.
  - B. This drawing is subject to change without notice.
  - C. Publication IPC-7351 is recommended for alternate designs.
  - D. This package is designed to be soldered to a thermal pad on the board. Refer to Application Note, Quad Flat-Pack Packages, Texas Instruments Literature No. SCBA017, SLUA271, and also the Product Data Sheets for specific thermal information, via requirements, and recommended board layout. These documents are available at [www.ti.com](http://www.ti.com) <<http://www.ti.com>>.
  - E. Laser cutting apertures with trapezoidal walls and also rounding corners will offer better paste release. Customers should contact their board assembly site for stencil design recommendations. Refer to IPC 7525 for stencil design considerations.
  - F. Customers should contact their board fabrication site for recommended solder mask tolerances and via tenting recommendations for vias placed in the thermal pad.

## IMPORTANT NOTICE

Texas Instruments Incorporated and its subsidiaries (TI) reserve the right to make corrections, enhancements, improvements and other changes to its semiconductor products and services per JESD46, latest issue, and to discontinue any product or service per JESD48, latest issue. Buyers should obtain the latest relevant information before placing orders and should verify that such information is current and complete. All semiconductor products (also referred to herein as "components") are sold subject to TI's terms and conditions of sale supplied at the time of order acknowledgment.

TI warrants performance of its components to the specifications applicable at the time of sale, in accordance with the warranty in TI's terms and conditions of sale of semiconductor products. Testing and other quality control techniques are used to the extent TI deems necessary to support this warranty. Except where mandated by applicable law, testing of all parameters of each component is not necessarily performed.

TI assumes no liability for applications assistance or the design of Buyers' products. Buyers are responsible for their products and applications using TI components. To minimize the risks associated with Buyers' products and applications, Buyers should provide adequate design and operating safeguards.

TI does not warrant or represent that any license, either express or implied, is granted under any patent right, copyright, mask work right, or other intellectual property right relating to any combination, machine, or process in which TI components or services are used. Information published by TI regarding third-party products or services does not constitute a license to use such products or services or a warranty or endorsement thereof. Use of such information may require a license from a third party under the patents or other intellectual property of the third party, or a license from TI under the patents or other intellectual property of TI.

Reproduction of significant portions of TI information in TI data books or data sheets is permissible only if reproduction is without alteration and is accompanied by all associated warranties, conditions, limitations, and notices. TI is not responsible or liable for such altered documentation. Information of third parties may be subject to additional restrictions.

Resale of TI components or services with statements different from or beyond the parameters stated by TI for that component or service voids all express and any implied warranties for the associated TI component or service and is an unfair and deceptive business practice. TI is not responsible or liable for any such statements.

Buyer acknowledges and agrees that it is solely responsible for compliance with all legal, regulatory and safety-related requirements concerning its products, and any use of TI components in its applications, notwithstanding any applications-related information or support that may be provided by TI. Buyer represents and agrees that it has all the necessary expertise to create and implement safeguards which anticipate dangerous consequences of failures, monitor failures and their consequences, lessen the likelihood of failures that might cause harm and take appropriate remedial actions. Buyer will fully indemnify TI and its representatives against any damages arising out of the use of any TI components in safety-critical applications.

In some cases, TI components may be promoted specifically to facilitate safety-related applications. With such components, TI's goal is to help enable customers to design and create their own end-product solutions that meet applicable functional safety standards and requirements. Nonetheless, such components are subject to these terms.

No TI components are authorized for use in FDA Class III (or similar life-critical medical equipment) unless authorized officers of the parties have executed a special agreement specifically governing such use.

Only those TI components which TI has specifically designated as military grade or "enhanced plastic" are designed and intended for use in military/aerospace applications or environments. Buyer acknowledges and agrees that any military or aerospace use of TI components which have **not** been so designated is solely at the Buyer's risk, and that Buyer is solely responsible for compliance with all legal and regulatory requirements in connection with such use.

TI has specifically designated certain components which meet ISO/TS16949 requirements, mainly for automotive use. Components which have not been so designated are neither designed nor intended for automotive use; and TI will not be responsible for any failure of such components to meet such requirements.

### Products

|                              |  |
|------------------------------|--|
| Audio                        | <a href="http://www.ti.com/audio">www.ti.com/audio</a>                               |
| Amplifiers                   | <a href="http://amplifier.ti.com">amplifier.ti.com</a>                               |
| Data Converters              | <a href="http://dataconverter.ti.com">dataconverter.ti.com</a>                       |
| DLP® Products                | <a href="http://www.dlp.com">www.dlp.com</a>   |
| DSP                          | <a href="http://dsp.ti.com">dsp.ti.com</a>   |
| Clocks and Timers            | <a href="http://www.ti.com/clocks">www.ti.com/clocks</a>                             |
| Interface                    | <a href="http://interface.ti.com">interface.ti.com</a>                               |
| Logic                        | <a href="http://logic.ti.com">logic.ti.com</a>                                       |
| Power Mgmt                   | <a href="http://power.ti.com">power.ti.com</a>                                       |
| Microcontrollers             | <a href="http://microcontroller.ti.com">microcontroller.ti.com</a>                   |
| RFID                         | <a href="http://www.ti-rfid.com">www.ti-rfid.com</a>                                 |
| OMAP Applications Processors | <a href="http://www.ti.com/omap">www.ti.com/omap</a>                                 |
| Wireless Connectivity        | <a href="http://www.ti.com/wirelessconnectivity">www.ti.com/wirelessconnectivity</a> |

### Applications

|                               |  |
|-------------------------------|--|
| Automotive and Transportation | <a href="http://www.ti.com/automotive">www.ti.com/automotive</a>                         |
| Communications and Telecom    | <a href="http://www.ti.com/communications">www.ti.com/communications</a>                 |
| Computers and Peripherals     | <a href="http://www.ti.com/computers">www.ti.com/computers</a>                           |
| Consumer Electronics          | <a href="http://www.ti.com/consumer-apps">www.ti.com/consumer-apps</a>                   |
| Energy and Lighting           | <a href="http://www.ti.com/energy">www.ti.com/energy</a>                                 |
| Industrial                    | <a href="http://www.ti.com/industrial">www.ti.com/industrial</a>                         |
| Medical                       | <a href="http://www.ti.com/medical">www.ti.com/medical</a>                               |
| Security                      | <a href="http://www.ti.com/security">www.ti.com/security</a>                             |
| Space, Avionics and Defense   | <a href="http://www.ti.com/space-avionics-defense">www.ti.com/space-avionics-defense</a> |
| Video and Imaging             | <a href="http://www.ti.com/video">www.ti.com/video</a>                                   |

### TI E2E Community

[e2e.ti.com](http://e2e.ti.com)