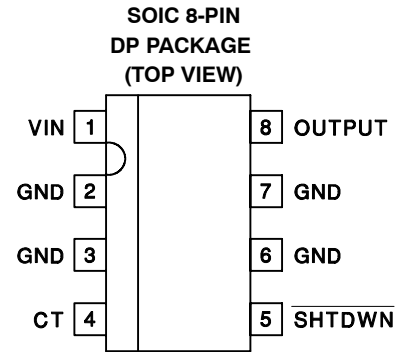


- Integrated Circuit Breaker Function
- Integrated 0.2-Ω Power FET
- 1μA I_{CC} When Disabled
- Programmable On Time
- Accurate 0.8-A (MAX) Current
- Fixed 3% Duty Cycle
- Unidirectional Switch
- Thermal Shutdown



description

The UCC39161 low-current hot-swap power manager provides complete power management, hot-swap capability, and circuit-breaker functions with minimal external components. For most applications, the only external component required to operate the device, other than supply bypassing, is a timing capacitor that sets the fault time.

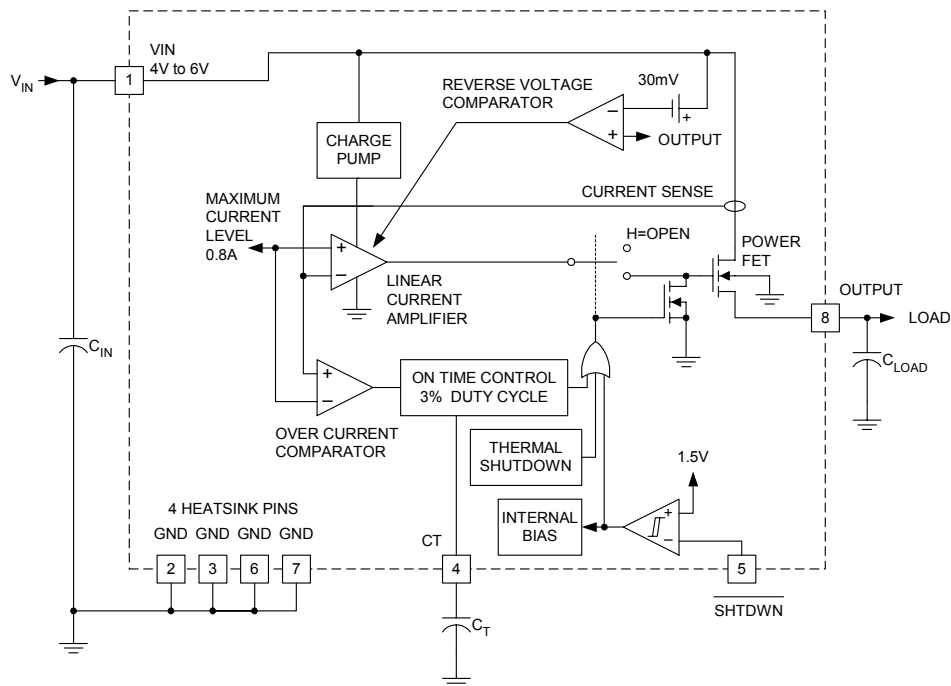
The maximum current level is internally programmed for 0.8 A. While the output current is below 0.8 A, the internal power MOSFET is switched on at a nominal 220 mΩ. When the output current exceeds 0.8 A, the MOSFET transitions from a switch to a constant current source and the fault timer starts charging CT. Once the fault time is reached, the current shuts off for a time, which equates to a 3% duty cycle.

The UCC39161 also provides unidirectional current flow, emulating a diode in series with the power MOSFET.

The UCC39161 can be put into sleep mode by grounding the SHTDWN pin. In sleep mode, the UCC39161 draws under 5 μA of supply current.

Other features include thermal shutdown and a low thermal-resistance small-outline power package.

block diagram



UDG-99168



Please be aware that an important notice concerning availability, standard warranty, and use in critical applications of Texas Instruments semiconductor products and disclaimers thereto appears at the end of this data sheet.

UCC39161

LOW CURRENT HOT SWAP POWER MANAGER

SLUS410C - NOVEMBER 1999 - REVISED FEBRUARY 2000

absolute maximum ratings over operating free-air temperature (unless otherwise noted)^{†‡}

Input voltage (VIN)	6 V
Output current, dc	Self Limiting
Output current, pulse (less than 100 ns)	20 A
Storage temperature, T _{stg}	-65°C to 150°C
Junction temperature, T _J	-55°C to 150°C
Lead temperature (soldering, 10 sec)	300°C

[†] Stresses beyond those listed under “absolute maximum ratings” may cause permanent damage to the device. These are stress ratings only, and functional operation of the device at these or any other conditions beyond those indicated under “recommended operating conditions” is not implied. Exposure to absolute-maximum-rated conditions for extended periods may affect device reliability.

[‡] Currents are positive into, negative out of the specified terminal. Consult Packaging Section of Databook for thermal limitations and considerations of packages.

electrical characteristics at T_J = 0°C to 70°C, VIN = 5 V, SHTDWN = 2.4 V, T_A = T_J (unless otherwise noted) (see Note 1)

PARAMETER	TEST CONDITIONS	MIN	TYP	MAX	UNITS
Supply Current Section					
I _{CC} supply current			1.00	2.00	mA
I _{CC} supply current (sleep mode)	SHTDWN = 0.2 V		0.50	5	μA
Output Section					
Voltage drop	I _{OUT} = 0.5 A		0.10	0.16	V
Max current		-1.0	-0.8	-0.6	A
Reverse leakage	VIN = 4.5 V, V _{OUT} = 5 V		6	20	μA
	VIN = 0 V, V _{OUT} = 5 V		0.50	9	μA
Soft start time	Initial Startup		50		μs
Short circuit response			100		ns
Fault Section					
CT charge current	V _{CT} = 1.0 V	-45	-36.0	-27	μA
CT discharge current	V _{CT} = 1.0 V	0.90	1.0	1.50	μA
Output duty cycle	V _O = 0 V	2.00	3.00	6.00	%
CT charge threshold		0.4	0.5	0.6	V
CT discharge threshold		1.2	1.4	1.8	V
Thermal shutdown			170		°C
Thermal hysteresis			10		°C
Shutdown Section					
Shutdown threshold			1.5	3.0	V
Shutdown hysteresis			150	300	mV
Shutdown bias current	SHTDWN = 1.0 V		100	500	nA

NOTE: All voltages are with respect to ground.



pin description

CT: A capacitor is applied between this pin and ground to set the maximum fault time. The maximum fault time must be more than the time to charge external capacitance. The maximum fault time is defined as:

$$T_{\text{FAULT}} = 28 \times 10^3 \times C_T$$

Once the fault time is reached the output will shutdown for a time given by:

$$T_{\text{SD}} = 1 \times 10^6 \times C_T$$

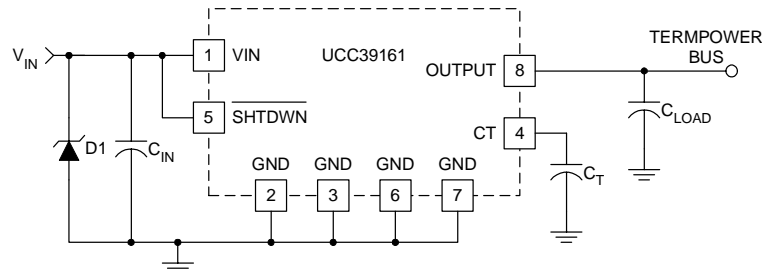
this results in a 3% duty cycle.

SHTDWN: The IC enters a low-power sleep mode when this pin is low and exits the sleep mode when this pin is high.

VIN: Input voltage to the circuit breaker, ranging from 4 V to 6 V.

VOUT: Output voltage of the circuit breaker. When switched, the output voltage is approximately:

$$V_{\text{OUT}} = V_{\text{IN}} - 220 \text{ m}\Omega \times I_{\text{OUT}}$$



UDG-99167

Figure 1. Typical Application

APPLICATION INFORMATION

protecting the ucc39161 from voltage transients

The parasitic inductance associated with the power distribution can cause a voltage spike at V_{IN} if the load current is suddenly interrupted by the UCC39161. *It is important to limit the peak of this spike to less than 6 V to prevent damage to the UCC39161.* This voltage spike can be minimized by:

- Reducing the power distribution inductance (e.g., twist the positive (+) and negative (-) leads of the power supply feeding V_{IN} , locate the power supply close to the UCC39161 or use a PCB ground plane).
- Decoupling V_{IN} with a capacitor, C_{IN} (refer to Figure 1), located close to the VIN pin. This capacitor is typically less than 1 μF to limit the inrush current.
- Clamping the voltage at V_{IN} below 6 V with a zener diode, D1 (refer to Figure 1), located close to the VIN pin.

UCC39161 LOW CURRENT HOT SWAP POWER MANAGER

SLUS410C - NOVEMBER 1999 - REVISED FEBRUARY 2000

APPLICATION INFORMATION

safety recommendations

Although the UCC39161 is designed to provide system protection for all fault conditions, all integrated circuits can ultimately fail short. For this reason, if the UCC39161 is intended for use in safety critical applications where UL™ or some other safety rating is required, a redundant safety device such as a fuse should be placed in series with the device. The UCC39161 prevents the fuse from blowing virtually all fault conditions, increasing system reliability and reducing maintenance cost, in addition to providing the hot-swap benefits of the device.



POST OFFICE BOX 655303 • DALLAS, TEXAS 75265

PACKAGING INFORMATION

Orderable Device	Status ⁽¹⁾	Package Type	Package Drawing	Pins	Package Qty	Eco Plan ⁽²⁾	Lead/Ball Finish	MSL Peak Temp ⁽³⁾
UCC39161DP	ACTIVE	SOIC	D	8	75	None	CU NIPDAU	Level-1-220C-UNLIM

⁽¹⁾ The marketing status values are defined as follows:

ACTIVE: Product device recommended for new designs.

LIFEBUY: TI has announced that the device will be discontinued, and a lifetime-buy period is in effect.

NRND: Not recommended for new designs. Device is in production to support existing customers, but TI does not recommend using this part in a new design.

PREVIEW: Device has been announced but is not in production. Samples may or may not be available.

OBSELETE: TI has discontinued the production of the device.

⁽²⁾ Eco Plan - May not be currently available - please check <http://www.ti.com/productcontent> for the latest availability information and additional product content details.

None: Not yet available Lead (Pb-Free).

Pb-Free (RoHS): TI's terms "Lead-Free" or "Pb-Free" mean semiconductor products that are compatible with the current RoHS requirements for all 6 substances, including the requirement that lead not exceed 0.1% by weight in homogeneous materials. Where designed to be soldered at high temperatures, TI Pb-Free products are suitable for use in specified lead-free processes.

Green (RoHS & no Sb/Br): TI defines "Green" to mean "Pb-Free" and in addition, uses package materials that do not contain halogens, including bromine (Br) or antimony (Sb) above 0.1% of total product weight.

⁽³⁾ MSL, Peak Temp. -- The Moisture Sensitivity Level rating according to the JEDEC industry standard classifications, and peak solder temperature.

Important Information and Disclaimer:The information provided on this page represents TI's knowledge and belief as of the date that it is provided. TI bases its knowledge and belief on information provided by third parties, and makes no representation or warranty as to the accuracy of such information. Efforts are underway to better integrate information from third parties. TI has taken and continues to take reasonable steps to provide representative and accurate information but may not have conducted destructive testing or chemical analysis on incoming materials and chemicals. TI and TI suppliers consider certain information to be proprietary, and thus CAS numbers and other limited information may not be available for release.

In no event shall TI's liability arising out of such information exceed the total purchase price of the TI part(s) at issue in this document sold by TI to Customer on an annual basis.

IMPORTANT NOTICE

Texas Instruments Incorporated and its subsidiaries (TI) reserve the right to make corrections, modifications, enhancements, improvements, and other changes to its products and services at any time and to discontinue any product or service without notice. Customers should obtain the latest relevant information before placing orders and should verify that such information is current and complete. All products are sold subject to TI's terms and conditions of sale supplied at the time of order acknowledgment.

TI warrants performance of its hardware products to the specifications applicable at the time of sale in accordance with TI's standard warranty. Testing and other quality control techniques are used to the extent TI deems necessary to support this warranty. Except where mandated by government requirements, testing of all parameters of each product is not necessarily performed.

TI assumes no liability for applications assistance or customer product design. Customers are responsible for their products and applications using TI components. To minimize the risks associated with customer products and applications, customers should provide adequate design and operating safeguards.

TI does not warrant or represent that any license, either express or implied, is granted under any TI patent right, copyright, mask work right, or other TI intellectual property right relating to any combination, machine, or process in which TI products or services are used. Information published by TI regarding third-party products or services does not constitute a license from TI to use such products or services or a warranty or endorsement thereof. Use of such information may require a license from a third party under the patents or other intellectual property of the third party, or a license from TI under the patents or other intellectual property of TI.

Reproduction of information in TI data books or data sheets is permissible only if reproduction is without alteration and is accompanied by all associated warranties, conditions, limitations, and notices. Reproduction of this information with alteration is an unfair and deceptive business practice. TI is not responsible or liable for such altered documentation.

Resale of TI products or services with statements different from or beyond the parameters stated by TI for that product or service voids all express and any implied warranties for the associated TI product or service and is an unfair and deceptive business practice. TI is not responsible or liable for any such statements.

Following are URLs where you can obtain information on other Texas Instruments products and application solutions:

Products		Applications	
Amplifiers	amplifier.ti.com	Audio	www.ti.com/audio
Data Converters	dataconverter.ti.com	Automotive	www.ti.com/automotive
DSP	dsp.ti.com	Broadband	www.ti.com/broadband
Interface	interface.ti.com	Digital Control	www.ti.com/digitalcontrol
Logic	logic.ti.com	Military	www.ti.com/military
Power Mgmt	power.ti.com	Optical Networking	www.ti.com/opticalnetwork
Microcontrollers	microcontroller.ti.com	Security	www.ti.com/security
		Telephony	www.ti.com/telephony
		Video & Imaging	www.ti.com/video
		Wireless	www.ti.com/wireless

Mailing Address: Texas Instruments
Post Office Box 655303 Dallas, Texas 75265