



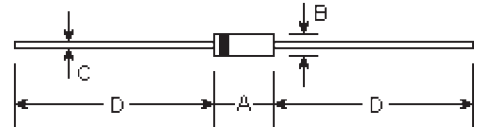
# HER101 THRU HER108

**HIGH EFFICIENCY RECTIFIER**  
**Reverse Voltage - 50 to 1000 Volts**  
**Forward Current - 1.0 Ampere**

## Features

- Low power loss, high efficiency
- Low leakage
- Low forward voltage
- High current capability
- High speed switching
- High surge capability
- High reliability

## DO-41



## Mechanical Data

- **Case:** Molded plastic
- **Epoxy:** UL94V-0 rate flame retardant
- **Lead:** MIL-STD-202E method 208C guaranteed
- **Mounting Position:** Any
- **Weight:** 0.012 ounce, 0.33 gram

DIMENSIONS					Note
DIM	inches		mm		
	Min.	Max.	Min.	Max.	
A	0.165	0.205	4.2	5.2	
B	0.079	0.106	2.0	2.7	φ
C	0.028	0.034	0.71	0.86	φ
D	1.000	-	25.40	-	

## Maximum Ratings and Electrical Characteristics

Ratings at 25°C ambient temperature unless otherwise specified.

Single phase, half wave, 60Hz, resistive or inductive load.

For capacitive load, derate current by 20%.

	Symbols	HER 101	HER 102	HER 103	HER 104	HER 105	HER 106	HER 107	HER 108	Units
Maximum repetitive peak reverse voltage	$V_{RRM}$	50	100	200	300	400	600	800	1000	Volts
Maximum RMS voltage	$V_{RMS}$	35	70	140	210	280	420	560	700	Volts
Maximum DC blocking voltage	$V_{DC}$	50	100	200	300	400	600	800	1000	Volts
Maximum average forward rectified current 0.375" (9.5mm) lead length at $T_A=50^\circ\text{C}$	$I_{(AV)}$	1.0								Amp
Peak forward surge current, 8.3mS single half sine-wave superimposed on rated load (MIL-STD-750D 4066 method)	$I_{FSM}$	30.0								Amps
Maximum instantaneous forward voltage at 1.0A DC	$V_F$	1.0		1.3		1.5		1.7		Volts
Maximum full load reverse current average, full cycle 0.375" (9.5mm) lead length at $T_L=55^\circ\text{C}$	$I_{R(AV)}$	100.0								μ A
Maximum DC reverse current at rated DC blocking voltage $T_A=25^\circ\text{C}$	$I_R$	5.0								μ A
Maximum reverse recovery time (Note 1)	$T_{rr}$	50				75				nS
Typical junction capacitance (Note 2)	$C_j$	15				12				μ F
Operating and storage temperature range	$T_J, T_{STG}$	-65 to +150								°C

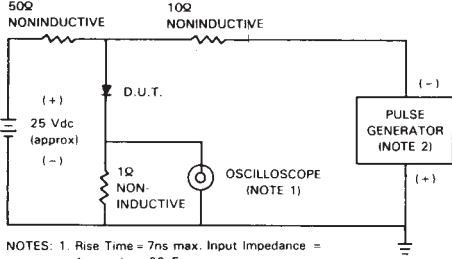
Notes:

(1) Test conditions:  $I_F=0.5A$ ,  $I_R=1.0A$ ,  $I_T=0.25A$

(2) Measured at 1.0MHz and applied reverse voltage of 4.0 volts

# RATINGS AND CHARACTERISTIC CURVES

FIG. 1 - TEST CIRCUIT DIAGRAM AND REVERSE RECOVERY TIME CHARACTERISTIC



NOTES: 1. Rise Time = 7ns max. Input Impedance = 1 megohm. 22pF.  
2. Rise Time = 10ns max. Source Impedance = 50 ohms.

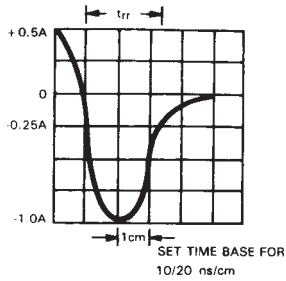


FIG. 2 - TYPICAL FORWARD CURRENT DERATING CURVE

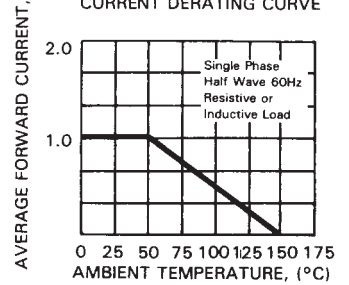


FIG. 3 - TYPICAL REVERSE CHARACTERISTICS

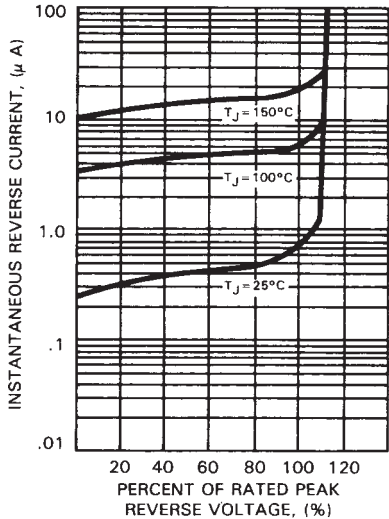


FIG. 5 - MAXIMUM NON-REPETITIVE FORWARD SURGE CURRENT

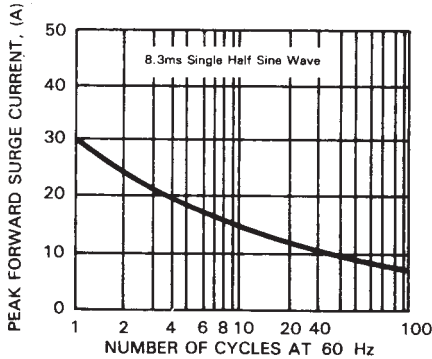


FIG. 4 - TYPICAL INSTANTANEOUS FORWARD CHARACTERISTICS

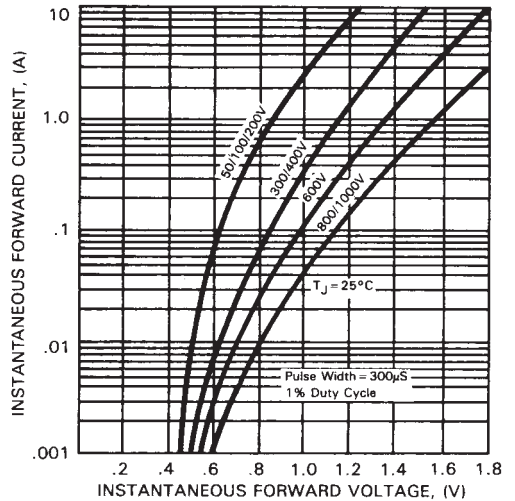


FIG. 6 - TYPICAL JUNCTION CAPACITANCE

