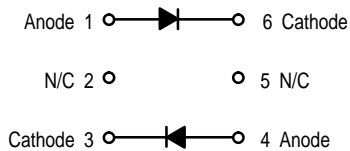


# Dual Schottky Barrier Diodes

These Schottky barrier diodes are designed for high speed switching applications, circuit protection, and voltage clamping. Extremely low forward voltage reduces conduction loss. Miniature surface mount package is excellent for hand held and portable applications where space is limited.

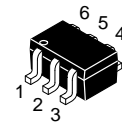
- Extremely Fast Switching Speed
- Low Forward Voltage — 0.35 V @  $I_F = 10 \text{ mAdc}$



**MBD54DWT1**

Motorola Preferred Device

**30 VOLTS  
DUAL HOT-CARRIER  
DETECTOR AND SWITCHING  
DIODES**



**CASE 419B-01, STYLE 6  
SOT-363**

## MAXIMUM RATINGS ( $T_J = 125^\circ\text{C}$ unless otherwise noted)

| Rating   | Symbol    | Value       | Unit                       |
|--|-----------|-------------|----------------------------|
| Reverse Voltage  | $V_R$     | 30          | Volts                      |
| Forward Power Dissipation<br>@ $T_A = 25^\circ\text{C}$<br>Derate above $25^\circ\text{C}$ | $P_F$     | 150<br>1.2  | mW<br>mW/ $^\circ\text{C}$ |
| Forward Current (DC)   | $I_F$     | 200 Max     | mA                         |
| Junction Temperature   | $T_J$     | 125 Max     | $^\circ\text{C}$           |
| Storage Temperature Range  | $T_{stg}$ | -55 to +150 | $^\circ\text{C}$           |

## DEVICE MARKING

MBD54DWT1 = BL

## ELECTRICAL CHARACTERISTICS ( $T_A = 25^\circ\text{C}$ unless otherwise noted) (EACH DIODE)

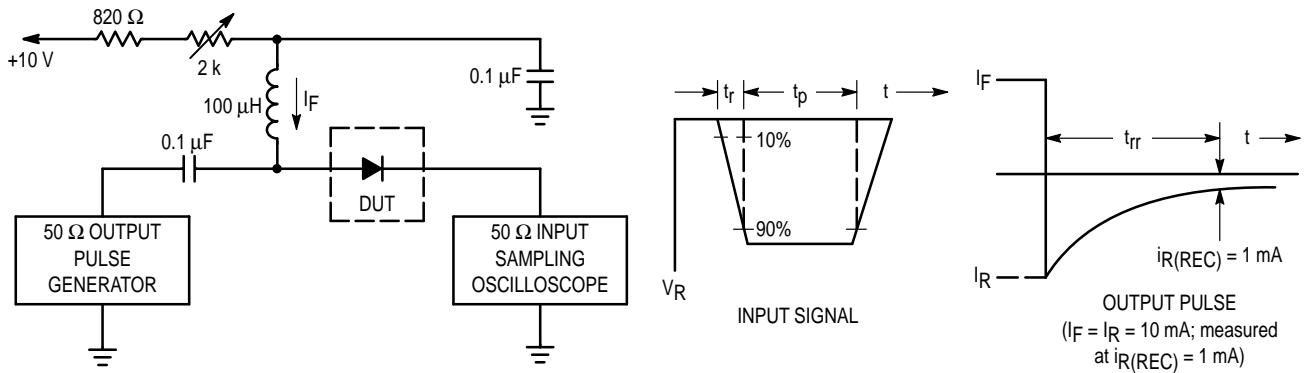
| Characteristic  | Symbol      | Min | Typ  | Max  | Unit            |
|---|-------------|-----|------|------|-----------------|
| Reverse Breakdown Voltage ( $I_R = 10 \mu\text{A}$ )  | $V_{(BR)R}$ | 30  | —    | —    | Volts           |
| Total Capacitance ( $V_R = 1.0 \text{ V}$ , $f = 1.0 \text{ MHz}$ )                                   | $C_T$       | —   | 7.6  | 10   | pF              |
| Reverse Leakage ( $V_R = 25 \text{ V}$ )  | $I_R$       | —   | 0.5  | 2.0  | $\mu\text{Adc}$ |
| Forward Voltage ( $I_F = 0.1 \text{ mAdc}$ )  | $V_F$       | —   | 0.22 | 0.24 | Vdc             |
| Forward Voltage ( $I_F = 30 \text{ mAdc}$ )   | $V_F$       | —   | 0.41 | 0.5  | Vdc             |
| Forward Voltage ( $I_F = 100 \text{ mAdc}$ )  | $V_F$       | —   | 0.52 | 1.0  | Vdc             |
| Reverse Recovery Time<br>( $I_F = I_R = 10 \text{ mAdc}$ , $I_{R(REC)} = 1.0 \text{ mAdc}$ ) Figure 1 | $t_{rr}$    | —   | —    | 5.0  | ns              |
| Forward Voltage ( $I_F = 1.0 \text{ mAdc}$ )  | $V_F$       | —   | 0.29 | 0.32 | Vdc             |
| Forward Voltage ( $I_F = 10 \text{ mAdc}$ )   | $V_F$       | —   | 0.35 | 0.40 | Vdc             |
| Forward Current (DC)  | $I_F$       | —   | —    | 200  | mAdc            |
| Repetitive Peak Forward Current   | $I_{FRM}$   | —   | —    | 300  | mAdc            |
| Non-Repetitive Peak Forward Current ( $t < 1.0 \text{ s}$ )   | $I_{FSM}$   | —   | —    | 600  | mAdc            |

Preferred devices are Motorola recommended choices for future use and best overall value.

Thermal Clad is a registered trademark of the Bergquist Company.

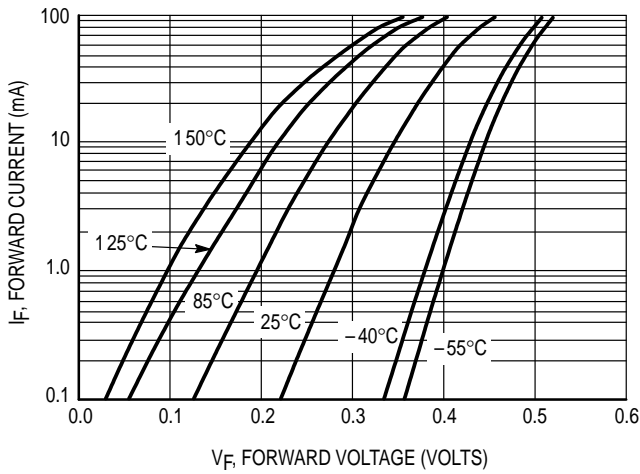
REV 3

# MBD54DWT1

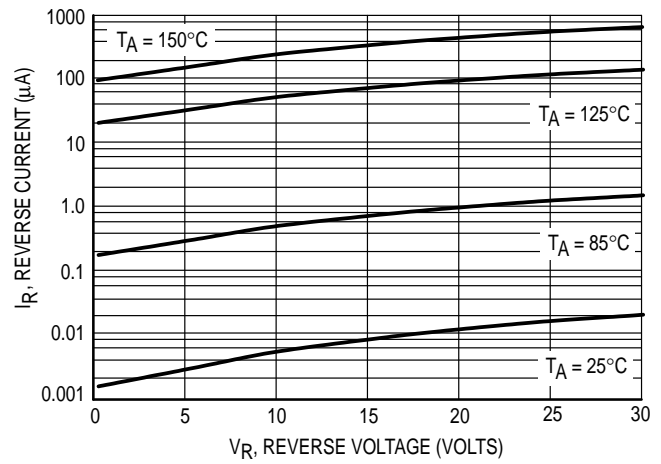


- Notes: 1. A 2.0 kΩ variable resistor adjusted for a Forward Current ( $I_F$ ) of 10 mA.  
 2. Input pulse is adjusted so  $I_{R(\text{peak})}$  is equal to 10 mA.  
 3.  $t_p \gg t_{rr}$

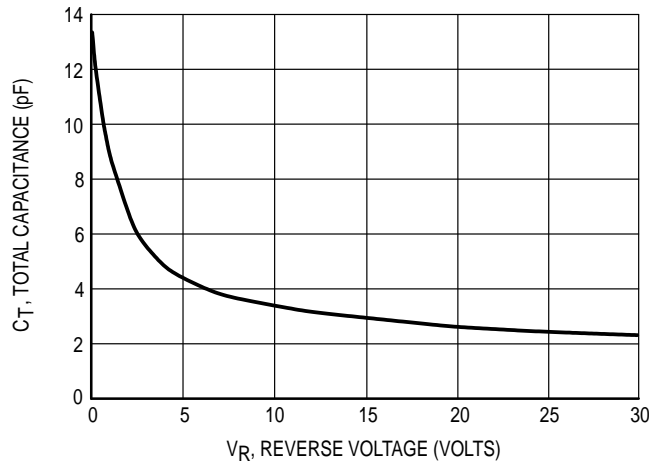
**Figure 1. Recovery Time Equivalent Test Circuit**



**Figure 2. Forward Voltage**



**Figure 3. Leakage Current**



**Figure 4. Total Capacitance**

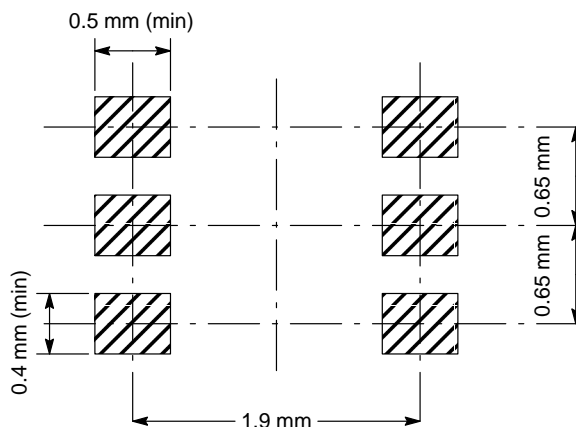
## INFORMATION FOR USING THE SOT-363 SURFACE MOUNT PACKAGE

### MINIMUM RECOMMENDED FOOTPRINT FOR SURFACE MOUNTED APPLICATIONS

Surface mount board layout is a critical portion of the total design. The footprint for the semiconductor packages must be the correct size to insure proper solder connection

interface between the board and the package. With the correct pad geometry, the packages will self align when subjected to a solder reflow process.

#### SOT-363



#### SOT-363 POWER DISSIPATION

The power dissipation of the SOT-363 is a function of the pad size. This can vary from the minimum pad size for soldering to a pad size given for maximum power dissipation. Power dissipation for a surface mount device is determined by  $T_{J(max)}$ , the maximum rated junction temperature of the die,  $R_{\theta JA}$ , the thermal resistance from the device junction to ambient, and the operating temperature,  $T_A$ . Using the values provided on the data sheet for the SOT-363 package,  $P_D$  can be calculated as follows:

$$P_D = \frac{T_{J(max)} - T_A}{R_{\theta JA}}$$

The values for the equation are found in the maximum ratings table on the data sheet. Substituting these values into the equation for an ambient temperature  $T_A$  of 25°C, one can calculate the power dissipation of the device which in this case is 150 milliwatts.

$$P_D = \frac{150^\circ\text{C} - 25^\circ\text{C}}{833^\circ\text{C/W}} = 150 \text{ milliwatts}$$

The 833°C/W for the SOT-363 package assumes the use of the recommended footprint on a glass epoxy printed circuit board to achieve a power dissipation of 150 milliwatts. There are other alternatives to achieving higher power dissipation from the SOT-363 package. Another alternative would be to use a ceramic substrate or an aluminum core board such as Thermal Clad™. Using a board material such as Thermal Clad, an aluminum core board, the power dissipation can be doubled using the same footprint.

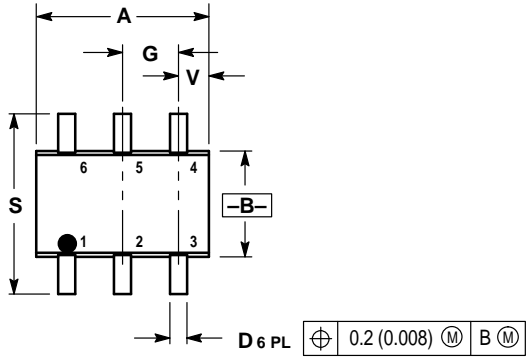
#### SOLDERING PRECAUTIONS

The melting temperature of solder is higher than the rated temperature of the device. When the entire device is heated to a high temperature, failure to complete soldering within a short time could result in device failure. Therefore, the following items should always be observed in order to minimize the thermal stress to which the devices are subjected.

- Always preheat the device.
- The delta temperature between the preheat and soldering should be 100°C or less.\*
- When preheating and soldering, the temperature of the leads and the case must not exceed the maximum temperature ratings as shown on the data sheet. When using infrared heating with the reflow soldering method, the difference shall be a maximum of 10°C.
- The soldering temperature and time shall not exceed 260°C for more than 10 seconds.
- When shifting from preheating to soldering, the maximum temperature gradient shall be 5°C or less.
- After soldering has been completed, the device should be allowed to cool naturally for at least three minutes. Gradual cooling should be used as the use of forced cooling will increase the temperature gradient and result in latent failure due to mechanical stress.
- Mechanical stress or shock should not be applied during cooling.

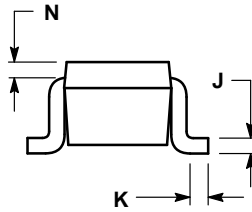
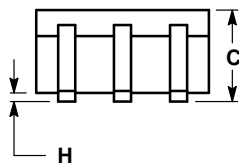
\* Soldering a device without preheating can cause excessive thermal shock and stress which can result in damage to the device.

PACKAGE DIMENSIONS



- NOTES:  
 1. DIMENSIONING AND TOLERANCING PER ANSI Y14.5M, 1982.  
 2. CONTROLLING DIMENSION: INCH.

| DIM | INCHES    |       | MILLIMETERS |      |
|-----|-----------|-------|-------------|------|
|     | MIN       | MAX   | MIN         | MAX  |
| A   | 0.071     | 0.087 | 1.80        | 2.20 |
| B   | 0.045     | 0.053 | 1.15        | 1.35 |
| C   | 0.031     | 0.043 | 0.80        | 1.10 |
| D   | 0.004     | 0.012 | 0.10        | 0.30 |
| G   | 0.026 BSC |       | 0.65 BSC    |      |
| H   | —         | 0.004 | —           | 0.10 |
| J   | 0.004     | 0.010 | 0.10        | 0.25 |
| K   | 0.004     | 0.012 | 0.10        | 0.30 |
| N   | 0.008 REF |       | 0.20 REF    |      |
| S   | 0.079     | 0.087 | 2.00        | 2.20 |
| V   | 0.012     | 0.016 | 0.30        | 0.40 |



- STYLE 6:  
 PIN 1. ANODE 2  
 2. N/C  
 3. CATHODE 1  
 4. ANODE 1  
 5. N/C  
 6. CATHODE 2

CASE 419B-01  
 ISSUE C

Motorola reserves the right to make changes without further notice to any products herein. Motorola makes no warranty, representation or guarantee regarding the suitability of its products for any particular purpose, nor does Motorola assume any liability arising out of the application or use of any product or circuit, and specifically disclaims any and all liability, including without limitation consequential or incidental damages. "Typical" parameters which may be provided in Motorola data sheets and/or specifications can and do vary in different applications and actual performance may vary over time. All operating parameters, including "Typicals" must be validated for each customer application by customer's technical experts. Motorola does not convey any license under its patent rights nor the rights of others. Motorola products are not designed, intended, or authorized for use as components in systems intended for surgical implant into the body, or other applications intended to support or sustain life, or for any other application in which the failure of the Motorola product could create a situation where personal injury or death may occur. Should Buyer purchase or use Motorola products for any such unintended or unauthorized application, Buyer shall indemnify and hold Motorola and its officers, employees, subsidiaries, affiliates, and distributors harmless against all claims, costs, damages, and expenses, and reasonable attorney fees arising out of, directly or indirectly, any claim of personal injury or death associated with such unintended or unauthorized use, even if such claim alleges that Motorola was negligent regarding the design or manufacture of the part. Motorola and are registered trademarks of Motorola, Inc. Motorola, Inc. is an Equal Opportunity/Affirmative Action Employer.

Mfax is a trademark of Motorola, Inc.

**How to reach us:**

**USA/EUROPE/Locations Not Listed:** Motorola Literature Distribution;  
 P.O. Box 5405, Denver, Colorado 80217. 303-675-2140 or 1-800-441-2447

**JAPAN:** Nippon Motorola Ltd.: SPD, Strategic Planning Office, 4-32-1,  
 Nishi-Gotanda, Shinagawa-ku, Tokyo 141, Japan. 81-3-5487-8488

**Mfax™:** RMFAX0@email.sps.mot.com – TOUCHTONE 602-244-6609  
 – US & Canada ONLY 1-800-774-1848

**ASIA/PACIFIC:** Motorola Semiconductors H.K. Ltd.; 8B Tai Ping Industrial Park,  
 51 Ting Kok Road, Tai Po, N.T., Hong Kong. 852-26629298

**INTERNET:** <http://motorola.com/sps>

