

## DS1488 Quad Line Driver

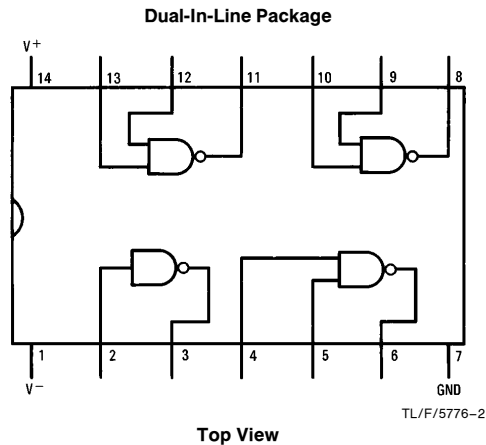
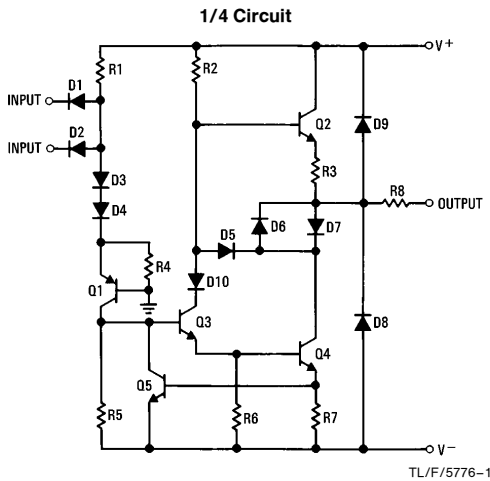
### General Description

The DS1488 is a quad line driver which converts standard TTL input logic levels through one stage of inversion to output levels which meet EIA Standard RS-232D and CCITT Recommendation V.24.

### Features

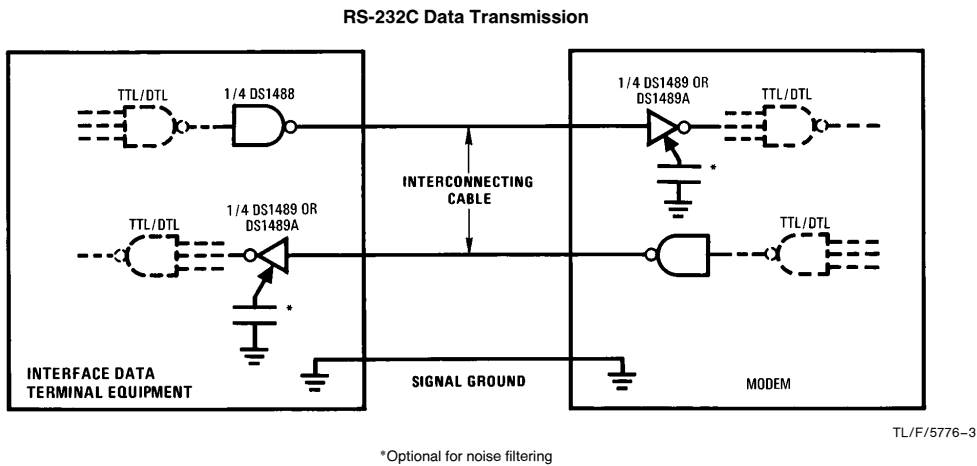
- Current limited output ± 10 mA typ
- Power-off source impedance 300Ω min
- Simple slew rate control with external capacitor
- Flexible operating supply range
- Inputs are TTL/LS compatible

### Schematic and Connection Diagrams



Order Number DS1488J, DS1488M or DS1488N  
See NS Package Number J14A, M14A or N14A

### Typical Applications



\*Optional for noise filtering

## Absolute Maximum Ratings (Note 1)

If Military/Aerospace specified devices are required, please contact the National Semiconductor Sales Office/Distributors for availability and specifications.

Supply Voltage	
V <sup>+</sup>	+15V
V <sup>-</sup>	-15V
Input Voltage (V <sub>IN</sub> )	-15V ≤ V <sub>IN</sub> ≤ 7.0V
Output Voltage	±15V
Operating Temperature Range	0°C to +75°C

Storage Temperature Range	-65°C to +150°C
Maximum Power Dissipation* at 25°C	
Cavity Package	1364 mW
Molded DIP Package	1280 mW
SO Package	974 mW
Lead Temperature (Soldering, 4 sec.)	260°C
*Derate cavity package 9.1 mW/°C above 25°C; derate molded DIP package 10.2 mW/°C above 25°C; derate SO package 7.8 mW/°C above 25°C.	

## Electrical Characteristics (Notes 2 and 3) V<sub>CC+</sub> = 9V, V<sub>CC-</sub> = -9V unless otherwise specified

Symbol	Parameter	Conditions	Min	Typ	Max	Units
I <sub>IL</sub>	Logical "0" Input Current	V <sub>IN</sub> = 0V		-1.0	-1.3	mA
I <sub>IH</sub>	Logical "1" Input Current	V <sub>IN</sub> = +5.0V		0.005	10.0	μA
V <sub>OH</sub>	High Level Output Voltage	R <sub>L</sub> = 3.0 kΩ, V <sub>IN</sub> = 0.8V	V <sup>+</sup> = 9.0V, V <sup>-</sup> = -9.0V V <sup>+</sup> = 13.2V, V <sup>-</sup> = -13.2V	6.0 9.0	7.0 10.5	V
V <sub>OL</sub>	Low Level Output Voltage	R <sub>L</sub> = 3.0 kΩ, V <sub>IN</sub> = 1.9V	V <sup>+</sup> = 9.0V, V <sup>-</sup> = -9.0V V <sup>+</sup> = 13.2V, V <sup>-</sup> = -13.2V	-6.0 -9.0	-6.8 -10.5	V
I <sub>OS</sub> <sup>+</sup>	High Level Output Short-Circuit Current	V <sub>OUT</sub> = 0V, V <sub>IN</sub> = 0.8V	-6.0	-10.0	-12.0	mA
I <sub>OS</sub> <sup>-</sup>	Low Level Output Short-Circuit Current	V <sub>OUT</sub> = 0V, V <sub>IN</sub> = 1.9V	6.0	10.0	12.0	mA
R <sub>OUT</sub>	Output Resistance	V <sup>+</sup> = V <sup>-</sup> = 0V, V <sub>OUT</sub> = ±2V	300			Ω
I <sub>CC</sub> <sup>+</sup>	Positive Supply Current (Output Open)	V <sub>IN</sub> = 1.9V	V <sup>+</sup> = 9.0V, V <sup>-</sup> = -9.0V V <sup>+</sup> = 12V, V <sup>-</sup> = -12V V <sup>+</sup> = 15V, V <sup>-</sup> = -15V	15.0 19.0 25.0	20.0 25.0 34.0	mA
		V <sub>IN</sub> = 0.8V	V <sup>+</sup> = 9.0V, V <sup>-</sup> = -9.0V V <sup>+</sup> = 12V, V <sup>-</sup> = -12V V <sup>+</sup> = 15V, V <sup>-</sup> = -15V	4.5 5.5 8.0	6.0 7.0 12.0	mA
I <sub>CC</sub> <sup>-</sup>	Negative Supply Current (Output Open)	V <sub>IN</sub> = 1.9V	V <sup>+</sup> = 9.0V, V <sup>-</sup> = -9.0V V <sup>+</sup> = 12V, V <sup>-</sup> = -12V V <sup>+</sup> = 15V, V <sup>-</sup> = -15V	-13.0 -18.0 -25.0	-17.0 -23.0 -34.0	mA
		V <sub>IN</sub> = 0.8V	V <sup>+</sup> = 9.0V, V <sup>-</sup> = -9.0V V <sup>+</sup> = 12V, V <sup>-</sup> = -12V V <sup>+</sup> = 15V, V <sup>-</sup> = -15V	-0.001 -0.001 -0.01	-0.015 -0.015 -2.5	mA
P <sub>d</sub>	Power Dissipation	V <sup>+</sup> = 9.0V, V <sup>-</sup> = -9.0V V <sup>+</sup> = 12V, V <sup>-</sup> = -12V		252 444	333 576	mW

## Switching Characteristics (V<sub>CC</sub> = 9V, V<sub>EE</sub> = -9V, T<sub>A</sub> = 25°C)

Symbol	Parameter	Conditions	Min	Typ	Max	Units
t <sub>pd1</sub>	Propagation Delay to a Logical "1"	R <sub>L</sub> = 3.0 kΩ, C <sub>L</sub> = 15 pF, T <sub>A</sub> = 25°C		230	350	ns
t <sub>pd0</sub>	Propagation Delay to a Logical "0"	R <sub>L</sub> = 3.0 kΩ, C <sub>L</sub> = 15 pF, T <sub>A</sub> = 25°C		70	175	ns
t <sub>r</sub>	Rise Time	R <sub>L</sub> = 3.0 kΩ, C <sub>L</sub> = 15 pF, T <sub>A</sub> = 25°C		75	100	ns
t <sub>f</sub>	Fall Time	R <sub>L</sub> = 3.0 kΩ, C <sub>L</sub> = 15 pF, T <sub>A</sub> = 25°C		40	75	ns

**Note 1:** "Absolute Maximum Ratings" are those values beyond which the safety of the device cannot be guaranteed. Except for "Operating Temperature Range" they are not meant to imply that the devices should be operated at these limits. The table of "Electrical Characteristics" provides conditions for actual device operation.

**Note 2:** Unless otherwise specified min/max limits apply across the 0°C to +75°C temperature range for the DS1488.

**Note 3:** All currents into device pins shown as positive, out of device pins as negative, all voltages referenced to ground unless otherwise noted. All values shown as max or min on absolute value basis.

## Applications

By connecting a capacitor to each driver output the slew rate can be controlled utilizing the output current limiting characteristics of the DS1488. For a set slew rate the appropriate capacitor value may be calculated using the following relationship

$$C = I_{SC} (\Delta T / \Delta V)$$

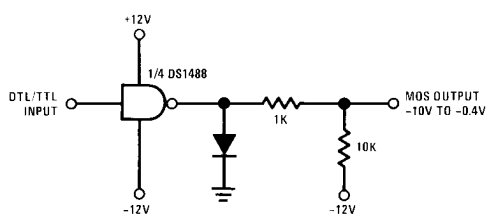
where C is the required capacitor,  $I_{SC}$  is the short circuit current value, and  $\Delta V / \Delta T$  is the slew rate.

RS-232C specifies that the output slew rate must not exceed 30V per microsecond. Using the worst case output short circuit current of 12 mA in the above equation, calculations result in a required capacitor of 400 pF connected to each output.

See Typical Performance Characteristics.

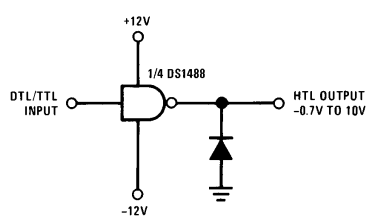
## Typical Applications (Continued)

**DTL/TTL-to-MOS Translator**



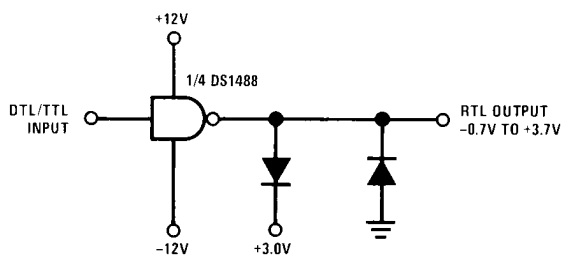
TL/F/5776-4

**DTL/TTL-to-HTL Translator**



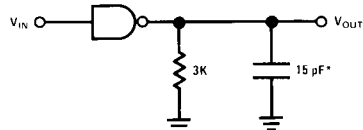
TL/F/5776-5

**DTL/TTL-to-RTL Translator**



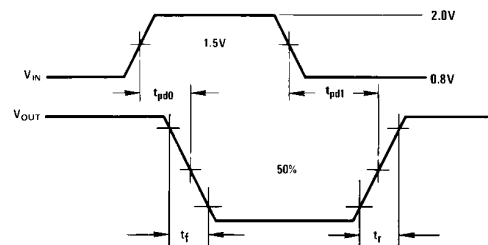
TL/F/5776-6

## AC Load Circuit and Switching Time Waveforms



TL/F/5776-7

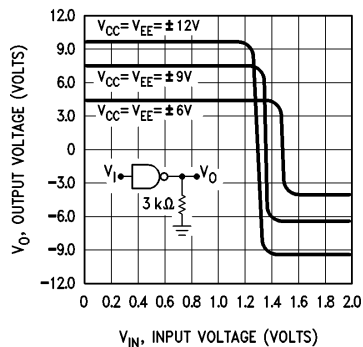
\* $C_L$  includes probe and jig capacitance.



$t_r$  and  $t_f$  are measured between 10% and 90% of the output waveform.

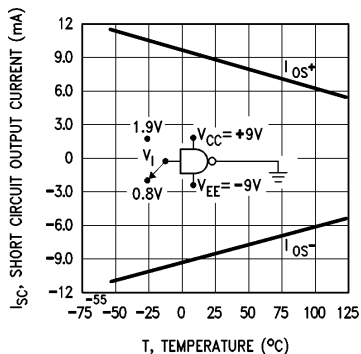
TL/F/5776-8

**Typical Performance Characteristics**  $T_A = +25^\circ\text{C}$  unless otherwise noted



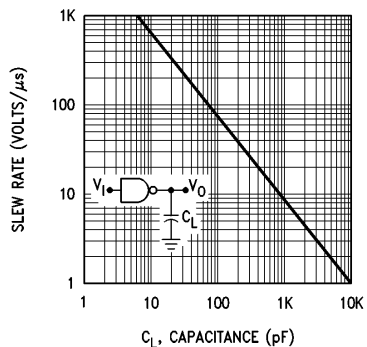
**FIGURE 1. Transfer Characteristics vs Power Supply Voltage**

TL/F/5776-9



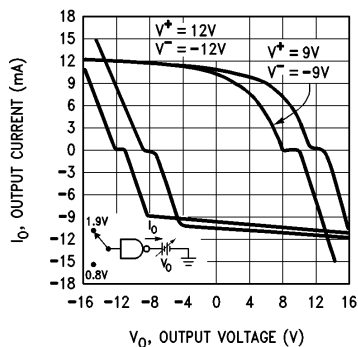
**FIGURE 2. Short-Circuit Output Current vs Temperature**

TL/F/5776-10



**FIGURE 3. Output Slew Rate vs Load Capacitance**

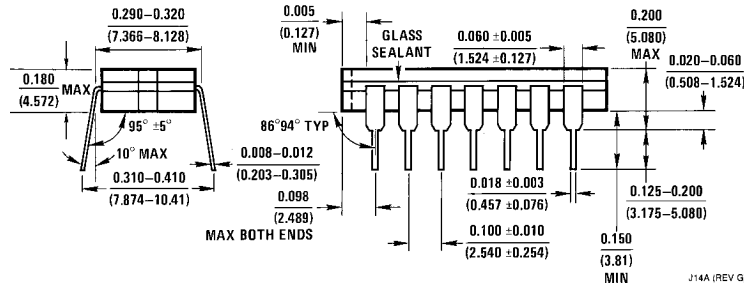
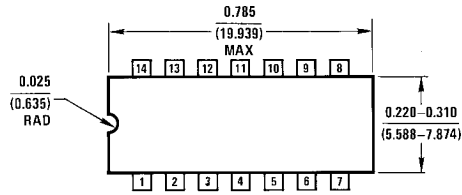
TL/F/5776-11



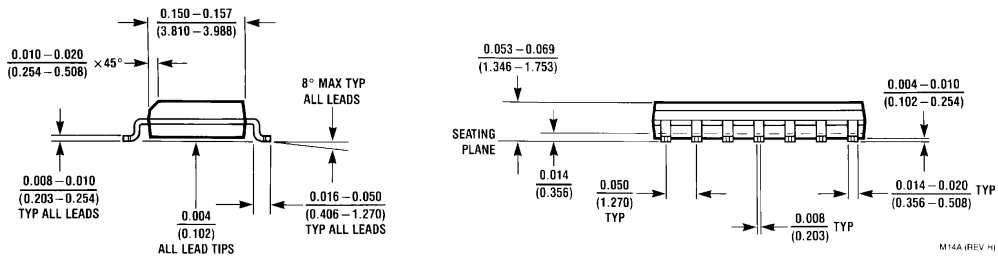
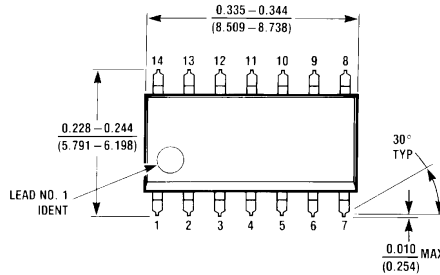
**FIGURE 4. Output Voltage and Current-Limiting Characteristics**

TL/F/5776-12

**Physical Dimensions** inches (millimeters)

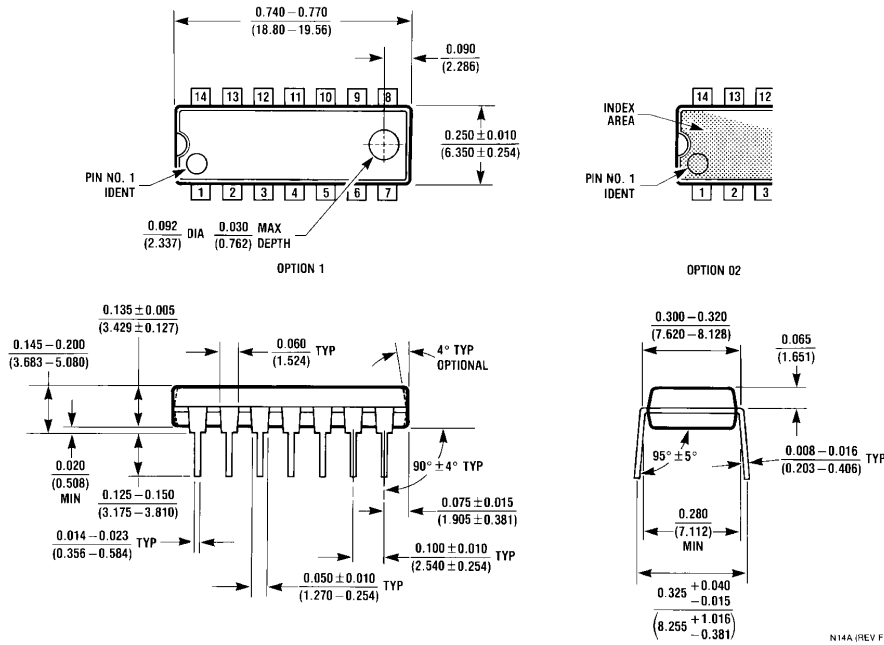


**Ceramic Dual-In-Line Package (J)**  
**Order Number DS1488J**  
**NS Package Number J14A**



**SO Package (M)**  
**Order Number DS1488M**  
**NS Package Number M14A**

**Physical Dimensions** inches (millimeters)



**Molded Dual-In-Line Package (N)**  
**Order Number DS1488N**  
**NS Package Number N14A**

N14A (REV F)

**LIFE SUPPORT POLICY**

NATIONAL'S PRODUCTS ARE NOT AUTHORIZED FOR USE AS CRITICAL COMPONENTS IN LIFE SUPPORT DEVICES OR SYSTEMS WITHOUT THE EXPRESS WRITTEN APPROVAL OF THE PRESIDENT OF NATIONAL SEMICONDUCTOR CORPORATION. As used herein:

1. Life support devices or systems are devices or systems which, (a) are intended for surgical implant into the body, or (b) support or sustain life, and whose failure to perform, when properly used in accordance with instructions for use provided in the labeling, can be reasonably expected to result in a significant injury to the user.
2. A critical component is any component of a life support device or system whose failure to perform can be reasonably expected to cause the failure of the life support device or system, or to affect its safety or effectiveness.



**National Semiconductor Corporation**  
 1111 West Bardin Road  
 Arlington, TX 76017  
 Tel: 1(800) 272-9959  
 Fax: 1(800) 737-7018

<http://www.national.com>

**National Semiconductor Europe**

Fax: +49 (0) 180-530 85 86  
 Email: [europe.support@nsc.com](mailto:europe.support@nsc.com)  
 Deutsch Tel: +49 (0) 180-530 85 85  
 English Tel: +49 (0) 180-532 78 32  
 Français Tel: +49 (0) 180-532 93 58  
 Italiano Tel: +49 (0) 180-534 16 80

**National Semiconductor Hong Kong Ltd.**

19th Floor, Straight Block,  
 Ocean Centre, 5 Canton Rd.  
 Tsimshatsui, Kowloon  
 Hong Kong  
 Tel: (852) 2737-1600  
 Fax: (852) 2736-9960

**National Semiconductor Japan Ltd.**

Tel: 81-043-299-2308  
 Fax: 81-043-299-2408