

# F100350

## Low Power Hex D-Latch

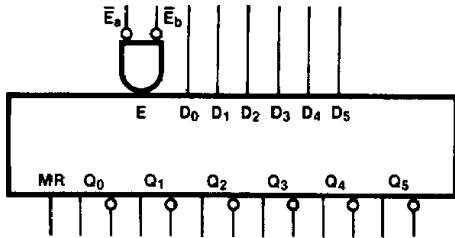
### General Description

The F100350 contains six D-type latches with true and complement outputs, a pair of common Enables ( $\bar{E}_a$  and  $\bar{E}_b$ ), and a common Master Reset (MR). A Q output follows its D input when both  $\bar{E}_a$  and  $\bar{E}_b$  are LOW. When either  $\bar{E}_a$  or  $\bar{E}_b$  (or both) are HIGH, a latch stores the last valid data present on its D input before  $\bar{E}_a$  or  $\bar{E}_b$  went HIGH. The MR input overrides all other inputs and makes the Q outputs LOW. All inputs have 50 k $\Omega$  pull-down resistors.

### Features

- 20% power reduction of the F100150
- 2000V ESD protection
- Pin/function compatible with F100150
- Voltage compensated operating range = -4.2V to -5.7V

### Logic Symbol



TL/F/9884-10

Pin Names	Description
D <sub>0</sub> -D <sub>5</sub>	Data Inputs
$\bar{E}_a, \bar{E}_b$	Common Enable Inputs (Active LOW)
MR	Asynchronous Master Reset Input
Q <sub>0</sub> -Q <sub>5</sub>	Data Outputs
$\bar{Q}_0$ - $\bar{Q}_5$	Complementary Data Outputs

### Connection Diagrams

