

### Switchmode Power Rectifiers

Designed for use in switching power supplies, inverters and as free wheeling diodes. These state-of-the-art devices have the following features:

- \* High Surge Capacity
- \* Low Power Loss, High efficiency
- \* Glass Passivated chip junctions
- \* 150 Operating Junction Temperature
- \* Low Stored Charge Majority Carrier Conduction
- \* Low Forward Voltage , High Current Capability
- \* Ultrafast 100 Nanosecond Recovery Time
- \* Plastic Material used Carries Underwriters Laboratory Flammability Classification 94V-O

**ULTRAFAST  
RECTIFIERS**

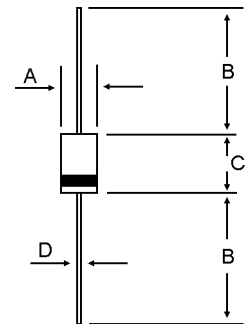
**2.0 AMPERES  
600-1000 VOLTS**



**DO-41**

### MAXIMUM RATINGS

Characteristic	Symbol	HER206	HER207	HER208	Unit
Peak Repetitive Reverse Voltage Working Peak Reverse Voltage DC Blocking Voltage	$V_{RRM}$ $V_{RWM}$ $V_{R50}$	600	800	1000	V
RMS Reverse Voltage	$V_{R(RMS)}$	420	560	700	V
Average Rectifier Forward Current	$I_O$	2.0			A
Non-Repetitive Peak Surge Current (Surge applied at rate load conditions halfwave, single phase,60Hz )	$I_{FSM}$	30			A
Operating and Storage Junction Temperature Range	$T_J, T_{STG}$	-65 to +150			



DIM	MILLIMETERS	
	MIN	MAX
A	2.00	2.70
B	25.40	
C	4.10	5.20
D	0.70	0.90

### ELECTRIAL CHARACTERISTICS

Characteristic	Symbol	HER206	HER207	HER208	Unit
Maximum Instantaneous Forward Voltage ( $I_F=2.0$ Amp, $T_C = 25$ )	$V_F$	1.50		1.75	V
Maximum Instantaneous Reverse Current (Rated DC Voltage, $T_C = 25$ ) (Rated DC Voltage, $T_C = 125$ )	$I_R$		5.0 50		$\mu A$
Reverse Recovery Time ( $I_F = 0.5$ A, $I_R = 1.0$ , $I_{rr} = 0.25$ A )	$T_{rr}$		100		ns
Typical Junction Capacitance (Reverse Voltage of 4 volts & $f=1$ MHz)	$C_P$	15		10	pF

CASE---  
Transfer molded  
plastic

POLARITY---  
Cathode indicated  
polarity band

# HER206 Thru HER208

FIG-1 TYPICAL FORWARD CHARACTERISTICS

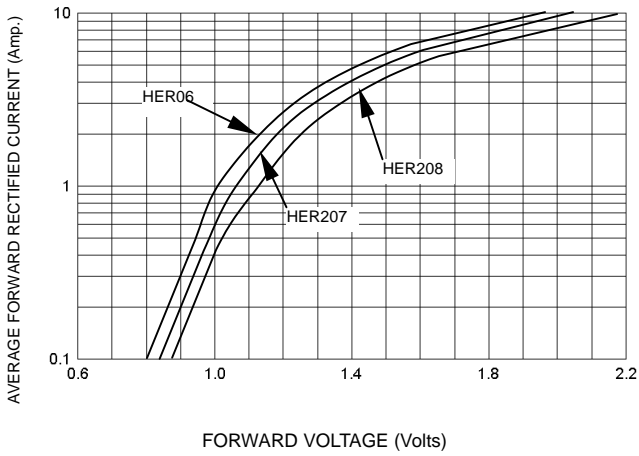


FIG-3 FORWARD CURRENT DERATING CURVE

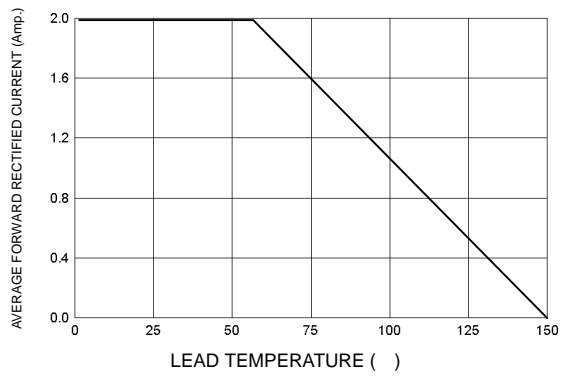


FIG-2 TYPICAL REVERSE CHARACTERISTICS

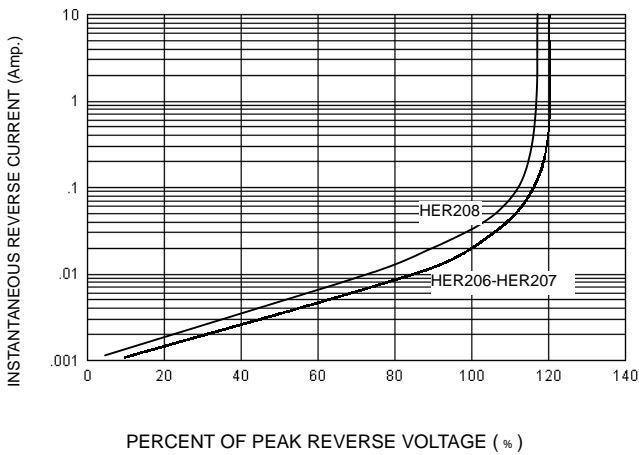


FIG-4 TYPICAL JUNCTION CAPACITANCE

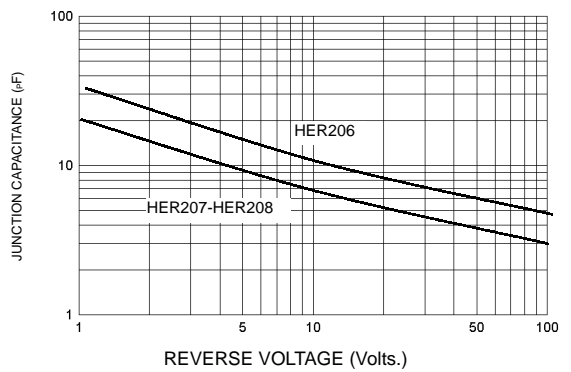
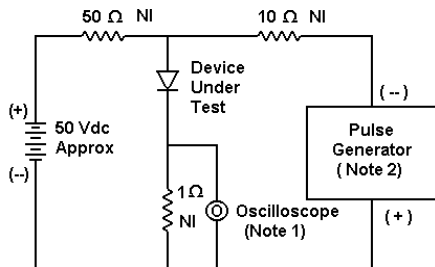
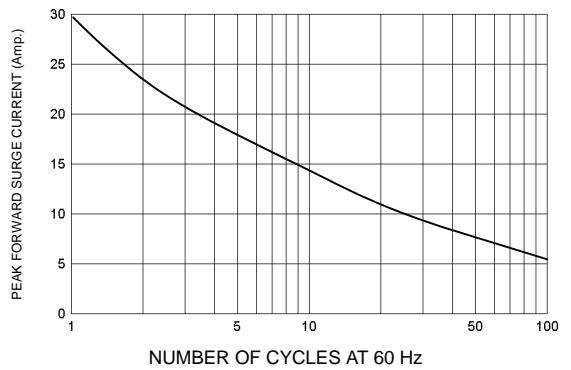
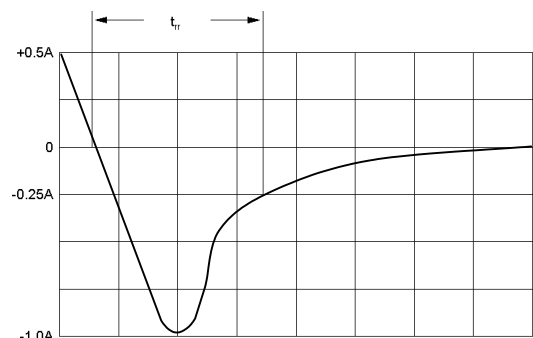


FIG-5 PEAK FORWARD SURGE CURRENT



- Notes:  
 1. Rise Time = 7 ns max. Input Impedance = 1 M Ω , 22 pF  
 2. Rise Time = 10 ns max. Input Impedance = 50 Ω



Set time base for 20/50 ns/cm

FIG-6 Reverse Recovery Time Characteristic and Test Circuit Diagram