




HER301 THRU HER308

3.0 AMPS. HIGH EFFICIENCY RECTIFIERS



FEATURES

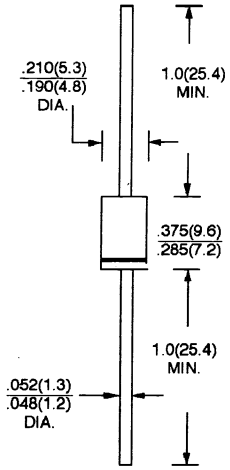
- * Low forward voltage drop
- * High current capability
- * High reliability
- * High surge current capability

MECHANICAL DATA

- * Case: Molded plastic
- * Epoxy: UL 94V-0 rate flame retardant
- * Lead: Axial leads, solderable per MIL-STD-202, method 208 guaranteed
- * Polarity: Color band denotes cathode end
- * Mounting Position: Any
- * Weight: 1.18 grams

VOLTAGE RANGE
50 to 1000 Volts
CURRENT
3.0 Amperes

DO-201AD



Dimensions in inches and (millimeters)

MAXIMUM RATINGS AND ELECTRICAL CHARACTERISTICS

Rating at 25°C ambient temperature unless otherwise specified.
Single phase, half wave, 60 Hz, resistive or inductive load.
For capacitive load, derate current by 20%

TYPE NUMBER	SYMBOLS	HER 301	HER 302	HER 303	HER 304	HER 305	HER 306	HER 307	HER 308	UNITS	
Maximum Recurrent Peak Reverse Voltage	V_{RRM}	50	100	200	300	400	600	800	1000	V	
Maximum RMS Voltage	V_{RMS}	35	70	140	210	280	420	560	700	V	
Maximum D. C Blocking Voltage	V_{DC}	50	100	200	300	400	600	800	1000	V	
Maximum Average Forward Rectified Current .375" (9.5mm) lead length @ $T_A = 55^\circ\text{C}$ (Note 1)	$I_{F(AV)}$	3.0								A	
Peak Forward Surge Current, 8.3 ms single half sine-wave superimposed on rated load (JEDEC method)	I_{FSM}	125								A	
Maximum Instantaneous Forward Voltage at 3.0A (Note 1)	V_F	1.0			1.3		1.7			V	
Maximum D. C Reverse Current @ $T_A = 25^\circ\text{C}$ at Rated D. C Blocking Voltage @ $T_A = 100^\circ\text{C}$	I_R	10.0 200								μA μA	
Maximum Reverse Recovery Time (Note 2)	T_{RR}	50					75				nS
Typical Junction Capacitance (Note 3)	C_J	80					50				pF
Operating Temperature Range	T_J	-65 to +125								$^\circ\text{C}$	
Storage Temperature Range	T_{STG}	-65 to +150								$^\circ\text{C}$	

NOTES: 1. Each Lead mounted on a 0.8×0.8×0.04" (20×20×1mm) copper heat - sink.
2. Reverse Recovery Test Conditions: $I_F = 0.5\text{A}$, $I_R = 1.0\text{A}$, $I_{RR} = 0.25\text{A}$.
3. Measured at 1 MHz and applied reverse voltage of 4.0V D.C.

RATINGS AND CHARACTERISTIC CURVES (HER301 THRU HER308)

FIG. 1 - TEST CIRCUIT DIAGRAM AND REVERSE RECOVERY TIME CHARACTERISTICS

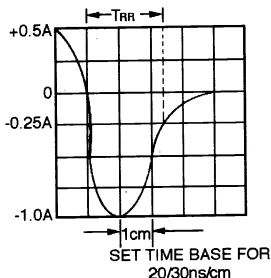
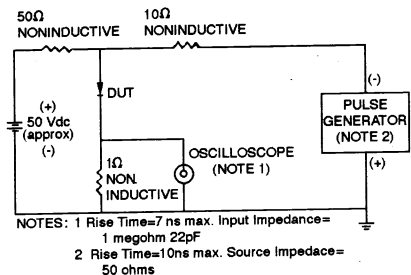


FIG. 2 - TYPICAL FORWARD CURRENT DERATING CURVE

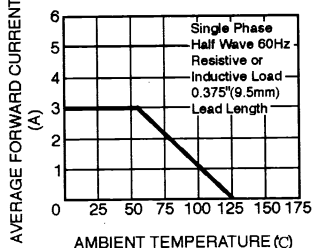


FIG. 3 - TYPICAL REVERSE CHARACTERISTICS

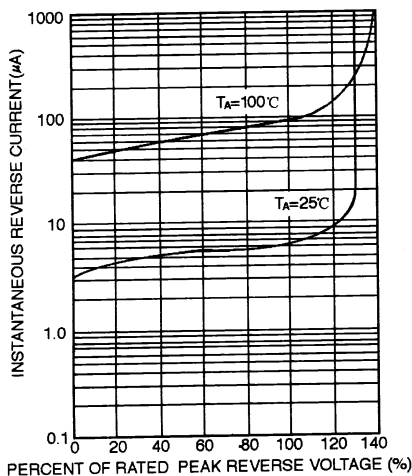


FIG. 4 - TYPICAL FORWARD CHARACTERISTICS

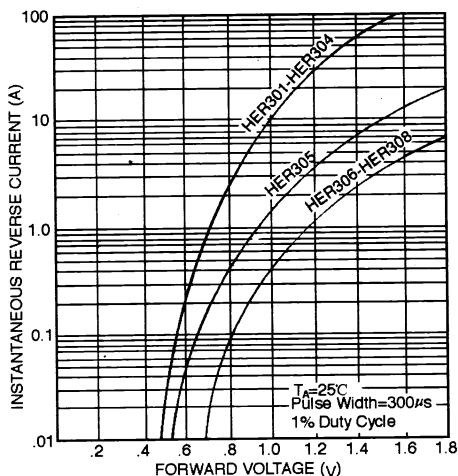


FIG. 5 - MAXIMUM NON-REPETITIVE FORWARD SURGE CURRENT

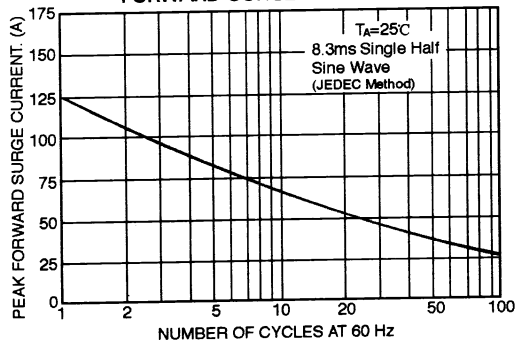


FIG. 6 - TYPICAL JUNCTION CAPACITANCE

