

200 V - 1,000 V Rectifiers

1.5 A Forward Current
2000 ns Recovery Time

**1N5614U 1N5616U
1N5618U 1N5620U
1N5622U**

**SURFACE MOUNT
HERMETICALLY SEALED**



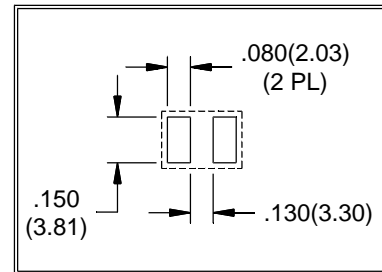
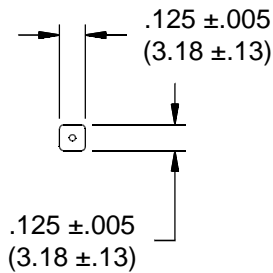
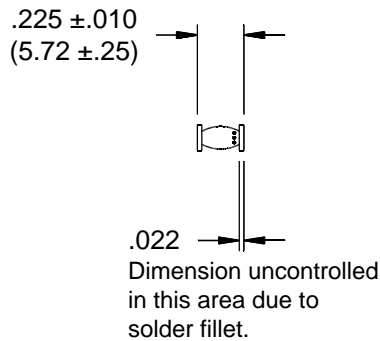
ELECTRICAL CHARACTERISTICS AND MAXIMUM RATINGS

Part Number	Working Reverse Voltage (V _{rw})	Average Rectified Current (I _o)		Reverse Current @ V _{rw} (I _r)		Forward Voltage (V _f)		1 Cycle Surge Current t _p =8.3ms (I _{fsm})	Repetitive Surge Current (I _{frm})	Reverse Recovery Time (3) (T _{rr})	Thermal Impd. θ _{J-C}	Junction Cap. @50VDC @1kHz (C _j)
		55°C(1)	100°C(2)	25°C	100°C	25°C	25°C	25°C	25°C	25°C	25°C	25°C
	Volts	Amps	Amps	µA	µA	Volts	Amps	Amps	Amps	ns	°C/W	pF
1N5614U	200	1.50	0.75	0.5	25	1.3	3.0	30	10	2000	5	16
1N5616U	400	1.50	0.75	0.5	25	1.3	3.0	30	10	2000	5	16
1N5618U	600	1.50	0.75	0.5	25	1.3	3.0	30	10	2000	5	16
1N5620U	800	1.50	0.75	0.5	25	1.3	3.0	30	10	2000	5	16
1N5622U	1000	1.50	0.75	0.5	25	1.3	3.0	30	10	2000	5	16

(1)TC=55°C (2)TC=100°C (3)I_f=0.5A, I_r=1.0A, I_{rr}=0.25A *Op. Temp.= -65°C to +175°C Stg. Temp.= -65°C to +200°C

6

Markings:
Three Dots for polarity.



Dimensions: In. (mm) • All temperatures are ambient unless otherwise noted. • Data subject to change without notice.



VOLTAGE MULTIPLIERS INC.
8711 W. Roosevelt Ave.
Visalia, CA 93291

TEL 559-651-1402
FAX 559-651-0740
www.voltagemultipliers.com

1N5614U 1N5616U 1N5618U 1N5620U 1N5622U

