

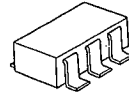
SINGLE OPERATIONAL AMPLIFIER

■ GENERAL DESCRIPTION

NJM 2107F is a single operational amplifier of ultra miniature surface mount package.

NJM 2107F has features of low operating supply voltage and low saturation output voltage. The NJM2107F is suitable for small electronic equipments and hybrid circuits.

■ PACKAGE OUTLINE

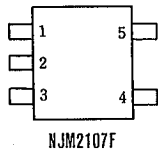


NJM2107F

■ FEATURE

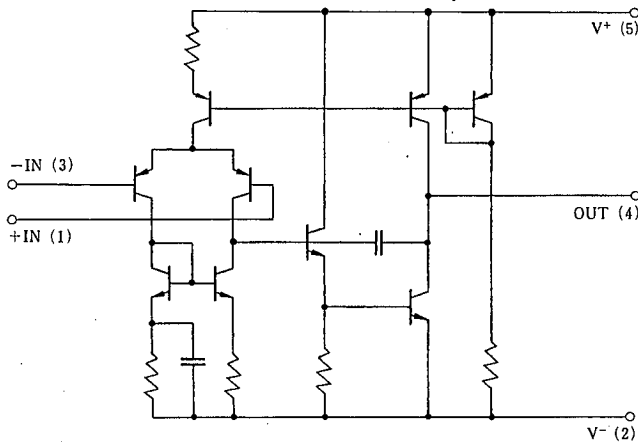
- Operating Voltage  $(V^+/V^- = \pm 1.0V \text{ to } \pm 3.5V)$
- Low Output Saturation :  $4V_{P-P}$  at single 5V supply
- V<sup>-</sup> Shield Plate between +Input and -Input
- Suitable Pin Arrangement for Application
- Mounted in Ultra Miniature 2.9×1.5mm : (1/5 of DMP-8 package)
- Bipolar Technology

■ PIN CONFIGURATION



- Pin Function
- 1 . +INPUT
  - 2 . V<sup>-</sup>
  - 3 . -INPUT
  - 4 . OUTPUT
  - 5 . V<sup>+</sup>

■ EQUIVALENT CIRCUIT



4

■ ABSOLUTE MAXIMUM RATINGS

(Ta=25°C)

PARAMETER	SYMBOL	RATINGS	UNIT
Supply Voltage	V <sup>+</sup> V <sup>-</sup>	±3.5	V
Differential Input Voltage	V <sub>ID</sub>	±7	V
Input Voltage	V <sub>IC</sub>	±3.5	V
Power Dissipation	P <sub>D</sub>	200	mW
Operating Temperature Range	T <sub>opr</sub>	-40 ~ +85	°C
Storage Temperature Range	T <sub>stg</sub>	-40 ~ +125	°C

■ ELECTRICAL CHARACTERISTICS

(V<sup>+</sup>/V<sup>-</sup>=±2.5V, Ta=25°C)

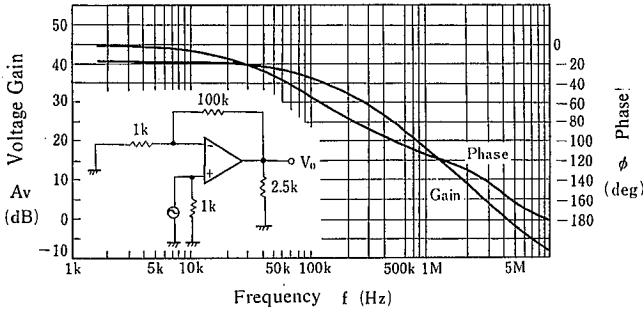
PARAMETER	SYMBOL	TEST CONDITION	MIN.	TYP.	MAX.	UNIT
Input Offset Voltage	V <sub>IO</sub>	R <sub>S</sub> =10kΩ	-	1	6	mV
Input Offset Current	I <sub>IO</sub>	I <sup>+</sup> -I <sup>-</sup>	-	5	200	nA
Input Bias Current	I <sub>B</sub>		-	100	500	nA
Input Common Mode Voltage Range	V <sub>ICM</sub>		±1.5	-	-	V
Large Signal Voltage Gain	A <sub>V</sub>	R <sub>L</sub> =10kΩ, V <sub>O</sub> =±2.0V	60	80	-	dB
Output Voltage Swing	V <sub>OM</sub>	R <sub>L</sub> =2.5kΩ	±2.0	±2.2	-	V
Common Mode Rejection Ratio	CMR	R <sub>S</sub> ≤10kΩ	60	80	-	dB
Supply Voltage Rejection Ratio	SVR	R <sub>S</sub> ≤10KΩ	60	70	-	dB
Slew Rate	SR	V <sub>IN</sub> =±1V <sub>P-P</sub> , A <sub>CL</sub> =+1	-	3	-	V/μs
Operating Current	I <sub>CC</sub>		1	2	3	mA

4

## TYPICAL CHARACTERISTICS

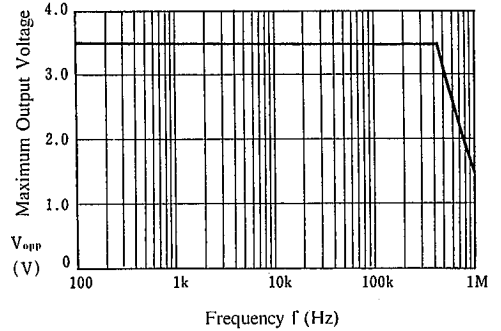
### Voltage Gain, Phase vs. Frequency

( $V^+/V^- = \pm 2.5V$ ,  $T_a = 25^\circ C$ )



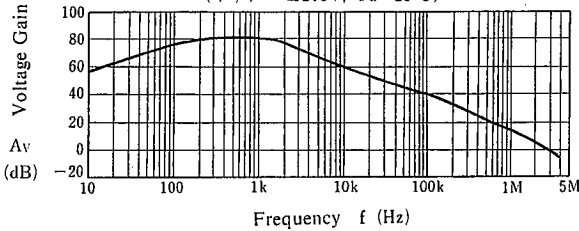
### Maximum Output Voltage vs. Frequency

( $V^+/V^- = \pm 2.5V$ ,  $R = 2.5k\Omega$ ,  $T_a = 25^\circ C$ )

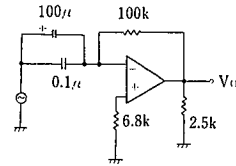


### Voltage Gain, vs. Frequency

( $V^+/V^- = \pm 2.5V$ ,  $T_a = 25^\circ C$ )

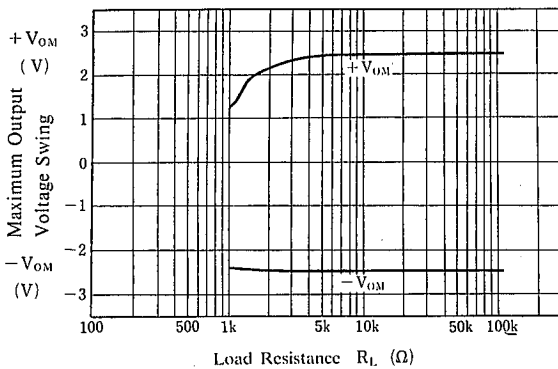


### Test Circuit



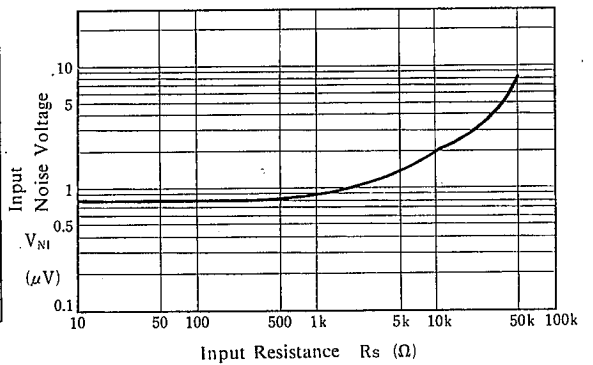
### Maximum Output Voltage Swing vs. Load Resistance

( $V^+/V^- = \pm 2.5V$ ,  $T_a = 25^\circ C$ )



### Input Noise Voltage vs. Input Resistance

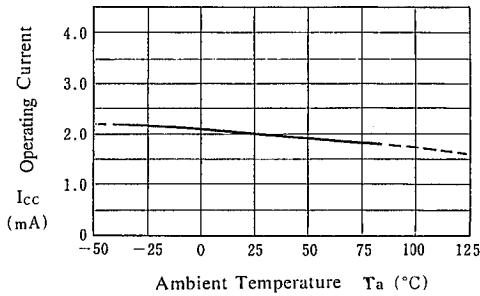
( $V^+/V^- = \pm 3.0V$ ,  $T_a = 25^\circ C$ )



■ TYPICAL CHARACTERISTICS

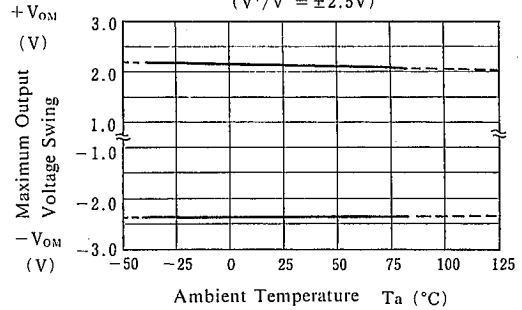
Operating Current vs. Temperature

( $V^+/V^- = 2.5V$ )



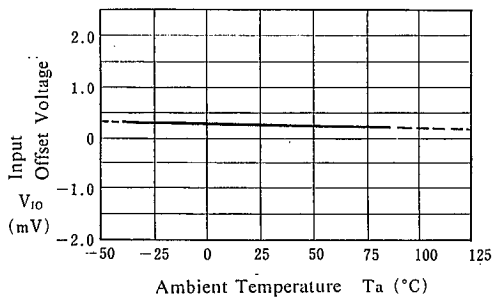
Maximum Output Voltage Swing vs. Temperature

( $V^+/V^- = \pm 2.5V$ )



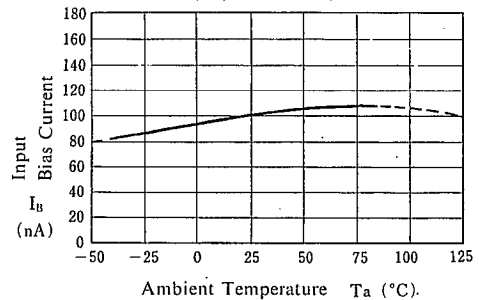
Input Offset Voltage vs. Temperature

( $V^+/V^- = \pm 2.5V$ )



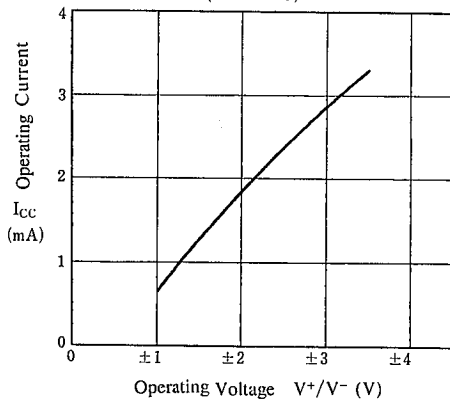
Input Bias Current vs. Temperature

( $V^+/V^- = \pm 2.5V$ )



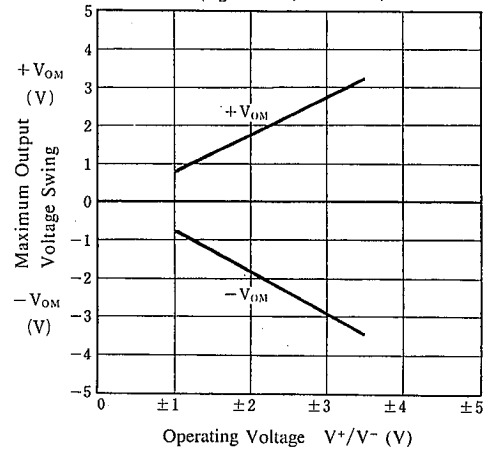
Operating Current vs. Operating Voltage

( $T_a = 25^\circ C$ )

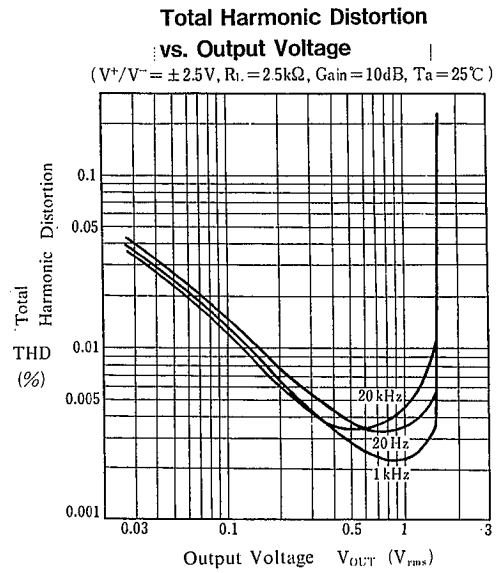
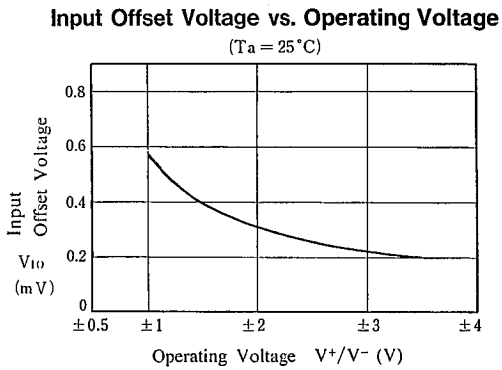


Maximum Output Voltage Swing vs. Operating Voltage

( $R_L = 2.5 k\Omega, T_a = 25^\circ C$ )



## ■ TYPICAL CHARACTERISTICS



4

## MEMO

[CAUTION]

The specifications on this databook are only given for information, without any guarantee as regards either mistakes or omissions. The application circuits in this databook are described only to show representative usages of the product and not intended for the guarantee or permission of any right including the industrial rights.