

3·1/2 DIGIT SINGLE CHIP A/D CONVERTER  
WITH DISPLAY HOLD

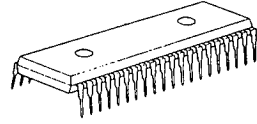
■ GENERAL DESCRIPTION

The NJU9203B/9204B are low-power-consumption, high-performance 3·1/2 digit single chip A/D converters with display hold containing a voltage reference, oscillator, 3·1/2 digits A/D converter, 7-segment decoder, display driver and control circuits.

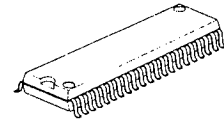
The NJU9203B is designed for direct LCD driving and the NJU9204B for LED direct driving.

The NJU9203B/9204B can be operated on simple application circuits as they require only few external components, therefore they are most suited for digital multimeter, digital thermometer and other likes.

■ PACKAGE OUTLINE



NJU9203BD/9204BD

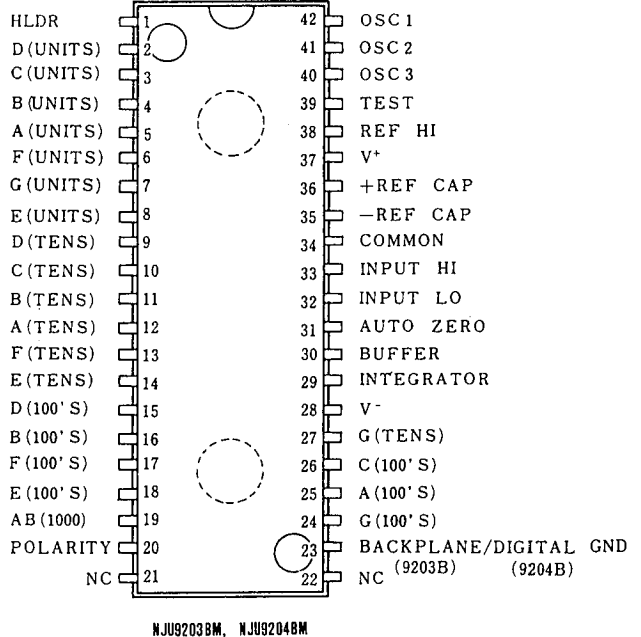
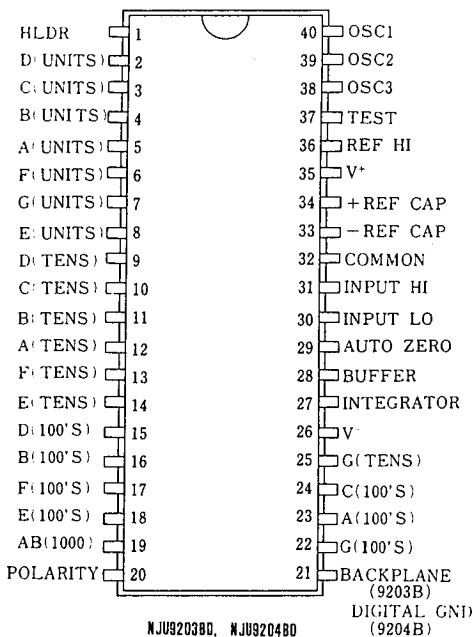


NJU9203BM/9204BM

■ FEATURES

- Display Hold Function
- Guaranteed 0 reading for 0 input on all scales
- Polarity detection at 0 point  
using a high-accuracy null-detection
- Low Input Current -- 1pA typ.
- True differential input
- Display device direct driving  
NJU9203B -- LCD  
NJU9204B -- LED
- Reference and Oscillation Circuits incorporated
- Low power consumption
- No external active components required
- Package Outline -- DIP 40 /DMP 42
- C-MOS Technology

■ PIN CONFIGURATION



**■ ABSOLUTE MAXIMUM RATINGS**

(Ta=25°C)

PARAMETER	DEVICE	SYMBOL	RATINGS	UNIT
Supply Voltage	9203B Only	$V^+ - V^-$	15	V
	9204B Only	$V^+$	+6	
	9204B Only	$V^-$	-9	
Analog Input Voltage	9203B/9204B	$V_{IN}$	$V^+ \sim V^-$	V
Reference Input Voltage	9203B/9204B	Vref	$V^+ \sim V^-$	V
Clock Input	9203B Only	$V_{CLK}$	Test $\sim V^+$	V
	9204B Only		GND $\sim V^+$	
Power Dissipation	9203B/9204B	$P_D$	300 / 800	mW
Operating Temperature Range	9203B/9204B	$T_{OPF}$	0 $\sim$ + 75	°C
Storage Temperature Range	9203B/9204B	$T_{STG}$	-40 $\sim$ +125	°C

 Note 1) The input current is limit by  $\pm 100\mu A$  when the input voltage is over supply voltage.

**■ ELECTRICAL CHARACTERISTICS**

 (Ta=25°C,  $f_{clock}=48kHz$ )

PARAMETER	SYMBOL	CONDITIONS	MIN	TYP	MAX	UNIT
Zero Input Reading	No	$V_{IN}=0.0V, FS=200.0mV$	-000.0	$\pm 000.0$	+000.0	Counts
Ratiometric Reading	N1000	$V_{IN}=V_{ref}, V_{ref}=100mV$	999	999/1000	1000	
Rollover Error	Err	$-V_{IN}=+V_{IN}-200.0mV$	-2	$\pm 0.5$	+2	Counts
Linearity	Lin	Full Scale=200mV	-2	$\pm 0.5$	+2	Counts
Common Mode Rejection Ratio	$C_{MRR}$	$V_{cm}=\pm 1V, V_{IN}=0V,$ Full Scale=200.0mV		50		$\mu V/V$
Noise(P-P Value)	$V_{NI}$	$V_{IN}=0V, FS=200.0mV$		30		$\mu V$
Leakage Current	$I_L$	$V_{IN}=0V$		1	10	pA
Zero Reading Drift	$Z_D$	$V_{IN}=0V, 0 < Ta < 75^\circ C$		0.2	1	$\mu V/^\circ C$
Scale Factor Temp. Coeff.	Ftemp	$V_{IN}=199.0mV, 0 < Ta < 75^\circ C$		1	5	ppm/°C
Operating Current	$I_{DD}$	$V_{IN}=0V, No Load$		0.8	1.8	mA
Analog Common Voltage		25k $\Omega$ Between Common and Positive Supply	2.4	3.0	3.2	V
Temp. Coeff.of Analog Common			80			ppm/°C
Seg. Drive Voltage (9203B)		$V_{DD}=9V$	4	5	6	V
BackPlane Drive Volt.(9203B)		$V_{DD}=9V$	4	5	6	
Seg. Sinking Current (9204B)		$V_{DD}=5V,$	Except Term.19 Term.19 only	5.0 8.0		mA
Seg. Sinking Current (9204B)		Seg.V=3V				

Note 2) Differential read out value of positive and negative voltage input.

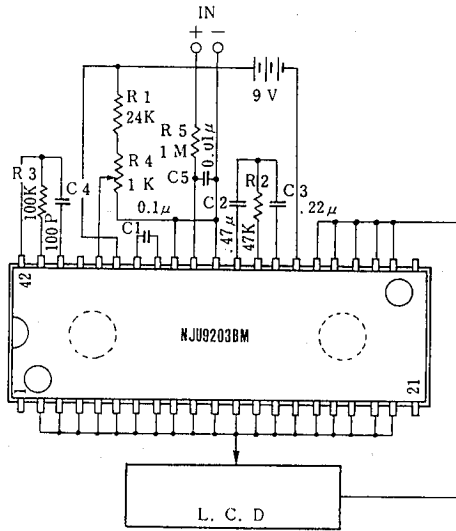
3) Error from the input-output linear characteristics getting from positive and negative full-scale input read out.

4) The peak value of noise must be not over 95% period in the measurement time.

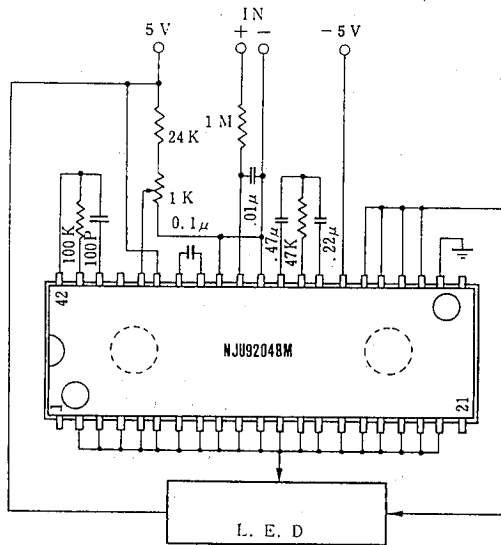
■ APPLICATION CIRCUITS

**5**

NJU9203B



NJU9204B



## MEMO

**[CAUTION]**

The specifications on this databook are only given for information, without any guarantee as regards either mistakes or omissions. The application circuits in this databook are described only to show representative usages of the product and not intended for the guarantee or permission of any right including the industrial rights.