



The Infinite Bandwidth Company™

# MIC911

## 105MHz Low-Power SOT-23-5 Op Amp

### Final Information

### General Description

The MIC911 is a high-speed operational amplifier which is unity gain stable regardless of resistive and capacitive load. It provides a gain-bandwidth product of 105MHz, a very low 1.25mA supply current, and features the ltttybitty™ SOT-23-5 package.

Supply voltage range is from ±2.5V to ±9V, allowing the MIC911 to be used in low-voltage circuits or applications requiring large dynamic range.

The MIC911 is stable driving any capacitive load and achieves excellent PSRR and CMRR, making it much easier to use than most conventional high-speed devices. Low supply voltage, low power consumption, and small packing make the MIC911 ideal for portable equipment. The ability to drive capacitive loads also makes it possible to drive long coaxial cables.

### Features

- 105MHz gain bandwidth product
- 1.25mA supply current
- Unconditionally unity gain stable
- Drives any capacitive load
- SOT-23-5 package
- 120V/μs slew rate
- 112dB CMRR

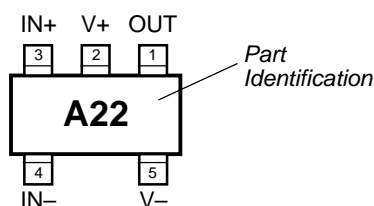
### Applications

- Video
- Imaging
- Ultrasound
- Portable equipment
- Line drivers
- XDSL

### Ordering Information

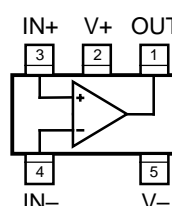
| Part Number | Junction Temp. Range | Package  |
|-------------|----------------------|----------|
| MIC911BM5   | -40°C to +85°C       | SOT-23-5 |

### Pin Configuration



SOT-23-5

### Functional Pinout



SOT-23-5

### Pin Description

| Pin Number | Pin Name | Pin Function             |
|------------|----------|--------------------------|
| 1          | OUT      | Output: Amplifier Output |
| 2          | V+       | Positive Supply (Input)  |
| 3          | IN+      | Noninverting Input       |
| 4          | IN-      | Inverting Input          |
| 5          | V-       | Negative Supply (Input)  |

**Absolute Maximum Ratings (Note 1)**

|  |                      |
|--|----------------------|
| Supply Voltage ( $V_{V+} - V_{V-}$ )                 | 20V                  |
| Differential Input Voltage ( $ V_{IN+} - V_{IN-} $ ) | 4V, <b>Note 3</b>    |
| Input Common-Mode Range ( $V_{IN+}, V_{IN-}$ )       | $V_{V+}$ to $V_{V-}$ |
| Lead Temperature (soldering, 5 sec.)                 | 260°C                |
| Storage Temperature ( $T_S$ )                        | 150°C                |
| ESD Rating, <b>Note 4</b>                            | 1.5kV                |

**Operating Ratings (Note 2)**

|                                |                                |
|--------------------------------|--------------------------------|
| Supply Voltage ( $V_S$ )       | $\pm 2.5V$ to $\pm 9V$         |
| Junction Temperature ( $T_J$ ) | $-40^\circ C$ to $+85^\circ C$ |
| Package Thermal Resistance     | 260°C/W                        |

**Electrical Characteristics ( $\pm 5V$ )**

$V_{V+} = +5V$ ,  $V_{V-} = -5V$ ,  $V_{CM} = 0V$ ,  $V_{OUT} = 0V$ ;  $R_L = 10M\Omega$ ;  $T_J = 25^\circ C$ , **bold** values indicate  $-40^\circ C \leq T_J \leq +85^\circ C$ ; unless noted.

| Symbol    | Parameter                                    | Condition  | Min                 | Typ  | Max                 | Units              |
|-----------|--|--|---------------------|------|---------------------|--------------------|
| $V_{OS}$  | Input Offset Voltage                         |  |                     | 1    | <b>10</b>           | mV                 |
| $V_{OS}$  | Input Offset Voltage Temperature Coefficient |  |                     | 4    |                     | $\mu V/^\circ C$   |
| $I_B$     | Input Bias Current                           |  |                     | 1.5  | 4<br><b>8</b>       | $\mu A$<br>$\mu A$ |
| $I_{OS}$  | Input Offset Current                         |  |                     | 0.03 | 2<br><b>3</b>       | $\mu A$<br>$\mu A$ |
| $V_{CM}$  | Input Common-Mode Range                      | CMRR > 60dB  | <b>-3.5</b>         |      | <b>+3.5</b>         | V                  |
| CMRR      | Common-Mode Rejection Ratio                  | $-3V < V_{CM} < +3V$   | <b>80</b>           | 110  |                     | dB                 |
| PSRR      | Power Supply Rejection Ratio                 | $\pm 5V < V_S < \pm 9V$  | <b>75</b>           | 88   |                     | dB                 |
| $A_{VOL}$ | Large-Signal Voltage Gain                    | $R_L = 2k, V_{OUT} = \pm 2V$   | <b>65</b>           | 78   |                     | dB                 |
|           |  | $R_L = 200\Omega, V_{OUT} = \pm 1V$  | <b>65</b>           | 78   |                     | dB                 |
| $V_{OUT}$ | Maximum Output Voltage Swing                 | positive, $R_L = 2k\Omega$   | +3.3<br><b>+3.0</b> | 3.5  |                     | V<br>V             |
|           |  | negative, $R_L = 2k\Omega$   |                     | -3.5 | -3.3<br><b>-3.0</b> | V<br>V             |
|           |  | positive, $R_L = 200\Omega$  | +2.8<br><b>+2.5</b> | 3.2  |                     | V<br>V             |
|           |  | negative, $R_L = 200\Omega$ , <b>Note 5</b>  |                     | -2.5 | -1.7<br><b>-1.0</b> | V<br>V             |
|           |  | negative, $R_L = 200\Omega$ , $25^\circ C \leq T_J \leq +85^\circ C$ , <b>Note 5</b> |                     |      | <b>-1.7</b>         | V                  |
| GBW       | Unity Gain-Bandwidth Product                 | $R_L = 1k\Omega$   |                     | 95   |                     | MHz                |
| BW        | -3dB Bandwidth                               | $A_V = 2, R_L = 470\Omega$   |                     | 70   |                     | MHz                |
| SR        | Slew Rate                                    |  |                     | 100  |                     | V/ $\mu s$         |
| $I_{GND}$ | Short-Circuit Output Current                 | source   |                     | 65   |                     | mA                 |
|           |  | sink   |                     | 17   |                     | mA                 |
| $I_{GND}$ | Supply Current                               |  |                     | 1.25 | 1.8<br><b>2.3</b>   | mA<br>mA           |

**Electrical Characteristics**

$V_{V+} = +9V$ ,  $V_{V-} = -9V$ ,  $V_{CM} = 0V$ ,  $V_{OUT} = 0V$ ;  $R_L = 10M\Omega$ ;  $T_J = 25^\circ C$ , **bold** values indicate  $-40^\circ C \leq T_J \leq +85^\circ C$ ; unless noted.

| Symbol   | Parameter                                    | Condition | Min | Typ | Max           | Units              |
|----------|--|-----------|-----|-----|---------------|--------------------|
| $V_{OS}$ | Input Offset Voltage                         |           |     | 1   | <b>10</b>     | mV                 |
| $V_{OS}$ | Input Offset Voltage Temperature Coefficient |           |     | 4   |               | $\mu V/^\circ C$   |
| $I_B$    | Input Bias Current                           |           |     | 1.5 | 4<br><b>8</b> | $\mu A$<br>$\mu A$ |

| Symbol    | Parameter                    | Condition                             | Min          | Typ  | Max          | Units              |
|-----------|------------------------------|---------------------------------------|--------------|------|--------------|--------------------|
| $I_{OS}$  | Input Offset Current         |                                       |              | 0.03 | 2<br>3       | $\mu A$<br>$\mu A$ |
| $V_{CM}$  | Input Common-Mode Range      | CMRR > 60dB                           | -7.5         |      | +7.5         | V                  |
| CMRR      | Common-Mode Rejection Ratio  | $-7V < V_{CM} < 7V$                   | 80           | 112  |              | dB                 |
| $A_{VOL}$ | Large-Signal Voltage Gain    | $R_L = 2k\Omega$ , $V_{OUT} = \pm 6V$ | 65           | 80   |              | dB                 |
| $V_{OUT}$ | Maximum Output Voltage Swing | positive, $R_L = 2k\Omega$            | +7.2<br>+6.8 | +7.4 |              | V<br>V             |
|           |                              | negative, $R_L = 2k\Omega$            |              | -7.4 | -7.2<br>-6.8 | V<br>V             |
| GBW       | Unity Gain-Bandwidth Product | $R_L = 1k\Omega$                      |              | 105  |              | MHz                |
| BW        | -3dB Bandwidth               | $A_V = 2$ , $R_L = 470\Omega$         |              | 80   |              | MHz                |
| SR        | Slew Rate                    |                                       |              | 120  |              | V/ $\mu s$         |
| $I_{GND}$ | Short-Circuit Output Current | source                                |              | 80   |              | mA                 |
|           |                              | sink                                  |              | 22   |              | mA                 |
| $I_{GND}$ | Supply Current               |                                       |              | 1.35 | 1.9<br>2.4   | mA<br>mA           |

**Note 1.** Exceeding the absolute maximum rating may damage the device.

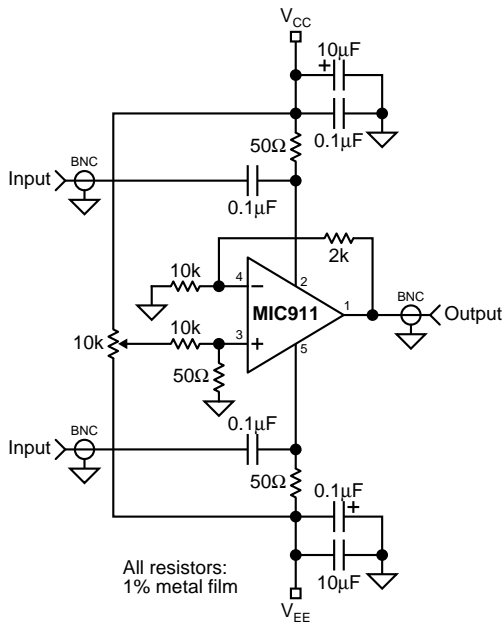
**Note 2.** The device is not guaranteed to function outside its operating rating.

**Note 3.** Exceeding the maximum differential input voltage will damage the input stage and degrade performance (in particular, input bias current is likely to change).

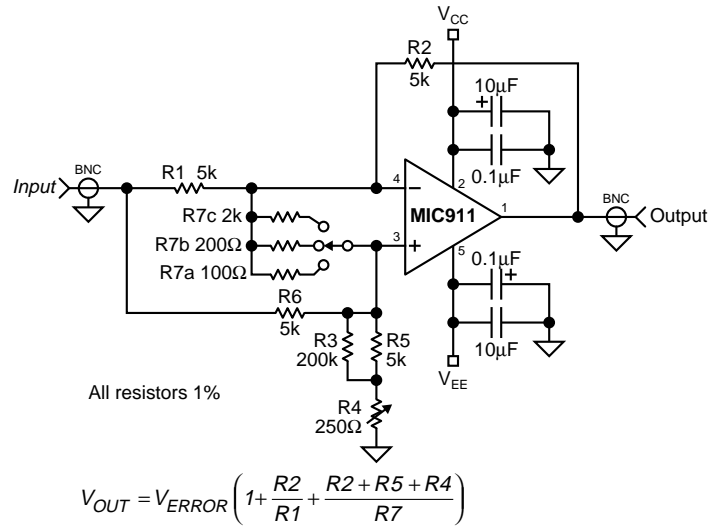
**Note 4.** Devices are ESD sensitive. Handling precautions recommended. Human body model, 1.5k in series with 100pF.

**Note 5.** Output swing limited by the maximum output sink capability, refer to the short-circuit current vs. temperature graph in "Typical Characteristics."

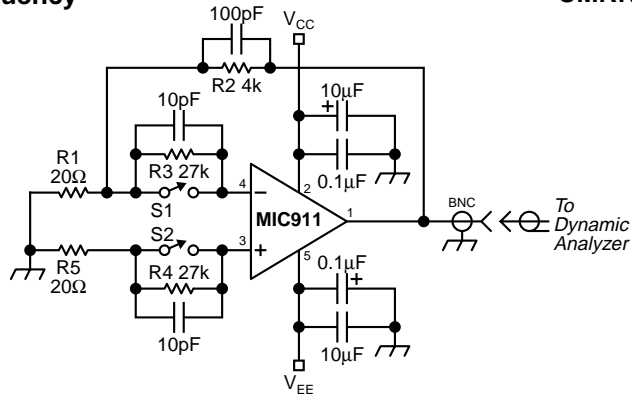
Test Circuits



PSRR vs. Frequency

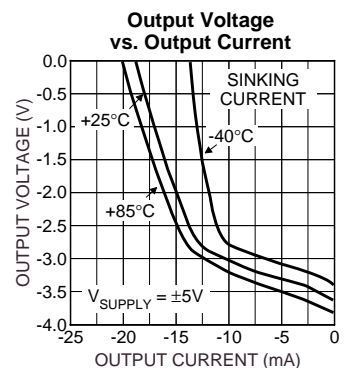
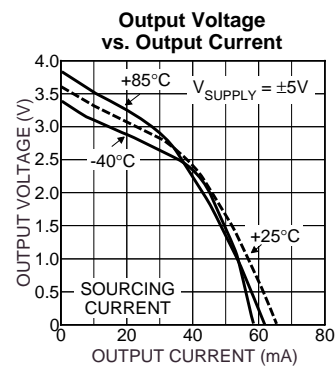
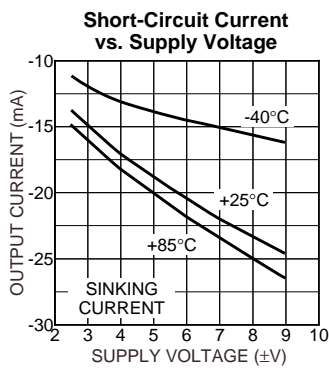
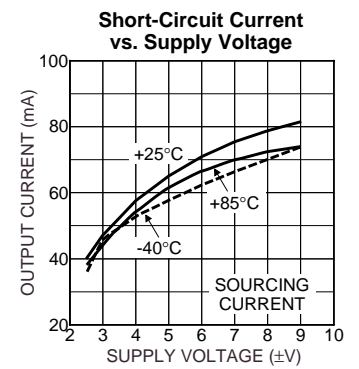
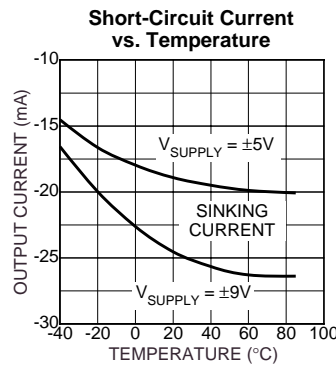
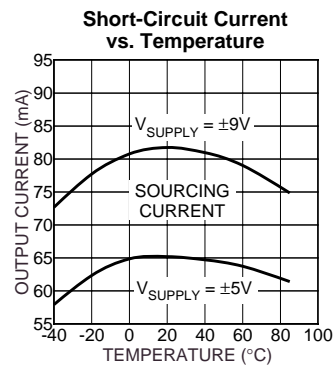
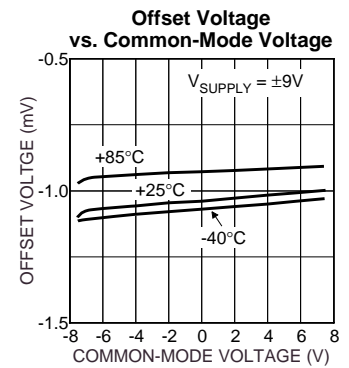
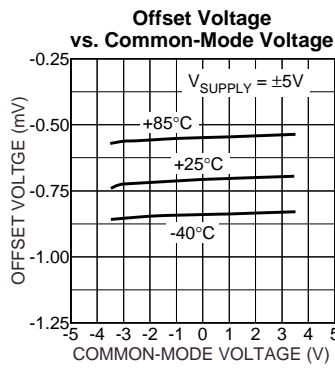
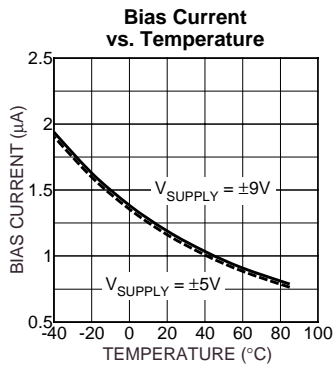
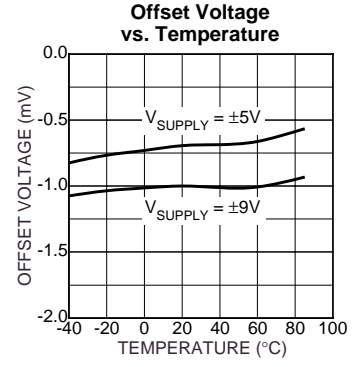
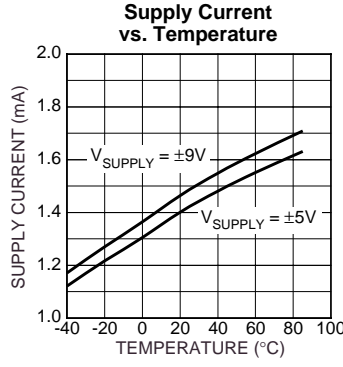
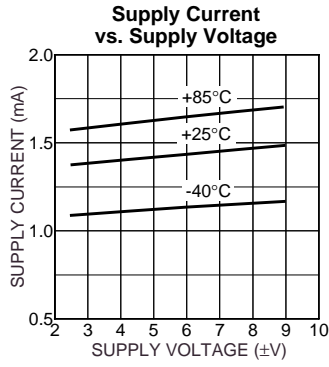


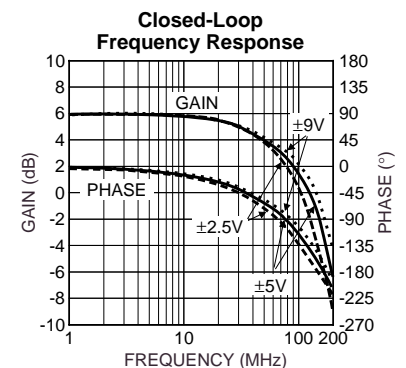
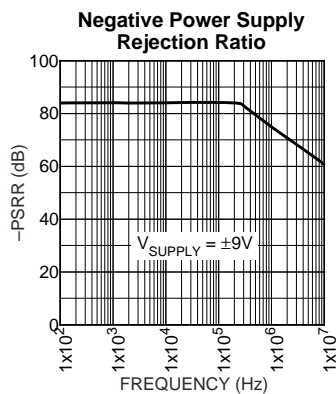
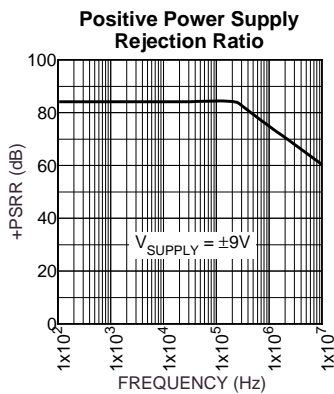
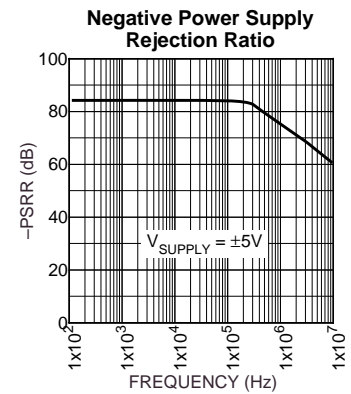
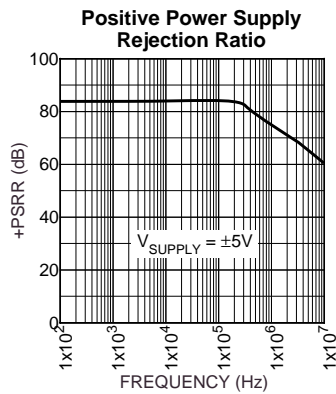
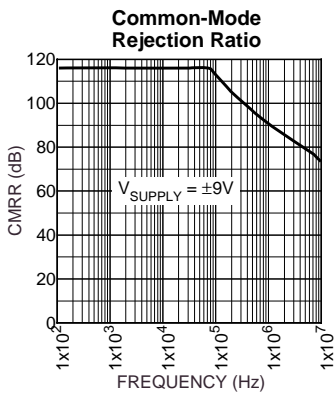
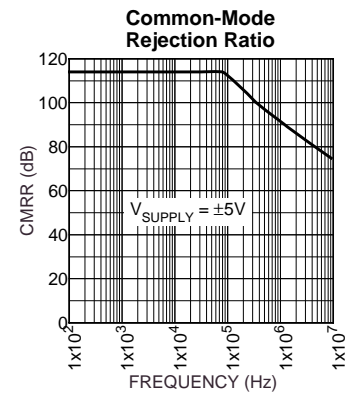
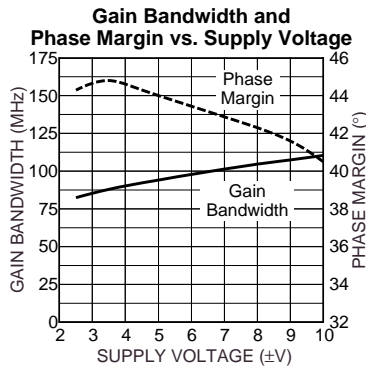
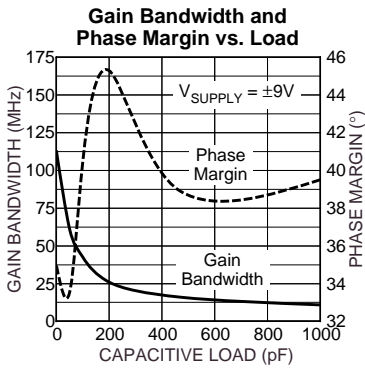
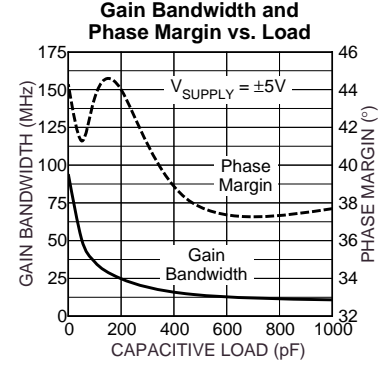
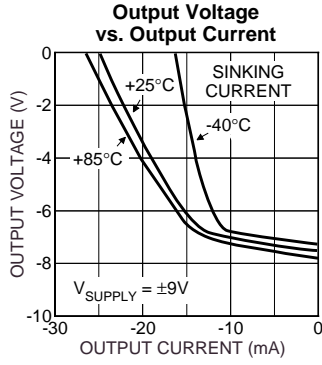
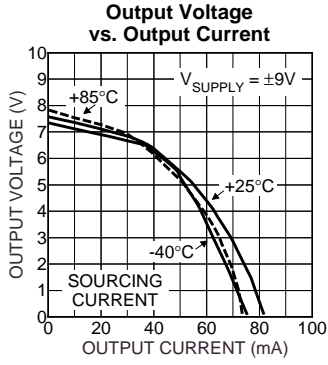
CMRR vs. Frequency

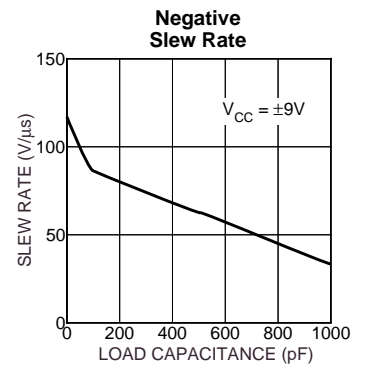
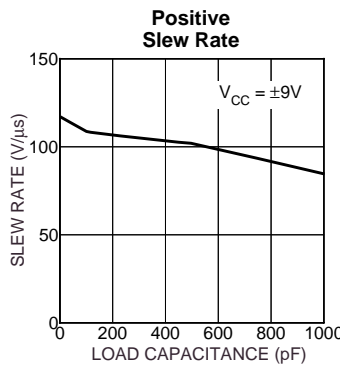
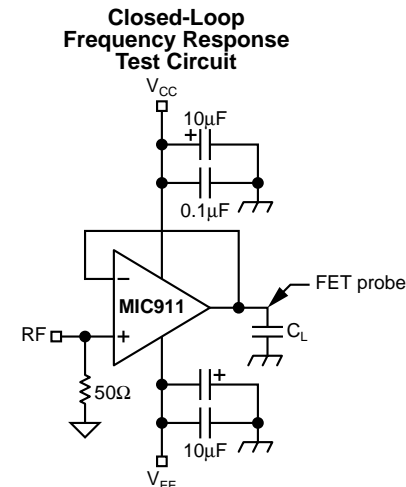
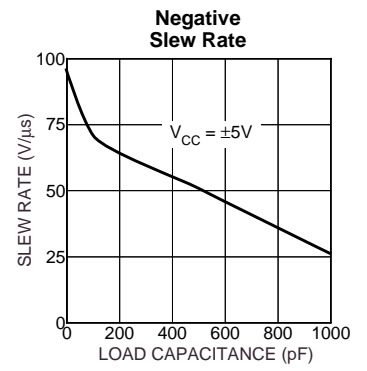
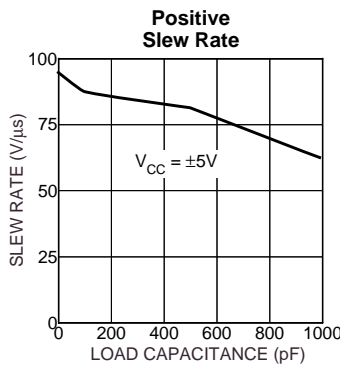
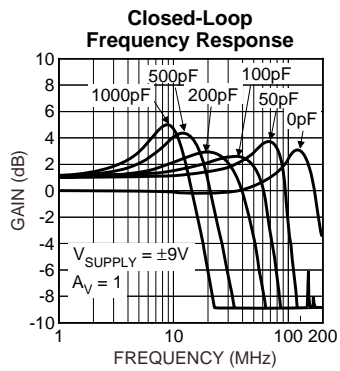
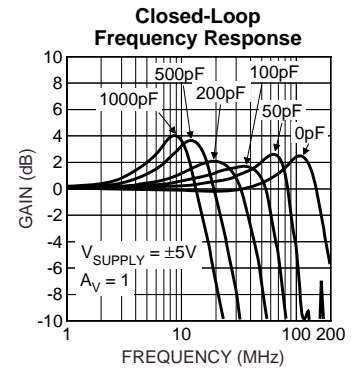
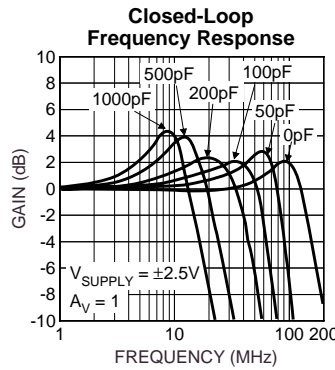
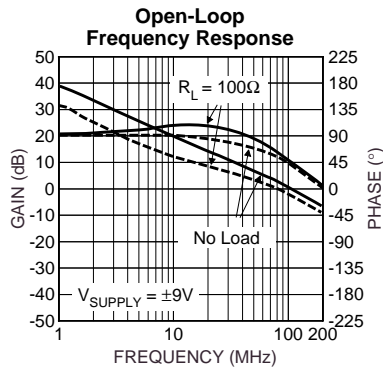
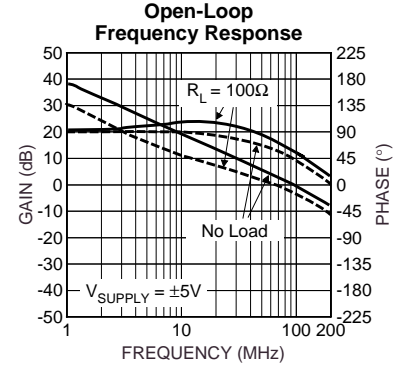
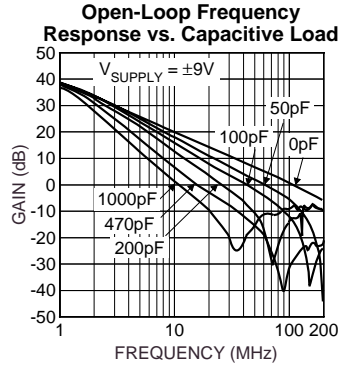
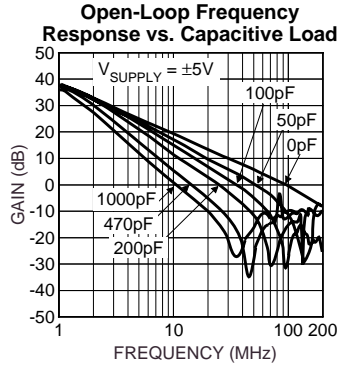


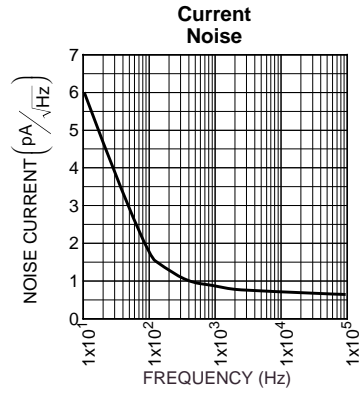
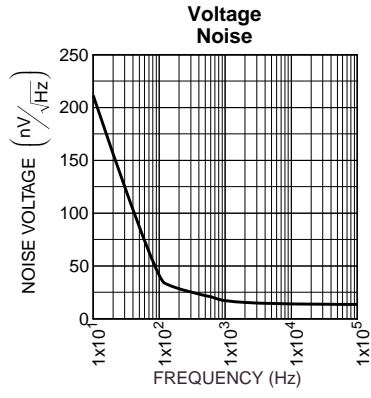
Noise Measurement

# Electrical Characteristics



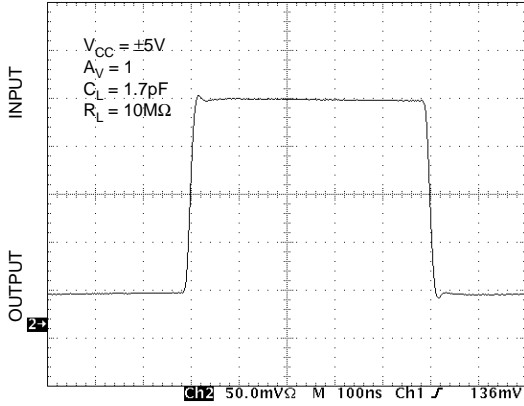




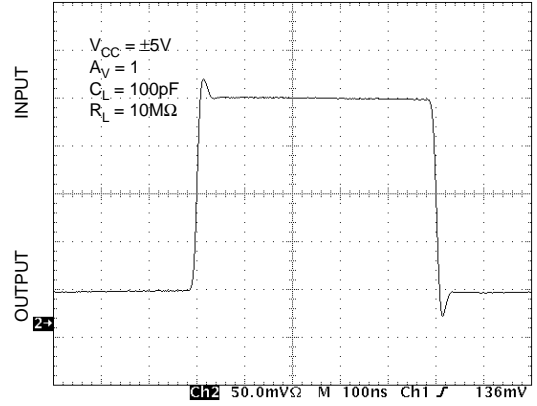




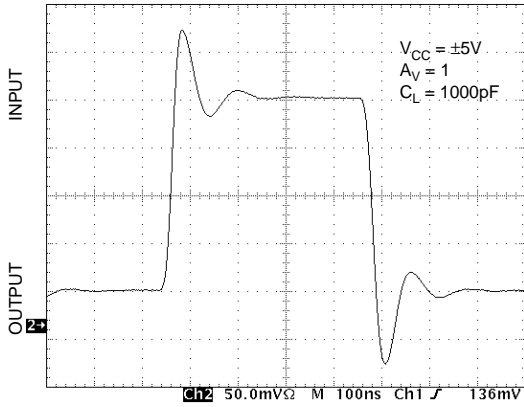
**Small-Signal  
Pulse Response**



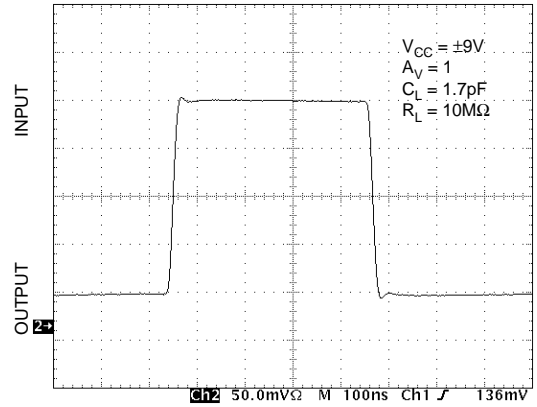
**Small-Signal  
Pulse Response**



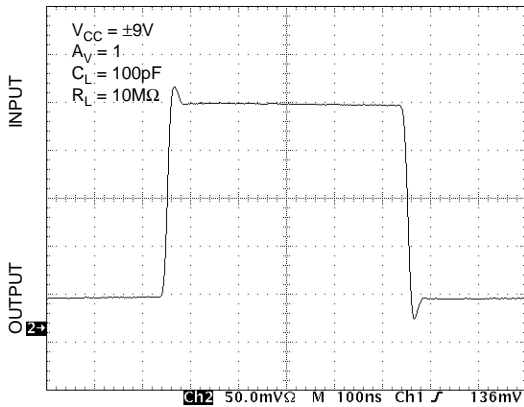
**Small-Signal  
Pulse Response**



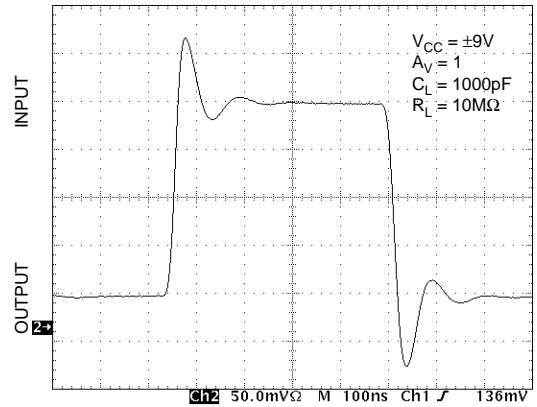
**Small-Signal  
Pulse Response**



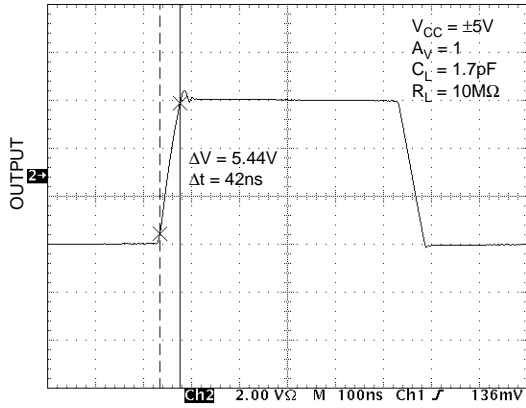
**Small-Signal  
Pulse Response**



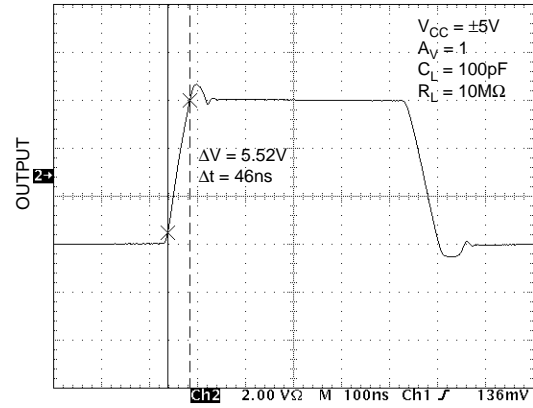
**Small-Signal  
Pulse Response**



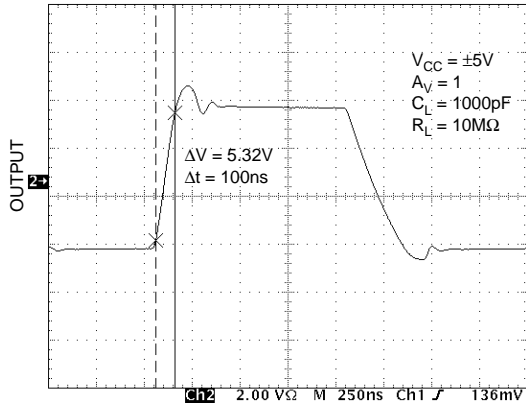
Large-Signal  
Pulse Response



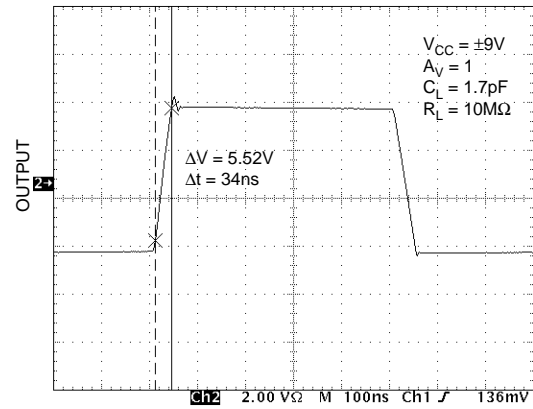
Large-Signal  
Pulse Response



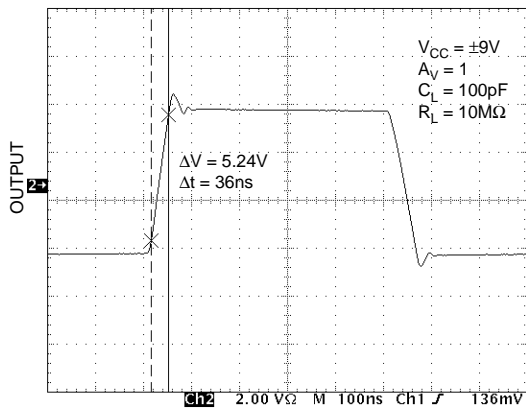
Large-Signal  
Pulse Response



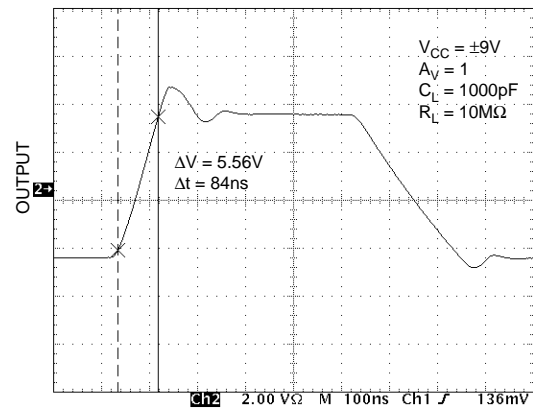
Large-Signal  
Pulse Response



Large-Signal  
Pulse Response



Large-Signal  
Pulse Response



## Applications Information

The MIC911 is a high-speed, voltage-feedback operational amplifier featuring very low supply current and excellent stability. This device is unity gain stable and capable of driving high capacitance loads.

### Driving High Capacitance

The MIC911 is stable when driving any capacitance (see "Typical Characteristics: Gain Bandwidth and Phase Margin vs. Load Capacitance") making it ideal for driving long coaxial cables or other high-capacitance loads.

Phase margin remains constant as load capacitance is increased. Most high-speed op amps are only able to drive limited capacitance.

Note: increasing load capacitance does reduce the speed of the device (see "Typical Characteristics: Gain Bandwidth and Phase Margin vs. Load"). In applications where the load capacitance reduces the speed of the op amp to an unacceptable level, the effect of the load capacitance can be reduced by adding a small resistor (<100Ω) in series with the output.

### Feedback Resistor Selection

Conventional op amp gain configurations and resistor selection apply, the MIC911 is NOT a current feedback device. Resistor values in the range of 1k to 10k are recommended.

### Layout Considerations

All high speed devices require careful PCB layout. The high stability and high PSRR of the MIC911 make this op amp easier to use than most, but the following guidelines should be observed: Capacitance, particularly on the two inputs pins will degrade performance; avoid large copper traces to the inputs. Keep the output signal away from the inputs and use a ground plane.

It is important to ensure adequate supply bypassing capacitors are located close to the device.

## Power Supply Bypassing

Regular supply bypassing techniques are recommended. A 10μF capacitor in parallel with a 0.1μF capacitor on both the positive and negative supplies are ideal. For best performance all bypassing capacitors should be located as close to the op amp as possible and all capacitors should be low ESL (equivalent series inductance), ESR (equivalent series resistance). Surface-mount ceramic capacitors are ideal.

## Thermal Considerations

The SOT-23-5 package, like all small packages, has a high thermal resistance. It is important to ensure the IC does not exceed the maximum operating junction (die) temperature of 85°C. The part can be operated up to the absolute maximum temperature rating of 125°C, but between 85°C and 125°C performance will degrade, in particular CMRR will reduce.

A MIC911 with no load, dissipates power equal to the quiescent supply current \* supply voltage

$$P_{D(no\ load)} = (V_{V+} - V_{V-}) I_S$$

When a load is added, the additional power is dissipated in the output stage of the op amp. The power dissipated in the device is a function of supply voltage, output voltage and output current.

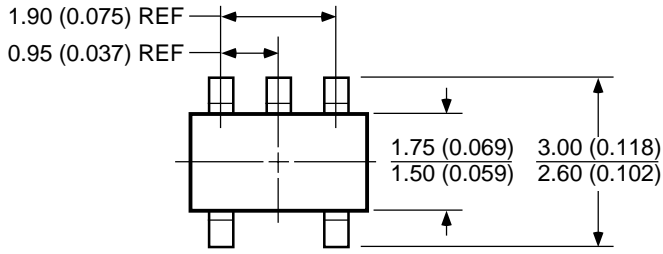
$$P_{D(output\ stage)} = (V_{V+} - V_{OUT}) I_{OUT}$$

$$Total\ Power\ Dissipation = P_{D(no\ load)} + P_{D(output\ stage)}$$

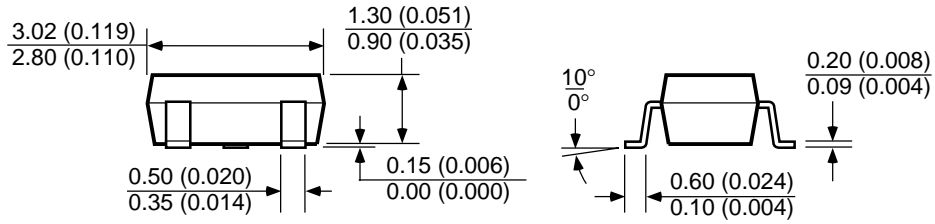
Ensure the total power dissipated in the device is no greater than the thermal capacity of the package. The SOT23-5 package has a thermal resistance of 260°C/W.

$$Max.\ Allowable\ Power\ Dissipation = \frac{T_{J(max)} - T_{A(max)}}{260W}$$

**Package Information**



DIMENSIONS:  
MM (INCH)



**SOT-23-5 (M5)**

**MICREL INC. 1849 FORTUNE DRIVE SAN JOSE, CA 95131 USA**

TEL + 1 (408) 944-0800 FAX + 1 (408) 944-0970 WEB <http://www.micrel.com>

This information is believed to be accurate and reliable, however no responsibility is assumed by Micrel for its use nor for any infringement of patents or other rights of third parties resulting from its use. No license is granted by implication or otherwise under any patent or patent right of Micrel Inc.

© 2000 Micrel Incorporated