

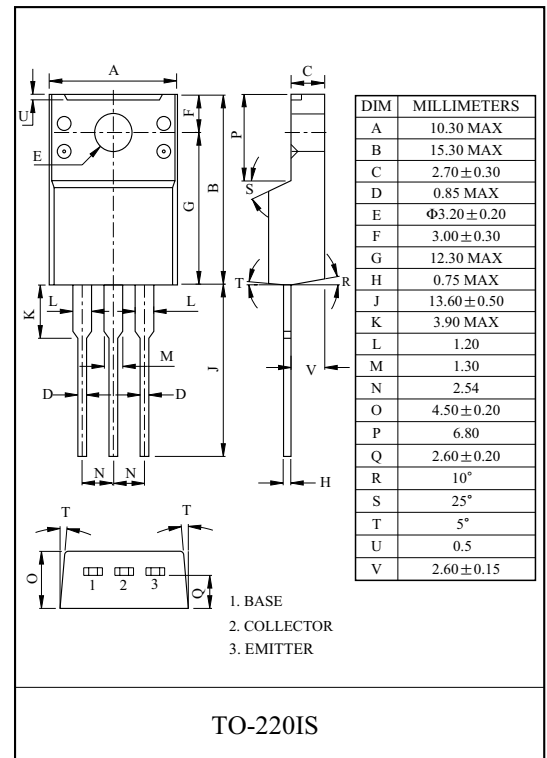
MONOLITHIC CONSTRUCTION WITH BUILT IN
BASE-EMITTER SHUNT RESISTORS INDUSTRIAL USE.

FEATURES

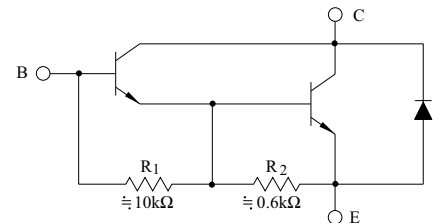
- High DC Current Gain.
: $h_{FE}=1000(\text{Min.})$, @ $V_{CE}=4V$, $I_C=1A$.
- Low Collector-Emitter Saturation Voltage.
- Complementary to TIP117F.

MAXIMUM RATING ($T_a=25^\circ\text{C}$)

CHARACTERISTIC	SYMBOL	RATING	UNIT
Collector-Base Voltage	V_{CBO}	100	V
Collector-Emitter Voltage	V_{CEO}	100	V
Emitter-Base Voltage	V_{EBO}	5	V
Collector Current	DC	I_C	A
	Pulse	I_{CP}	
Base Current	DC	I_B	50 mA
Collector Power Dissipation	$T_a=25^\circ\text{C}$	P_C	W
	$T_c=25^\circ\text{C}$		
Junction Temperature	T_j	150	$^\circ\text{C}$
Storage Temperature Range	T_{stg}	-65 ~ 150	$^\circ\text{C}$



EQUIVALENT CIRCUIT



ELECTRICAL CHARACTERISTICS ($T_a=25^\circ\text{C}$)

CHARACTERISTIC	SYMBOL	TEST CONDITION	MIN.	TYP.	MAX.	UNIT
Collector Cut-off Current	I_{CEO}	$V_{CE}=50V$, $I_B=0$	-	-	2	mA
	I_{CBO}	$V_{CB}=100V$, $I_E=0$	-	-	1	
Emitter Cut-off Current	I_{EBO}	$V_{EB}=5V$, $I_C=0$	-	-	2	mA
DC Current Gain	h_{FE}	$V_{CE}=4V$, $I_C=1A$	1000	-	-	
		$V_{CE}=4V$, $I_C=2A$	500	-	-	
Collector-Emitter Sustaining Voltage	$V_{CEO(SUS)}$	$I_C=30mA$, $I_B=0$	100	-	-	V
Collector-Emitter Saturation Voltage	$V_{CE(sat)}$	$I_C=2A$, $I_B=8mA$	-	-	2.5	V
Base-Emitter On Voltage	$V_{BE(ON)}$	$V_{CE}=4V$, $I_C=2A$	-	-	2.8	V
Collector Output Capacitance	C_{ob}	$V_{CB}=10V$, $I_E=0$, $f=0.1MHz$	-	-	100	pF

TIP112F

