

TOSHIBA Transistor Silicon NPN Epitaxial Type (PCT process) (Bias Resistor built-in Transistor)

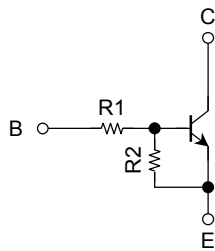
RN1101FT, RN1102FT, RN1103FT RN1104FT, RN1105FT, RN1106FT

Switching, Inverter Circuit, Interface Circuit and Driver Circuit Applications.

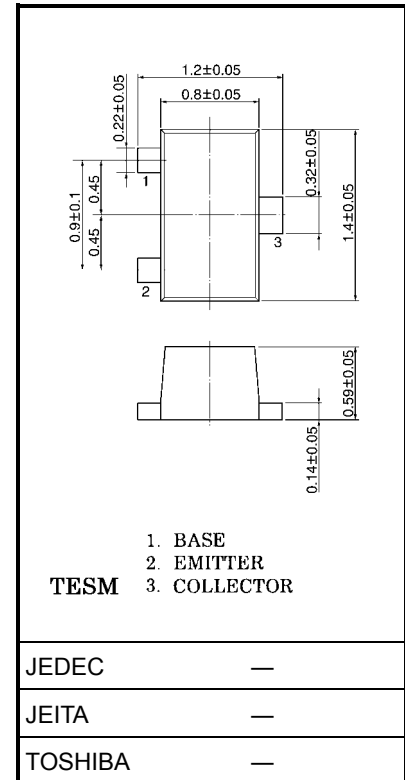
Unit: mm

- High-density mount is possible because of devices housed in very thin TESH packages.
- Incorporating a bias resistor into a transistor reduces parts count. Reducing the parts count enable the manufacture of ever more compact equipment and save assembly cost.
- Wide range of resistor values are available to use in various circuit designs.
- Complementary to RN2101FT~2106FT

Equivalent Circuit and Bias Resistor Values



Type No.	R1 (kΩ)	R2 (kΩ)
RN1101FT	4.7	4.7
RN1102FT	10	10
RN1103FT	22	22
RN1104FT	47	47
RN1105FT	2.2	47
RN1106FT	4.7	47



JEDEC

—

JEITA

—

TOSHIBA

—

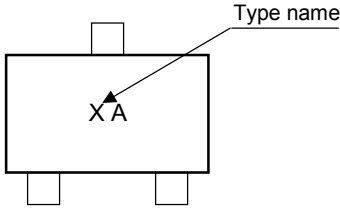
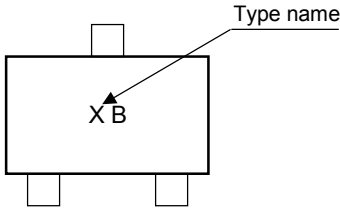
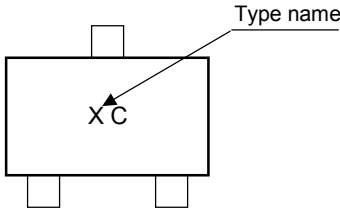
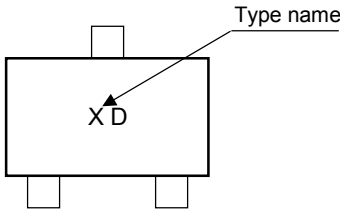
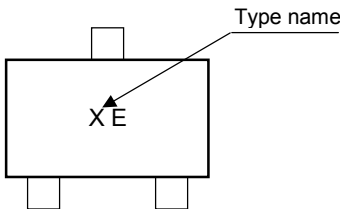
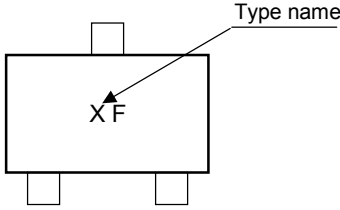
Maximum Ratings (Ta = 25°C)

Characteristics		Symbol	Rating	Unit
Collector-base voltage	RN1101FT~1106FT	V _{CBO}	50	V
Collector-emitter voltage		V _{CEO}	50	V
Emitter-base voltage	RN1101FT~1104FT	V _{EBO}	10	V
	RN1105FT, RN1106FT		5	
Collector current	RN1101FT~1106FT	I _C	100	mA
Collector power dissipation		P _C (Note)	100	mW
Junction temperature		T _j	150	°C
Storage temperature range		T _{stg}	-55~150	°C

Note: Total rating

Electrical Characteristics (Ta = 25°C)

Characteristics		Symbol	Test Condition	Min	Typ.	Max	Unit
Collector cut-off current	RN1101FT~1106FT	I_{CBO}	$V_{CB} = 50\text{ V}, I_E = 0$	—	—	100	nA
		I_{CEO}	$V_{CE} = 50\text{ V}, I_B = 0$	—	—	500	
Emitter cut-off current	RN1101FT	I_{EBO}	$V_{EB} = 10\text{ V}, I_C = 0$	0.82	—	1.52	mA
	RN1102FT			0.38	—	0.71	
	RN1103FT			0.17	—	0.33	
	RN1104FT			0.082	—	0.15	
	RN1105FT	$V_{EB} = 5\text{ V}, I_C = 0$	0.078	—	0.145		
	RN1106FT		0.074	—	0.138		
DC current gain	RN1101FT	h_{FE}	$V_{CE} = 5\text{ V}, I_C = 10\text{ mA}$	30	—	—	
	RN1102FT			50	—	—	
	RN1103FT			70	—	—	
	RN1104FT			80	—	—	
	RN1105FT			80	—	—	
	RN1106FT			80	—	—	
Collector-emitter saturation voltage	RN1101FT~1106FT	$V_{CE(sat)}$	$I_C = 5\text{ mA}, I_B = 0.25\text{ mA}$	—	0.1	0.3	V
Input voltage (ON)	RN1101FT	$V_{I(ON)}$	$V_{CE} = 0.2\text{ V}, I_C = 5\text{ mA}$	1.1	—	2.0	V
	RN1102FT			1.2	—	2.4	
	RN1103FT			1.3	—	3.0	
	RN1104FT			1.5	—	5.0	
	RN1105FT			0.6	—	1.1	
	RN1106FT			0.7	—	1.3	
Input voltage (OFF)	RN1101FT~1104FT	$V_{I(OFF)}$	$V_{CE} = 5\text{ V}, I_C = 0.1\text{ mA}$	1.0	—	1.5	V
	RN1105FT, 1106FT			0.5	—	0.8	
Transition frequency	RN1101FT~1106FT	f_T	$V_{CE} = 10\text{ V}, I_C = 5\text{ mA}$	—	250	—	MHz
Collector output capacitance	RN1101FT~1106FT	C_{ob}	$V_{CB} = 10\text{ V}, I_E = 0, f = 1\text{ MHz}$	—	3	6	pF
Input resistor	RN1101FT	R1	—	3.29	4.7	6.11	kΩ
	RN1102FT			7	10	13	
	RN1103FT			15.4	22	28.6	
	RN1104FT			32.9	47	61.1	
	RN1105FT			1.54	2.2	2.86	
	RN1106FT			3.29	4.7	6.11	
Resistor ratio	RN1101FT~1104FT	R1/R2	—	0.9	1.0	1.1	
	RN1105FT			0.0421	0.0468	0.0515	
	RN1106FT			0.09	0.1	0.11	

Type Name	Marking
RN1101FT	
RN1102FT	
RN1103FT	
RN1104FT	
RN1105FT	
RN1106FT	

RESTRICTIONS ON PRODUCT USE

000707EAA

- TOSHIBA is continually working to improve the quality and reliability of its products. Nevertheless, semiconductor devices in general can malfunction or fail due to their inherent electrical sensitivity and vulnerability to physical stress. It is the responsibility of the buyer, when utilizing TOSHIBA products, to comply with the standards of safety in making a safe design for the entire system, and to avoid situations in which a malfunction or failure of such TOSHIBA products could cause loss of human life, bodily injury or damage to property.
In developing your designs, please ensure that TOSHIBA products are used within specified operating ranges as set forth in the most recent TOSHIBA products specifications. Also, please keep in mind the precautions and conditions set forth in the "Handling Guide for Semiconductor Devices," or "TOSHIBA Semiconductor Reliability Handbook" etc..
- The TOSHIBA products listed in this document are intended for usage in general electronics applications (computer, personal equipment, office equipment, measuring equipment, industrial robotics, domestic appliances, etc.). These TOSHIBA products are neither intended nor warranted for usage in equipment that requires extraordinarily high quality and/or reliability or a malfunction or failure of which may cause loss of human life or bodily injury ("Unintended Usage"). Unintended Usage include atomic energy control instruments, airplane or spaceship instruments, transportation instruments, traffic signal instruments, combustion control instruments, medical instruments, all types of safety devices, etc.. Unintended Usage of TOSHIBA products listed in this document shall be made at the customer's own risk.
- The information contained herein is presented only as a guide for the applications of our products. No responsibility is assumed by TOSHIBA CORPORATION for any infringements of intellectual property or other rights of the third parties which may result from its use. No license is granted by implication or otherwise under any intellectual property or other rights of TOSHIBA CORPORATION or others.
- The information contained herein is subject to change without notice.