

Pioneer

Service Manual

ORDER NO.
TRT1124

AMPLIFIED BANDPASS SUBWOOFER

TS-WX205A

EW

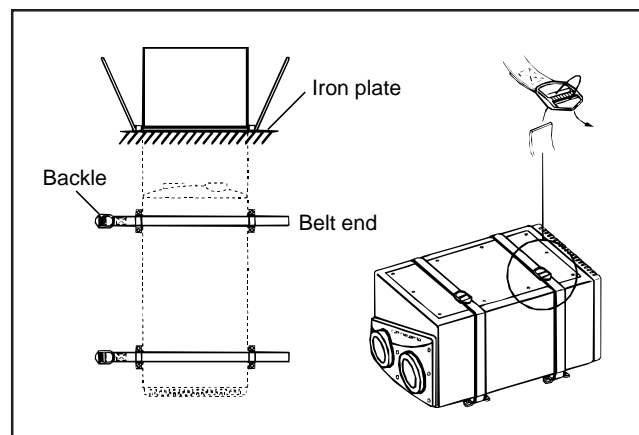
1. SPECIFICATIONS

- Speaker specifications
 - Size ϕ 200mm (8" Dia.)
 - High compliance, rolled edge
 - Heat-resistant voice coil
 - Strontium magnet : 500g (18oz)
- Amplifier
 - Max. Power output 100W (65Hz, 22% THD)
 - DIN output power (DIN45324, 65Hz, $1.8\Omega + B = 14.4V$) 70W
 - INPUT LEVEL (at Gain Max)
 - (RCA) 100mV+100mV/20k Ω
 - (Speaker line) 2V+2V/5k Ω
 - Power source DC14.4V (10.8~15.6V allowable)
 - Max. current consumption 9A
 - Grounding Negative ground
- Speaker system Bandpass type
- Cabinet material Particle board
- Sensitivity 107dB/W (In car, SUV type)
- Size
 - 474mm(18-5/8") (W) \times 280mm(11") (D) \times 248mm(9-3/4") (H)
- Weight (including accessory parts) 10.1kg (22lb 4oz)
- Gross weight (including packaging) 11.5kg (25lb 6oz)

Note:

Specifications and the design are subject to possible modification without notice due to improvements.

2. HOW TO INSTALL

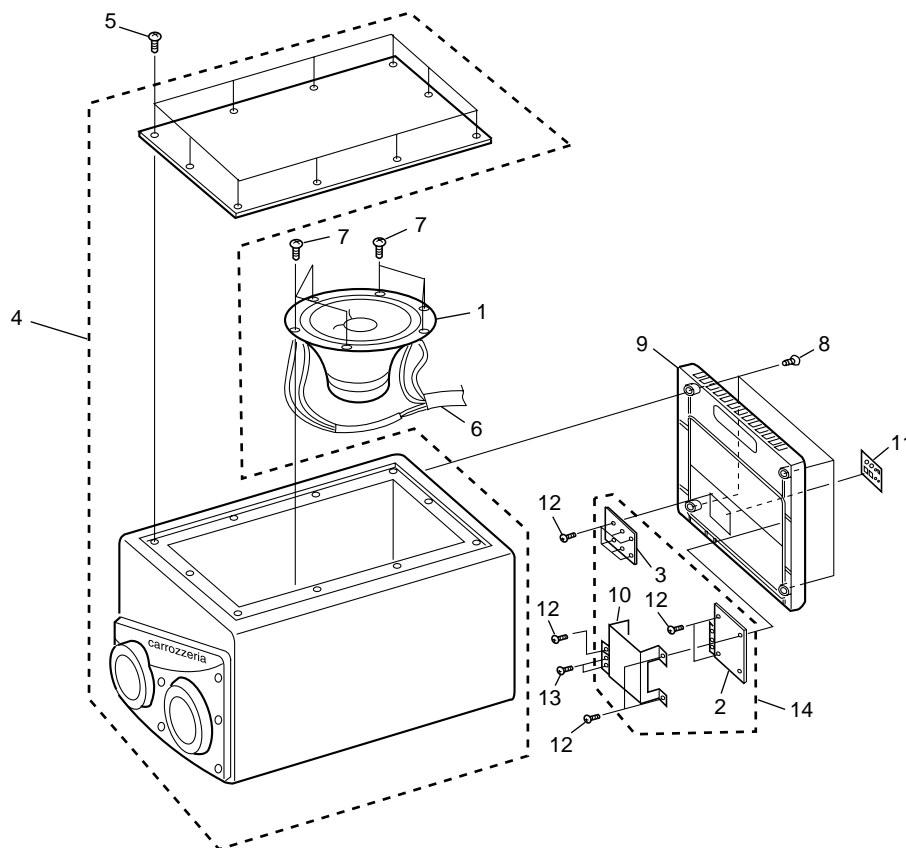


3. EXPLODED VIEWS AND PARTS LIST

NOTES: ● Parts marked by "NSP" are generally unavailable because they are not in our Master Spare Parts List.

- The Δ mark found on some component parts indicates the importance of the safety factor of the part. Therefore, when replacing, be sure to use parts of identical designation.
- Screws adjacent to ∇ mark on the product are used for disassembly.

3.1 MAIN UNIT



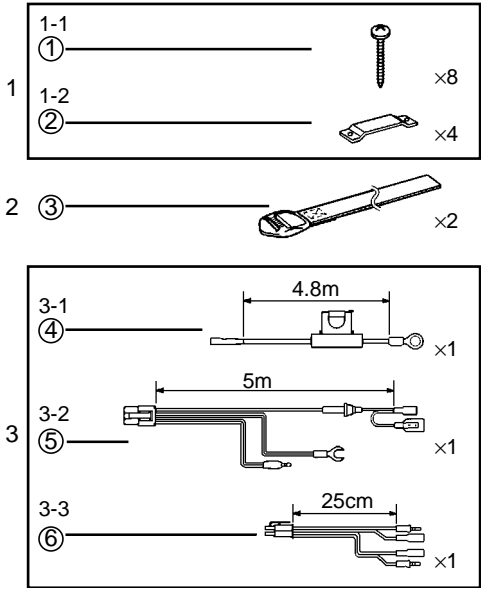
● MAIN UNIT PARTS LIST

Mark	No.	Description	Part No.	Remark	Mark	No.	Description	Part No.	Remark
NSP	1	Woofer	20-211AZ	×1		8	Screw	BNC40P300FNI	×4
	2	AMP UNIT	TWK1010	×1		9	Heat Sink	TNA1515	×1
NSP	3	SWITCH UNIT	TWS1028	×1		10	Shield Plate	TNA1517	×1
	4	Cabinet Assy	TXC1145	×1		11	Terminal Panel	TNS1018	×1
	5	Screw	TBA1121	×10		12	Screw	BBZ30P080FMC	×11
	6	Cord	TDC2260	×1		13	Screw	PBB30P140FMC	×2
	7	Screw	BNC40P200FMC	×6		14	PCB Unit	TWX1025-AZ	×1

3.2 PACKING PARTS LIST

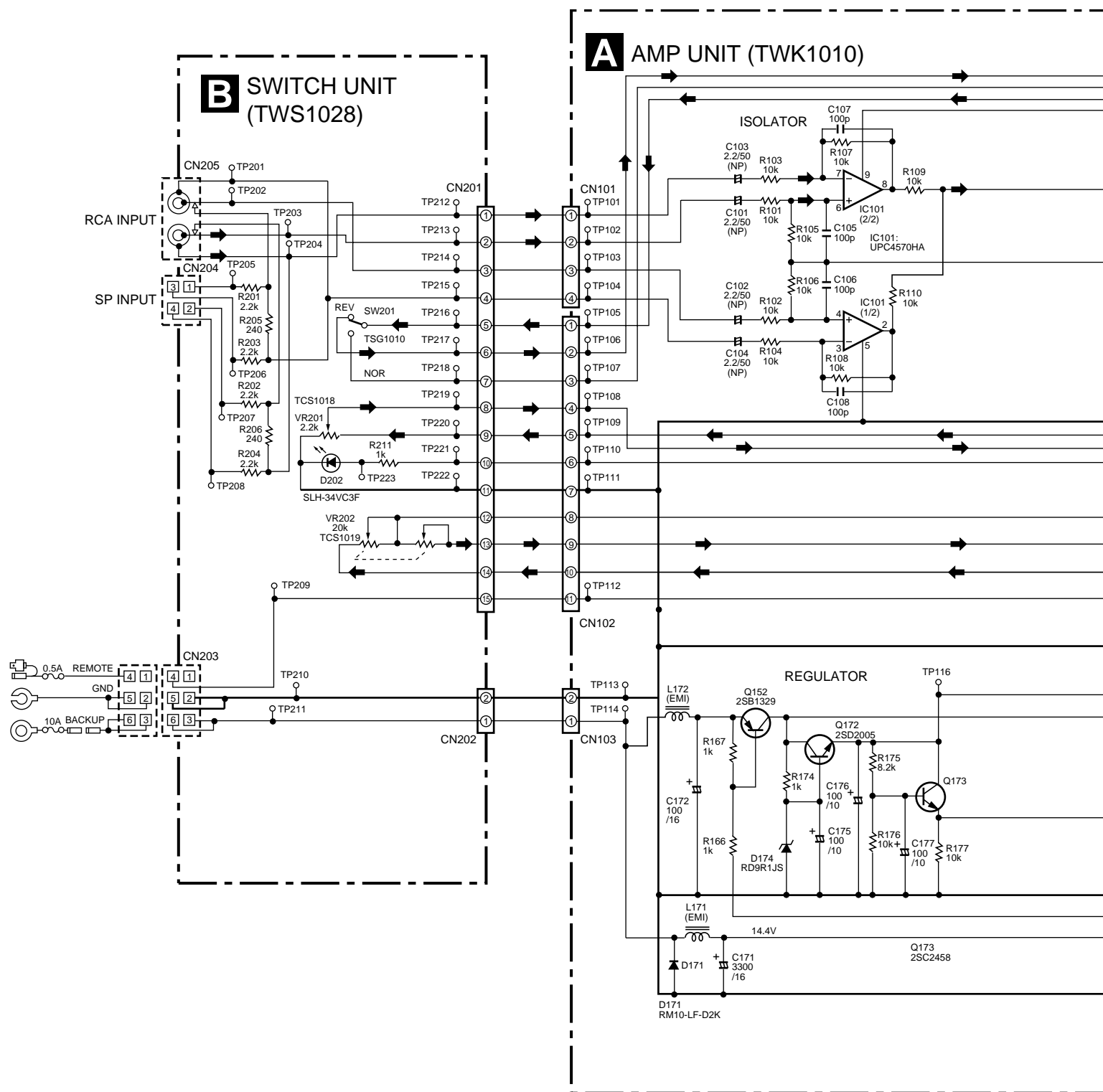
Mark	No.	Description	Part No.	Remark
NSP	1	Parts Bag	TEA1272	×1
	└ 1-1	Screw	BNC40P250FZK	×8
	└ 1-2	Fitting Metal	TNA1220	×4
	2	Belt Assy	TXH1420	×2
	3	Cord Poly. Assy	TXH1558	×1
	└ 3-1	Cord	TDC2259	×1
	└ 3-2	Cord	TDC2244	×1
	└ 3-3	Cord	TDC2245	×1
		Operating Instructions	TRD1139	×1
		Styrofoam Protector	TEC1906	One pair
		Mount	THC1614	×1
		Packing Case	THF3280	×1

● PARTS INCLUDED

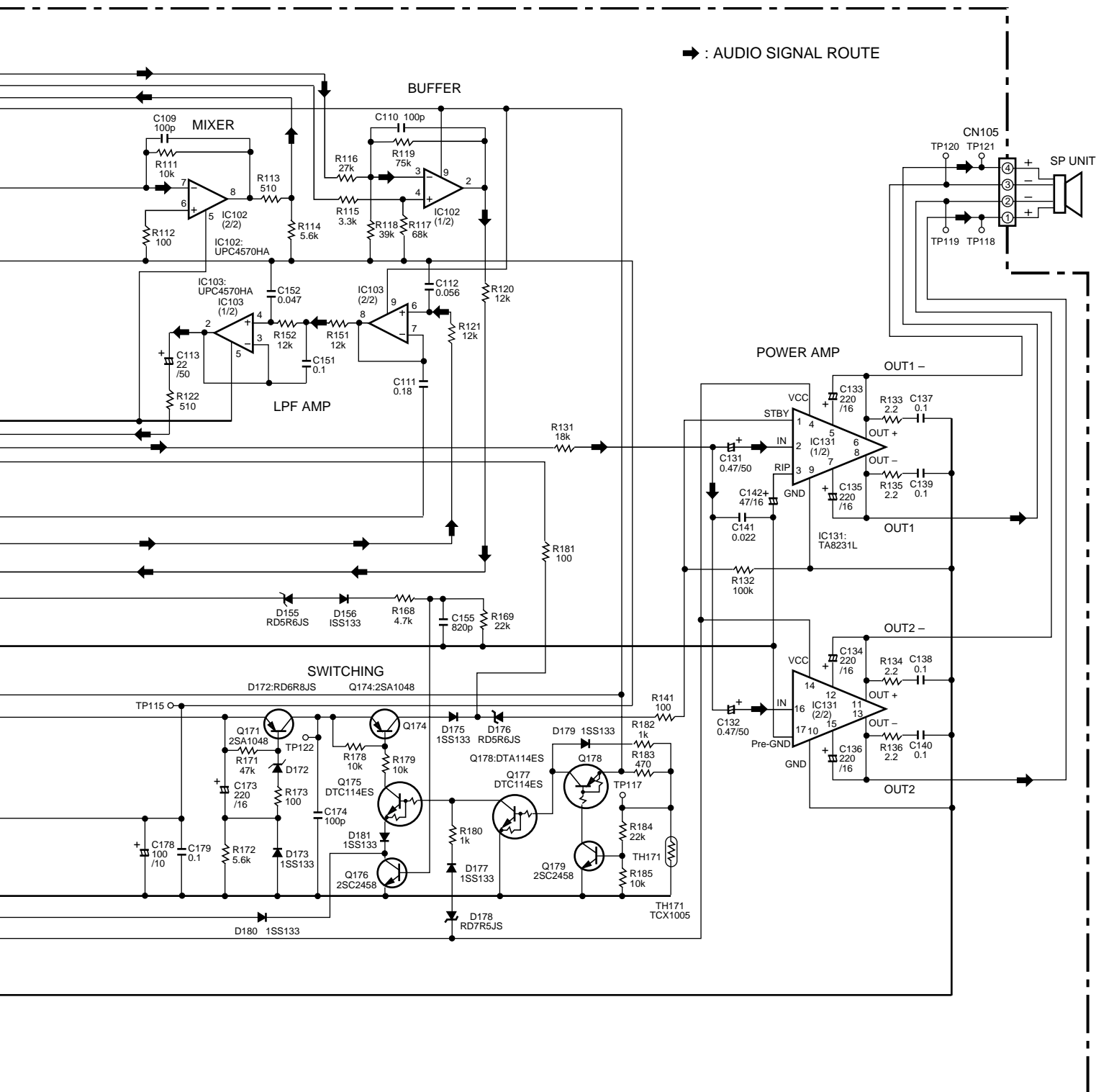


4. PCB UNIT(TWX1025-AZ)

4.1 SCHEMATIC DIAGRAM

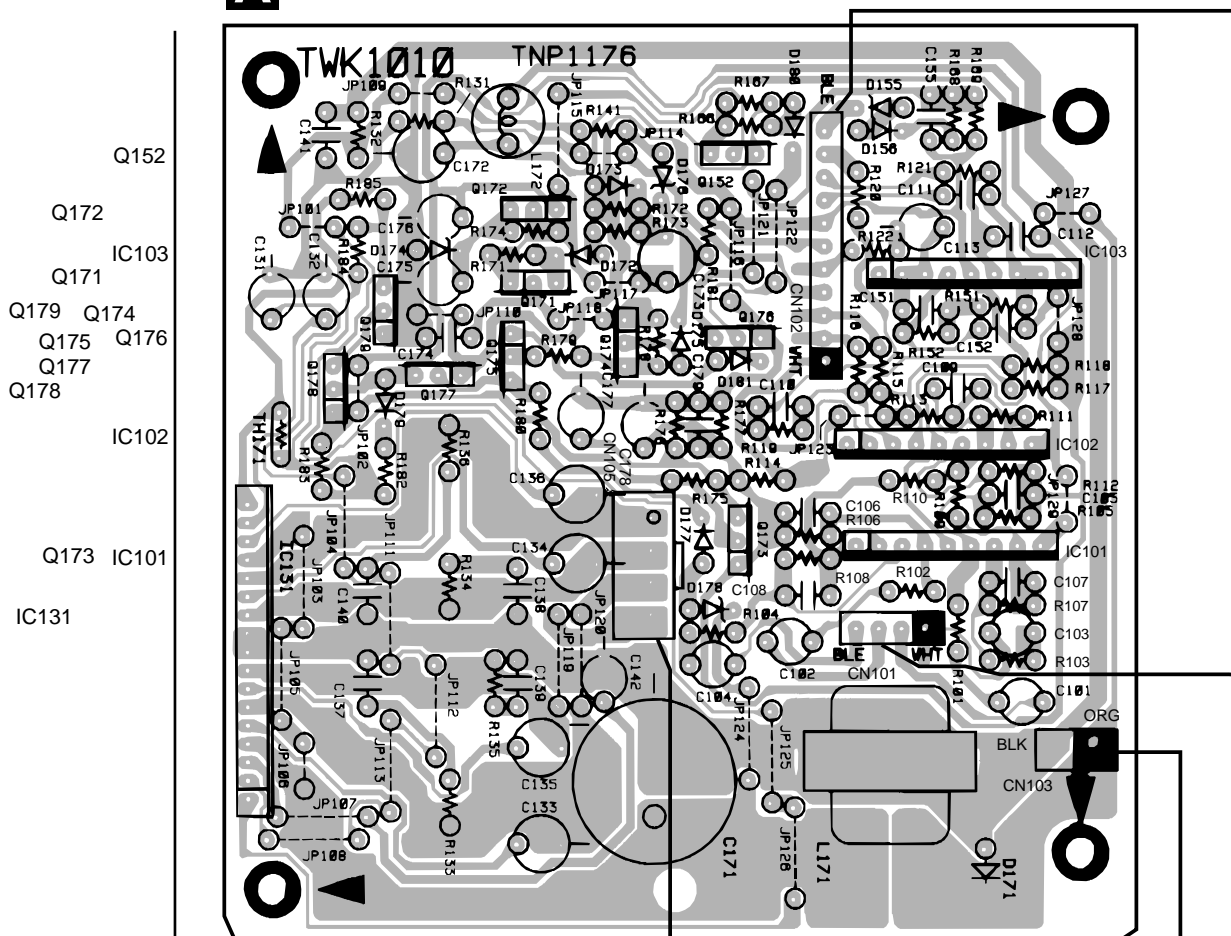


Note : When ordering service parts, be sure to refer to "EXPLODED VIEWS and PARTS LIST" or "PCB PARTS LIST".

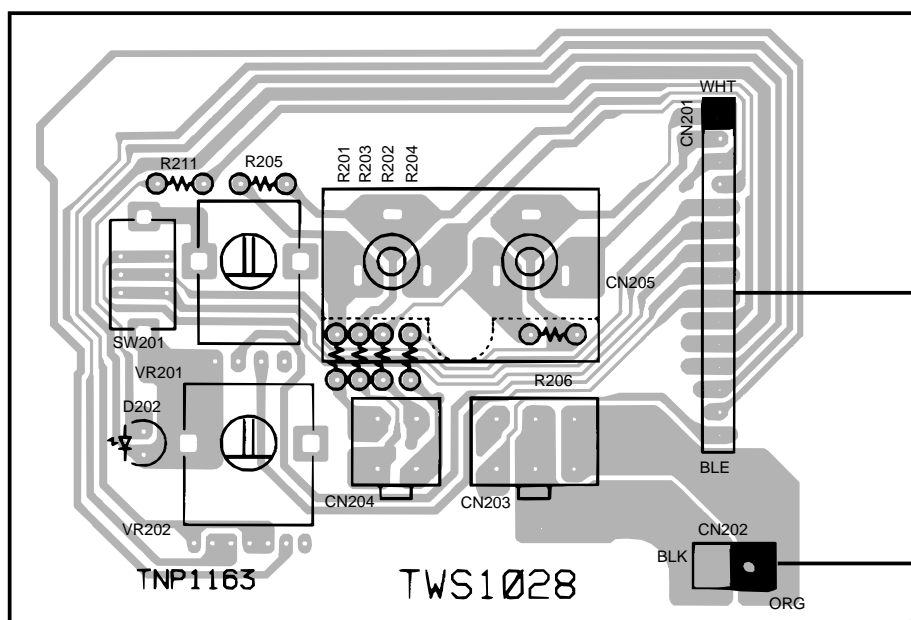


4.2 PCB CONNECTION DIAGRAM

A AMP UNIT

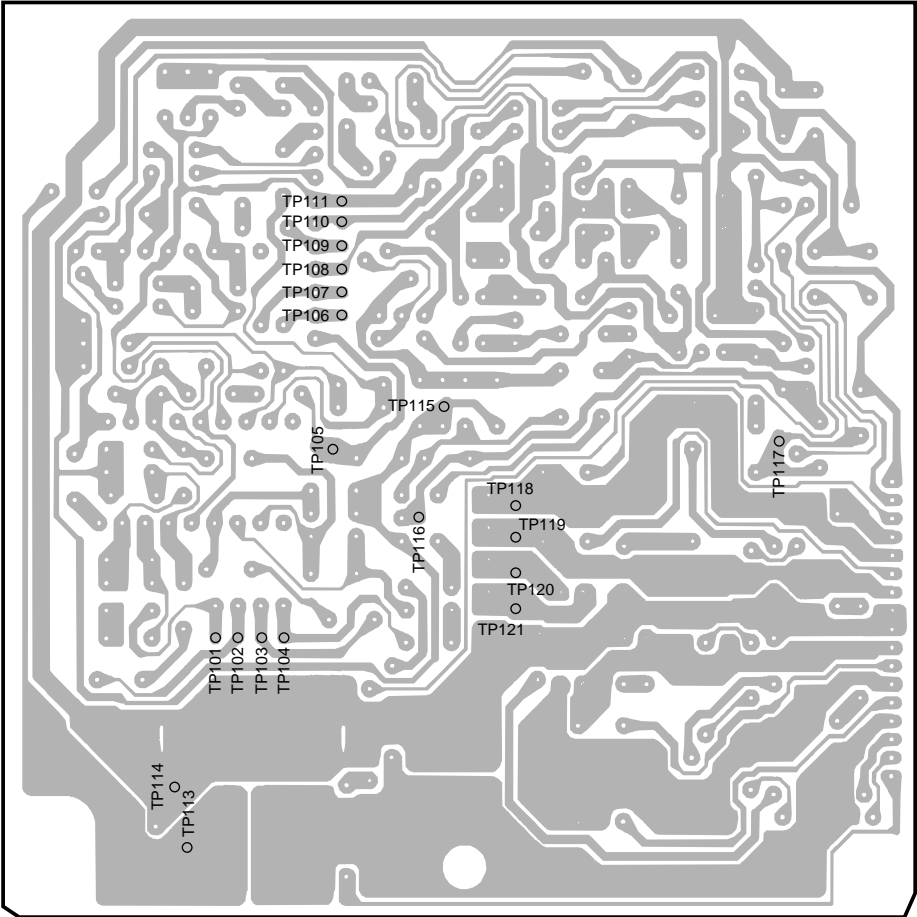


B SWITCH UNIT

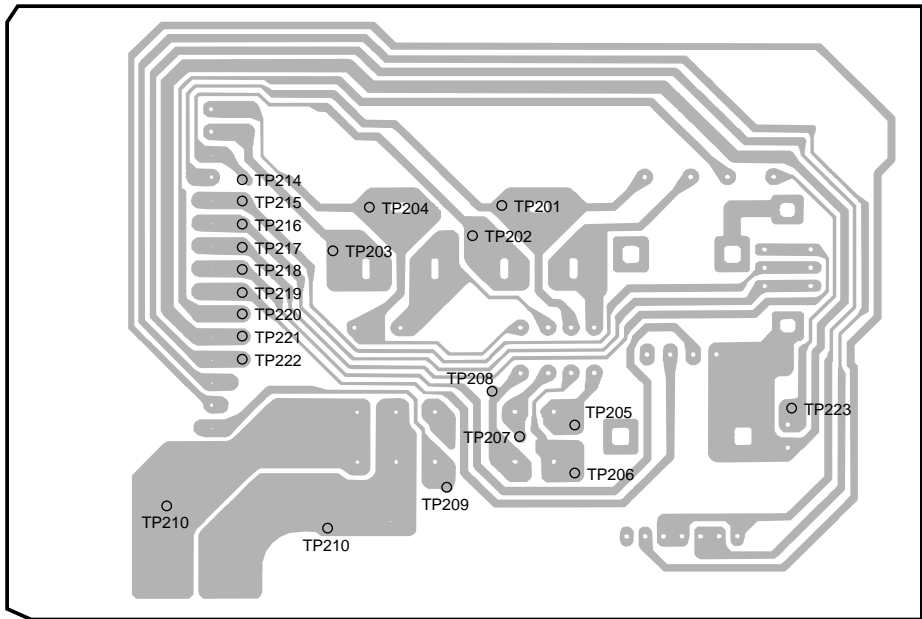


• This diagram is viewed from the mounted parts side.

A AMP UNIT



B SWITCH UNIT



• This diagram is viewed from the foil side.

5. PCB PARTS LIST

NOTES: ●Parts marked by "NSP" are generally unavailable because they are not in our Master Spare Parts List.
●The Δ mark found on some component parts indicates the importance of the safety factor of the part.
Therefore, when replacing, be sure to use parts of identical designation.
●When ordering resistors, first convert resistance values into code form as shown in the following examples.
Ex.1 When there are 2 effective digits (any digit apart from 0), such as 560 ohm and 47k ohm (tolerance is shown by J=5%, and K=10%).
560 Ω → 56 × 10ⁱ → 561 RD1/4PU 5 6 1 J
47k Ω → 47 × 10³ → 473 RD1/4PU 4 7 3 J
0.5 Ω → R50 RN2H R 5 0 K
1 Ω → 1R0 RS1P 1 R 0 K
Ex.2 When there are 3 effective digits (such as in high precision metal film resistors).
5.62k Ω → 562 × 10ⁱ → 5621 RN1/4PC 5 6 2 1 F

Mark	No.	Description	Part No.
------	-----	-------------	----------

LIST OF ASSEMBLIES

PCB UNIT	TWX1025-AZ
└ AMP UNIT	TWK1010
└ SWITCH UNIT	TWS1028

A AMP UNIT

SEMICONDUCTORS

IC101-IC103	UPC4570HA
IC131	TA8231L
Q171,Q174	2SA1048
Q152	2SB1239
Q172	2SD2005
Q173,Q176,Q179	2SC2458
Q178	DTA114ES
Q175,Q177	DTC114ES
D156,D173,D175	1SS133
D177,D179-D181	1SS133
D155,D176	RD5R6JS
D172	RD6R8JS
D178	RD7R5JS
D174	RD9R1JS
D171	RM10-LF-D2K

COILS

L171	TTH1075
L172	TTH1079

CAPACITORS

C171 (3300μ/16V)	TCH1218
C133-C136,C173 (220μ/16V)	TCH1219
C175-C178	CEAS101M10
C172	CEAS101M16
C113	CEAS220M50
C142	CEAS470M16
C131,C132	CEASR47M50
C101-C104	CEJANP2R2M50
C137-C140,C151,C179	CFTNA104J50
C111	CFTNA184J50
C152	CFTNA473J50
C112	CFTNA563J50
C141	CFTNA223J50
C105-C110,C174	CKCYB101K50
C155	CKCYB821K50

Mark	No.	Description	Part No.
------	-----	-------------	----------

RESISTORS

All Resistors	RD1/4PU□□□J
---------------	-------------

OTHERS

TH171	THERMISTER	TCX1005
CN101	CORD	TDC2253
CN103	CORD	TDC2254
CN105	CONNECTOR	TKS1079

B SWITCH UNIT

SEMICONDUCTOR

D202	SLH-34VC3F
------	------------

SWITCH

SW201	TSG1010
-------	---------

RESISTORS

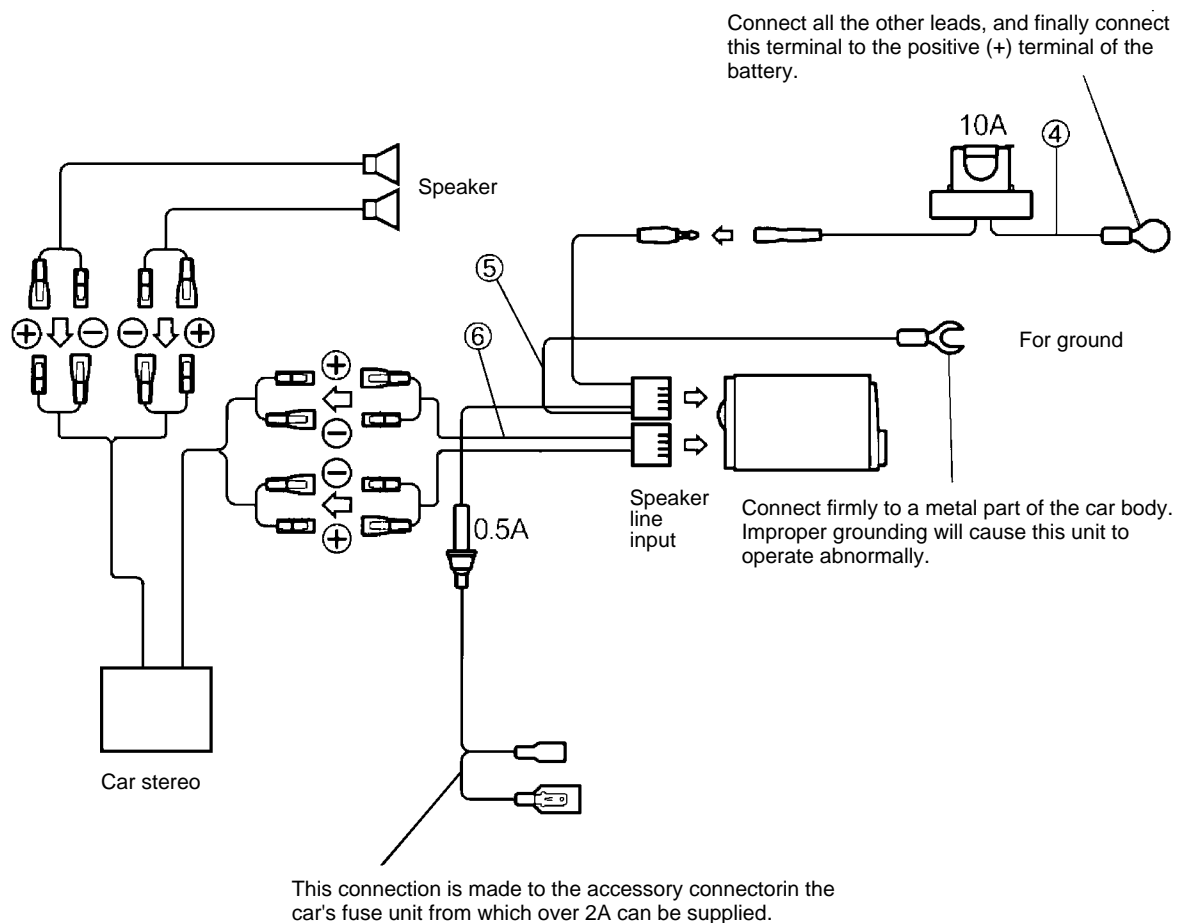
VR201 (2.2kΩ)	TCS1018
VR202 (20kΩ)	TCS1019
Other Resistors	RD1/4PU□□□J

OTHERS

CN203	CONNECTOR	TKS1062
CN204	CONNECTOR	TKS1063
CN205	RCA JACK	TKS1061
LED	SPACER	MNK1123
SCREW		BPZ26P060FZK

5. CONNECTIONS

Wiring Example 1 (Speaker line Input system)



Wiring Example 2 (RCA Input system)

