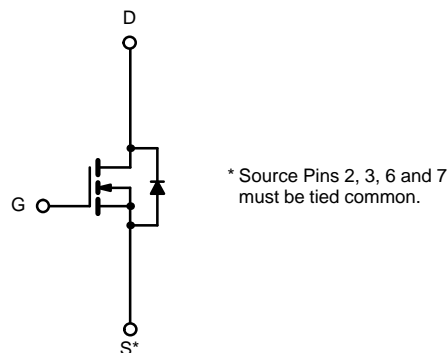
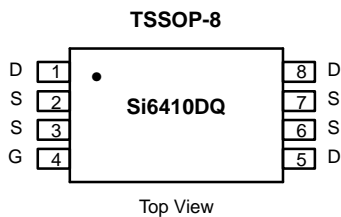




N-Channel 30-V (D-S) MOSFET

PRODUCT SUMMARY		
V_{DS} (V)	$r_{DS(on)}$ (Ω)	I_D (A)
30	0.014 @ $V_{GS} = 10$ V	± 7.8
	0.021 @ $V_{GS} = 4.5$ V	± 6.3

TrenchFET[®]
Power MOSFETs



N-Channel MOSFET

ABSOLUTE MAXIMUM RATINGS ($T_A = 25^\circ\text{C}$ UNLESS OTHERWISE NOTED)			
Parameter	Symbol	Limit	Unit
Drain-Source Voltage	V_{DS}	30	V
Gate-Source Voltage	V_{GS}	± 20	
Continuous Drain Current ($T_J = 150^\circ\text{C}$) ^a	$T_A = 25^\circ\text{C}$	± 7.8	A
	$T_A = 70^\circ\text{C}$	± 6.2	
Pulsed Drain Current	I_{DM}	± 30	
Continuous Source Current (Diode Conduction) ^a	I_S	1.5	
Maximum Power Dissipation ^a	$T_A = 25^\circ\text{C}$	1.5	W
	$T_A = 70^\circ\text{C}$	1.0	
Operating Junction and Storage Temperature Range	T_J, T_{stg}	-55 to 150	$^\circ\text{C}$

THERMAL RESISTANCE RATINGS			
Parameter	Symbol	Limit	Unit
Maximum Junction-to-Ambient ^a	R_{thJA}	83	$^\circ\text{C/W}$

Notes

a. Surface Mounted on FR4 Board, $t \leq 10$ sec.

For SPICE model information via the Worldwide Web: <http://www.vishay.com/www/product/spice.htm>



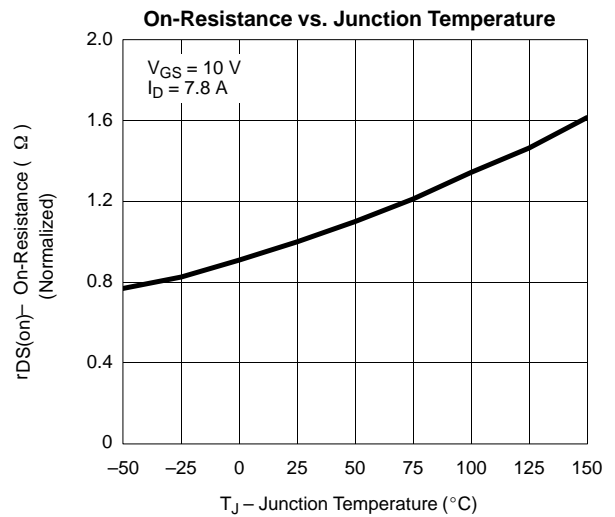
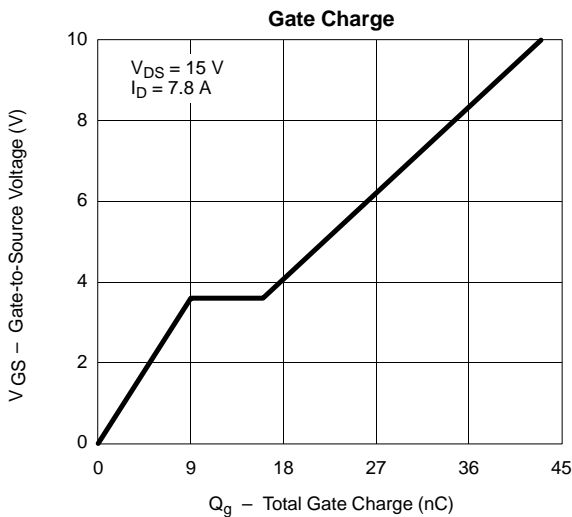
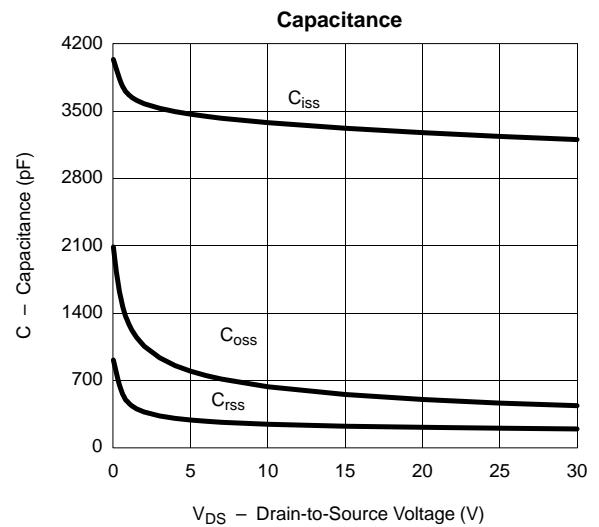
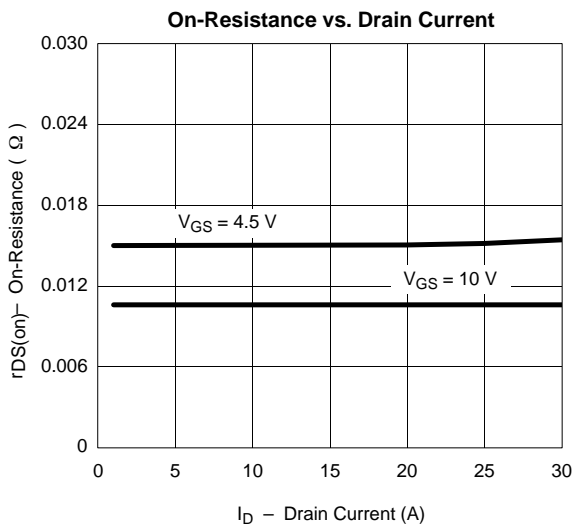
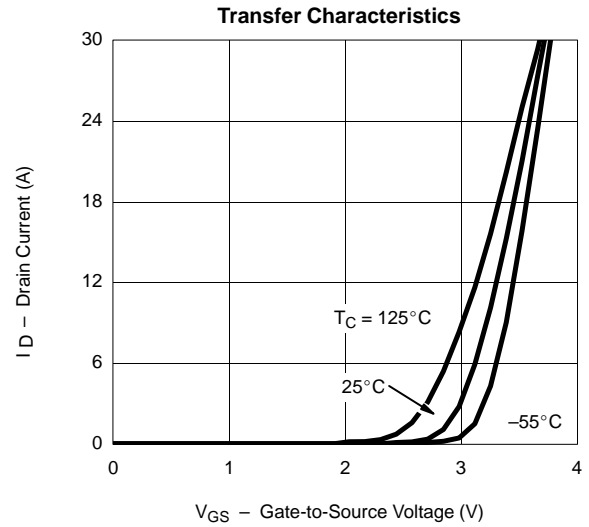
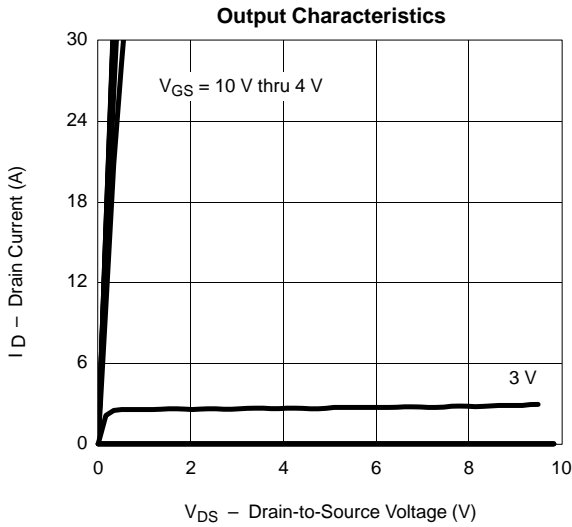
SPECIFICATIONS (T_J = 25 °C UNLESS OTHERWISE NOTED)						
Parameter	Symbol	Test Condition	Min	Typ	Max	Unit
Static						
Gate Threshold Voltage	V _{GS(th)}	V _{DS} = V _{GS} , I _D = 250 μA	1			V
Gate-Body Leakage	I _{GSS}	V _{DS} = 0 V, V _{GS} = ±20 V			±100	nA
Zero Gate Voltage Drain Current	I _{DSS}	V _{DS} = 30 V, V _{GS} = 0 V			1	μA
		V _{DS} = 30 V, V _{GS} = 0 V, T _J = 55 °C			25	
On-State Drain Current ^a	I _{D(on)}	V _{DS} = 5 V, V _{GS} = 10 V	20			A
Drain-Source On-State Resistance ^a	r _{DS(on)}	V _{GS} = 10 V, I _D = 7.8 A		0.011	0.014	Ω
		V _{GS} = 4.5 V, I _D = 5 A		0.015	0.021	
Forward Transconductance ^a	g _{fs}	V _{DS} = 15 V, I _D = 7.8 A		27		S
Diode Forward Voltage ^a	V _{SD}	I _S = 1.5 A, V _{GS} = 0 V		0.7	1.1	V
Dynamic^b						
Gate Charge	Q _g	V _{DS} = 15 V, V _{GS} = 5 V, I _D = 7.8 A		22	33	nC
Total Gate Charge	Q _{gt}	V _{DS} = 15 V, V _{GS} = 10 V, I _D = 7.8 A		43	60	
Gate-Source Charge	Q _{gs}			9.0		
Gate-Drain Charge	Q _{gd}			7.0		
Turn-On Delay Time	t _{d(on)}	V _{DD} = 15 V, R _L = 15 Ω I _D ≅ 1 A, V _{GEN} = 10 V, R _G = 6 Ω		15	30	ns
Rise Time	t _r			10	20	
Turn-Off Delay Time	t _{d(off)}			70	120	
Fall Time	t _f			20	50	
Source-Drain Reverse Recovery Time	t _{rr}	I _F = 1.5 A, di/dt = 100 A/μs		50	80	

Notes

- a. Pulse test; pulse width ≤ 300 μs, duty cycle ≤ 2%.
- b. Guaranteed by design, not subject to production testing.



TYPICAL CHARACTERISTICS (25°C UNLESS NOTED)



TYPICAL CHARACTERISTICS (25°C UNLESS NOTED)

