

NC7SZ126

Tiny UHS Buffer with TRI-STATE® Output

General Description

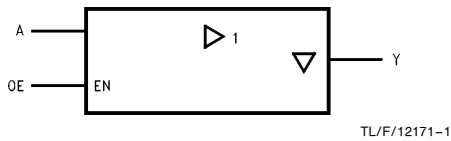
The NC7SZ126 is a single buffer with TRI-STATE output from National's Ultra High Speed Series of Tinylogic in the space saving TinyPak™ package. The device is fabricated with advanced CMOS technology to achieve ultra high speed with high output drive while maintaining low static power dissipation over a very broad V_{CC} operating range. The device is specified to operate over the 1.8V to 5.5V range. The inputs and output are high impedance above ground when V_{CC} is 0V. Inputs tolerate voltages up to 6V independent of V_{CC} operating voltage.

Features

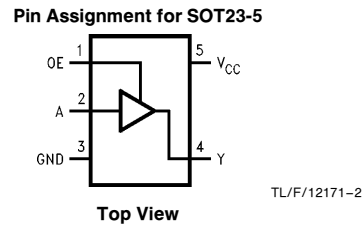
- Space saving 5-lead surface mount SOT23 package
- Ultra High Speed; T_{PD} 2.6 ns Typ into 50 pF at 5V V_{CC}
- High Output Drive; ± 24 mA at 3V V_{CC}
- Broad V_{CC} Operating Range; 1.8V to 5.5V
- Matches the performance of LCX when operated at 3.3V V_{CC}
- Power down high impedance inputs/output
- Overvoltage tolerant inputs facilitate 5V to 3V translation
- Quiet Series™ noise/EMI reduction circuitry implemented

Product Code	Package	Package Drawing	Package Top Mark	Supplied As
NC7SZ126M5	5-Pin SOT 23-5	MA05B	7Z26	250 Units on Tape and Reel
NC7SZ126M5X	5-Pin SOT 23-5	MA05B	7Z26	3k Units on Tape and Reel

Logic Symbol



Connection Diagram



Function Table

Inputs		Output
OE	IN A	OUT Y
H	L	L
H	H	H
L	X	Z

H = HIGH Logic Level
 L = LOW Logic Level
 X = HIGH or LOW Logic Level
 Z = HIGH Impedance State

Pin Descriptions

Pin Names	Description
A, OE	Inputs
Y	Output

TRI-STATE® is a registered trademark of National Semiconductor Corp.
 Quiet Series™ and TinyPak™ are trademarks of National Semiconductor Corp.

Absolute Maximum Ratings (Note 1)

Supply Voltage (V_{CC})	-0.5V to +6V
DC Input Voltage (V_{IN})	-0.5V to +6V
DC Output Voltage (V_{OUT})	-0.5V to +6V
DC Input Diode Current (I_{IK})	
@ $V_{IN} < -0.5V$	-50 mA
@ $V_{IN} > 6V$	+20 mA
DC Output Diode Current (I_{OK})	
@ $V_{OUT} < -0.5V$	-50 mA
@ $V_{OUT} > 6V, V_{CC} = GND$	+20 mA
DC Output Current (I_{OL}/I_{OH})	± 50 mA
DC V_{CC}/GND Current (I_{CC}/I_{GND})	± 50 mA
Storage Temperature (T_{STG})	-65°C to +150°C
Junction Temperature under Bias (T_J)	150°C
Junction Lead Temp. (T_L); (Soldering, 10 sec)	260°C
Package Power Dissipation @ +70°C	200 mW
ESD Tolerance (Human Body Model) MIL-STD-883D Method 17	1000V
DC Latchup Tolerance (Jedec Method 3015.7)	
Negative Source Current (NIT)	-500 mA
Positive Source Voltage (PVT)	+8V

Recommended Operating Conditions

Supply Voltage Operating (V_{CC})	1.8V to 5.5V
Supply Voltage Data Retention (V_{CC})	1.5V to 5.5V
Input Voltage (V_{IN})	0V to 5.5V
Output Voltage (V_{OUT})	0V to V_{CC}
Operating Temperature (T_{OPR})	-40°C to +85°C
Input Rise and Fall Time (t_r, t_f)	
$V_{CC} = 1.8V, 2.5V \pm 0.2V$	0 ns/V to 20 ns/V
$V_{CC} = 3.3V \pm 0.3V$	0 ns/V to 10 ns/V
$V_{CC} = 5.0V \pm 0.5V$	0 ns/V to 5 ns/V
Thermal Resistance (θ_{JA} in Free Air)	300°C/W

Note 1: Absolute maximum ratings are DC values beyond which the device may be damaged or have its useful life impaired. The datasheet specifications should be met, without exception, to ensure that the system design is reliable over its power supply, temperature, and output/input loading variables. National does not recommend operation outside datasheet specifications.

Electrical Characteristics

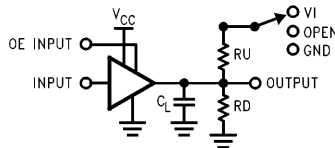
Symbol	Parameter	V_{CC} (V)	NC7SZ126			NC7SZ126		Unit	Conditions	
			$T_A = +25^\circ\text{C}$			$T_A = -40^\circ\text{C}$ to $+85^\circ\text{C}$				
			Min	Typ	Max	Min	Max			
V_{IH}	High Level Input Voltage	1.8 2.3 to 5.5	0.75 V_{CC} 0.7 V_{CC}			0.75 V_{CC} 0.7 V_{CC}		V		
V_{IL}	Low Level Input Voltage	1.8 2.3 to 5.5	0.25 V_{CC} 0.3 V_{CC}			0.25 V_{CC} 0.3 V_{CC}		V		
V_{OH}	High Level Output Voltage	1.8 2.3 3.0 4.5	1.7 2.2 2.9 4.4	1.8 2.3 3.0 4.5	1.7 2.2 2.9 4.4			V	$V_{IN} = V_{IH}$ or V_{IL}	$I_{OH} = -100 \mu\text{A}$
		2.3 3.0 3.0 4.5	1.9 2.4 2.3 3.8	2.15 2.80 2.68 4.20	1.9 2.4 2.3 3.8			V		$I_{OH} = -8 \text{ mA}$ $I_{OH} = -16 \text{ mA}$ $I_{OH} = -24 \text{ mA}$ $I_{OH} = -32 \text{ mA}$
V_{OL}	Low Level Output Voltage	1.8 2.3 3.0 4.5	0.0 0.0 0.0 0.0			0.1 0.1 0.1 0.1		V	$V_{IN} = V_{IH}$ or V_{IL}	$I_{OL} = 100 \mu\text{A}$
		2.3 3.0 3.0 4.5	0.10 0.15 0.22 0.22	0.3 0.4 0.55 0.55	0.3 0.4 0.55 0.55				V	
I_{IN}	Input Leakage Current	5.5	± 1			± 10		μA	$V_{IN} = 5.5V, GND$	
I_{OZ}	TRI-STATE Output Leakage	5.5	± 1			± 10		μA	$V_{IN} = V_{IH}$ or V_{IL} $V_O = V_{CC}$ or GND	
I_{OFF}	Power Off Leakage Current	0.0	1			10		μA	V_{IN} or $V_{OUT} = 5.5V$	
I_{CC}	Quiescent Supply Current	5.5	2.0			20		μA	$V_{IN} = 5.5V, GND$	

AC Electrical Characteristics

Symbol	Parameter	V _{CC} (V)	NC7SZ126			NC7SZ126		Units	Conditions	Fig. No.
			T _A = +25°C			T _A = -40°C to +85°C				
			Min	Typ	Max	Min	Max			
t _{PLH} , t _{PHL}	Propagation Delay	1.8	2	5.3	11	2	11.5	ns	C _L = 15 pF, R _D = 1 MΩ S1 = OPEN	1,2
		2.5 ± 0.2	0.8	3.4	7.5	0.8	8.0			
		3.3 ± 0.3	0.5	2.5	5.2	0.5	5.5			
		5.0 ± 0.5	0.5	2.1	4.5	0.5	4.8			
t _{PLH} , t _{PHL}	Propagation Delay	3.3 ± 0.3	1.5	3.2	5.7	1.5	6.0	ns	C _L = 50 pF, R _D = 500Ω S1 = OPEN	1,2
		5.0 ± 0.5	0.8	2.6	5.0	0.8	5.3			
t _{PZL} , t _{PZH}	Output Enable Time	1.8	2.0	6.1	11.5	2	12	ns	C _L = 50 pF, R _D = 500Ω, R _U = 500Ω S1 = GND for t _{PZH} S1 = V _I for t _{PZL} V _I = 2 × V _{CC}	1,2
		2.5 ± 0.2	1.5	3.8	8.0	1.5	8.5			
		3.3 ± 0.3	1.5	3.2	5.7	1.5	6.0			
		5.0 ± 0.5	0.8	2.3	5.0	0.8	5.3			
t _{PLZ} , t _{PHZ}	Output Disable Time	1.8	2.0	5.6	11	2.0	12	ns	C _L = 50 pF, R _D = 500Ω, R _U = 500Ω S1 = GND for t _{PHZ} S1 = V _I for t _{PLZ} V _I = 2 × V _{CC}	1,2
		2.5 ± 0.2	1.0	4.0	8.0	1.0	8.5			
		3.3 ± 0.3	1.0	3.5	5.7	1.0	6.0			
		5.0 ± 0.5	0.5	2.5	4.7	0.5	5.0			
C _{IN}	Input Capacitance	0	4					pF		
C _{OUT}	Output Capacitance	0	8							
C _{PD}	Power Dissipation Capacitance	3.3	17					pF	(Note 1)	3
		5.0	24							

Note 1: C_{PD} is defined as the value of the internal equivalent capacitance which is derived from dynamic operating current consumption (I_{CCD}) at no output loading and operating at 50% duty cycle. (See Figure 3.)

C_{PD} is related to I_{CCD} dynamic operating current by the expression: I_{CCD} = (CPD) (V_{CC}) (f_{IN}) + (I_{CC} static).



TL/F/12171-3

Note 2: C_L includes load and stray capacitance

Note 3: Input PRR = 1.0 MHz, T_W = 500 ns

FIGURE 1. AC Test Circuit

AC Electrical Characteristics (Continued)

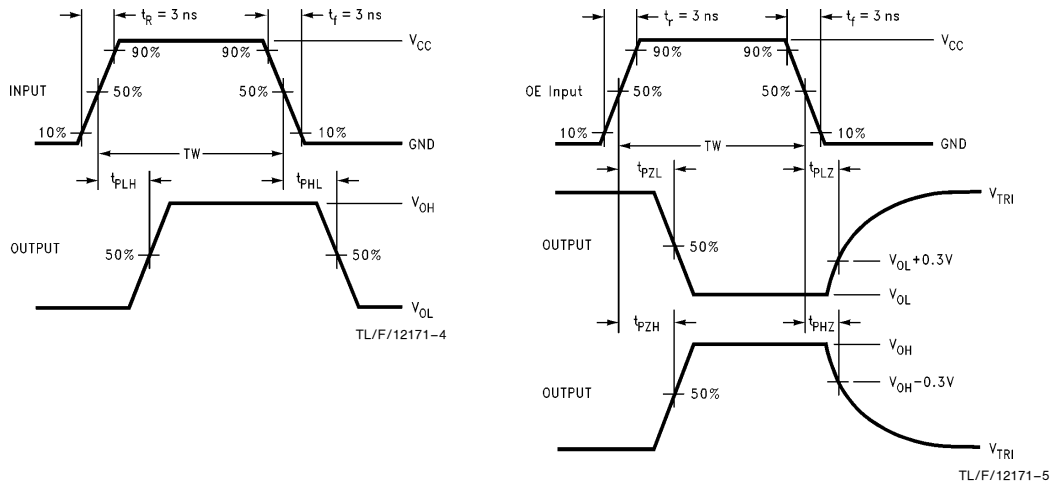
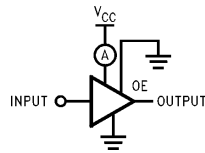


FIGURE 2. AC Waveforms



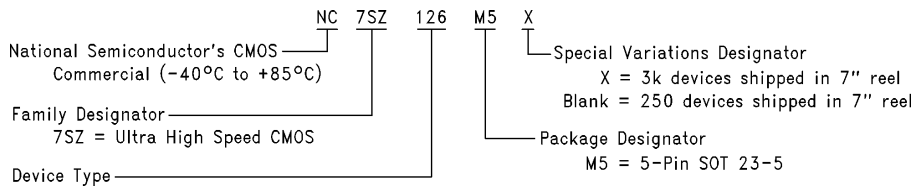
TL/F/12171-6

Note 4: Input = AC Waveform; $t_r = t_f = 1.8 \text{ ns}$;
 PRR = 10 MHz; Duty Cycle = 50%

FIGURE 3. I_{CCD} Test Circuit

Ordering Information

The device number is used to form part of a simplified purchasing code where the package type and temperature range are defined as follows:



TL/F/12171-7

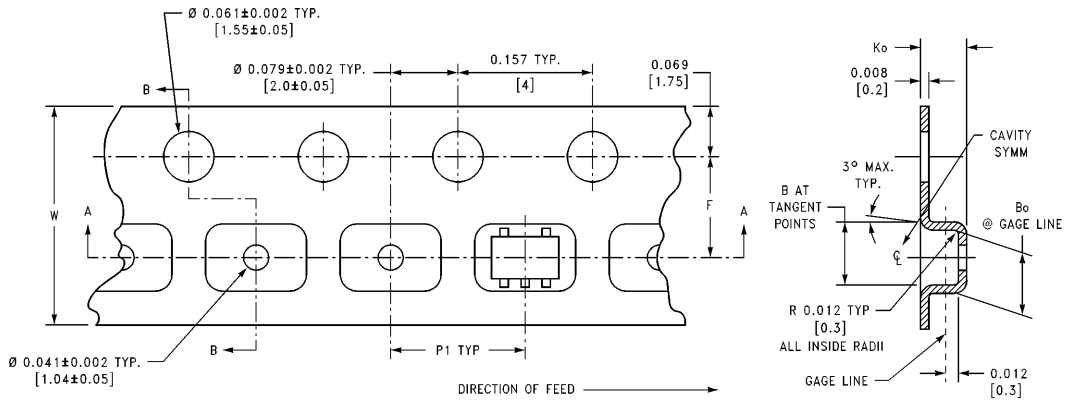
SOT23-5 Tape and Reel Specification inches (millimeters)

Tape Format

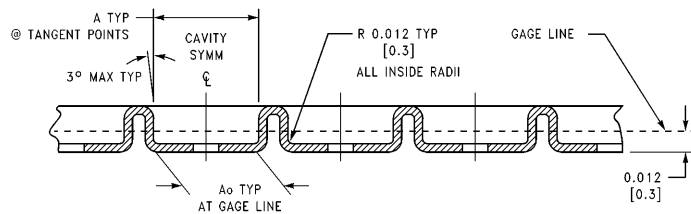
Tape Section	# Cavities	Cavity Status	Cover Tape Status
Leader (Start End)	0 (min)	Empty	Unsealed
	75 (min)	Empty	Sealed
Carrier	3000	Filled	Sealed
	250	Filled	Sealed
Trailer (Hub End)	125 (min)	Empty	Sealed
	0 (min)	Empty	Unsealed

SOT23-5 Tape and Reel Specification inches (millimeters) (Continued)

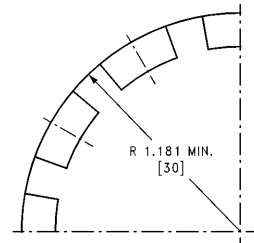
TAPE DIMENSIONS inches (millimeters)



SECTION B-B



SECTION A-A

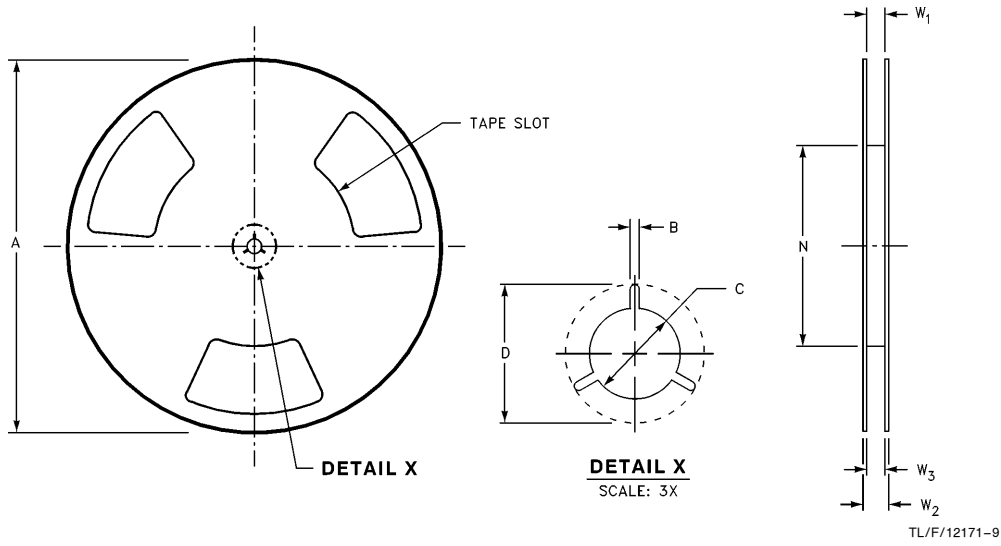


BEND RADIUS NOT TO SCALE
TL/F/12171-8

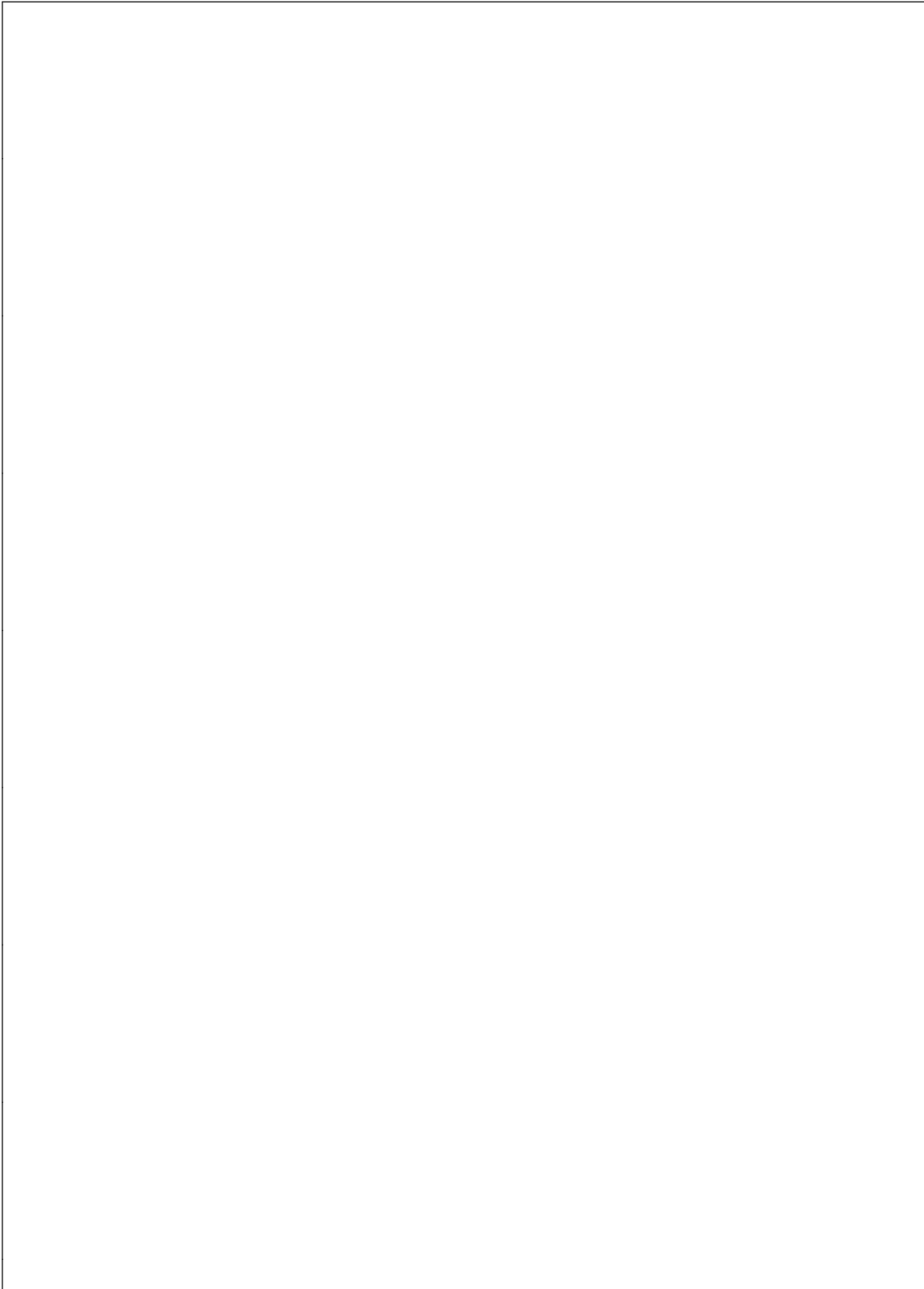
8mm	0.130 (3.3)	0.124 (3.15)	0.130 (3.3)	0.126 (3.2)	0.138 ± 0.002 (3.5 ± 0.05)	0.055 ± 0.004 (1.4 ± 0.11)	0.157 (4)	0.315 ± 0.012 (8 ± 0.3)
Tape Size	DIM A	DIM Ao	DIM B	DIM Bo	DIM F	DIM Ko	DIM P1	DIM W

SOT23-5 Tape and Reel Specification inches (millimeters) (Continued)

REEL DIMENSIONS

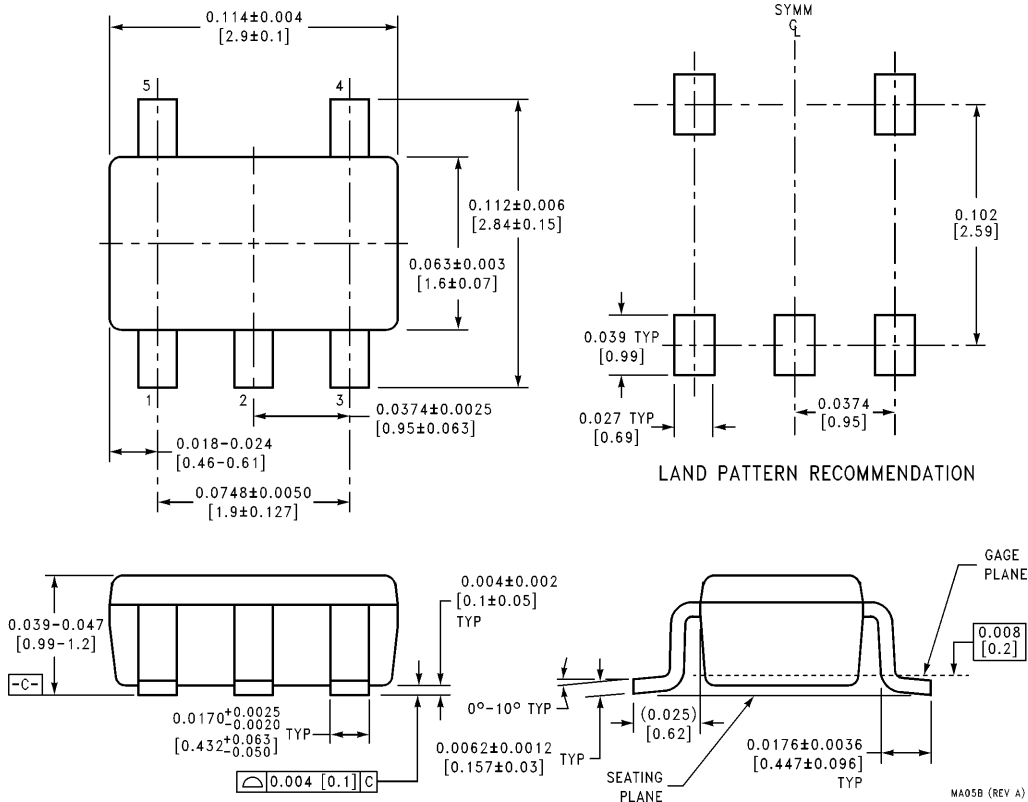


8mm	7.00 (177.8)	0.059 (1.50)	0.512 (13.00)	0.795 (20.20)	2.165 (55.00)	0.331 + 0.059/ - 0.000 (8.40 1.50/ - 0.00)	0.567 (14.40)	W1 + 0.078/ - 0.039 (W1 2.00/ - 1.00)
Tape Size	A	B	C	D	N	W1	W2	W3



NC7SZ126 Tiny UHS Buffer with TRI-STATE Output

Physical Dimensions inches (millimeters) unless otherwise noted



5-Lead Molded SOT-23-5, Enhanced Thermal
Order Number NC7SZ126M5 or NC7SZ126M5X
NS Package Number MA05B

LIFE SUPPORT POLICY

NATIONAL'S PRODUCTS ARE NOT AUTHORIZED FOR USE AS CRITICAL COMPONENTS IN LIFE SUPPORT DEVICES OR SYSTEMS WITHOUT THE EXPRESS WRITTEN APPROVAL OF THE PRESIDENT OF NATIONAL SEMICONDUCTOR CORPORATION. As used herein:

1. Life support devices or systems are devices or systems which, (a) are intended for surgical implant into the body, or (b) support or sustain life, and whose failure to perform, when properly used in accordance with instructions for use provided in the labeling, can be reasonably expected to result in a significant injury to the user.
2. A critical component is any component of a life support device or system whose failure to perform can be reasonably expected to cause the failure of the life support device or system, or to affect its safety or effectiveness.

<p>National Semiconductor Corporation Americas Tel: 1(800) 272-9959 Fax: 1(800) 737-7018 Email: support@nsc.com</p>	<p>National Semiconductor Europe Fax: +49 (0) 180-530 85 86 Email: europe.support@nsc.com</p>	<p>National Semiconductor Southeast Asia Fax: (852) 2376 3901 Email: sea.support@nsc.com</p>	<p>National Semiconductor Japan Ltd. Tel: 81-3-5620-7561 Fax: 81-3-5620-6179</p>
	<p>Deutsch Tel: +49 (0) 180-530 85 85 English Tel: +49 (0) 180-532 78 32 Français Tel: +49 (0) 180-532 93 58 Italiano Tel: +49 (0) 180-534 16 80</p>	<p>http://www.national.com</p>	

National does not assume any responsibility for use of any circuitry described, no circuit patent licenses are implied and National reserves the right at any time without notice to change said circuitry and specifications.